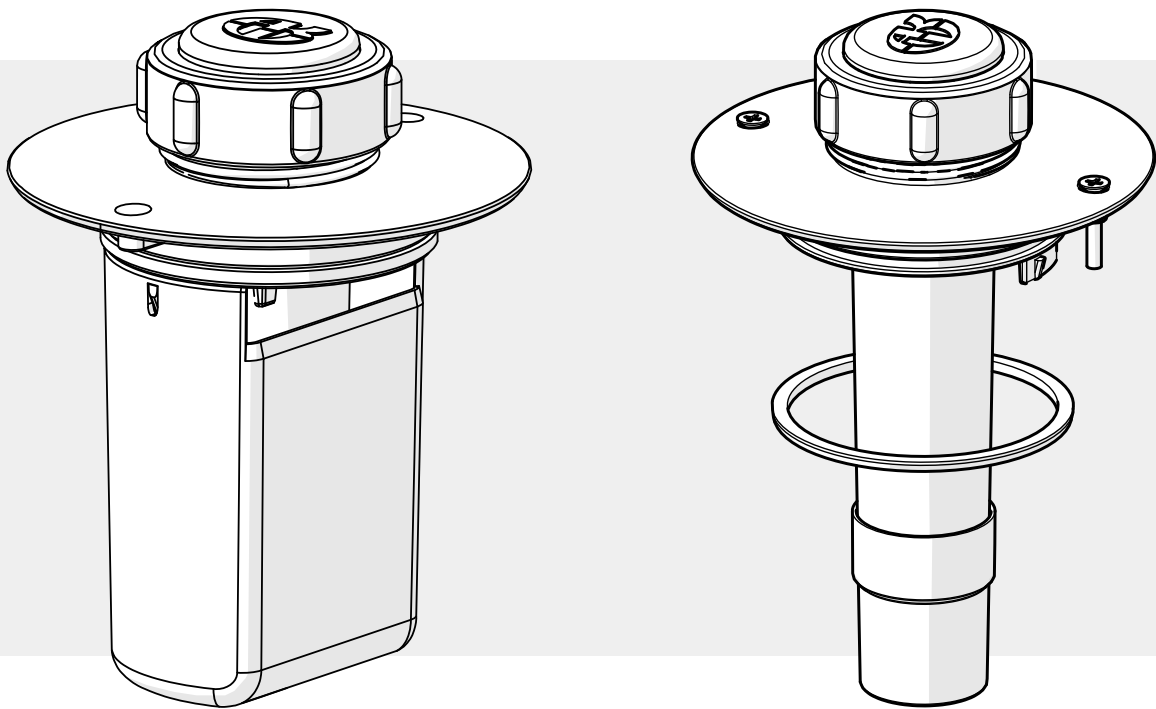


TF75 / TFWA Bath To Tray Adaptor

INSTALLATION AND USER MANUAL



Stock Code:

25410

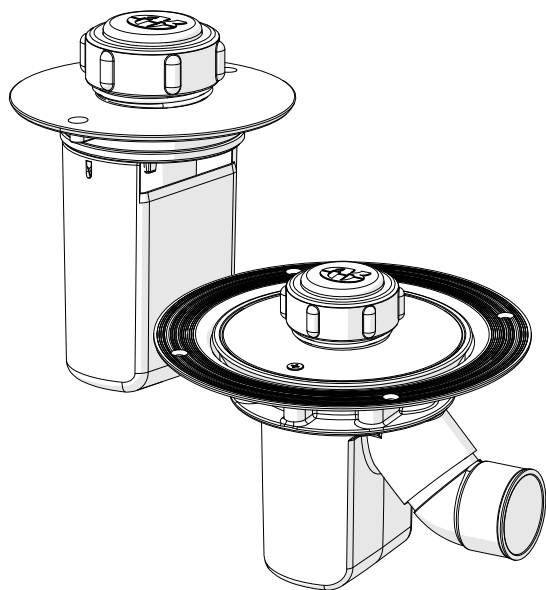
Installation Instructions

Introduction

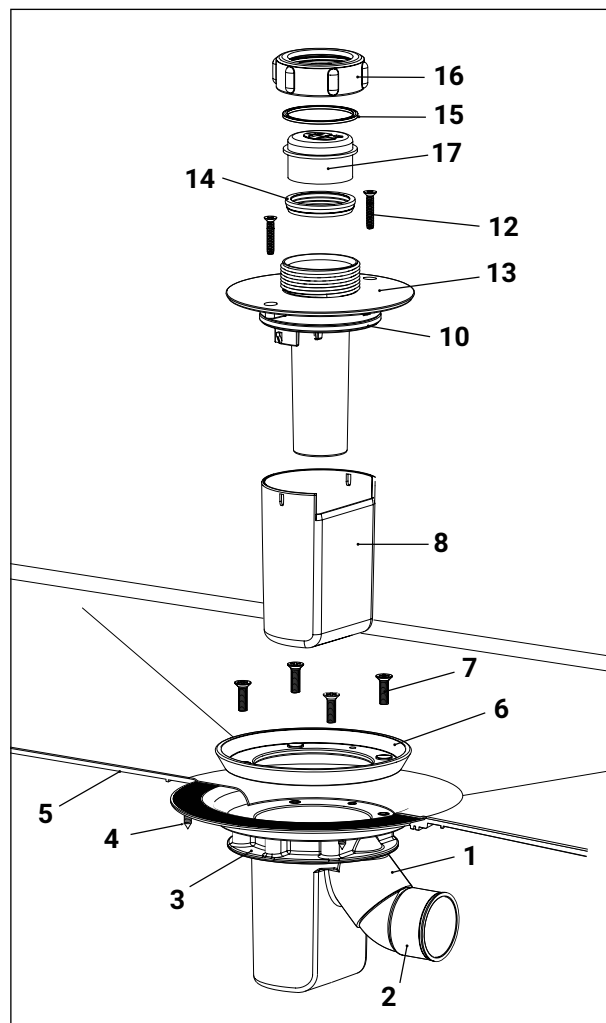
These instructions are to be read in conjunction with the installation instructions of the TF75 Gravity Waste or the combined 'Two Part Waste' consisting of a TFWA (Tuff Form Waste Adaptor) and GW50 or GW19 Gravity Waste.

Remove the grid cover and clamp ring (6) from the TF75 or TFWA. Keep the cover stored in a safe place as this will be required when upgrading from bath to wet floor bathing. Also remove the combined trap tube, seal and bucket assembly from the TF75. Then follow the instructions provided with the Tuff Form Wet Floor Former to correctly fit the chosen waste using Qty 4 countersunk head screws (4). Ensure the heads are flush and do not protrude or they may damage the wet floor covering. Ensure the former and waste are correctly supported from below. Install the wet floor covering ensuring all of the manufacturers instructions are followed. Trim the wet floor covering to fit the TF75 or TFWA opening and align and fit the clamp ring (6) with the 4 x M6 screws (7). Make sure the waste trap area is clean and free from all grit or other building waste material.

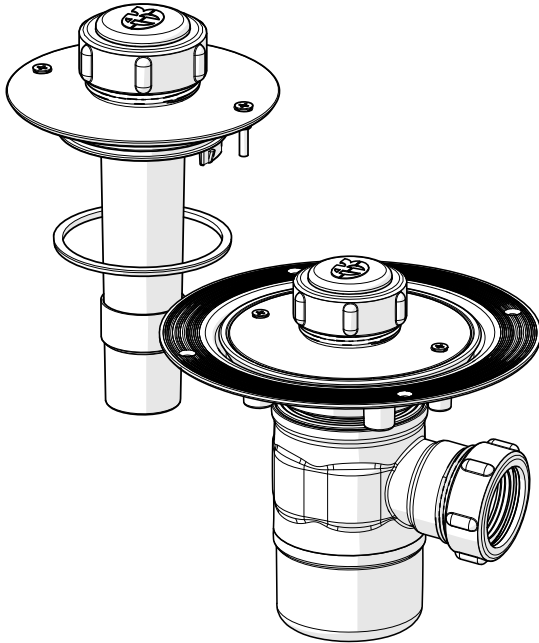
Installing into TF75 Gravity Waste



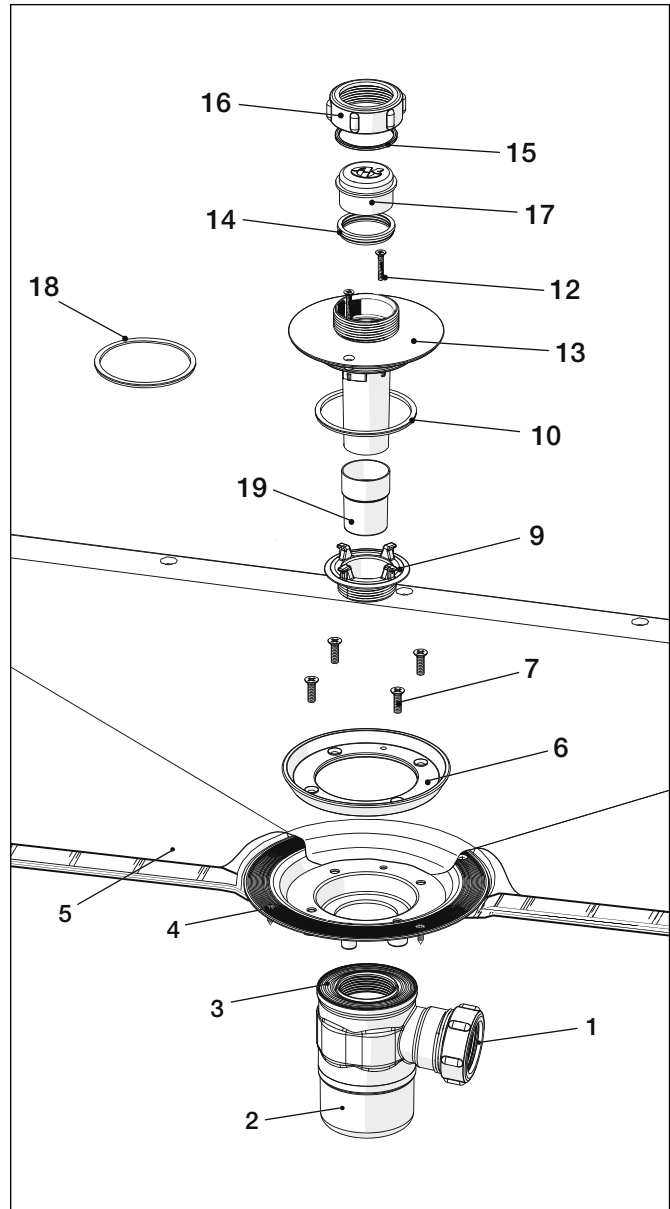
Remove the nut (16), backing ring (15), pressure testing plug (17) and waste pipe seal (14) from the Bath to Tray adaptor. Fit the remaining Bath to Tray Adaptor trap tube (13), seal (10) and the bucket (8) together and then lower it into the D shaped recess within the TF75 trap body. The seal (10) must not be twisted or distorted. Secure the adaptor using the 2 x M4 screws (12).



Installing into Two Part Waste (TFWA with GW50 or GW19 Gravity Waste)



Remove the nut (16), backing ring (15), pressure testing plug (17), waste pipe seal (14) and main black seal (10) from the Bath to Tray adaptor. Fit the replacement White Two Part Waste seal (18). If using a GW50 Gravity waste secure the pipe extension (19) using an approved ABS solvent cement. If using a GW19 Gravity waste the extension piece is not required. When cured lower the Bath to Tray Adaptor tube into the Two Part Waste. The seal (18) must not be twisted or distorted. Secure the adaptor using the 2 x M4 screws (12).



Maintenance

The combined TF75 or Two Part Waste and the Bath to Tray Adaptor are designed for low maintenance and reliable operation. As part of a regular maintenance programme check and clean the waste of accumulated hair or other waste material. As disassembly of the waste may not be possible without removal of the bath the combined waste should be cleaned using normal domestic bathroom cleaning materials. Do not use strong or concentrated acidic or alkaline cleaning materials as these may discolour or otherwise damage the product. AKW do not approve or recommend autoclave cleaning of any of the components due to the damage this can cause to the special engineering plastics used in the construction of this product. Flush clear of all residues using clean water.

Contact Us

AKW[®]
Life Made Better

Orders & Quotes

01905 823 299
orders@akw-ltd.co.uk

General Enquiries

01905 823 298
sales@akw-ltd.co.uk

Technical Enquiries

01905 560 219
tech@akw-ltd.co.uk

Kitchen Enquiries

01905 823 262
kitchens@akw-ltd.co.uk

Fax

01905 823 297

AKW

Pointon Way, Hampton Lovett
Droitwich Spa, WR9 0LR

www.akw-ltd.co.uk

orders.akw-ltd.co.uk

Follow us on Social:



Guarantee

The life time guarantee only applies to manufacturing or material defects, conditional on the one-time correct installation of the product and does not apply to blockages, inappropriate use or accidental damage. This does not cover damage or defects that result from incorrect installation, lack of maintenance including the build up of grime, dirt or lime-scale and water-borne debris, damage resulting from inappropriate cleaning or water ingress, damage from water freezing or extreme temperature changes. Damage or defects that result from repairs or modifications undertaken by unauthorised persons who are not maintenance engineers. This guarantee excludes general wear and tear through usage and does not apply to surface finishes.

What to do if something goes wrong?

In the event that you should encounter a problem with this product, please contact your local installer and if this does not resolve the issue, then contact AKW technical team who will provide further advice and, if necessary, arrange for a maintenance engineer to visit and report any issues. See the T&Cs on our website or our catalogue for further information. None of the foregoing affects your statutory rights.