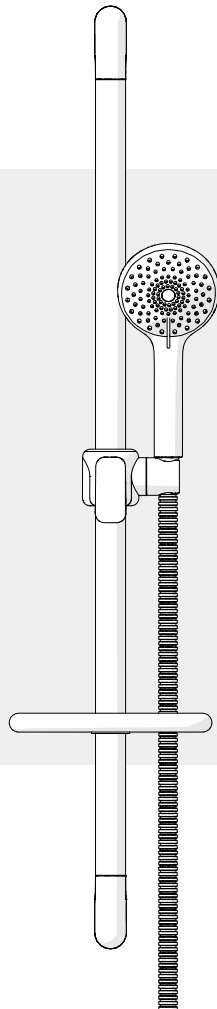


AKW[®]
Life Made Better

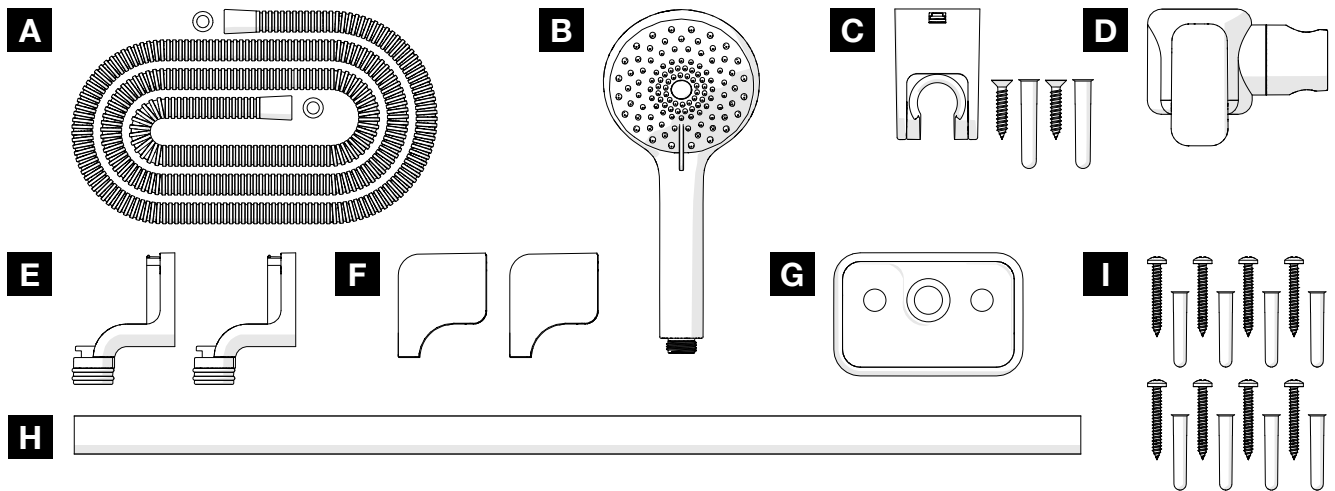
Care Shower Accessory Kit

INSTALLATION INSTRUCTIONS



Please read all instructions before installation and leave this document with the end user for future reference as it contains important warranty information

Parts Supplied



Safety

- 150kg load rating.
- Have the correct tools available.
- Fixings provided are suitable for solid walls only. Plasterboard or stud walls may require specialist fixings.
- When drilling into walls, check first for hidden pipes and cables.
- Use safety eye wear when drilling.
- Keep children away from the installation and away from small parts and packaging.

Parts

QTY

A	2M Shower Hose* (21-005-097)	1
B	White Handset* (21-005-087) or Chrome Handset* (21-005-108)	1
C	Wall Bracket	1
D	Riser	1
E	Elbow Bracket	2
F	Elbow Cover	2
G	Shelf	1
H	Rail	1
I	Screw and Wall Plug	8

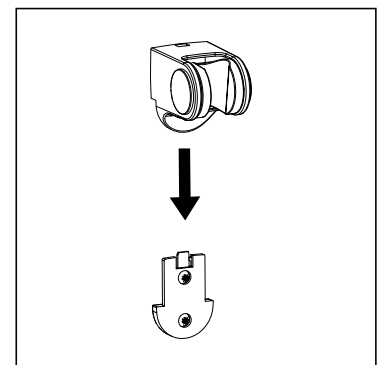
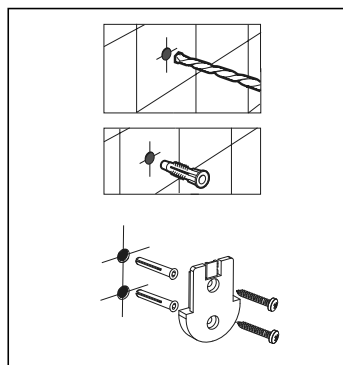
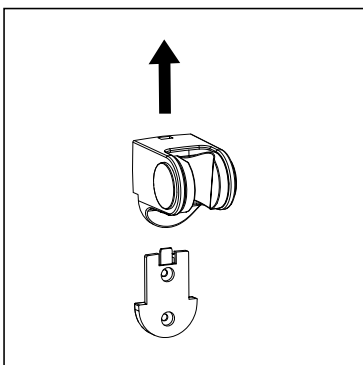


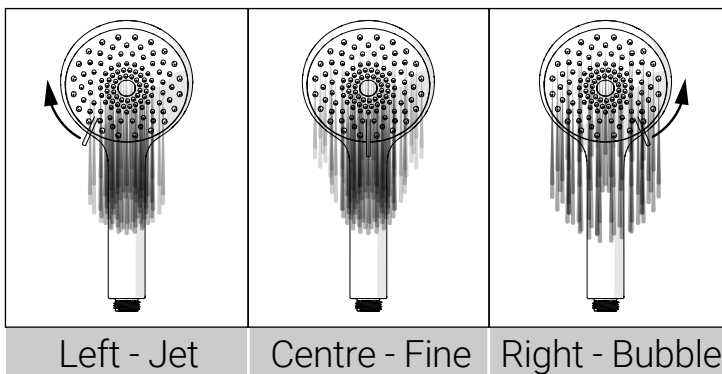
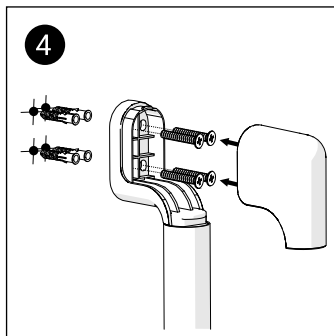
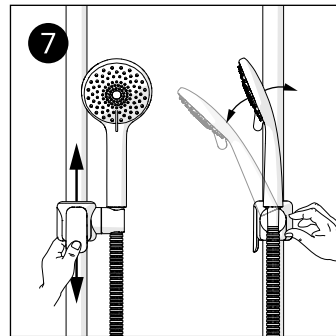
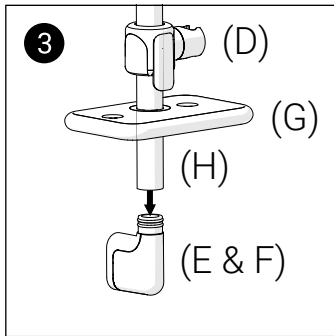
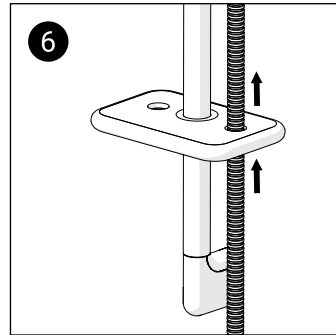
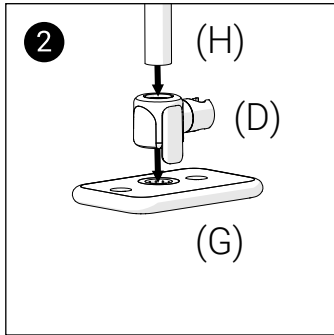
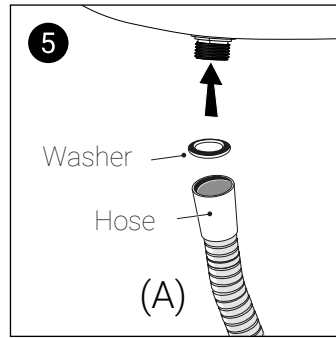
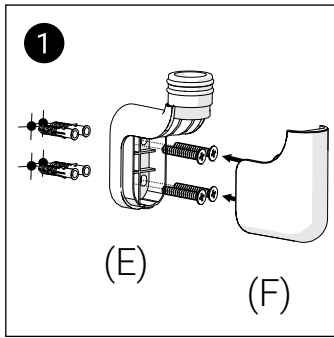
R N I B

Tried and Tested



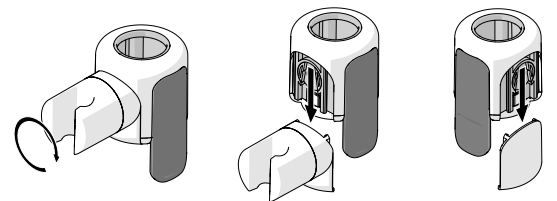
Installing the shower handset wall bracket (C)



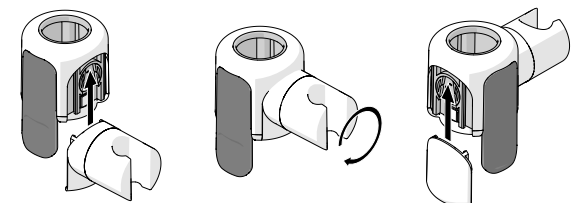


- 1 Determine the vertical position. Mark and drill top & bottom holes in the wall and fix bottom bracket (E & F) to the wall.
- 2 Slide in the accessories (D) & (G) onto (H).
- 3 Locate the rail notch on the back of bottom elbow (E) and attach the rail (H).
- 4 Screw the top elbow to the wall securely and attach the elbow covers.
- 5 Screw the shower hose (A) onto shower or mixer.
- 6 Feed the shower hose through a shower hose retainer hole (left or right) on the shelf (G).
- 7 Locate shower handset (B) into holder and adjust height, position and spray pattern.

⚠ Riser can be configured to mount handset on either left or right.



1. Unlock - Rotate 180°
2. Remove holder
3. Remove cover



4. Insert holder on opposite side
5. Lock - Rotate 180°
6. Insert cover

Contact Us

AKW
Life Made Better

Orders & Quotes

01905 823 299
orders@akw-ltd.co.uk

General Enquiries

01905 823 298
sales@akw-ltd.co.uk

Technical Enquiries

01905 560 219
tech@akw-ltd.co.uk

Kitchen Enquiries

01905 823 262
kitchens@akw-ltd.co.uk

Fax

01905 823 297

AKW

Pointon Way, Hampton Lovett
Droitwich Spa, WR9 0LR

www.akw-ltd.co.uk
orders.akw-ltd.co.uk

Follow us on Social:



Warranty

Warranty applies only to manufacturing or material defects, conditional on the one-time correct installation of the product. It does not apply to:

- Inappropriate use or accidental damage.
- Damage or defects that result from incorrect installation.
- Lack of maintenance including the build up of grime or damage resulting from inappropriate cleaning.
- Damage or defects that result from repairs or modifications undertaken by unauthorised persons.
- General wear and tear through usage and does not apply to surface finishes.

Warranty period starts from the date of installation. See the T&Cs on our website for further information.

Select 1 of 2 ways to activate your warranty



1. Scan using your Smart Device



2. Visit Online

akw-ltd.co.uk/warranty-information

What to do if something goes wrong?

In the event that you encounter a problem with this product, follow the trouble shooting guide if applicable, then contact your local installer. If the issue is still unresolved, contact AKW Technical Enquiries who will provide further advice and arrange for a maintenance engineer to visit if necessary. None of the foregoing affects your statutory rights.