

USER MANUAL

BEDIENUNGSANLEITUNG
MODE D'EMPLOI
ISTRUZIONI PER L'USO



English.....	4
Español	14
Português.....	23
Suomi	32
Magyar	41
Slovenščina	50
Hrvatski	59
Srpski	68
Български.....	77
Română	86
Türkçe.....	95
中文	104

EN **For your safety**

Intended use


The shower toilet assigned to the wall-mounted control panel can be operated by touching the touch-sensitive surface. Use for any other purpose is deemed improper.

Misuse

Geberit accepts no liability for the consequences arising from misuse.

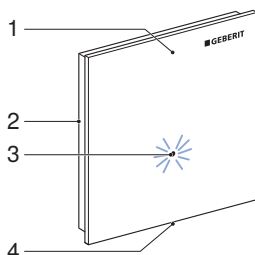
Explanation of essential information

The following signal word is used to refer to essential information.

Symbol	Signal word and meaning
	Symbol only. Refers to important information.

Getting to know your device

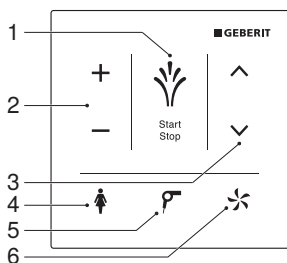
The wall-mounted control panel at a glance



- 1 Wall-mounted control panel, removable
- 2 Mounting plate for wall mounting
- 3 LED display
- 4 Release opening

The sensor buttons at a glance

Touching the relevant sensor button actuates the corresponding function on the assigned shower toilet.



- 1 <Shower> sensor button
- 2 <+>/<-> sensor button
- 3 <Forwards>/<Backwards> sensor button
- 4 <Lady shower> sensor button
- 5 <Dryer> sensor button
- 6 <Odour extraction> sensor button

EN How to use the device

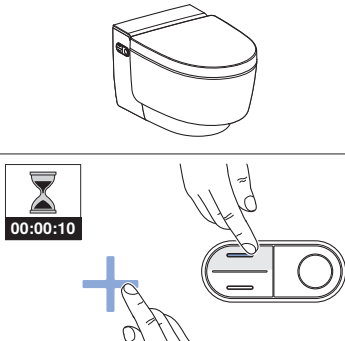
Assigning to the wall-mounted control panel

Prerequisite

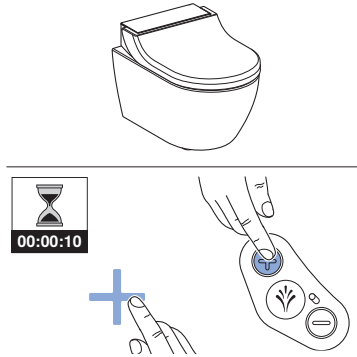
- The basic settings for the shower toilet can be adapted to suit your individual requirements via remote control. → See shower toilet user manual.

- 1 Assign the shower toilet using the information for the wall-mounted control panel.

- i** Assign the Geberit AquaClean Mera to the wall-mounted control panel by touching the <up> button on the side control panel of the shower toilet and the <+> sensor button on the wall-mounted control panel simultaneously for 10 seconds.

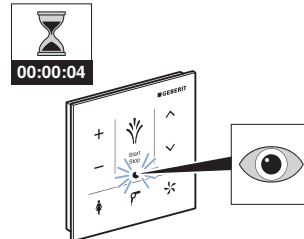


- i** Assign the Geberit AquaClean Tuma to the wall-mounted control panel by pressing the <+> button on the side control panel of the shower toilet and the <Geberit logo> on the wall-mounted control panel simultaneously for 10 seconds.



Result

- ✓ The LED display lights up for 4 seconds.



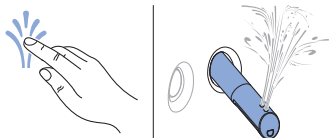
- ✓ The shower toilet can be operated using the wall-mounted control panel.

Using the anal shower

Prerequisite

- You are sitting down on the WC seat ring.

- ▶ Touch the <Shower> sensor button.



Result

- ✓ The shower procedure starts and runs for a few seconds. This can be interrupted at any time by touching the sensor button again.

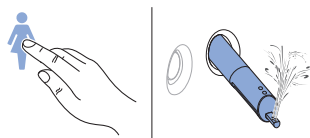
Using the Lady shower

- i** The woman's intimate area is a very sensitive zone and requires special and prudent care. The Lady shower must be set to your ergonomic conditions to achieve an optimal cleaning result. The position of the spray nozzle and the spray intensity must be selected so that the shower spray cannot penetrate the vagina.

Prerequisite

- You are sitting down on the WC seat ring.

- ▶ Touch the <Lady shower> sensor button.



Result

- ✓ The shower procedure starts and runs for a few seconds. This can be interrupted at any time by touching the sensor button again.

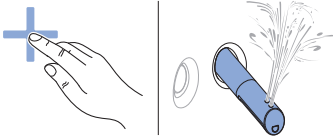
Adjusting the shower procedure to your personal needs

Set the shower intensity

Prerequisite

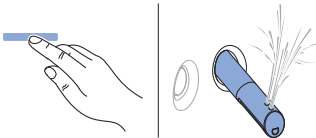
- The shower procedure is running.
- The spray intensity can be set in 5 levels.

1 Touch the <+> sensor button.



- ✓ The shower spray becomes stronger.

2 Touch the <-> sensor button.



- ✓ The shower spray becomes weaker.

Result

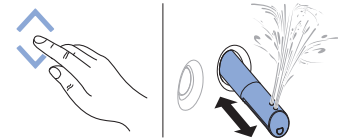
- ✓ The shower spray is optimally adjusted to suit your requirements.

Set the spray arm position

Prerequisite

- The shower procedure is running.
- The spray arm position can be set in 5 levels.

▶ Touch the <Forwards> or <Backwards> sensor button.



- ✓ The spray arm moves forwards or backwards.

Result

- ✓ The spray arm is optimally positioned.

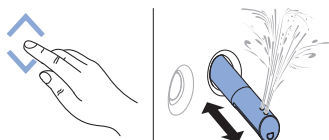
Switch oscillating motion of the spray nozzle on and off

- i** The oscillating motion of the spray arm increases the cleaning effect.

Prerequisite

- The shower procedure is running.

- ▶ Touch the <Forwards> and <Backwards> sensor buttons at the same time to switch the oscillating motion on during the shower procedure.



Result

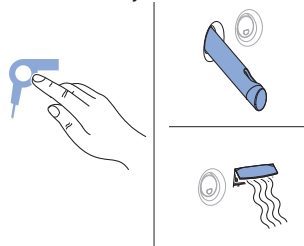
- ✓ The oscillating motion is switched on. This can be switched off at any time by touching the sensor buttons again.

Using the dryer

Prerequisite

- You have ended the shower procedure.

- ▶ Touch the <Dryer> sensor button.



Result

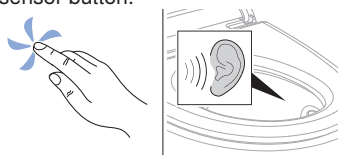
- ✓ The drying procedure starts and runs for a few seconds. This can be interrupted at any time by touching the sensor button again.

Use the odour extraction unit

Prerequisite

- You are sitting down on the WC seat ring.

- ▶ Touch the <Odour extraction> sensor button.



Result

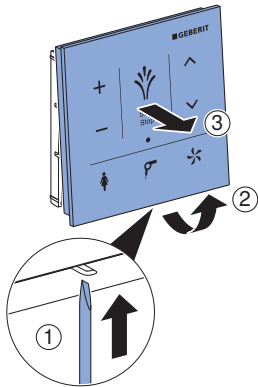
- ✓ The odour extraction unit starts and runs for a few seconds. This can be interrupted at any time by touching the sensor button again.

EN Troubleshooting

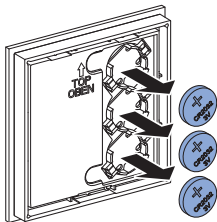
Replace the battery

1 Unlock the interlock by using the screwdriver on the release opening.

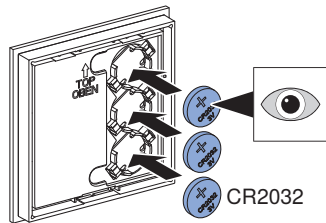
2 Pull the bottom of the wall-mounted control panel forward and remove it from the mounting plate.



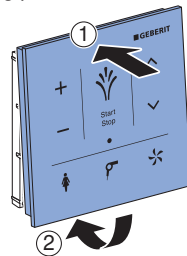
3 Extract the used batteries. Dispose of the used batteries appropriately.



4 Insert the new CR2032 batteries.



5 Attach the top of the wall-mounted control panel and secure it to the mounting plate.



i Check whether the wall-mounted control panel is securely locked into the mounting plate.

The wall-mounted control panel is without function

The following table will help you with troubleshooting if:

- the wall-mounted control panel is not functioning.
- the shower toilet cannot be controlled with the wall-mounted control panel.



Should the remote control fail to function, you can use the lateral control panel instead.

Description of problem	Cause	Fault clearance
LED display flashed red.	Batteries flat	<ul style="list-style-type: none"> ▶ Replace the batteries. → See "Replace the battery", page 10.
Touch-sensitive surface does not respond when touched.	Malfunction has occurred	<ul style="list-style-type: none"> ▶ Check batteries in the wall-mounted control panel. ▶ Check mains connection to the shower toilet. ▶ Re-assign wall-mounted control panel. → See "Assigning to the wall-mounted control panel", page 6.
LED display flashes red twice, followed by a short break.	Pairing unsuccessful User interface inactive	<ul style="list-style-type: none"> ▶ Re-assign wall-mounted control panel. → See "Assigning to the wall-mounted control panel", page 6.

How to clean the device

Caring for and cleaning smooth surfaces

All smooth surfaces can be cleaned hygienically with water and a mild, liquid cleaning agent that is kind to the skin.



Aggressive and scouring cleaning agents can damage the surface. Only use mild, liquid cleaning agents that are kind to the skin. The Geberit AquaClean cleaning set (art. no. 242.547.00.1) includes a ready-made cleaning agent that is optimal for cleaning all Geberit AquaClean surfaces.

EN Disposal

Disposal of waste electrical and electronic equipment



The symbol of the crossed-out wheeled bin means that waste electrical and electronic equipment (WEEE) must be disposed of separately and not with other non-recyclable waste. End users are legally obliged to return old equipment to public waste disposal authorities, distributors, or Geberit for proper disposal. Many distributors of electrical and electronic equipment are obliged to take back WEEE free of charge. Contact the responsible sales or service company to return the WEEE to Geberit.

Used batteries and accumulators that are not enclosed within the old equipment, as well as lamps that can be removed from the old equipment in a non-destructive manner, must be separated from the old equipment before being handed over to a disposal point.

If personal data is stored on the old equipment, end users themselves are responsible for deleting it before handing it over to a disposal point.

Technical data and conformity

Technical data

Operating temperature	5–40 °C
Relative humidity	10–100 %
Frequency range	2400–2483.5 MHz
Maximum output power	0 dBm
Wireless technology	Bluetooth® Low Energy ¹⁾
Battery type	CR2032 (3 V)
Service life of batteries supplied	~ 2 years

¹⁾ The Bluetooth® brand and its logos are the property of Bluetooth SIG, Inc. and are under licence by Geberit.

Simplified EU Declaration of Conformity

Geberit International AG hereby declares that the radio equipment type wall-mounted control panel for Geberit AquaClean is in compliance with Directive 2014/53/EU.

The full text of the EU declaration of conformity is available at the following Internet address: <https://doc.geberit.com/968860000.pdf>.

Simplified UK Declaration of Conformity

Geberit International AG hereby declares that the radio equipment type wall-mounted control panel for Geberit AquaClean is in compliance with the 2017 Radio Equipment Regulations.

The full text of the UK declaration of conformity is available at the following Internet address: <https://doc.geberit.com/970860000.pdf>.