

## **EN** User manual Centerlift 960



### **EN** Products

**Height adjustable frames for kitchen islands**  
CENTERLIFT 960H

1. Introduction
2. Declaration of conformity with EU directives
3. Intended use
4. Technical data
5. Safe use
6. Safety arrangements
7. Load distribution and side forces
8. Actions after use
9. Instructions for recycling
10. Spare parts list
11. Electric system / Electric diagram

# 1. Introduction

We have the pleasure to deliver a Granberg Centerlift 960, a motorised kitchen island lift. Height adjustment is done by floor-mounted motors.

**Only authorized persons may use Centerlift 960!**

Authorization means obligation to read and follow the instructions.

It is very important that you read and understands the instructions before you use the device.

If you have any questions - contact your supplier.

This Instruction manual shall be available for all concerned persons, be kept in a protected place and shall follow the product, if it is moved to another installation site or another house or apartment owner.

**Correct use, operation, inspections and maintenance are decisive for efficient and safe work.**

## 2. Declaration of conformity with EU directives

This product is CE-marked and is thereby declared to conform to the basic functionality and safety requirements of current Machinery, EMC and Low Voltage Directives.

"EG Declaration of Conformity" is found in a separate document.

## 3. Intended use

Centerlift 960 is intended to vertically lift and lower the worktop to achieve a convenient location performing normal kitchen work. The operation shall be indoors, under normal housing conditions regarding temperature, humidity and lighting. Electric hob and a sink can be incorporated.

Centerlift 960 is not intended for use in moist environments.

It is assumed that the work top benches and the cabinets are made according the standards EN 1116 and EN 1153.



If the lifting system is placed beside another cabinet, make sure that the countertop on adjacent cabinets must not protrude over its cabinet frame. Protrusion of the countertop to adjacent cabinets constitute a risk of crushing and will not be accepted!

Any use other than the above is subject to approval by Granberg and definition of the current allowable working conditions. Contact Granberg to planned change approved!

Solid wood benches are not recommended.

## 4. Technical data

<b>Installation</b>	Floor mounted
<b>Front height</b>	103 mm
<b>Frame width (without front)</b>	1148 / 1348 / 1548 / 1748 / 1948 / 2148 / 2348 / 2548 / 2748 mm
<b>Frame depth (without front)</b>	548 / 748 / 948 1148
<b>Width worktop</b>	1200 / 1400 / 1600 / 1800 / 2000 / 2200 / 2400 / 2600 mm
<b>Depth worktop</b>	600 / 800 / 1000 / 1200 mm
<b>Height adjustment</b>	400 mm
<b>Speed level</b>	30 mm / S.
<b>Electrical connection</b>	Plug for 230 V, max 5.A
<b>Plumbing connections</b>	Connection is made with flexible hoses
<b>Max no. of full work cycles per hour</b>	5
<b>Safety</b>	The safety strip is placed under the frame. If anything touches the safety strip, the lifting unit stops
<b>Lifting force</b>	200 kg
<b>IP-class</b>	IP 20

## 5. Safe use

Centerlift 960 is provided with safety arrangements in order to prevent and avoid damages and accidents. It is however still very important that the operator is well instructed in how to install and operate Centerlift 960 unit. In the following, Centerlift 960 means the lifting machine and the fitted accessories, such as hob and a sink.

- Only use the Centerlift 960 unit for its intended purpose.
- The operation and use must be made in such way that there is no risk for damages on persons and property.
- Centerlift 960 may only be operated by persons who have read and understood these instructions, and are authorized to use it.
- Be aware of that you as an operator are responsible for that nobody is damaged. Centerlift 960 and the work area must be in proper condition. Centerlift 960 must not be used if any fault has appeared which influences the functions or the operation safety. It shall also not be used if it has been repaired, altered or adjusted without permission of a responsible person.
- Do not touch any part of the lift when operating it. Only press the button for desired motion direction.
- Do not put hands, arms, or any other part of the body or any object under the worktop or the cabinets when it is operated.
- Do not raise Centerlift 960 unless the space above it is free from persons or obstacles.
- Notice the jamming risk between Centerlift 960 and adjacent worktops and cabinets.
- Only stable and securely loaded items may be handled. Mind the tilting risk for objects on the worktop, which are unstable, e.g. carelessly piled.
- Safety devices must not be taken out of service or removed.
- Alterations of Centerlift 960 that influence the operational safety or the functions are not allowed.
- Do not overload Centerlift 960 and make sure that the load distribution is correct.
- It is absolutely forbidden for persons to stay on the worktop or to use the lift for lifting persons.
- Always distribute the load uniformly on the worktop, to avoid cantilevered loading. Consider the risk that the load can roll, slide or fall over.
- Use safe and sufficient lifting methods when handling load to and from Centerlift 960. In particular beware when handling heavy items, and goods with hazardous content or with sharp corners and edges.
- Be aware of the risks when you work on Centerlift 960. The risks are depending on the arrangements on the worktop.
- Centerlift 960 shall regularly, once a year, be inspected in order to prevent accidents.
- Applicable Building and Safe use Regulations must be complied with.
- Do not use Centerlift 960 as a lifting jack, e.g. for lifting things from the floor.
- Do not use Centerlift 960 in a potentially explosive environment.
- When the operation is in a public location, particularly when children can enter the work area, the operator shall make satisfactory arrangements to prevent persons from entering the hazardous area when the lift is being operated, or it has been lowered from the parking position, e.g. by means of blocking the work area or by means of adding protection devices.
- Decals and markings must not be removed or made illegible.
- During inspections, service and repair work there shall be no load on the worktop.
- Competent persons only must carry out installation, service and repair works.
- Only Granberg original spare parts shall be used when replacing any parts. Our warranty commitment can otherwise be invalidated.

## 6. Safety arrangements

The safety strip is placed under the frame. If anything touches the safety strip, the lifting unit stops

**Check the safety strip function often.**

## 7. Load distribution and side forces

Note that the max. rated load means that the load is distributed over the entire worktop.  
Point loads are not allowed.

It is absolutely forbidden for persons to stay on the worktop or to use the lift for lifting persons.

Basic loading requirements:

**100 % of the rated load distributed over the entire cabinet volume.**

- **Horizontal forces are not allowed.**
- **Horizontal forces can appear, for example, when pressing onto the shelves or the load.**

It is difficult to estimate the size of the actual horizontal force, so utmost care must always be taken.  
Further to the incorporated safety arrangements additional safety actions may be required on or at the product.  
Discuss suitable actions with your Granberg representative or with the health and safety inspection.

We recommend that a Risk assessment in accordance with the Machinery Directive shall be made for the actual working conditions. If the owner fits accessories, contact Granberg to get approval for the loading conditions.

**Maximum load: 200 kg**

**Top board and all other equipment must be included in the maximum load.**

**Note that the max. rated load means that the load is distributed over the entire worktop. Point loads are not allowed.**

## 8. Actions after use

Centerlift 960 shall after use be left in its current position.

Switch off the main switch and lock it in closed position, if unauthorized use can occur.

To prevent unauthorized use can it is also possible to furnish the control panel with a key switch, by means of which the control circuit is disconnected.

## 9. Instructions for recycling

When Centerlift 960 shall be re-used it must be cleaned, inspected and go through a full operation test before it is installed on the new site.

We recommend the machine to be sent to Granberg or to the Granberg distributor to get this done.  
The machine is manufactured from re-usable materials or from materials that can be recycled.

## 10. Spare parts list

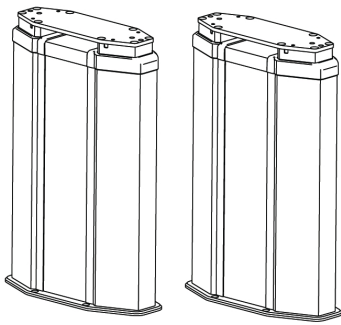
If any component does not work or has broken, contact your supplier. Only Granberg original spare parts must be used when replacing any parts. Our warranty commitment may otherwise be invalidated.

### Return of spare parts:

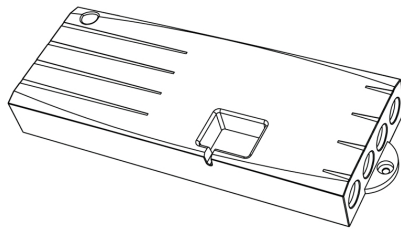
Contact Granberg prior to any return of parts.

Do not return any parts that have been worn out during normal operation or accidentally damaged. Only return worn or damaged parts if it is considered that the fault is covered by our warranty conditions. In such cases, return the parts without delay, otherwise the right to replacement may be lost.

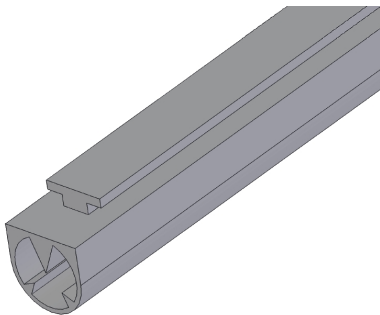
When ordering spare parts always quote the manufacturing number and type.



Motors



Control box



Safety strip



Control button, Aluminium

## 11. Electric system / Electric diagram

