



closo●mat®

**Considerations in
toileting provision for
bariatrics. Guidance for
occupational therapists.**

A Closomat White Paper

April 2021

In the UK today, over a quarter of adults are classed as obese based on a Body Mass Index (BMI) of 30+. The number of obese adults has nearly doubled since 1993 (Baker, 2021).



Table of Contents

Table of Contents	3
1.0 Abstract	4
1.1 Using the toilet	5
2.0 Bariatric toileting	6-9
2.0 Toilet lifts	6
2.1 Shower chair	7
2.2 Hoist	8
2.3 Weight load and body mass	9
3.0 Wash and dry (shower) toilet	10
3.1 Bariatric toilet seating	11
3.2 Douche spray	12
3.3 Operation	13
4.0 Closomat – who we are and how we can help	14
4.1 Our products are customisable and flexible	15
4.2 We're a UK-based manufacturer, and on hand to help	16
5.0 Conclusion	17

Bariatrics refers to a branch of medicine that focuses on causes, prevention and treatment of obesity, defined by weight. Many of the functional challenges faced are caused by a plus sized person's body shape who may or may not be bariatric in weight. Much of the content in this paper is appropriate for bariatric services or individuals considered plus sized.

Increased body mass has an impact on a person's ability to participate in daily life, even before associated health issues are taken into account.

Everyone goes to the toilet on average eight times a day. Adaptations to ensure safe and independent toileting for larger people need to be carefully considered to optimise effective personal hygiene choice and dignity.

Guidelines recommend that in a bariatric care environment, considerations should be given to provide a wider and higher toilet seat, with a minimum turning radius of 1.8m/6ft to accommodate larger wheelchairs and ensure adequate distance between toilet and sink to allow the person to rise without using the sink for support. However, each individual should be assessed within the environment where the occupation of toileting will take place.

If difficulties with using the toilet are identified following an assessment, a thorough understanding of the barriers to independent toileting should be established. A person's weight, and corresponding size, can influence mobility and agility.

If people need support to lower or raise themselves when transferring on and off the toilet, the basin is often used as a support and the provision of a grab rail may be fitted as an alternative. Because of the person's weight, consideration should be given to the load placed upon the grabrail and whether this method of supporting safe transfers is suitable in the medium or long-term.

Toilet lifts.



Aerolet Tilt

If the person can weight bear and mobilise and is having difficulty with toilet transfers, a toilet lift should be considered following a thorough assessment, as it may provide appropriate support.

A toilet lift is fitted over the toilet and replicates the natural movement of standing and sitting. They assist people with limited mobility transfer on and off the toilet with minimal or no carer assistance. There are two types available: the tilting toilet lift which assists with sit to stand in a more normal ‘tilting’ motion; and the vertical lift, useful for people who have to ‘lock’ their knees before mobilising.

The Aerolet toilet lift accommodates a weight loading of up to 150kg/24stone. A bariatric version (tilting only) including the Big John seat is available, which will hold up to 250kg/39 stone. (See page 11)



Aerolet Vertical

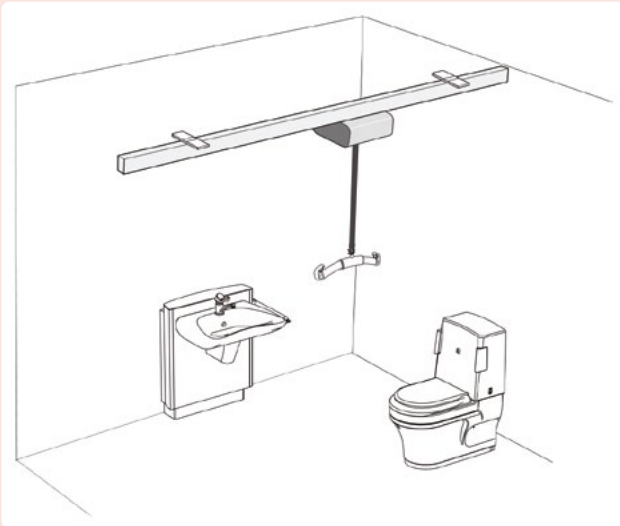
Note: The Bariatric Aerolet is **NOT** available as a vertical version.

Shower chair.

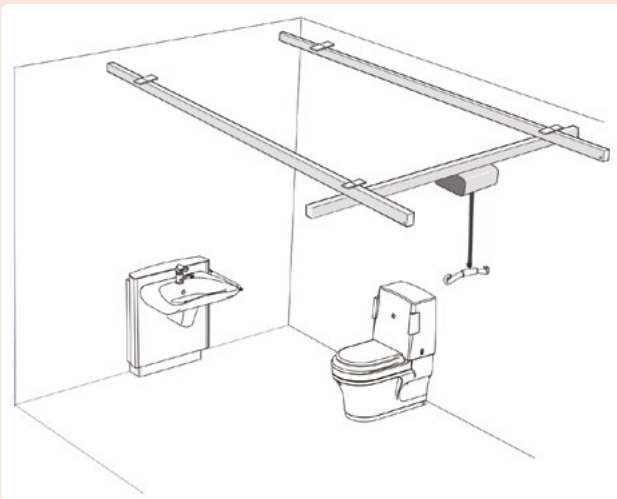


A shower/toileting chair should have an appropriately positioned opening in the padded seat to enable access to the toilet pan and douche/drying mechanism without the person having to transfer on to the toilet from the chair. The width and weight limit of the shower chair should be reviewed for suitability for people with a bariatric weight/size.

Hoist.



Single-track system



H-track system

If a person cannot weight bear and transfer, even with assistance, a hoist may be required – taking into account manual handling guidance and weight limits of equipment.

Variants include mobile hoists and ceiling track hoists. Choice should be based on a risk assessment, and whether it is for:

- A single or multi-person environment
- For use in one room or beyond
- The layout of the room i.e. whether ceilings and walls are robust enough to bear the necessary load, and the positioning, and style/protruberance of fixtures and fittings.
- The number of carers required to assist the person.

The type of transfer is also a consideration, for example, is the person moving from wheelchair to toilet (at similar height), or is there a requirement for height-adjustability, e.g. from wheelchair to changing table.

If a person is having difficulty with intimate cleansing after using the toilet, the provision of a wash and dry toilet will often be an appropriate solution to achieving effective cleanliness, independence and reduction in reliance upon carers for assistance.

There are two main influencing factors when working with a person of bariatric weight or indeed plus sized: weight loading and body mass.

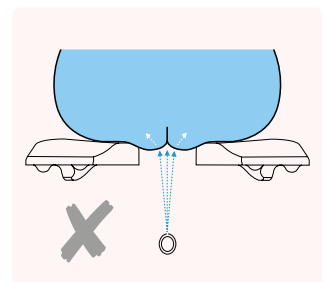
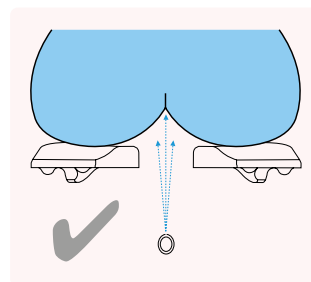
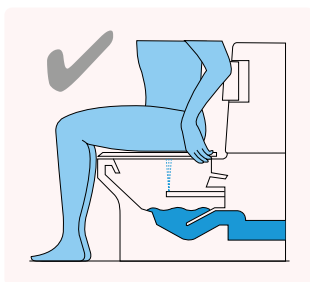
Weight loading:

The toilet itself needs to have an appropriate weight limit for the person/people using it. The seat and brackets used also need to have a suitable weight limit. Conventional toilets and most wash and dry toilet seats (not the toilet pan) bear up to 127kg/21 stone. Most bariatric aids will withstand up to 346.5kg/55st. The Closomat Palma Vita Bariatric wash and dry toilet accommodates 362kg/57 stone.

Body mass:

The person needs to be able to sit securely on the wash and dry toilet, and in the correct position on the seat and pan.

The person must sit comfortably, with their back supported against the cistern and their torso and legs forming a 90° angle.



A larger body can often cause the person to sit too far forward, so their bottom does not cover the seat aperture. If this is not achieved, the person can feel 'perched' on the toilet causing instability.

Buttocks need to be supported but slightly parted to enable effective bowel evacuation and cleaning.

Wash and Dry Toilets were invented by Closomat over 60 years ago to provide solutions for people having difficulties with toileting and, in particular, with cleaning themselves afterwards.

A wash and dry (shower) toilet eliminates the requirement for comprehensive intimate care. It combines a toilet, washing douche and drier in one unit.

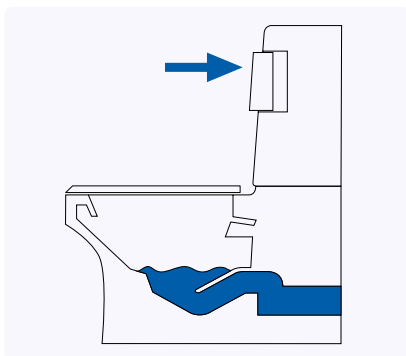
The toilet cleans and dries the person after use, removing the need for manual cleansing with toilet tissue and eliminating associated hygiene and contamination issues. It also enhances the person's independence and self-care skills.

Cleaning with toilet tissue requires manual, mental and physical dexterity, flexibility, and balance. It requires intimate hand: body contact, either by the person or their carer. As the wash and dry toilet effectively washes the anal area, it eliminates the potential for faecal smearing and/or cross-contamination under fingernails etc.

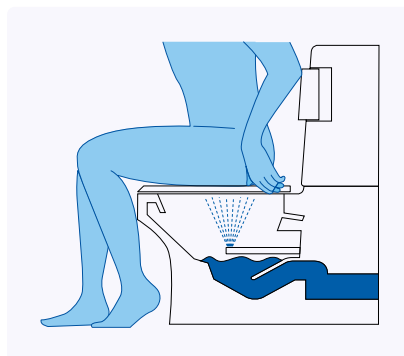
Cleaning with the function of a wash and dry toilet requires the ability to sit in the correct position (which may require facilitation to achieve the correct posture) and the ability to trigger a switch to begin the wash and dry process.

Selection of a wash and dry toilet will be influenced by individualised assessment, including a thorough evaluation of the person, the environment (including equipment used, current toilet and layout of the bathroom) and the occupation of toileting. The cost is not just that of whichever unit is chosen, but what adaptation – if any – will be required to accommodate the unit, and ensure it works effectively and the potential saving of any carer support that will no longer be required.

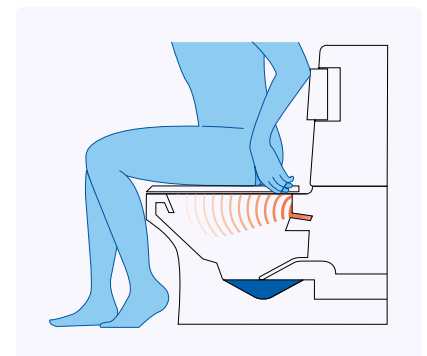
Closomat Palma Vita safe working load: 190kg/30st.



Flushing



Washing



Drying

The Big John seat.



Bariatric Palma Vita

The size of the seat may need to be larger, to accommodate increased body mass. A bariatric seat tends to be deeper – (60mm/2.5ins) and wider – 486mm/19ins compared to 410mm/16ins. Toilet seats are available which will safely bear up to 363kg/57st. For larger-bodied people, a bariatric bench may be more comfortable. This is a padded full toilet seat or horse-shoe seat mounted on a steel frame with the bench positioned over the top of the toilet. Flat-topped versions and armrests are available. A bench will usually hold up to 349kg/55st as standard.



Bariatric Aerolet (Tilting only)

Note: The Bariatric Aerolet is **NOT** available as a vertical version.

Douche spray.



The positioning of the douche can be set in most cases to personal requirements, to achieve the fundamental aim of cleaning the genital/anal area. Once set, it is not likely to be adjusted unless the person's needs change.

The positioning, and angle, of the douche within the pan is set at point-of-manufacture and varies between models of wash and dry toilets. Expert advice from one of Closomat's product specialists will facilitate an individualised recommendation.

Ensure there is adequate clearance between the douche and the bottom of the seat for effective cleaning, and any possible avoidance of potential douche/body contact (this may be an issue with bariatric persons due to excess skin in the perianal area).

The douche position and extension are key to effective washing. A standard douche will achieve effective cleansing for most people who can maintain an effective posture. If an appropriate seated position cannot be achieved, an extended douche arm may be specified.

The douche spray pattern also varies and should be wide enough to cleanse effectively.

The amount of water differs between manufacturers: the more water that passes into the douche, the more efficient the clean. Some wash and dry toilets use as little as 2l/minute, others 8l/min.

Operation.



Touch sensitive hand/foot switch

It is important that the person is able to operate the controls for the wash and dry toilet independently, if possible. The cognitive function of the person should be fully evaluated to ensure that the most appropriate method of operation is chosen. Some units have complex controls positioned on a handset which can be located to the side of the unit and wall mounted.

A flush which incorporates a wash and dry function is located on the cistern of the Closomat which can be operated whilst seated. There are also other options such as a pressure sensitive switch which can be operated with the elbow, foot or fist grip.

Where bolt-on wash and dry units are used, the conventional flush has to be employed before/after the douching process, which will require the person to transfer off the toilet, turn to flush, then manoeuvre back on to the toilet (this may increase the risk of falls).

Further reading: Guide to specification for wash and dry (shower) toilets.

Reference:

Baker, C. (2021) Obesity Statistics. House of Commons Briefing Paper. Retrieved from: <https://commonslibrary.parliament.uk/research-briefings/sn03336/> accessed on 17.01.2021.

We're specialists in helping people with specific toileting needs.

We invented the Wash and Dry toilet over 60 years ago, and tens of thousands of people use our products every day to help them live their best lives. So we can say, with confidence, that we understand the needs of users better than any other manufacturer and we use this unrivalled knowledge to determine what is important (and what is not!).

We help OTs build specifications every day, and we can be there for you whether you need us on site with you to help determine the best possible solution for your client, or we can do this remotely, should access not be possible for clinical reasons.



Our products have been designed in consultation with healthcare professionals and have a range of clinical, health and well-being benefits.

We know that everyone is different, even if they have the same disability or condition. That's why we ensure our products are customisable in thousands of ways. This may seem complicated; but it isn't. It simply means that we can support you whatever your client's requirements are at the time of specification or into the future.



We're the only specialist UK-based manufacturer of Wash and Dry Toilets.

We have our own service team and our own engineers, meaning that we can ensure a consistent and expert back up service for our products, for you, and for your clients.

We understand that our products provide a much-valued level of independence, which is relied on every day. As such our in-house service team are on hand to maintain, repair and adapt your toilet for as long as your client needs it.



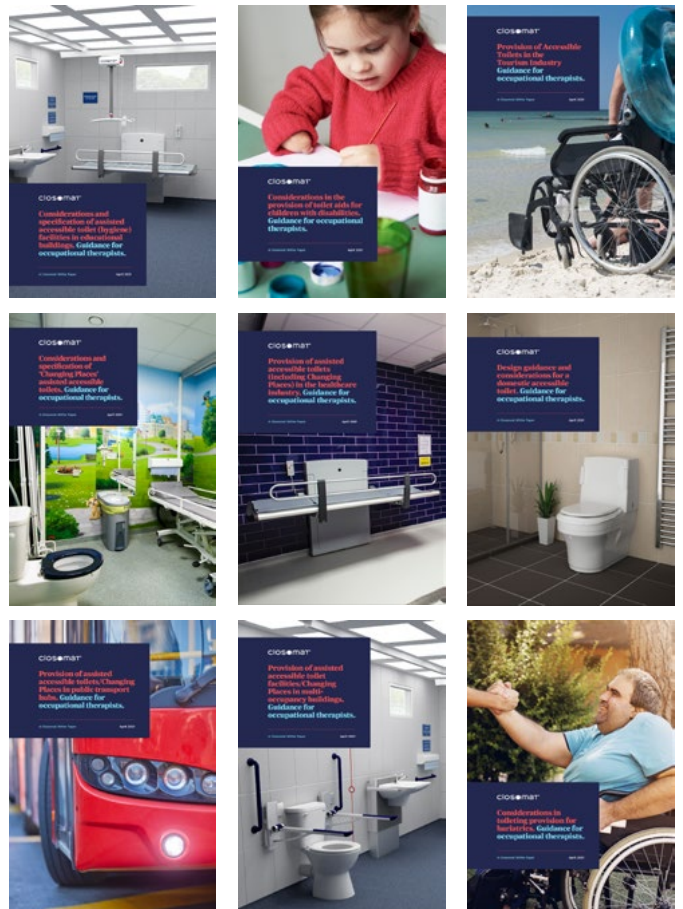
DESIGNED AND BUILT IN BRITAIN

We hope that you have found this white paper informative and that it has given you a good overview of what needs to be considered when you are building a specification for your clients with toileting needs.

This white paper is part of a series available at: www.closomat.co.uk.

In these white papers we've covered what you should keep in mind, with particular importance being given to the needs of the user.

If you require any further support, such as more detailed technical data, or help with specifications then please get in touch (details on the following page).



Closomat Limited

Building 1, Brooklands Place,
Brooklands Road,
Sale, Cheshire, M33 3SD

Freephone: 0800 374 076

Telephone: 0161 969 1199

Fax: 0161 973 2711

General Enquiries: info@closomat.co.uk

Sales Orders/Enquiries: sales@closomat.co.uk

Quotations/Pricing: quotations@closomat.co.uk

To build a specification, visit our dedicated configurator:

configurator.closomat.co.uk/palma-vita

closomat[®]

closomat.co.uk