

Access & Ramp DIRECTORY



Don't miss the **ALL NEW** products!



Welcome!



The **biggest ever** range of **mobility access solutions** from **Enable Access** is here!

Enable Access is a leading British manufacturer and distributor of mobility access and evacuation products. Our extensive range includes residential and commercial ramps, train ramps and evacuation chairs. With over twenty-five years of experience innovating for an accessible world, our products are designed with safety, ease of use, and reliability in mind.

Our premium ramp ranges are manufactured in Britain using aluminium, a repeatably recyclable metal, to ensure optimal quality and reduced shipping emissions. Whether you are looking for a mobility solution for your home or business, or need to ensure safe evacuation in an emergency, ***Enable Access has the expertise to help.***

Our Values...

Dependability

Integrity is our core ethos; we strive to be a reliable and trustworthy supplier.

Range

We offer comprehensive ramp access solutions, quickly delivered at cost-effective prices.

Innovation

As a market-leading manufacturer, we are always pursuing new and improved, cost-effective access solutions.

Sustainability

Our culture of continual improvement and corporate responsibility fosters sustainable growth and care for the environment.

People

Our customers, suppliers, and motivated team are crucial to fulfilling our mission of 'Social inclusion at another level'.

Understanding

An accumulated wealth of expertise; combined with the desire to learn and listen, allows us to understand all of the customer's needs, whatever the situation.

Ramp Specifier Guide



4-5

Aerolight®
Full-Width Portable Ramps



8-17

Rollout-Trackway & Patio
Instant access for uneven ground



18-19

doorline™
Threshold Ramps



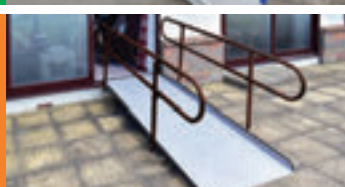
20-29

ultralight™
Channel Ramps



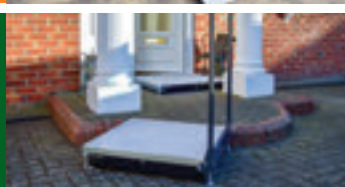
30-33

permaramp®
Relocatable External Ramps



34-41

Welcome®
Giant Half-Steps



42-45

NEW Welcome®
Residential Modular Ramp System



46-53

NEW Welcome®
Standalone Steps and Handrails



54-59

SRS™
Modular Ramp System



60-63

Metro®
Budget/Contract Products



64-65

Ramp Specifier Guide



Choosing the correct ramp is important, just like finding the right size shoe or the correct glasses. Please don't hesitate to give our experienced team a call if you need any assistance.

Choose your ramp type

Internal Steps/Thresholds 	Steps/Stairs 	Wood/Level Access Door Threshold 	uPVC Door Threshold 	Vehicle Access
doorline™-threshold wedge p24 	Aerolight™ p8 	Aerolight™ p8 	Aerolight™-Up&Over p11 	Aerolight™-Lifestyle p13
doorline™-variawedge p25 	Aerolight™-High Rise p10 	doorline™ p20 	The Butterfly Ramp™ p22 	Aerolight™-Broadfold p14
doorline™-neatedge p27 	permaramp™ p34 	permaramp™ p34 	permaramp™-adjust p36 	Aerolight™-Max p16
The Butterfly Ramp™ p22 	NEW Welcome® p46 	NEW Welcome® p46 	NEW Welcome® p46 	ultralight™-telescopic p32

Key icons



Suitable for all weathers



Compact Storage



Lightweight Solution



Look out for great tips



Leave-in-place



Fast install

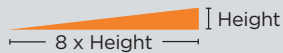
How steep?

1:6 (10°)*



Acceptable in some cases for short threshold ramps.

1:8 (7°)*



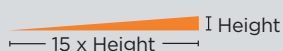
A useful balance between gradient and space suitable for portable ramps in some assisted applications and events etc.

1:12 (5°)



Often required by social services and local authorities. Minimum required by Building Regulations Document M for installed ramps.

1:15 (4°)



Sometimes required by social services and local authorities for independent access but typically for installed public access ramps.

*Assess safety/risk

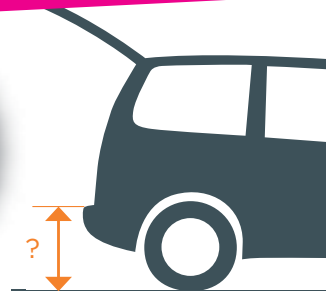
How long?

a. Measure the step height/level difference.

(Total height of steps or height to resting point on vehicle).



Remember:
"The longer the ramp, the easier the slope".

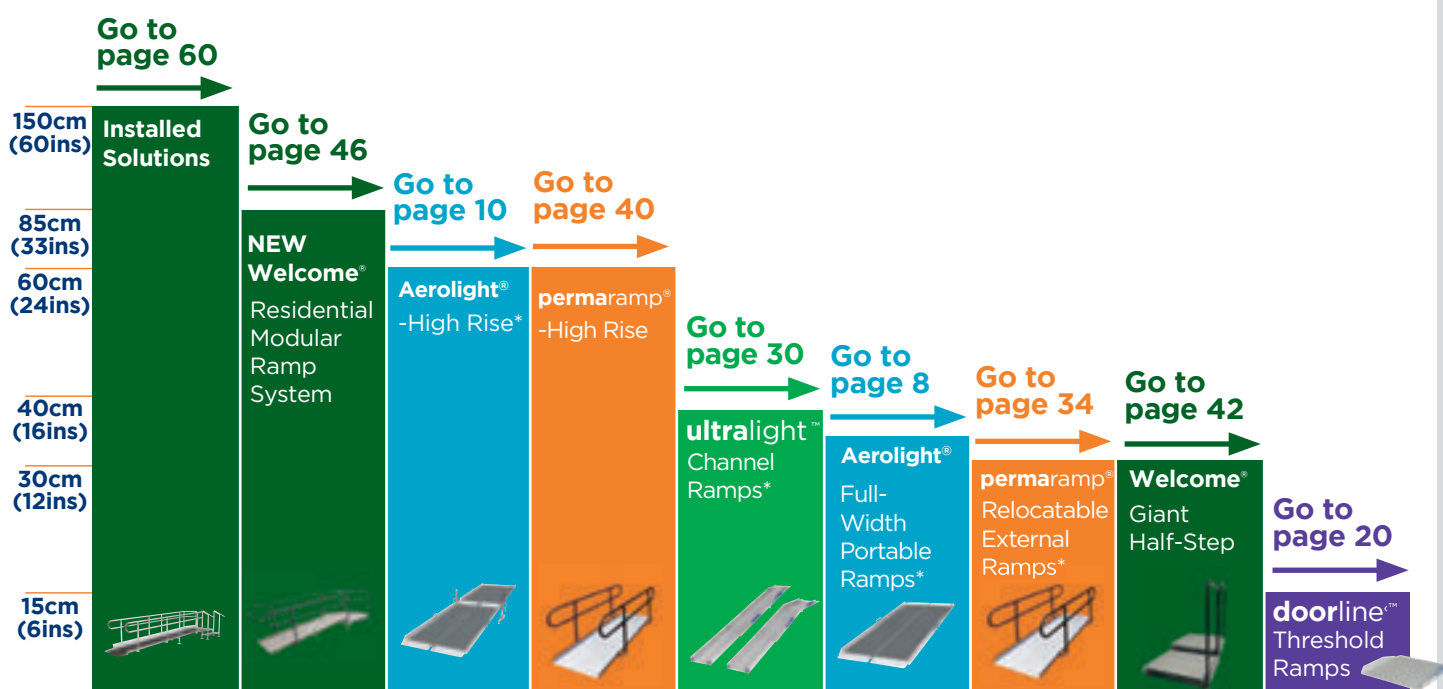


b. Use the Ramp Length Guide

Height x Gradient = Length Required

Height (up to)	Length		
	1:6	1:8	1:12
10cm (4ins)	60cm (2ft)	80cm (2ft 8ins)	120cm (4ft)
15cm (6ins)	90cm (3ft)	120cm (4ft)	180cm (6ft)
20cm (8ins)	120cm (4ft)	160cm (5ft 4ins)	240cm (8ft)
25cm (10ins)	150cm (5ft)	200cm (6ft 8ins)	300cm (10ft)
30cm (1ft)	180cm (6ft)	240cm (8ft)	360cm (12ft)
45cm (1ft 6ins)	270cm (9ft)	360cm (12ft)	540cm (18ft)
60cm (2ft)	360cm (12ft)	480cm (16ft)	720cm (24ft)

Select by height range



*Heights shown are based on 1:8 gradient.

Eureka!

Look out for these unique safety icons through the catalogue

Gripline™ technology

This unique patented safety feature is now seen on a number of our Doorline™ products, and gives improved user experience. The built-in shock absorbing qualities give a smoother ride and comfortable transition from ground to ramp!

- ▶ Gives front edge grip for extra wheel travel safety
- ▶ Anti-slip underside safely locks the ramp in place as the mobility device rides onto it
- ▶ Protects all floor finishes, even polished wood floors

Gripline™ technology



Gripdeck™ technology

Unique to Enable Access and used on Permaramp, Welcome® Ramp and Step systems and Giant Half-Step products, this special multi-directional grip surface gives extra safety and traction for mobility devices and users.

- ▶ Independently tested to last, and to provide even more grip in the wet!
- ▶ Child & pet-friendly, plus suited to all shoe and heel types
- ▶ Solid surface prevents grass and weeds 'grow-through'
- ▶ Extremely durable and washable finish

Gripdeck™ technology



Child & pet-friendly



Multi-directional grip



Suited to all heel types



Retains high grip in wet



Prevents grass & weeds 'grow-through'



Extremely durable & washable surface

What's New?



Aerolight[®]-Max

Commercial folding suitcase ramp

PAGE
16



doorline[™]-variwedge

Simple indoor/outdoor threshold solution

PAGE
25



permaramp[®]-High Rise

Reach double the height

PAGE
40



NEW Welcome[®]

Residential Modular Ramp System

PAGE
46



NEW Welcome[®]

Standalone Steps

PAGE
54



NEW Welcome[®]

Standalone Handrails

PAGE
56



METRO[®] Portable Folding Aluminium Ramp

PAGE
64



METRO[®] Adjustable Wedge Ramp

PAGE
65

What's New?

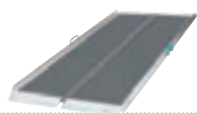
rampCENTRE[®] Aerolight[®] Full-width portable ramps

“This new product
melds very well with the
environment; it's not a
beacon for disability.”
Kate Sheehan,
Occupational Therapist



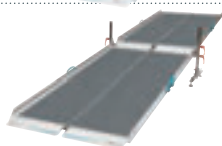
So **VERSATILE**, So **EASY-TO-USE**,
So **QUICK TO DEPLOY**, So **SAFE**,
So **STRONG**, So **LIGHTWEIGHT**!

- ▶ Subtle reflective lip feature for increased safety in low-light situations
- ▶ Great for all types of wheelchairs, rollators and scooters (2, 3, 4, 5 and 6 wheel types)
- ▶ A full-width anti-slip surface provides excellent grip
- ▶ Available in different styles and sizes to suit your needs
- ▶ Unique tapered lip design to fit narrow doorways and allow seamless transition for bridging



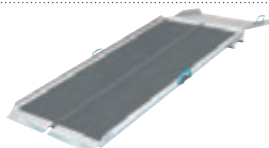
Aerolight[®]-Xtra
Premium folding suitcase ramp

9



Aerolight[®]-High Rise
Combinations for lengths up to 16ft (480cm)

10



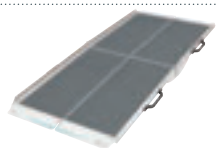
Aerolight[®]-Up&Over
Perfect for uPVC thresholds

11



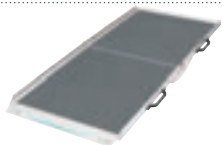
Aerolight[®]-Classic
Premium non-folding ramp

12



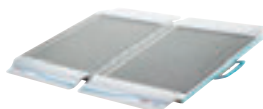
Aerolight[®]-Lifestyle
Premium multi-folding ramp

13



Aerolight[®]-Broadfold
Premium folding ramp

14



Aerolight[®]-Travel Ramp
Extremely compact and very lightweight

15



Aerolight[®]-Max
Commercial folding suitcase ramp

16



Aerolight[®]-Accessories

17

rampCENTRE[®] Aerolight[®]-Xtra

Premium folding suitcase ramp

“The fact that these ramps are the lightest on the market makes it an easier selling point all-round.”
(RampCentre Dealer)

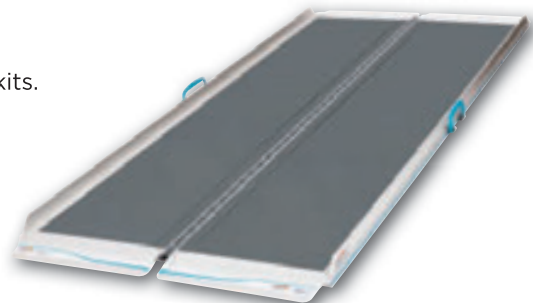
A proven and popular workhorse

Aerolight[®] - Full-width portable ramps



Quick and easy to deploy, the Aerolight[®]-Xtra is an all-round winner in real life situations. Since its introduction in 2003, the original style has seen many improvements and is now also available in High Rise and Up&Over kits.

- Folds and clips together for convenient, compact storage
- Flat underneath for the best possible step clearance
- Very easy to carry and deploy
- Full-width anti-slip surface provides excellent grip which folds inside when stored and carried for protection and safety
- Contrasting colour edge strip increases visibility



Code	Length	Capacity	Weight	Stored Dimensions L x W x D
Width: 76cm (30ins) (excluding handles). Lip width 71.4cm (28.1ins).				
AX6	60cm (2ft)	450kg (71st)	4.9kg (11lbs)	60 x 39 x 8cm (24 x 15 x 3ins)
AX9	90cm (3ft)	450kg (71st)	6.6kg (15lbs)	90 x 39 x 8cm (35 x 15 x 3ins)
AX12	120cm (4ft)	400kg (63st)	8.6kg (19lbs)	120 x 39 x 8cm (47 x 15 x 3ins)
AX15	150cm (5ft)	350kg (55st)	10.4kg (23lbs)	150 x 39 x 8cm (59 x 15 x 3ins)
AX18	180cm (6ft)	350kg (55st)	12.3kg (27lbs)	180 x 39 x 8cm (71 x 15 x 3ins)
AX21	210cm (7ft)	300kg (47st)	14.2kg (31lbs)	210 x 39 x 8cm (83 x 15 x 3ins)
AX24	240cm (8ft)	250kg (39st)	16kg (35lbs)	240 x 39 x 8cm (98 x 15 x 3ins)
High Rise Kits (See P10)	HR30	300cm (10ft)	350kg (55st)	Includes: (2 x AX15 + 1 x AJ4)
	HR36	360cm (12ft)	350kg (55st)	Includes: (2 x AX18 + 1 x AJ4)
	HR42	420cm (14ft)	300kg (47st)	Includes: (2 x AX21 + 1 x AJ4)
	HR48	480cm (16ft)	250kg (39st)	Includes: (2 x AX24 + 1 x AJ4)

rampCENTRE[®] Aerolight[®]-High Rise

Aerolight[®]-Xtra combinations up to 16ft/4.8m long

Achieve incredible lengths and heights with lightweight, portable ramps



4 sizes



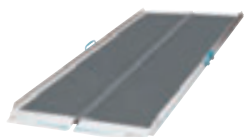
Up to 240cm (8ft) long



Up to 350kg capacity

A convenient, portable solution for multiple steps, combining the well-known benefits of the Aerolight[®]-Xtra with the ramp joining support (AJ4).

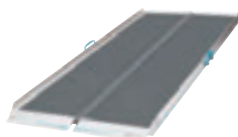
- Fully adjustable for any height and gradient
- Ramp joining support (AJ4) is also available separately



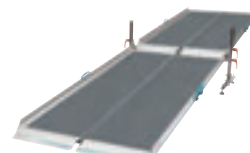
Aerolight[®]-Xtra (page 9)



AJ4 joining support



Aerolight[®]-Xtra (page 9)



Aerolight[®]-High Rise kit

Code	Includes	Length	Max Height at 1:8	Capacity
Width: 76cm (30ins) (excluding handles and joining support). Lip width 71.4cm (28.1ins)				
HR30	1 x AJ4, 2 x AX15	300cm (10ft)	37.5cm (15ins)	350kg (55st)
HR36	1 x AJ4, 2 x AX18	360cm (12ft)	45cm (18ins)	350kg (55st)
HR42	1 x AJ4, 2 x AX21	420cm (14ft)	52.5cm (21ins)	300kg (47st)
HR48	1 x AJ4, 2 x AX24	480cm (16ft)	60cm (24ins)	250kg (39st)

Code	Description	Height	Capacity	Weight
AJ4	Joining Support: includes easy-use handle fixings for height adjustment. Can be used with any Aerolight [®] ramps.	11-45cm (4-18ins)	350kg (55st)	4.7kg (10lbs)

rampCENTRE® Aerolight®-Up&Over

Aerolight®-Xtra and threshold ramp combinations

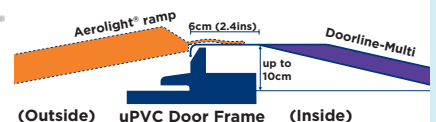
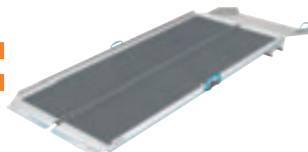
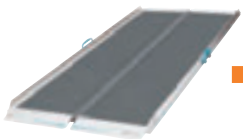
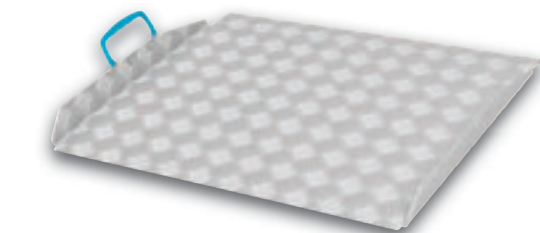
The complete up-and-over solution for thresholds – great for uPVC thresholds

Aerolight® - Full-width portable ramps



The Aerolight®-Up&Over combines the versatile Aerolight®-Xtra with the innovative Doorline-Multi (DM5), providing everything needed for access up to and over the threshold.

- ▶ Versatile, quick and easy to deploy
- ▶ Solves most threshold types and heights
- ▶ Portable and easy to store
- ▶ Seamless transition right over the threshold



Aerolight®-Xtra (page 9)

Doorline-Multi (page 21)

Aerolight®-Up&Over kit

Code	Includes	External Ramp Length	Max Height at 1:8	Max. Recommended Internal Threshold Height	Capacity
U012	1 x DM5, 1 x AX12	120cm (4ft)	15cm (6ins)	10cm (4ins)	300kg (47st)
U015	1 x DM5, 1 x AX15	150cm (5ft)	19cm (7.5ins)	10cm (4ins)	300kg (47st)
U018	1 x DM5, 1 x AX18	180cm (6ft)	23cm (9ins)	10cm (4ins)	300kg (47st)
U021	1 x DM5, 1 x AX21	210cm (7ft)	26cm (10ins)	10cm (4ins)	300kg (47st)
U024	1 x DM5, 1 x AX24	240cm (8ft)	30cm (11.8ins)	10cm (4ins)	250kg (39st)

For full product dimensions see individual component pages.

rampCENTRE® Aerolight®-Classic

Premium non-folding ramp

“It's very lightweight which means it can be taken up and stored away very easily, creating a very normal environment.”
Kate Sheehan, Occupational Therapist

So easy - simply
place and use!



The Aerolight®-Classic is available in shorter lengths where the convenience of a folding product may not be needed.

- Great portable solution for thresholds, kerbs and steps
- Well suited for public access
- Extremely stable; perfect for ambulant users



Code	Length	Capacity	Weight
Width: 76cm (30ins) (excluding handles). Lip width 71.4cm (28.1ins).			
AC6	60cm (2ft)	400kg (63st)	4.3kg (9lbs)
AC9	90cm (3ft)	350kg (55st)	5.6kg (12lbs)
AC12	120cm (4ft)	350kg (55st)	7.1kg (16lbs)
AC15	150cm (5ft)	350kg (55st)	8.5kg (19lbs)

rampCENTRE® Aerolight®-Lifestyle

Premium multi-folding ramp

“This will be your one-stop-shop of a ramp.”
Kate Sheehan,
Occupational Therapist

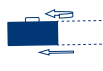
Full-width safety and easy handling; great for out-and-about access and home use!



Safety hinges



Underside of ramp: halves lock together when in position



4 sizes



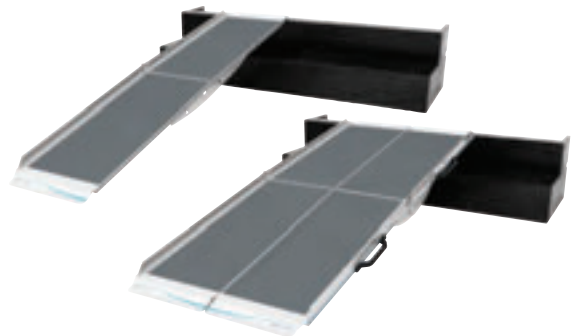
Up to 270cm
(9ft) long



Up to 350kg
capacity

The innovative Aerolight®-Lifestyle leads the pack in full-width scooter ramps. This unique ramp's two halves make it very light to carry and easy to store, yet so strong it can take a loaded scooter too!

- ▶ Safety hinges with pinch protection
- ▶ Highest strength-to-weight ratio scooter ramp available
- ▶ Two halves make it very light to carry and easy to store
- ▶ Easy vehicle loading



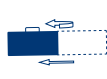
Code	Length	Capacity	Weight (Each Half)	Stored Dimensions L x W x D
Width: 74cm (29ins) (excluding handles). Lip width 69.6cm (27.4ins).				
AL18	180cm (6ft)	350kg (55st)	7.8kg (17lbs)	95 x 37 x 25cm (37 x 15 x 10ins)
AL21	210cm (7ft)	300kg (47st)	8.8kg (19lbs)	110 x 37 x 25cm (43 x 15 x 10ins)
AL24	240cm (8ft)	250kg (39st)	9.8kg (22lbs)	125 x 37 x 25cm (49 x 15 x 10ins)
AL27	270cm (9ft)	250kg (39st)	10.9kg (24lbs)	140 x 37 x 25cm (55 x 15 x 10ins)

rampCENTRE® Aerolight®-Broadfold

Premium folding ramp

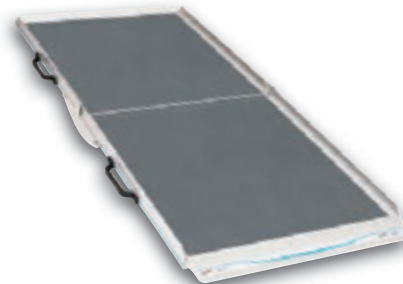
“The fact that you can approach it from different angles rather than just always having to go straight on means that it will be very useful in tight situations.”
Thom, Wheelchair User

Quick, easy and safe to deploy; great for vehicle access



A simple and effective scooter ramp, the Aerolight®-Broadfold folds to half-length for compact storage.

- Now with 4 rigid handles for safety and ease-of-use
- Easy vehicle loading - superb solution for taxi and minibus ramp applications
- Highest capacity broadfold ramp on the market
- So easy to deploy!
- Full-width lip locates firmly into vehicle



Code	Length	Capacity	Weight	Stored Dimensions L x W x D
Width: 76cm (30ins) (excluding handles). Lip width 71.4cm (28.1ins).				
AB15	150cm (5ft)	350kg (55st)	12.1kg (27lbs)	80 x 19 x 76cm (31 x 7 x 30ins)
AB18	180cm (6ft)	350kg (55st)	13.5kg (30lbs)	95 x 19 x 76cm (37 x 7 x 30ins)
AB21	210cm (7ft)	300kg (47st)	14.9kg (33lbs)	110 x 19 x 76cm (43 x 7 x 30ins)
AB24	240cm (8ft)	250kg (39st)	16.4kg (36lbs)	125 x 19 x 76cm (49 x 7 x 30ins)

rampCENTRE[®] Aerolight[®] - Travel Ramp

Extremely compact and lightweight

A simple and ready-to-go solution



60cm (2ft) long

Up to 350kg capacity

The Aerolight-Travel Ramp is your quick and easy-to-use answer to out-and-about access.

- Just right for kerbs and steps
- Handy carry bag to fit on the back of the wheelchair or scooter
- Great for any mobility device
- Full-width anti-slip surface for safety

Brilliant for those out and about

SO COMPACT!

Code	Length	Weight	Capacity
Width: 77cm (30ins) (excluding handles). Lip width 71.4cm (28.1ins).			
AXT	60cm (2ft)	4.5kg (10lbs) (excluding bag)	350kg (55st)

rampCENTRE[®] Aerolight[®]-Max

Commercial folding suitcase ramp

NEW

A rugged, multi-purpose version of the well proven Aerolight[®]-Xtra



Super strong handles



Surface grip and high contrast colours



Custom sizes available



7 sizes



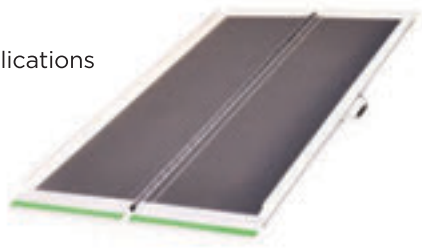
Up to 240cm (8ft) long



Up to 475kg capacity

Aerolight[®]-Max, an extra-tough version of the long-proven Aerolight-Xtra

- Designed and built in Britain for constant use in commercial and public access applications
- Even tougher ramp surface, well suited to trolley and flight case wheels if required
- High capacity construction to carry more substantial loads
- Utilises highly contrasting green and black colours for extra safety and visibility
- Other built-in benefits include extra ramp width and super-strong handles



Code	Length	Capacity	Weight	Stored Dimensions L x W x D
Width: 79cm (31ins) (excluding handles)				
AXM06	60cm (2ft)	475kg (75st)	6.4kg (14.1lbs)	60 x 40.5 x 8cm (24 x 15.9 x 3ins)
AXM09	90cm (3ft)	475kg (75st)	8.5kg (18.7lbs)	90 x 40.5 x 8cm (35 x 15.9 x 3ins)
AXM12	120cm (4ft)	425kg (67st)	10.6kg (23.3lbs)	120 x 40.5 x 8cm (47 x 15.9 x 3ins)
AXM15	150cm (5ft)	375kg (59st)	12.7kg (27.9lbs)	150 x 40.5 x 8cm (59 x 15.9 x 3ins)
AXM18	180cm (6ft)	375kg (59st)	14.8kg (32.6lbs)	180 x 40.5 x 8cm (71 x 15.9 x 3ins)
AXM21	210cm (7ft)	325kg (51st)	16.9kg (37.2lbs)	210 x 40.5 x 8cm (83 x 15.9 x 3ins)
AXM24	240cm (8ft)	275kg (43st)	19kg (41.8lbs)	240 x 40.5 x 8cm (98 x 15.9 x 3ins)

rampCENTRE® Aerolight® - Accessories



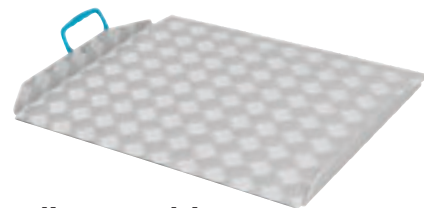
**Aerolight®
Wall Strap**
Kit Code: AWK
Quick-fit strap holds any Aerolight® ramp vertically against wall for tidy storage



**Aerolight®
Joining Support**
Code: AJ4
Use to join 2 Aerolight ramps together (see page 10)



**Aerolight® Ramp Locating
Peg Kit Code: ARLS**
Can be fitted to any Aerolight® ramp to securely locate on upper step or in vehicle, etc. Kit includes two studs, drill bit and fixings. Underside of lip shown with locating studs.



Doorline™-Multi
Code: DM5, DM7

Combine with the Aerolight ramps to access up to, over the threshold and into the building. (More information on page 21)



Aerolight®-Connect Platform

For use with Aerolight ramps – excellent for events, up to 42cm (16.5ins) high

CP12 Aerolight-Connect platform 122 x 122cm c/w safety kerbs, doorplate, adjustable legs and rubber feet (no handrails)
CPHK Single handrail kit for CP12

Step Accessories - see page 54 Step Kits for Welcome® platforms

Additional Height Accessories - see page 52



Aerolight® Upright Storage Bracket Kit
Code: ASBV

Compact vertical storage for Aerolight-Xtra ramps. Comes with locking top section for extra security. (Max. 180cm ramp). Key provided



Aerolight® Horizontal Storage Bracket Kit - Code: ASB

Easy, ergonomic storage for Aerolight®-Classic and Xtra ramps (Padlock and key provided)

Utilityramp™ Industrial/Commercial Portable Ramp

Rugged, yet easy-to-use and portable



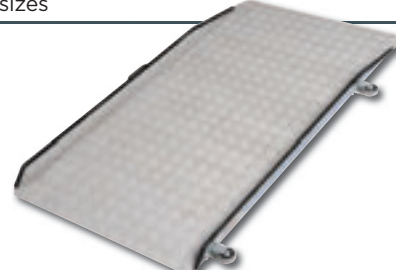
12 sizes



Up to 240cm (8ft) long



Up to 400kg capacity



- Great for mobility access or industrial use
- Unique Gripdeck™ highly anti-slip surface retains grip even when wet
- Up to 400kg weight capacity
- Standard 76cm wide or Superwide 90cm wide versions available

Code	Length	Capacity	Weight
Width: 76cm (30ins)			
UR9*	90cm (3ft)	400kg (63st)	9kg (20lbs)
UR12*	120cm (4ft)	400kg (63st)	12.5kg (28lbs)
UR15	150cm (5ft)	400kg (63st)	15.5kg (34lbs)
UR18	180cm (6ft)	400kg (63st)	19kg (42lbs)
UR21	210cm (7ft)	350kg (55st)	22.5kg (50lbs)
UR24	240cm (8ft)	300kg (47st)	25.5kg (56lbs)

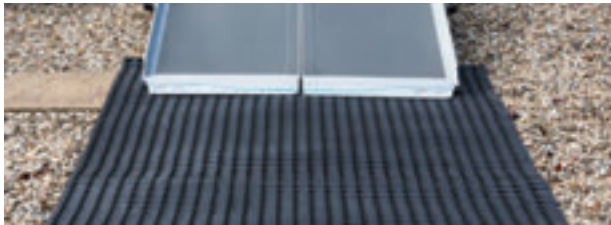
* No wheels. Kerb Height 7cm (3ins)

Code	Length	Capacity	Weight
Width: 90cm (35ins)			
URW9*	90cm (3ft)	400kg (63st)	10.5kg (23lbs)
URW12*	120cm (4ft)	400kg (63st)	14.5kg (32lbs)
URW15	150cm (5ft)	400kg (63st)	18.5kg (41lbs)
URW18	180cm (6ft)	400kg (63st)	22kg (49lbs)
URW21	210cm (7ft)	350kg (55st)	26kg (57lbs)
URW24	240cm (8ft)	300kg (47st)	30kg (66lbs)

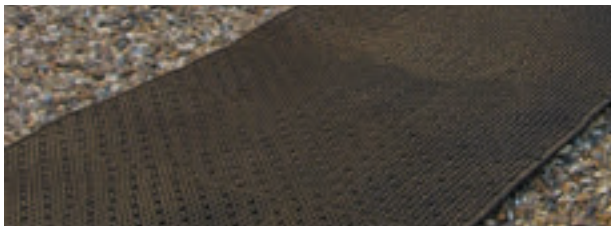
rampCENTRE® Rollout-Trackway™

Saves expensive or invasive construction work and can be easily cleaned, rolled up and stored.
Can be trimmed to length or to fit around steps, flower beds, downpipes, etc.

- Great for events and short-term uses, and can be left in place for long-term use
- Totally weather-resistant with full drainage - perfect for the unpredictable British weather!
- Extremely durable, and can cover grass, gravel and cobbles etc
- Four practical sizes means multiple pieces can be used for larger areas



Rollout-Trackway™ 150cm
150cm (4ft 11ins)



Rollout-Trackway™ 250cm
250cm (8ft 2ins)



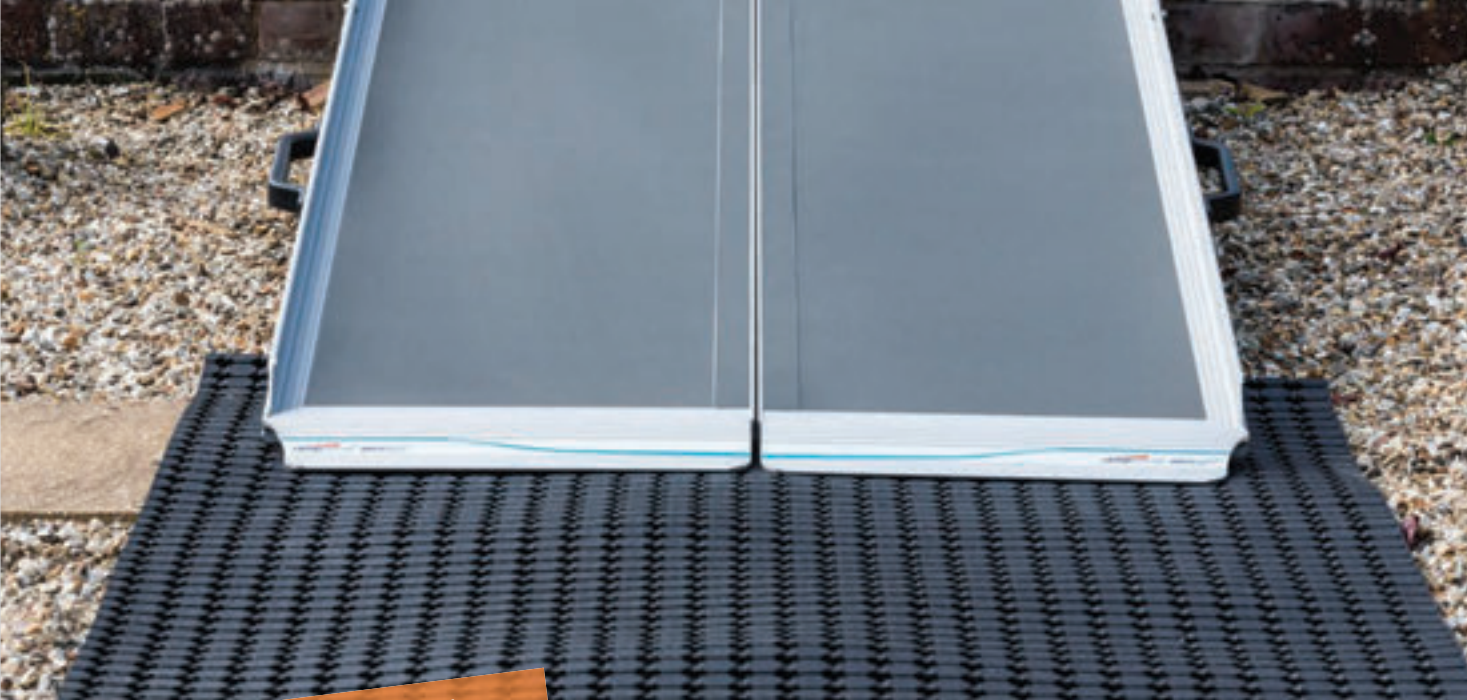
Rollout-Trackway™ 500cm
500cm (16ft 5ins)



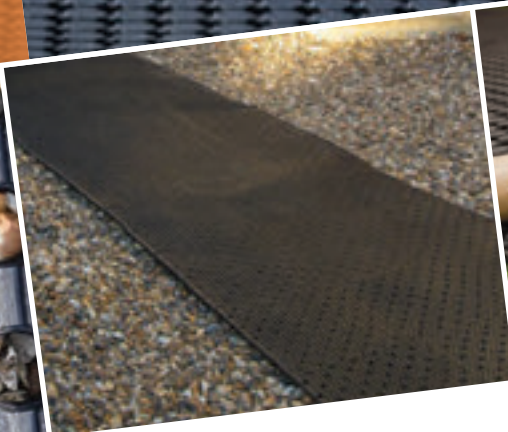
Rollout-Trackway Patio™
2 x 1.8m (6ft 7ins x 5ft 10ins)



Rollout-Trackway™ Pegs



Instant access solution
for grass, gravel, and
other uneven surfaces



- Extremely durable, and can cover grass, gravel and cobbles, etc
- Four practical sizes means multiple pieces can be used for larger areas
- Completes your access route

Rollout-Trackway™

Code	Length	Weight
Width: 90cm (35.4ins)		
RT15	150cm (4ft 11ins)	12kg (26lbs)
RT25	250cm (8ft 2ins)	20kg (44lbs)
RT50	500cm (16ft 5ins)	40kg (88lbs)

Rollout-Trackway Patio™

Code	Size	Weight
RTP20	2m x 1.8m (6ft 7ins x 5ft 11ins)	32kg (71lbs)

Rollout-Trackway™ Pegs

- Heavy duty pegs for safely securing Rollout Trackway
- Convenient pack of 12



Code	Height	Width
RTPEG	20cm (8ins)	2.5cm (1ins)

NEW

rampCENTRE[®] doorlineTM

Threshold ramps

Whatever the threshold, the Doorline range can cope

Huge range • **Adjustable options** • **Easy-to-use** • **Excellent finish**

- Great for overcoming door thresholds
- Very simple to deploy
- Can be used both sides of a door
- Removable and leave-in-place solutions available



doorlineTM-multi

Multiple-use uPVC door threshold ramps

21



The Butterfly RampTM

Everyone's threshold bridge solution

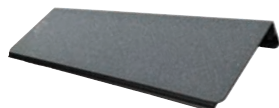
22



doorlineTM-threshold wedge

Simple indoor/outdoor threshold solution

24



doorlineTM-variwedge

Adjustable-height aluminium wedge ramps

25



doorlineTM-bridge

Full-width bridge ramps

26



doorlineTM-neatedge

Versatile rubber wedge ramps

27



doorlineTM-neatslope

Low-height, flexible wedge ramps

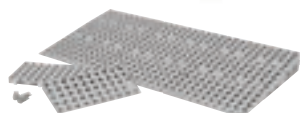
28



doorlineTM-custom

Bespoke aluminium threshold ramps

29



Build-a-SlopeTM

Modular threshold ramp kits

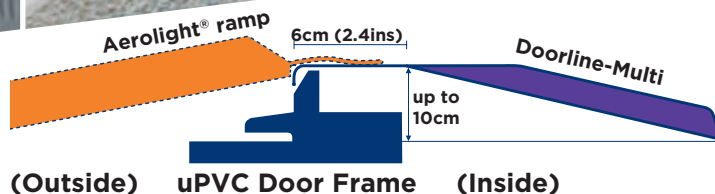
29

rampCENTRE[®] doorline[™] - multi

Designed to overcome
uPVC door thresholds

DM5 (in use with
Welcome[®] System)

DM5 (in use with
Aerolight[®])



uPVC door threshold problems can easily be beaten with the innovative Doorline[™]-Multi. Available in two sizes, this unique product hooks securely on the threshold whilst spreading the weight and creating a strong edge nosing for any Aerolight[®] ramp needed for access from the outside. The result is a comfortable route all the way to the inside of the property.



Your benefits:

- Unique lip design with rubber anti-slip to safely eliminate threshold damage
- Designed for use with our Aerolight[®] and Ultralight[™] ramps to easily bridge any threshold
- Anodised finish for many years of service
- Extremely lightweight for quick and easy use, with full 300kg capacity
- Comfortable, foldaway, rattle-free handle

**UNIQUE
DESIGN**



Registered Design

Key Product Information

Code	Max Recom. Height	Length	Capacity	Weight
Width: 70cm (27.6ins)				
DM5	10cm (3.9ins)	56cm (22ins)	300kg (47st)	3.6kg (7.8lbs)
DM7	13cm (5.1ins)	74cm (29ins)	300kg (47st)	4.7kg (10.4lbs)



Underside of ramp

Unique lip design with anti-slip strip securely locates on the threshold and protects the door frame

rampCENTRE® The Butterfly Ramp®

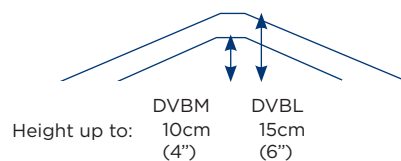
Everyone's threshold
bridge solution



This unique and patented bridge ramp automatically adjusts as it is placed, and suits all threshold types, with no user adjustment required.

Your benefits:

- So fast and easy to use and perfect for any mobility device
- Low profile design for a shallow and safe gradient
- Two convenient sizes to cover thresholds of up to 6" (15cm) high
- All-weather full-width anti-slip surface folds inside when carrying for extra safety, with integral comfort carrying handles
- Registered designs and patents granted



Code	Height Range		Overall Length	Capacity	Weight	Stored Dimensions L x H x D
	From	To				
Width: 70cm (28ins)						
DVBM	0cm	10cm (4ins)	90cm (36ins)	350kg (55st)	6.8kg (15lbs)	70 x 48 x 4cm (28 x 19 x 1.5ins)
DVBL	0cm	15cm (6ins)	120cm (48ins)	300kg (47st)	9.1kg (20lbs)	70 x 63 x 4cm (28 x 25 x 1.5ins)

SO COMPACT!

Built-in doorframe protection



Gripline™ floor grip and protection on both ends of the ramp removes the risk of movement while in use

Simply place, open and use in seconds!



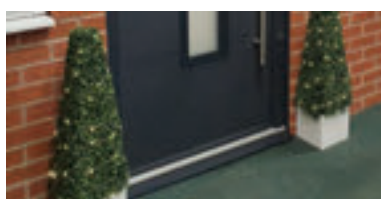
Ideal for any door or threshold type



Sliding/patio door



Wood threshold



Composite door



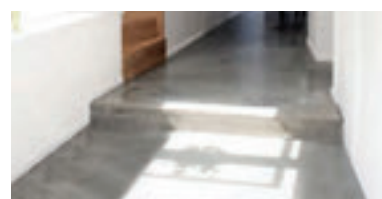
French doors



uPVC threshold



Stone threshold



Internal threshold

doorline™ - versatile threshold ramps

rampCENTRE[®] doorline™ - threshold wedge

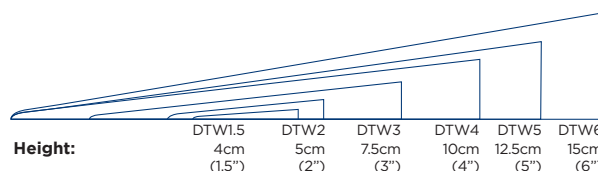
Simple indoor and outdoor threshold solution



Easily fixed in place for extra security

Your benefits:

- 6 popular sizes immediately available from stock
- Superb alternative to fibreglass wedge ramps
- Fully sanitisable and washable with pressure and heat
- Unique, robust and lighter weight design
- Excellent all-weather grip surface



Code	Height	Length	Capacity	Weight
Width: 74cm (29ins)				
DTW1.5	4cm (1.5ins)	20cm (7.8ins)	350kg (55st)	1.7kg (3.7lbs)
DTW2	5cm (2ins)	27cm (10.6ins)	350kg (55st)	2.3kg (5lbs)
DTW3	7.5cm (3ins)	40cm (15.7ins)	350kg (55st)	4.5kg (10lbs)
DTW4	10cm (4ins)	50cm (19.7ins)	350kg (55st)	5.5kg (12lbs)
DTW5	12.5cm (5ins)	70cm (27.6ins)	350kg (55st)	7.3kg (16lbs)
DTW6	15cm (6ins)	90cm (35.4ins)	350kg (55st)	9.2kg (20.2lbs)

rampCENTRE[®] doorline™ - variwedge



NEW

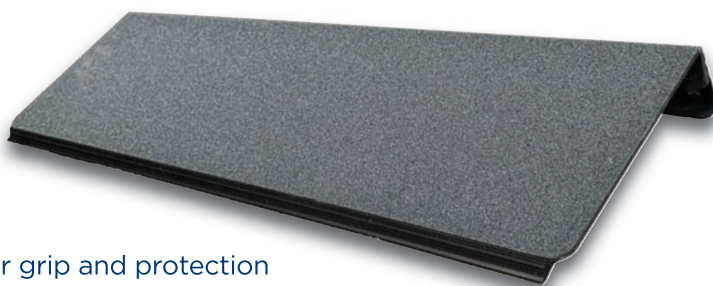
Adjust height for any threshold up to 15cm (6")



Up to 350kg capacity



This adjustable-height wedge ramp will overcome almost any threshold! Leave in place for ultimate ease of use. 4 sizes: Small, Medium, Large and Extra-Large.



Your benefits:

- ▶ Gripline™ floor grip and protection removes risk of movement while in use
- ▶ Match threshold height to within the thickness of a coin (adjusts in 5mm increments)
- ▶ Remove and readjust for re-use elsewhere
- ▶ Indoor or outdoor use
- ▶ Well-suited for indoor and outdoor use with extremely durable anodised finish
- ▶ Can be fixed in place for maximum stability and security



Assemble or adjust for re-use in less than a minute!



Easily fixed in place



No protruding legs to obstruct door swing

2 - 3cm



DVWS - Small

3.5 - 5.5cm



DVWM - Medium

6 - 10cm



DVWL - Large

10.5 - 15cm



DVWXL - Extra-Large

Key Product Information

Code	Min Height	Max Height	Length	Capacity	Weight
Width: 74cm (29.1ins)					
DVWS	2cm (0.8ins)	3cm (1.2ins)	15cm (5.9ins)	350kg (55st)	1.5kg (3.3lbs)
DVWM	3.5cm (1.4ins)	5.5cm (2.2ins)	25cm (9.8ins)	350kg (55st)	2.5kg (5.5lbs)
DVWL	6cm (2.4ins)	10cm (3.9ins)	50cm (19.7ins)	350kg (55st)	5.3kg (11.7lbs)
DVWXL	10.5cm (4.1ins)	15cm (5.9ins)	70cm (27.6ins)	350kg (55st)	7.2kg (15.8lbs)

rampCENTRE® doorline™ - bridge

Bridge awkward thresholds

Unique safety/
comfort carrying
holes



Highly presentable and very practical, these bridge ramps are perfect for overcoming awkward thresholds - internal or external. Choose from 4 useful sizes.

**WIDE
RANGE OF
SIZES**

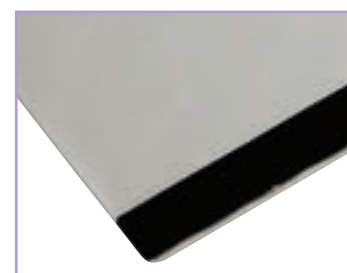
Your benefits:

- Unmatched level of finish to prevent stains and corrosion, and provide years of use
- Unique comfortable carrying with safety/comfort eyelets on the finger holes
- Rubber strips to prevent slipping and protect floors
- Excellent grip surface
- Extremely lightweight and very quick to deploy

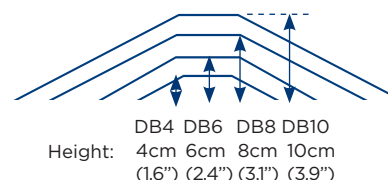
Key Product Information

Code	Height	Length	Capacity*	Weight
Width: 70cm (27.6ins)				
DB4	4cm (1.6ins)	48cm (18.9ins)	300kg (47st)	3kg (6.6lbs)
DB6	6cm (2.4ins)	56cm (22ins)	300kg (47st)	3.5kg (7.7lbs)
DB8	8cm (3.1ins)	72cm (28.3ins)	300kg (47st)	5.4kg (11.9lbs)
DB10	10cm (3.9ins)	97cm (38.2ins)	300kg (47st)	7.6kg (16.8lbs)

*Capacity assumes ramp rests on threshold



Rubber strips to prevent slipping and protect floor



rampCENTRE[®] doorline™ - neatedge

Unobtrusive, strong
and versatile rubber
wedge ramps



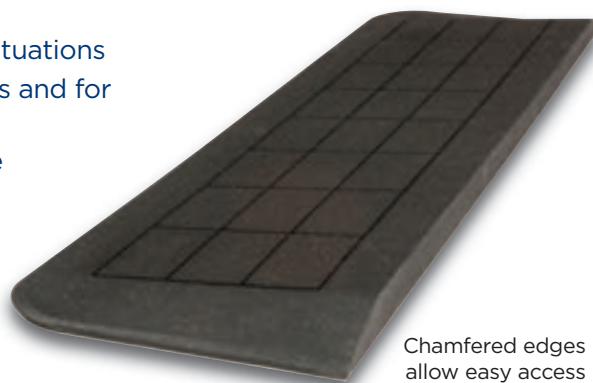
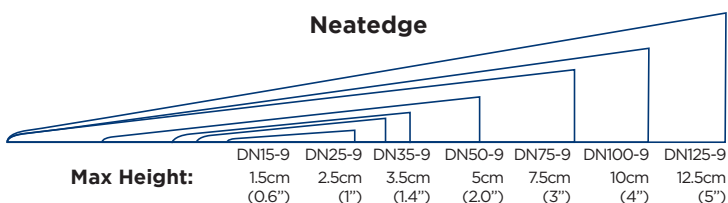
Up to 500kg
capacity



Doorline™-Neatedge ramps are manufactured from weather-resistant rubber and their massive loading capacity lends itself to numerous uses. This range is specifically produced to a variety of practical heights and can be easily trimmed, cut or joined with DNF adhesive (see below).

Your benefits:

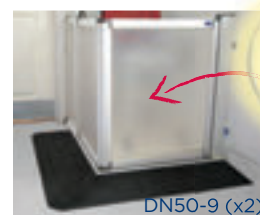
- Extremely versatile - can be used in a huge number of situations
- Soft surface great for use in schools, care/nursing homes and for shower trays/washroom pods
- Incredible weight capacity - well suited for industrial use
- Doormat-like appearance blends in well
- Permanent fixing kit option



Key Product Information

Code	Height	Length	Capacity	Weight
Width: 90cm (35ins)				
DN15-9	1.5cm (0.6ins)	12cm (4.5ins)	500kg (79st)	1.4kg (3lbs)
DN25-9	2.5cm (1ins)	20cm (8ins)	500kg (79st)	3.1kg (6.8lbs)
DN35-9	3.5cm (1.4ins)	28cm (11ins)	500kg (79st)	5.9kg (13lbs)
DN50-9	5cm (2ins)	40cm (16ins)	500kg (79st)	11kg (24.3lbs)
DN75-9	7.5cm (3ins)	60cm (24ins)	500kg (79st)	18kg (39.7lbs)
DN100-9	10cm (4ins)	80cm (31.5ins)	500kg (79st)	31kg (68.3lbs)
DN125-9	12.5cm (5ins)	100cm (39.4ins)	500kg (79st)	51kg (112.4lbs)
DNF	Adhesive for permanent fixing (290ml), including application gun			

Can be trimmed or cut to size as required.



Ideal for
showers
or wet
rooms

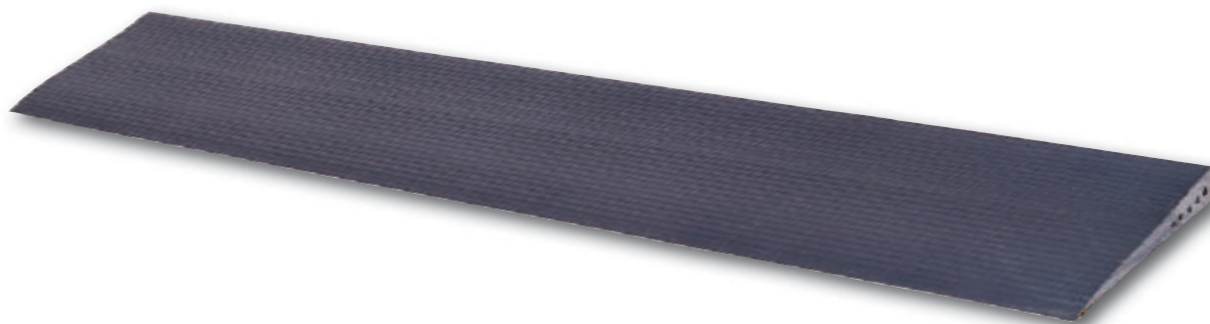
rampCENTRE[®] doorline™ - neatslope

Eliminate low threshold trip hazards!



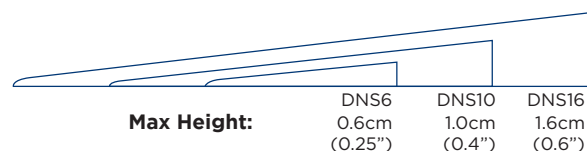
Up to 350kg
capacity

This versatile product is the simple answer to those small internal level changes such as tiles or threshold strips.



Your benefits:

- Available in 3 useful heights
- Easy to trim if required
- Available with or without self-adhesive backing



Key Product Information

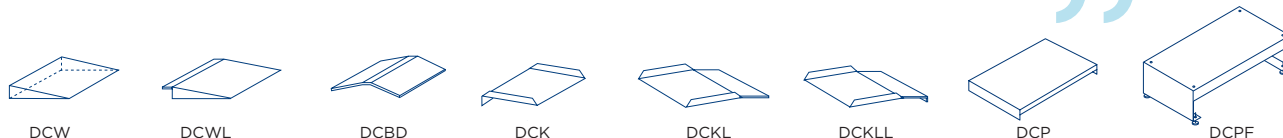
Code	Height	Length	Capacity	Weight	Self Adhesive Y/N
Width: 90cm (35.4ins)					
DNS6	0.6cm (0.25ins)	6cm (2.4ins)	350kg (55st)	0.3kg (0.7lbs)	N
DNS10	1cm (0.4ins)	10cm (3.9ins)	350kg (55st)	0.75kg (1.7lbs)	N
DNS16	1.6cm (0.6ins)	15cm (5.9ins)	350kg (55st)	1kg (2.2lbs)	N
DNS6A	0.6cm (0.25ins)	6cm (2.4ins)	350kg (55st)	0.3kg (0.7lbs)	Y
DNS10A	1cm (0.4ins)	10cm (3.9ins)	350kg (55st)	0.75kg (1.7lbs)	Y
DNS16A	1.6cm (0.6ins)	15cm (5.9ins)	350kg (55st)	1kg (2.2lbs)	Y

Optional self-adhesive backing (underneath ramp)



rampCENTRE[®] doorline[™] - custom

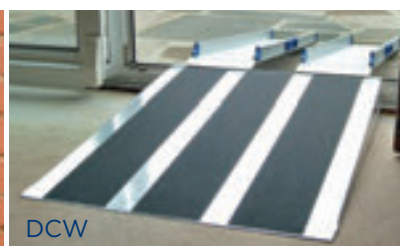
“Specially made to your specifications”



These ramps are individually manufactured to your specified sizes. Choose from 8 styles for the very few applications our stock products cannot solve.

Your benefits:

- ▶ No installation required
- ▶ Full 300kg (47st) capacity
- ▶ Excellent all-weather grip surface
- ▶ Aluminium 'never-rust' construction



rampCENTRE[®] Build-a-Slope[™]

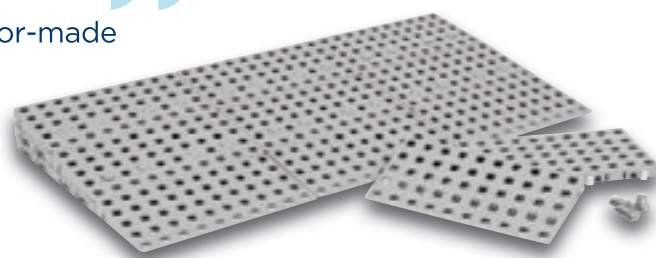


“Totally modular threshold ramp”

These modular kits make it possible to build a tailor-made ramp for your threshold.

Your benefits:

- ▶ Easily configured for any application
- ▶ Totally weatherproof
- ▶ Quick to assemble and install
- ▶ Choose from 4 popular kits
- ▶ Other sizes and special pieces are also available
- ▶ Compatible with other brands



Key Product Information

Code	Min. Height	Max. Height	Length	Capacity	Weight
Width: 75cm (29.5ins)					
BSK1	1.8cm (0.7ins)	5.5cm (2.2ins)	25cm (10ins)	450kg (71st)	0.85kg (1.9lbs)
BSK2	3.6cm (1.4ins)	9.1cm (3.6ins)	50cm (20ins)	450kg (71st)	3.4kg (7.5lbs)
BSK3	7.2cm (2.8ins)	12.7cm (5ins)	75cm (30ins)	450kg (71st)	7.6kg (16.8lbs)
BSK4	10.8cm (4.3ins)	16.3cm (6.4ins)	100cm (39ins)	450kg (71st)	13.5kg (29.8lbs)



rampCENTRE[®] ultralight[™] Channel ramps



Exceptionally well crafted in anodised aluminium, the Ultralight original perforated channel ramps offer an outstanding combination of compact storage and ease of use.

Anodised for durability • Unique built-in grip surface • Foldaway handles

- Ideal for narrow doorways
- Commonly used for residential and vehicle access
- Great for standard wheelchairs and four-wheel scooters

- Very compact for storage
- Extremely portable
- Excellent for cross-slopes



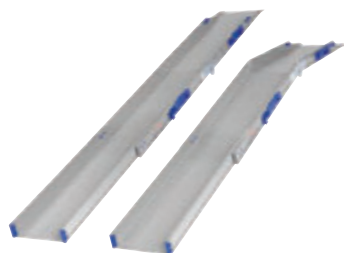
ultralight[™]-folding
Lightweight folding channel ramps

31



ultralight[™]-telescopic
Lightweight telescopic channel ramps

32



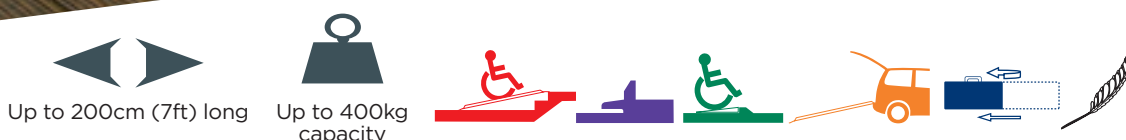
ultralight[™]-combi
Lightweight combined telescopic
and folding channel ramps

33

rampCENTRE[®] ultralight[™] - folding



PF11



Choose from a range of 4 sizes for a quick and easy-to-deploy problem solver



Ultra-strong steel hinge



Your benefits:

- Can be used to bridge thresholds
- Ramp folds in half for compact storage
- Low kerbs and long bevel sides greatly increase clearance for scooters and power chairs

Also available in a low profile version, great for smaller/lower ground clearance scooters. **(PFE20)**

Key Product Information

Code (Pair)	Length	Capacity (Pair)	Weight (Each Half)	Stored Dimensions L x W x D
Width (Internal Channel): 21cm (8ins) Kerb Height: 5cm (2ins)				
PF11	110cm (3ft 7ins)	400kg (63st)	3.6kg (8lbs)	55 x 24.5 x 13cm (22 x 10 x 5ins)
PF15	150cm (4ft 11ins)	400kg (63st)	4.6kg (11lbs)	77 x 24.5 x 13cm (30 x 10 x 5ins)
PF20	200cm (6ft 7ins)	350kg (55st)	6kg (14lbs)	102 x 24.5 x 13cm (40 x 10 x 5ins)
Width (Internal Channel): 18cm (7ins) Kerb Height: 3.5cm (1.4ins)				
PFE20	200cm (6ft 7ins)	300kg (47st)	5.8kg (12.8lbs)	104cm x 22.5cm x 10cm (41 x 9 x 4ins)

ultralight[™] - compact lightweight channel ramps

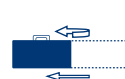
rampCENTRE[®] ultralight™ - telescopic



Up to 288cm (9ft) long



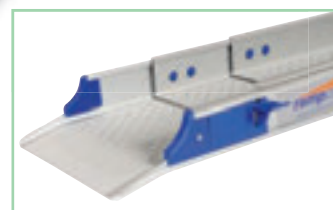
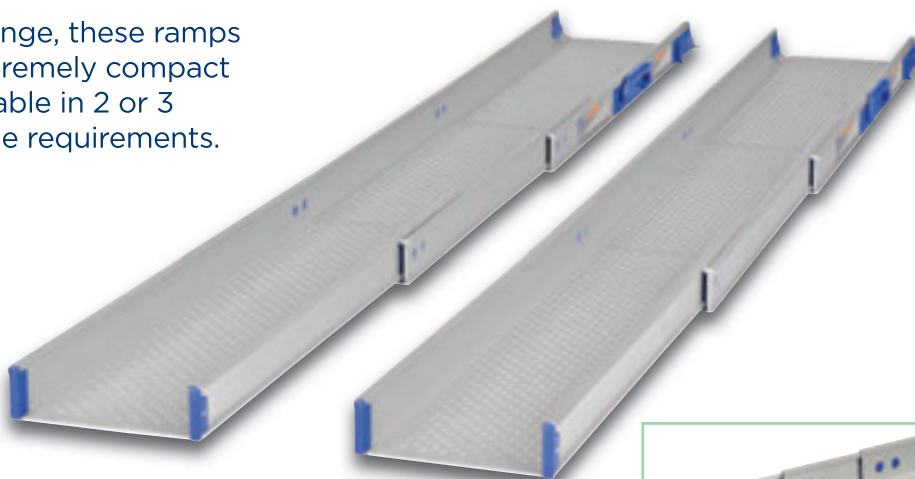
Up to 400kg capacity



The most adjustable ramp in the range, these ramps extend up to nearly 3m, yet are extremely compact for easy storage in a vehicle. Available in 2 or 3 section versions to suit your storage requirements.



PT20-2



Your benefits:

- ▶ Versatile ramps that can be used at any length, even partly extended
- ▶ Extremely compact storage
- ▶ Ideal for vehicle access
- ▶ Uniquely high capacity and generous channel widths
- ▶ The two halves can be used at different lengths from each other - great for cross-slopes!

Silent telescopic mechanism with neat safety clip to prevent opening when stored

Key Product Information

Code (Pair)	Length		Capacity (Pair)	Weight (Each Half)	Stored Dimensions L x W x D
	Max	Min			
Width (Internal Channel): 19cm (8ins) Kerb Height: 5cm (2ins)					
PT12-2	120cm (3ft 11ins)	75cm (2ft 5ins)	400kg (63st)	3.6kg (8lbs)	75 x 24.5 x 6cm (29 x 10 x 2ins)
PT20-2	202cm (6ft 8ins)	117cm (3ft 10ins)	350kg (55st)	5.8kg (13lbs)	117 x 24.5 x 6cm (46 x 10 x 2ins)
Width (Internal Channel): 18cm (7ins) Kerb Height: 5cm (2ins)					
PT20-3	199cm (6ft 6ins)	87cm (2ft 10ins)	350kg (55st)	6.1kg (14lbs)	87 x 24.5 x 7cm (31 x 10 x 3ins)
PT29-3	288cm (9ft 5ins)	117cm (3ft 10ins)	300kg (47st)	8.2kg (18lbs)	117 x 24.5 x 7cm (46 x 10 x 3ins)

3 Section

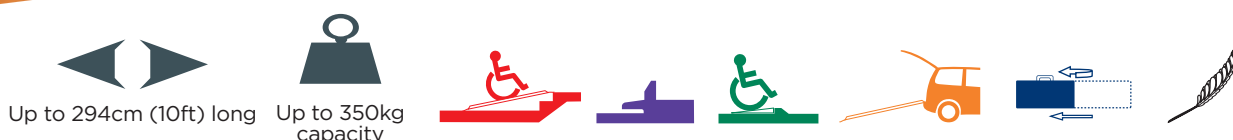
rampCENTRE[®] ultralight™ -combi

PC21-3



Amazing versatility
for straight or
up-and-over use

PC28-3



This unique product is both folding and telescopic, making it one of the most versatile ramps on the market. Also available in an even wider channel option.



PCW28-3

Your benefits:

- Low kerbs and long bevel sides greatly increase clearance for scooters and power chairs
- Wide channels as standard, with extra-width options for larger mobility devices (see PCW codes)
- Good choice for bridging a threshold with unequal levels each side
- Seriously lightweight, and incredibly compact for storage and stowing in a vehicle
- One solution for many applications



Low kerbs and long bevel sides greatly increase clearance for scooters and power chairs

Key Product Information

Code (Pair)	Length				Capacity (Pair)	Weight (Each Half)	Stored Dimensions L x W x D
	Max	Min	Telescopic Section	Hinged Section			
Width (Internal Channel): 19cm (8ins) Kerb Height: 5cm (2ins)							
PC21-3	207cm (6ft 9ins)	150cm (4ft 11ins)	132cm (52ins)	75cm (30ins)	350kg (55st)	6.5kg (14lbs)	76 x 23.5 x 13cm (30 x 9 x 5ins)
PC28-3	276cm (9ft 1ins)	200cm (6ft 7ins)	176cm (69ins)	100cm (39ins)	300kg (47st)	8.4kg (19lbs)	102 x 23.5 x 13cm (40 x 9 x 5ins)
Width (Internal Channel): 25cm (10ins) Kerb Height: 5cm (2ins)							
PCW21-3	204cm (6ft 8ins)	152cm (5ft)	128cm (50ins)	76cm (30ins)	350kg (55st)	8.2kg (18lbs)	78 x 29.2 x 13cm (31 x 11 x 5ins)
PCW28-3	294cm (9ft 8ins)	212cm (6ft 11ins)	188cm (74ins)	106cm (42ins)	300kg (47st)	10.9kg (24lbs)	108 x 29.2 x 13cm (43 x 11 x 5ins)

Extra Width

rampCENTRE® permaramp®

Relocatable external ramps



A concept that totally transforms wheelchair access, the Permaramp range is designed to be easily adjusted and fixed down or left in place for every type of threshold.

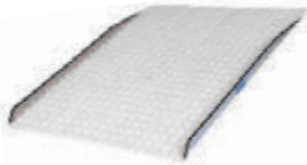
Cut-away kerbs • Easy installation • Extremely durable

- Great for semi-permanent access
- Avoid big installation projects and construction mess
- Can be left in place as long as required, then re-used elsewhere
- Quick and strong access solutions
- Unique Gripdeck™ surface for incredible grip and sustained outside use



permaramp®-original
Single piece semi-permanent ramps

35



permaramp®-original superwide
Superwide single piece semi-permanent ramps

35



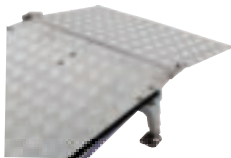
permaramp®-adjust
Adjustable-height semi-permanent ramps

36



permaramp®-adjust superwide
Superwide adjustable-height semi-permanent ramps

36



permaramp®-entry flap
Integral hinged threshold bridge accessory

37



permaramp®-quickrails
Instant, fixed ramp solution with handrails

38



permaramp®-High Rise
Reach double the height

40

rampCENTRE® permaramp® - original

Gripdeck™
technology

Incredible Grip

rain or shine

Instant fixed ramp solution
available in 2 widths and 6 lengths



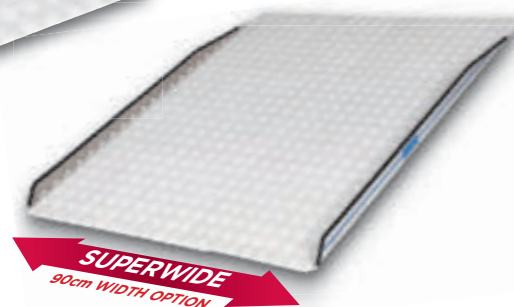
Up to 400kg
capacity



These semi-permanent relocatable ramps provide unmatched value and weight capacity.

Your benefits:

- ▶ Excellent for wooden door thresholds
- ▶ Available in standard 76cm width, or Superwide 90cm width (perfect for single outward-opening doors and a great bariatric ramp solution)
- ▶ Well suited for scooters, mobility devices and sports wheelchairs
- ▶ Fixing options at top and bottom for secure location
- ▶ Up to 400kg capacity



Key Product Information

Permaramp-Original			
Code	Length	Capacity	Weight

Width: 76cm (30ins)

PO9	90cm (3ft)	400kg (63st)	8.5kg (19lbs)
PO12	120cm (4ft)	400kg (63st)	12kg (26lbs)
PO15	150cm (5ft)	400kg (63st)	15kg (33lbs)
PO18	180cm (6ft)	400kg (63st)	18.5kg (41lbs)
PO21	210cm (7ft)	350kg (55st)	22kg (49lbs)
PO24	240cm (8ft)	300kg (47st)	25kg (55lbs)

High Rise Kits (See P40)	POHR30	300cm (10ft)	400kg (63st)	(2 x PO15 + 1 x POHRJ)
	POHR36	360cm (12ft)	400kg (63st)	(2 x PO18 + 1 x POHRJ)
	POHR42	420cm (14ft)	350kg (55st)	(2 x PO21 + 1 x POHRJ)
	POHR48	480cm (16ft)	300kg (47st)	(2 x PO24 + 1 x POHRJ)

High Rise
Kits
(See P40)

Permaramp-Original SUPERWIDE			
Code	Length	Capacity	Weight

Width: 90cm (36ins)

POW9	90cm (3ft)	400kg (63st)	10kg (22lbs)
POW12	120cm (4ft)	400kg (63st)	14kg (31lbs)
POW15	150cm (5ft)	400kg (63st)	18kg (40lbs)
POW18	180cm (6ft)	400kg (63st)	22kg (48lbs)
POW21	210cm (7ft)	350kg (55st)	26kg (58lbs)
POW24	240cm (8ft)	300kg (47st)	30kg (65lbs)

POWHR30	300cm (10ft)	400kg (63st)	(2 x POW15 + 1 x POWHRJ)
POWHR36	360cm (12ft)	400kg (63st)	(2 x POW18 + 1 x POWHRJ)
POWHR42	420cm (14ft)	350kg (55st)	(2 x POW21 + 1 x POWHRJ)
POWHR48	480cm (16ft)	300kg (47st)	(2 x POW24 + 1 x POWHRJ)

rampCENTRE[®] permaramp[®]-adjust



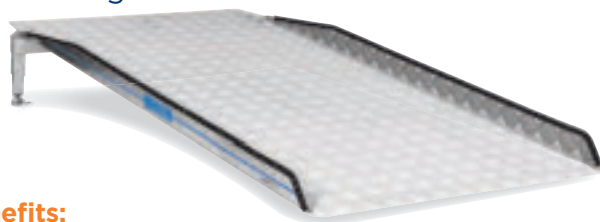
Totally adjustable and self-supporting, great for uPVC thresholds

PA15

PA15 with DTW2



This unique self-supporting product requires no fixing to the threshold and eliminates threshold damage.



Your benefits:

- Easy height adjustment and installation from above
- Designed to clear protruding thresholds and sills
- Fix to any firm flat or sloping surface
- Telescopic legs can be adjusted to accommodate different threshold types and give total height adjustment from 7.5cm (3ins) to 26cm (10.3ins) high
- Entry flap accessory available to transition right into the property (see page 37)
- All lengths available in Superwide 90cm option: a great bariatric ramp solution. Perfect for single outward-opening doors and extra-wide mobility devices

7.5cm
(3ins)
to
26cm
(10.3ins)



Outward-opening doors

Key Product Information

Permaramp-adjust

Code	Length	Capacity	Weight
Width: 76cm (30ins)			
PA9	90cm (3ft)	400kg (63st)	12.5kg (28lbs)
PA12	120cm (4ft)	400kg (63st)	16kg (35lbs)
PA15	150cm (5ft)	400kg (63st)	19kg (42lbs)
PA18	180cm (6ft)	400kg (63st)	22.5kg (50lbs)
PA21	210cm (7ft)	350kg (55st)	26kg (57lbs)
PA24	240cm (8ft)	300kg (47st)	29kg (64lbs)

High Rise
Kits
(See P40)

PAHR30	300cm (10ft)	400kg (63st)	(2 x PA15 + 1 x POHR)
PAHR36	360cm (12ft)	400kg (63st)	(2 x PA18 + 1 x POHR)
PAHR42	420cm (14ft)	350kg (55st)	(2 x PA21 + 1 x POHR)
PAHR48	480cm (16ft)	300kg (47st)	(2 x PA24 + 1 x POHR)

Permaramp-adjust SUPERWIDE

Code	Length	Capacity	Weight
Width: 90cm (36ins)			
PAW9	90cm (3ft)	400kg (63st)	14kg (22lbs)
PAW12	120cm (4ft)	400kg (63st)	18kg (40lbs)
PAW15	150cm (5ft)	400kg (63st)	22kg (48lbs)
PAW18	180cm (6ft)	400kg (63st)	26kg (57lbs)
PAW21	210cm (7ft)	350kg (55st)	30kg (66lbs)
PAW24	240cm (8ft)	300kg (47st)	34kg (75lbs)

High Rise
Kits
(See P40)

PAWHR30	300cm (10ft)	400kg (63st)	(2 x PAW15 + 1 x POWHRJ)
PAWHR36	360cm (12ft)	400kg (63st)	(2 x PAW18 + 1 x POWHRJ)
PAWHR42	420cm (14ft)	350kg (55st)	(2 x PAW21 + 1 x POWHRJ)
PAWHR48	480cm (16ft)	300kg (47st)	2 x PAW24 + 1 x POWHRJ

rampCENTRE® permaramp®-entry flap



The ultimate semi-permanent
uPVC threshold bridging accessory



This bridging flap accessory for the permaramp®-adjust means that you can have a ramp fixed in place outside, with a flap ramp that comes over and down to the inside of the threshold, giving a smooth transition all the way into the property.

Your benefits:

- ▶ Hand strap for fast and easy operation
- ▶ Excellent for sliding and inward-opening doors
- ▶ Unique Gripdeck™ surface on both sides



Code	Length	Capacity	Weight
Width: 72cm (28.3ins)			
PE5	45cm (18ins)	300kg (47st)	4.8kg (10.6lbs)

NOTE: Only for use with standard-width permaramp-adjust, ordered separately

permaramp® - relocatable external ramps

rampCENTRE® permaramp®-quickrails™

The permaramp®-quickrails™ are your answer for an instant, fixed ramp solution with handrails.

This unique range is designed to be extremely universal and easy to fit.

Pre-assembled handrails

- One side, both sides (or no sides!)
- Interchangeable left or right
- Easy retrofit solution
- 4 colour options



Choose from

permaramp®-adjust totally adjustable and self-supporting, great for uPVC thresholds **or**

permaramp®-original for fixing straight to the threshold, ideal for wooden door thresholds

Factory-fitted handrail sockets

Gripdeck™
technology

Incredible Grip
rain or shine

2 widths

- 76cm (30ins)
- 90cm (36ins) Superwide

5 lengths

- 120cm (4ft)
- 150cm (5ft)
- 180cm (6ft)
- 210cm (7ft)
- 240cm (8ft)

Super-fast and convenient assembly!

No-Tools assembly kit option



Seen the video?





permaramp® with quickrails™





Length	permaramp® - original		permaramp® - adjust	
	Both Sides	One Side (FIT LEFT OR RIGHT)	Both Sides	One Side (FIT LEFT OR RIGHT)
Width: 76cm (30ins)				
120cm (4ft)	PO12R2	PO12R1	PA12R2	PA12R1
150cm (5ft)	PO15R2	PO15R1	PA15R2	PA15R1
180cm (6ft)	PO18R2	PO18R1	PA18R2	PA18R1
210cm (7ft)	PO21R2	PO21R1	PA21R2	PA21R1
240cm (8ft)	PO24R2	PO24R1	PA24R2	PA24R1
High Rise Kits (See P40)	300cm (10ft)	POHR30R2	POHR30R1	PAHR30R2 PAHR30R1
	360cm (12ft)	POHR36R2	POHR36R1	PAHR36R2 PAHR36R1
	420cm (14ft)	POHR42R2	POHR42R1	PAHR42R2 PAHR42R1
	480cm (16ft)	POHR48R2	POHR48R1	PAHR48R2 PAHR48R1

Length	permaramp® - original		permaramp® - adjust	
	Both Sides	One Side (FIT LEFT OR RIGHT)	Both Sides	One Side (FIT LEFT OR RIGHT)
Width: 90cm (36ins) SUPERWIDE				
120cm (4ft)	POW12R2	POW12R1	PAW12R2	PAW12R1
150cm (5ft)	POW15R2	POW15R1	PAW15R2	PAW15R1
180cm (6ft)	POW18R2	POW18R1	PAW18R2	PAW18R1
210cm (7ft)	POW21R2	POW21R1	PAW21R2	PAW21R1
240cm (8ft)	POW24R2	POW24R1	PAW24R2	PAW24R1
High Rise Kits (See P40)	300cm (10ft)	POWHR30R2	POWHR30R1	PAWHR30R2 PAWHR30R1
	360cm (12ft)	POWHR36R2	POWHR36R1	PAWHR36R2 PAWHR36R1
	420cm (14ft)	POWHR42R2	POWHR42R1	PAWHR42R2 PAWHR42R1
	480cm (16ft)	POWHR48R2	POWHR48R1	PAWHR48R2 PAWHR48R1

Permaramp-adjust leg height 7.5cm (3ins) to 26cm (10.3ins) - see page 36 for more information. For ramp weights and capacities see pages 35-36

Handrail Colour Options

Add suffix to above codes for colour option if required

Colours		Code Suffix
Original Graphite		No suffix
Original Graphite with Safety Yellow handrails		-Y
Garden Green		-G
Heritage Brown		-B

Permaramp®-quickrails™ dimensions:

- Add 12.5cm (5ins) to the ramp width each side the Quickrails are added
- The Quickrail length is the same as the ramp length and can be adjusted if required
- Handrail height is 92cm (36ins)
- The handrails uprights are 45cm (18ins) from each end of the ramp

Ask for more information about: • Retrofitting permaramp®-quickrails™

- Options for increased capacity
- 'Portable' type applications for events, etc.

Accessories

permaramp®-quickrails™ No-Tool Kit

Code (for one side): **PRNTK**



permaramp®-entry flap

For standard-width permaramp®-adjust
Code: **PE5** - see page 37



rampCENTRE® permaramp®-High Rise

Reach double the height!

NEW



Up to 400kg
capacity



300cm - 480cm long
(10ft - 16ft)



Install the Permaramp®-High Rise in as little as 30 minutes!

Easy to specify, and quick to fit, this ramp has all the Permaramp® benefits, and more. A straightforward and compact solution that reaches greater heights for lower cost avoiding disruptive building work and lengthy installs.

Your benefits:

- Reach from 300cm to 480cm (10ft to 16ft) with relocatable ramps
- Extremely quick and easy to install
- Compatible with Superwide, Adjust, and Original Permaramp® options
- Bridge uPVC thresholds with the entry flap accessory (page 37)



High Rise - Kit Options

Tailor the High Rise kit to suit your application needs

- Quickrail handrails for enhanced safety and support
- Superwide width option for wider mobility requirements
- Self-supporting Permaramp®-adjust for uPVC thresholds
- Install from 1:15 to 1:6 gradient (See page 5 'How steep')



permaramp®-High Rise with quickrails™ - see pages 38-39

permaramp®-original		
Length	Both Sides	One Side (FIT LEFT OR RIGHT)

Width: 76cm (30ins)

300cm (10ft)	POHR30R2	POHR30R1
360cm (12ft)	POHR36R2	POHR36R1
420cm (14ft)	POHR42R2	POHR42R1
480cm (16ft)	POHR48R2	POHR48R1

Width: 90cm (36ins) SUPERWIDE

300cm (10ft)	POWHR30R2	POWHR30R1
360cm (12ft)	POWHR36R2	POWHR36R1
420cm (14ft)	POWHR42R2	POWHR42R1
480cm (16ft)	POWHR48R2	POWHR48R1

permaramp®-adjust		
Length	Both Sides	One Side (FIT LEFT OR RIGHT)

Width: 76cm (30ins)

300cm (10ft)	PAHR30R2	PAHR30R1
360cm (12ft)	PAHR36R2	PAHR36R1
420cm (14ft)	PAHR42R2	PAHR42R1
480cm (16ft)	PAHR48R2	PAHR48R1

Width: 90cm (36ins) SUPERWIDE

300cm (10ft)	PAWHR30R2	PAWHR30R1
360cm (12ft)	PAWHR36R2	PAWHR36R1
420cm (14ft)	PAWHR42R2	PAWHR42R1
480cm (16ft)	PAWHR48R2	PAWHR48R1

Permaramp-adjust leg height 7.5cm (3ins) to 26cm (10.3ins) - see page 36 for more information

permaramp®-High Rise (without quickrails™) - see pages 35 - 36

permaramp®-original			
Code	Length	Capacity	Includes

Width: 76cm (30ins)

POHR30	300cm (10ft)	400kg (63st)	(2 x PO15 + 1 x POHRJ)
POHR36	360cm (12ft)	400kg (63st)	(2 x PO18 + 1 x POHRJ)
POHR42	420cm (14ft)	350kg (55st)	(2 x PO21 + 1 x POHRJ)
POHR48	480cm (16ft)	300kg (47st)	(2 x PO24 + 1 x POHRJ)

Width: 90cm (36ins) SUPERWIDE

POWHR30	300cm (10ft)	400kg (63st)	(2 x POW15 + 1 x POWHRJ)
POWHR36	360cm (12ft)	400kg (63st)	(2 x POW18 + 1 x POWHRJ)
POWHR42	420cm (14ft)	350kg (55st)	(2 x POW21 + 1 x POWHRJ)
POWHR48	480cm (16ft)	300kg (47st)	(2 x POW24 + 1 x POWHRJ)

permaramp®-adjust			
Code	Length	Capacity	Includes

Width: 76cm (30ins)

PAHR30	300cm (10ft)	400kg (63st)	(2 x PA15 + 1 x POHRJ)
PAHR36	360cm (12ft)	400kg (63st)	(2 x PA18 + 1 x POHRJ)
PAHR42	420cm (14ft)	350kg (55st)	(2 x PA21 + 1 x POHRJ)
PAHR48	480cm (16ft)	300kg (47st)	(2 x PA24 + 1 x POHRJ)

Width: 90cm (36ins) SUPERWIDE

PAWHR30	300cm (10ft)	400kg (63st)	(2 x PAW15 + 1 x POWHRJ)
PAWHR36	360cm (12ft)	400kg (63st)	(2 x PAW18 + 1 x POWHRJ)
PAWHR42	420cm (14ft)	350kg (55st)	(2 x PAW21 + 1 x POWHRJ)
PAWHR48	480cm (16ft)	300kg (47st)	(2 x PAW24 + 1 x POWHRJ)

Permaramp-adjust height 7.5cm (3ins) to 25cm (10ins) - See page 36 for more information

Accessories			
Permaramp®-High Rise Joiner*			POHRJ
Permaramp®-High Rise Joiner SUPERWIDE*			POWHRJ
Permaramp®-High Rise Quickrail Connector*			POHRQJ
Rubber foot accessory for indoor use (pair)			WRIF
Soft-ground leg bearer For grass, flower beds, gravel etc	Long: 15 x 3.8 x 120cm (6 x 1.6 x 48ins)		WRLB
	Short: 15 x 3.8 x 30cm (6 x 1.6 x 12ins)		WRLBS

*Included in High Rise kits

rampCENTRE[®] **Welcome[®]-Giant Half-Step**

Until now, the traditional half-step simply offered an ambulant user shallower step access.

The proven Welcome[®]-Giant Half-Step reaches a new level!
This unique and modular range takes into account that people with various walking challenges need more workable solutions.



Uses

43



Features and benefits

44



Kits

45



Accessories

45

3 challenges solved...

Even More User Benefits

- Safely pause at the door
- All door types including uPVC
- No building work required

1. Safe and Manageable Step Heights

A single Welcome®-Giant Half-Step will instantly create a safe and manageable step for thresholds up to 30cm (12ins) high. Add handrails and other accessories as required for the specific user and application.



2. Eliminate the Trip Risk of Raised Threshold Obstacles

Unlike any other, the Welcome®-Giant Half-Step can be installed level with the top of the threshold and an optional doorplate accessory used to create a flush transition with no unsafe gaps or 'step-over' obstacle risk. This especially improves access for those with limited leg/knee mobility, drop foot or shuffling gait. The user simply steps up or steps down, rather than risking negotiating up and over the raised threshold.

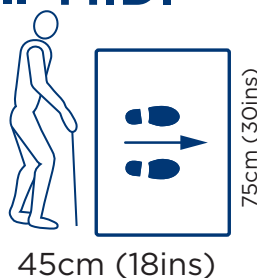


3. Instant, Safe Handrails

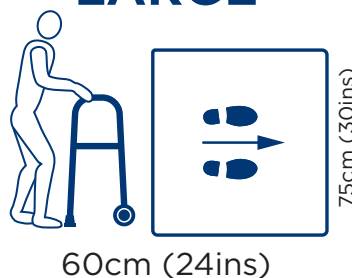
The multiple benefits of the Welcome®-Giant Half-Step solution include providing safe and instant handrails wherever required. This is perfect for situations where attaching permanent grab rails or handrails to a property is not practical. It also removes the risk of falls from leaning over the step to reach a wall-fixed grab rail. The doorplate accessory is a great solution for curved or rounded steps.



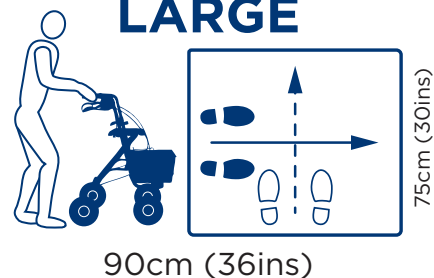
3 sizes... MIDI



LARGE



EXTRA-LARGE



rampCENTRE® Welcome®-Giant Half-Step



Unique Optional Doorplate Accessory

Allows the step to be set flush with the top of the threshold, and eliminates the gap between the step and threshold



Join Half-Steps

Higher thresholds can now be made safe and manageable for those with walking difficulties, simply by adding multiple shallow steps



Height-Extension Legs

Enables a greater range of single and double step options

Foot Options

Rubber feet and fix-down feet (required when using handrails) now supplied with every step as standard



Integral Safety Kerb with Every Handrail

Ensures feet or walking devices can't stray off the edge



Safety Toe-Plate

With every Half-Step, to reduce the risk and eliminate the danger of feet getting caught underneath the step

With or Without?

Useful Accessory Options – So Easy to Choose and Use!

- Handrails – none, one side, or both sides
- Product kits for easy ordering





Up to 400kg capacity








Seen the video?



Specifications	MIDI	LARGE	EXTRA-LARGE
 Giant Half-Step With 75cm anti-trip toe-plate, rubber and fix-down feet; Height range: 8 - 15cm (3.1 - 6ins)	 45cm (18ins)	 60cm (24ins)	 90cm (36ins)
Ambulant	✓	✓	✓
Limited Knee/Leg Mobility	-	✓	✓
Walking-Frame	-	✓	✓
Rollator	-	-	✓
Limited Space	✓	✓	-
Outward-opening Doors	-	-	✓
Capacity	400kg (63st)	400kg (63st)	400kg (63st)
Code	WHSM	WHSL	WHSXL

KITS FOR EASY ORDERING	MIDI	LARGE	EXTRA-LARGE
 Giant Half-Step Kit Giant Half-Step Kit with handrail; height range: 8 - 15cm (3.1 - 6ins)	WHSMR Includes: WHSM WHS45	WHSLR Includes: WHSL WHS60	WHSXLR Includes: WHSXL WHS90
 Double Giant Half-Step Kit Double Giant Half-Step kit with handrails; height up to 20cm (8ins) (includes height-extension and handrail joining kits)	WHSM2R Includes: 2 x WHSM 2 x WHS45 WHSRJK WHSLXK	WHSL2R Includes: 2 x WHSL 2 x WHS60 WHSRJK WHSLXK	WHSXL2R Includes: 2 x WHSXL 2 x WHS90 WHSRJK WHSLXK

ACCESSORIES	MIDI	LARGE	EXTRA-LARGE
 Handrail With integral safety kerbs. Fit to one side or opposite sides. Universal height: 90cm (36ins)	WHS45 45cm (18ins)	WHS60 60cm (24ins)	WHS75 75cm (30ins) WHS90 90cm (36ins)
 90cm Anti-Trip Toe-Plate Provides additional trip protection on the long (90cm) Extra-Large Half-Step sides			WHSTP90
 Doorplate Closes the gap between the Giant Half-Step and the door frame; self-supporting for uPVC frames			WHSDP75 75cm (30ins)
 Height-Extension Kit Extend any Giant Half-Step up to 20cm (8ins) high. Useful for 'building over' existing steps			WHSLXK
 Handrail Joiner Kit Join handrails of any two or more adjacent half-steps (2 pieces)			WHSRJK

All Welcome®-Giant Half-Steps are supplied with our easy-to-follow instruction manual. For further application and assembly support, call us on 020 8275 0375.

Welcome to the all-new Made in Britain Welcome[®]!

- Versatile independent access solution
- Intuitive assembly and fast installation
- Durable and attractive
- Cost-effective and reuseable



NEW Welcome[®] - What's new?
Totally new and unique innovations

47



NEW Welcome[®] - Highlights & Spec
Everything you need to know

48



NEW Welcome[®] - Choices - width, handrails and colours
Perfectly meet any requirement

49



NEW Welcome[®] - Complete Kits
So easy to specify and order these kits

50



NEW Welcome[®] - Patio Platform
Great for double door applications

51



NEW Welcome[®] - Accessories
Comprehensive solutions for every access challenge

52



NEW Welcome[®] - Step Kits and Landings
Regular, Easy or Super-Easy steps in 2 widths for Welcome[®] Systems or standalone

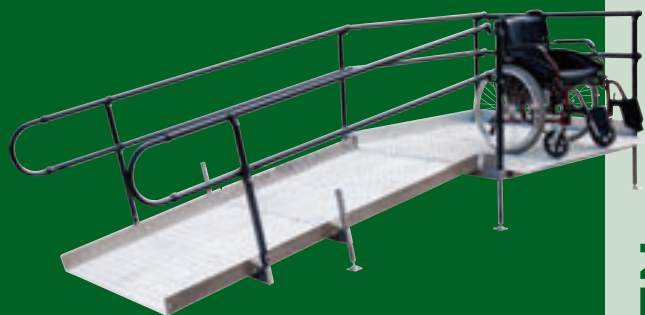
54



NEW Welcome[®] - Standalone Handrail Kits
Safe and easy access all the way

56

NEW Welcome[®] What's New?



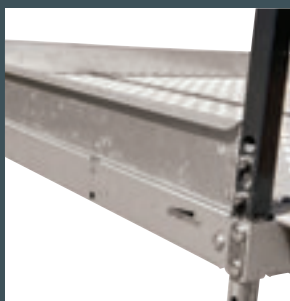
NEW Welcome[®] - modular ramp & step system

Platforms

New 150cm (5ft) platform size



Low profile platforms and mounting options



10cm (4ins) high kerbs



Door Entry Flap



Step Kits - Regular, Easy or Super-Easy steps



Self-supporting doorplate for all platform sizes

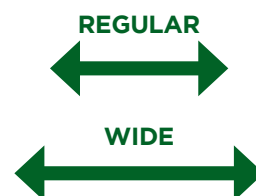


Faster assembly

Now with less fixings and central diamond holes

Now in 2 widths

Regular 90cm (3ft) and, Wide 120cm (4ft) (with 10cm (4ins) kerbs)



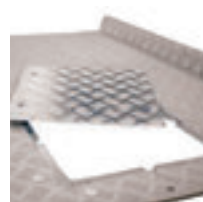
Now up to 85cm (33.5ins) high

New patented leg and universal foot

Huge range of new accessories



Handrail elbow



Access hatch



Platform angle extension

Standalone



Step Kits and Landings



Handrail kits

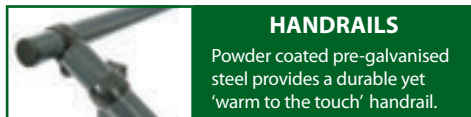
NEW Welcome® - Highlights & Spec



Attractive modular ramp solution that suits your budget, needs and timescales

Your benefits:

- Complies fully with Building Regulations Document M for dwellings
- Order in kits for simple, effective specifying and ordering
- Extremely durable construction and finish - designed for years of outdoor use
- CAD drawings available for any variation on request
- Easily modified, adapted and reused



HANDRAILS

Powder coated pre-galvanised steel provides a durable yet 'warm to the touch' handrail.



STRENGTH

Built to last, the system has a huge 500kg capacity.

2 WIDTHS

REGULAR width
90cm (3ft)
or
WIDE width
120cm (4ft)



ADJUSTABLE LEGS

Height-adjustable legs can be adjusted to suit ground variations and a huge range of step heights.



PLATFORM

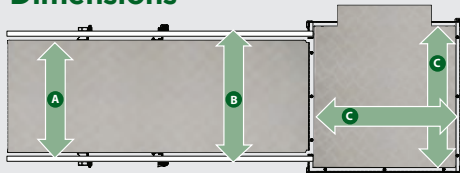
3 platform sizes available. If a greater size is required, simply join them together.



DOORPLATE

Standard 75cm wide doorplate supplied with every WRB and WRWB system. Optional self-supporting and wide versions also available (see page 53)

Key Dimensions

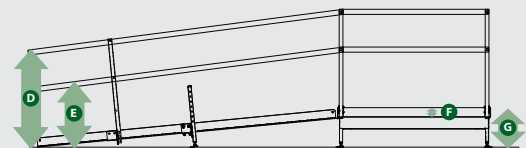


REGULAR width 90cm (3ft)

- A** - Internal Width - 90cm (36ins)
- B** - External Width - 110cm (43ins)
- C** - Platform - 122cm (48ins)

WIDE width 120cm (4ft)

- A** - Internal Width - 120cm (48ins)
- B** - External Width - 140cm (55ins)
- C** - Platform - 150cm (60ins) (Two-person install)



- D** - Handrails - 90cm (36ins)
 - E** - Mid Rails - 60cm (24ins)
 - F** - Kerbs - 10cm (4ins) (Note: 90cm (3ft) Regular width Ramp Kerb - 8cm (3ins))
 - G** - Height Range - 12cm (4.7ins) to 42cm (16.5ins) as standard (Minimum platform/WRB height with low mount accessory - 7.5cm (3ins)) (Maximum height with leg extension accessories - 85cm (33.5ins))
- Capacity 500kg (79st) per 2m ramp length



Fast one-person install



Easy to specify and order



100% modular



Same-day dispatch



3 Easy choices!

ONE CODE
GIVES
ALL YOU
NEED!!

1 Easy Width Choice

NEW Welcome® ramps are now available from stock in two widths to meet all requirements.

REGULAR



90cm (3ft)

REGULAR width 90cm (3ft)

The old-time-favourite width, both serviceable and compact. Minimum required width for Building Regulations Document M for Dwellings (England and Wales).

Product codes remain unchanged, e.g. WR, WRA, WRB

WIDE width 120cm (4ft)

This great addition to the NEW Welcome® range opens up fresh opportunities.

Wide ramp kits include the new generous size 150cm (5ft) platform.

WIDE



120cm (4ft)

Choose 120cm (4ft) WIDE width for:

- Excellent and compliant solution for communal and public areas
- Turning space for larger mobility devices
- Preferred width for Scotland and some councils
- Bariatric use

2 Easy Handrail Selection

Choose the handrail type based on the required appearance, budget and specific application.

Double Handrails



The best and safest handrail choice

- Double handrails create an effective and reassuring barrier for users and carers
- Add optional bow ends for comfort, enhanced appearance and safety
- Double handrails with Bow Ends are preferred for communal/public areas and by some councils

Single Handrails



Single handrails are a very cost-effective solution for some applications

- Compliant for residential/single dwellings
- Suited for short/low ramps

No Handrails



Ramp kits are available with no handrails

3 Easy Colour Options

NEW Welcome® ramps are available in a full range of carefully chosen and universally appealing colours including the option of Safety Yellow handrails.

Choose the colour and simply add the single letter code suffix as shown on page 52.



Original Graphite

The standard Welcome® colour is a carefully selected and universally appealing soft dark grey



Garden Green

A traditional deep green, perfect for garden environments



Heritage Brown

A dark, rich brown to perfectly complement traditional and heritage buildings



Safety Yellow

A carefully selected rich yellow, perfect for visual safety needs (handrails only)



Garden Green



Heritage Brown



Original Graphite with
Safety Yellow handrails

NEW Welcome® - Kits

These kits include all the components required for the chosen configuration and are designed to resolve the most common applications.

ONE CODE
GIVES
ALL YOU
NEED!!

Kit A – Ramp only



Often used to provide access to an existing platform or step. Available with any handrail combination and the fully self-supporting integral doorplate is great for uPVC thresholds.

Bow Ends and other accessories on page 52 and 53.

	Ramp Length	Double Handrail		Single Handrail		No Handrail
		Both Sides	One Side	Both Sides	One Side	
REGULAR width 90cm (3ft)	120cm (4ft)	WRA12-E	WRA12-D	WRA12-C	WRA12-B	WRA12-A
	180cm (6ft)	WRA18-E	WRA18-D	WRA18-C	WRA18-B	WRA18-A
	240cm (8ft)	WRA24-E	WRA24-D	WRA24-C	WRA24-B	WRA24-A
	300cm (10ft)	WRA30-E	WRA30-D	WRA30-C	WRA30-B	WRA30-A
	360cm (12ft)	WRA36-E	WRA36-D	WRA36-C	WRA36-B	WRA36-A
	420cm (14ft)	WRA42-E	WRA42-D	WRA42-C	WRA42-B	WRA42-A
WIDE width 120cm (4ft)	480cm (16ft)	WRA48-E	WRA48-D	WRA48-C	WRA48-B	WRA48-A
	120cm (4ft)	WRWA12-E	WRWA12-D	WRWA12-C	WRWA12-B	WRWA12-A
	180cm (6ft)	WRWA18-E	WRWA18-D	WRWA18-C	WRWA18-B	WRWA18-A
	240cm (8ft)	WRWA24-E	WRWA24-D	WRWA24-C	WRWA24-B	WRWA24-A
	300cm (10ft)	WRWA30-E	WRWA30-D	WRWA30-C	WRWA30-B	WRWA30-A
	360cm (12ft)	WRWA36-E	WRWA36-D	WRWA36-C	WRWA36-B	WRWA36-A
	420cm (14ft)	WRWA42-E	WRWA42-D	WRWA42-C	WRWA42-B	WRWA42-A
	480cm (16ft)	WRWA48-E	WRWA48-D	WRWA48-C	WRWA48-B	WRWA48-A

Kit B – Ramp and Platform



A very popular installation layout, complying with the requirements for a resting platform at the top of a ramp. The platforms can be used in straight-through or turning configurations.

Bow Ends and other accessories on page 52 and 53.

	Ramp Length	Length Inc. Platform	Double Handrail		Single Handrail		No Handrail
			Both Sides	One Side	Both Sides	One Side	
REGULAR width 90cm (3ft)	120cm (4ft)	240cm (8ft)	WRB12-E	WRB12-D	WRB12-C	WRB12-B	WRB12-A
	180cm (6ft)	300cm (10ft)	WRB18-E	WRB18-D	WRB18-C	WRB18-B	WRB18-A
	240cm (8ft)	360cm (12ft)	WRB24-E	WRB24-D	WRB24-C	WRB24-B	WRB24-A
	300cm (10ft)	420cm (14ft)	WRB30-E	WRB30-D	WRB30-C	WRB30-B	WRB30-A
	360cm (12ft)	480cm (16ft)	WRB36-E	WRB36-D	WRB36-C	WRB36-B	WRB36-A
	420cm (14ft)	540cm (18ft)	WRB42-E	WRB42-D	WRB42-C	WRB42-B	WRB42-A
WIDE width 120cm (4ft)	480cm (16ft)	600cm (20ft)	WRB48-E	WRB48-D	WRB48-C	WRB48-B	WRB48-A
	120cm (4ft)	270cm (9ft)	WRWB12-E	WRWB12-D	WRWB12-C	WRWB12-B	WRWB12-A
	180cm (6ft)	330cm (11ft)	WRWB18-E	WRWB18-D	WRWB18-C	WRWB18-B	WRWB18-A
	240cm (8ft)	390cm (13ft)	WRWB24-E	WRWB24-D	WRWB24-C	WRWB24-B	WRWB24-A
	300cm (10ft)	450cm (15ft)	WRWB30-E	WRWB30-D	WRWB30-C	WRWB30-B	WRWB30-A
	360cm (12ft)	510cm (17ft)	WRWB36-E	WRWB36-D	WRWB36-C	WRWB36-B	WRWB36-A
	420cm (14ft)	570cm (19ft)	WRWB42-E	WRWB42-D	WRWB42-C	WRWB42-B	WRWB42-A
	480cm (16ft)	630cm (21ft)	WRWB48-E	WRWB48-D	WRWB48-C	WRWB48-B	WRWB48-A

Note. Wide ramp kits include the new generous size 150cm (5ft) square platform.

NEW Welcome® - Patio Platforms

Your benefits:

- Level platform area clear of door swing (Building Regulations Document M)
- Incredibly useful 180 x 122cm (6 x 4ft) size



1 Select platform layout and handrail type.

For ramp width	Ramp / Entry	Door / Exit	Double Handrail	Single Handrail	No Handrail
REGULAR width 90cm (3ft)	End	End	WRP18EE-E	WRP18EE-C	WRP18EE-A
	End	Side*	WRP18ES-E	WRP18ES-C	WRP18ES-A
	Side	End	WRP18SE-E	WRP18SE-C	WRP18SE-A
	Side	Side*	WRP18SS-E	WRP18SS-C	WRP18SS-A
WIDE width 120cm (4ft)	Side	End	WRWP18SE-E	WRWP18SE-C	WRWP18SE-A
	Side	Side*	WRWP18SS-E	WRWP18SS-C	WRWP18SS-A

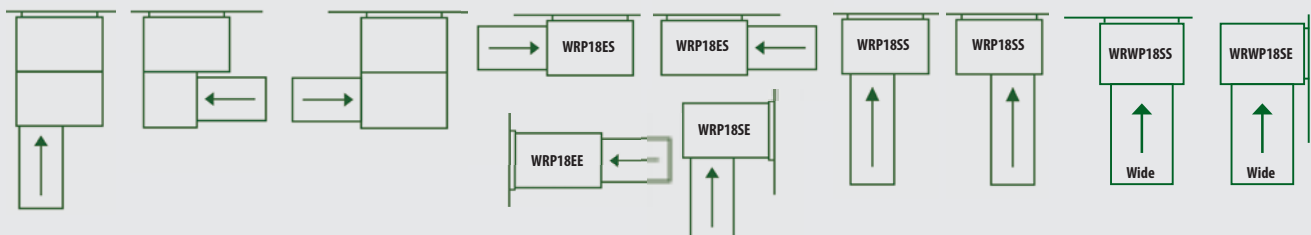
* Side exit platforms include WDP15S 150cm wide doorplate.

2 Select ramp width, ramp length and handrail type

	Ramp Length	Double Handrail		Single Handrail		No Handrail
		Both Sides	One Side	Both Sides	One Side	
REGULAR width 90cm (3ft)	120cm (4ft)	WR12-E	WR12-D	WR12-C	WR12-B	WR12-A
	180cm (6ft)	WR18-E	WR18-D	WR18-C	WR18-B	WR18-A
	240cm (8ft)	WR24-E	WR24-D	WR24-C	WR24-B	WR24-A
	300cm (10ft)	WR30-E	WR30-D	WR30-C	WR30-B	WR30-A
	360cm (12ft)	WR36-E	WR36-D	WR36-C	WR36-B	WR36-A
	420cm (14ft)	WR42-E	WR42-D	WR42-C	WR42-B	WR42-A
WIDE width 120cm (4ft)	480cm (16ft)	WR48-E	WR48-D	WR48-C	WR48-B	WR48-A
	120cm (4ft)	WRW12-E	WRW12-D	WRW12-C	WRW12-B	WRW12-A
	180cm (6ft)	WRW18-E	WRW18-D	WRW18-C	WRW18-B	WRW18-A
	240cm (8ft)	WRW24-E	WRW24-D	WRW24-C	WRW24-B	WRW24-A
	300cm (10ft)	WRW30-E	WRW30-D	WRW30-C	WRW30-B	WRW30-A
	360cm (12ft)	WRW36-E	WRW36-D	WRW36-C	WRW36-B	WRW36-A
	420cm (14ft)	WRW42-E	WRW42-D	WRW42-C	WRW42-B	WRW42-A
	480cm (16ft)	WRW48-E	WRW48-D	WRW48-C	WRW48-B	WRW48-A

Note: Ramp and platform handrail type should match.

Configuration and code examples



See next page for accessories, options and upgrades

NEW Welcome® Popular Accessory Options

Enhance your NEW Welcome® ramp with these very popular accessories



Colour options

To order simply follow the 2 steps below:

- 1 Choose/select your ramp configuration.**
- 2 Confirm your colour choice:**
 - A.** All standard codes will be delivered in Original Graphite colour.
 - B.** For any other colour/colour combination add the relevant suffix from the table to the end of your chosen standard ramp kit A or kit B code.
E.g. for WRB12-E in Original Graphite with Safety Yellow handrails, the code would be WRB12-E-Y.

Colour code Combination		Code Suffix
Original Graphite		No suffix
Original Graphite with Safety Yellow handrails		-Y
Garden Green		-G
Heritage Brown		-B

Legs

Standard leg (pair) **WL**
Height range - 12cm (4.7ins) to 42cm (16.5ins)

Tall leg (pair) **WLT**
Height range - 12cm (4.7ins) to 62cm (24.4ins)
(20cm (8ins) taller than standard leg)

Leg Extensions

Regular leg extension (pair) **WLX**
Add 15cm (6ins) to either Welcome® leg height

Long leg extension (pair) **WLXT**
Add 30cm (12ins) to either Welcome® leg height



Handrail Uprights

For Ramps **WHUR**
For Platforms **WHUP**

For colour options add suffix shown above.

Foot for indoor use

Rubber foot accessory for indoor use (pair) **WRIF**



Platform Low Mount Foot Kit pair WPLM
(Mount Welcome® Platform as low as 7.5cm (3ins))

Elbow/Connector/Bracket kits

For joining/extending and adapting Welcome® Ramp kits



WHELBOW
Elbow (0 - 90 degrees)
'Fitter's dream' for all angles, inclines and corners



WHCONN
Connector (straight/rigid)



WHBRKT
Bracket (top/mid-rail)



WHBADTMID
Mid-rail bracket adaptor (for steps)

Access Hatch



WPROAH
For ramps or platforms (43 x 66cm); Requires cutting/drilling to fit.

Soft-Ground Leg Bearer

For grass, flower beds, gravel, etc.



Long **WRLB** 15 x 3.8 x 120cm (6 x 1.6 x 48ins)
Short **WRLBS** 15 x 3.8 x 30cm (6 x 1.6 x 12ins)

Infill Kerbs (pair)

WRIK



Spares & Tool Kit

WRSFK



Square Platforms

NEW

REGULAR 122cm

WRP12-E (Double handrails)

WRP12-C (Single handrails)

WRP12-A (No handrails)

WIDE 150cm

WRP15-E (Double handrails)

WRP15-C (Single handrails)

WRP15-A (No handrails)

See also 122 x 180cm Patio Platform options on page 51



Welcome® Platform Door Entry Flap

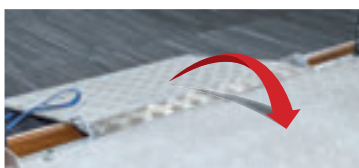
Width: 72cm (28.3ins) Length: 45cm (18ins)

WPEF12 122cm platform side

WPEF15 150cm platform side

WPEF18 180cm platform side

NEW



Self-Supporting Doorplate

Avoids threshold fixings – no more cracked uPVC frames

Upgrade Kits

Self-supporting upgrade kit only (excludes doorplate).

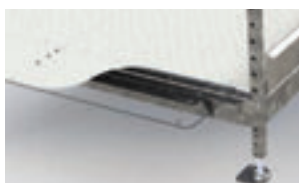
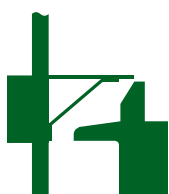
For use with 75cm doorplates supplied with kits.

For WRB REGULAR width ramp kits **Code: WRBSD8**

For WRWB WIDE width ramp kits **Code: WRWBSD8**

Complete Kits

NEW SIZES



Complete kit includes doorplate

(75cm) WDP8S

(100cm) WDP10S

(150cm) WDP15S

Complete kits		
for 122cm platform side	for 150cm platform side	for 180cm platform side
WPS12D8	WPS15D8	WPS18D8
WPS12D10	WPS15D10	WPS18D10
N/A	WPS15D15	WPS18D15

NEW Welcome® Platform Angle Extensions

NEW

Universal for REGULAR 90cm or WIDE 120cm ramp widths and any size platform side.

30 degrees angle:

WPRE30-E (Double Handrails)

WPRE30-C (Single Handrails)

WPRE30-A (No Handrails)

45 degrees angle:

WPRE45-E (Double Handrails)

WPRE45-C (Single Handrails)

WPRE45-A (No Handrails)

Bow End



Add optional bow end accessories for additional comfort, safety and enhanced appearance. **WRBE** (one side)
For colour options add suffix shown opposite.

Ramp Join Spine



Also use midway on ramp modules to increase capacity by 50% to 750kg (118st) per 2m of ramp length.
REGULAR width **WRJS**
WIDE width **WRWJS**

Wide/long doorplates for platform sides



Code:	Size
WDP8S	74x17cm
WDP8L	74x23.5cm
WDP10S	105x17cm
WDP10L	105x23.5cm
WDP15S	143x17cm*
WDP15L	143x23.5cm*
WDPBLANK	114x 57cm

(cut/drill to fit as required)

*For 150cm and 180cm Platform Sides

Ramp to Platform Joiner

Connect ramps to platform. Universal, up or down.



NEW

WPDR
REGULAR (90cm) width Ramp
WPWDR
WIDE (120cm) width ramp

Platform to Platform Joiner

Simply join platforms together.



Code:	Size
WPP	122cm
WPP15	150cm
WPP18	180cm
WPPCC	Corner cover

Welcome® Platform Gate



WPGATE
Available in Original Graphite and Garden Green colours.
For colour options add suffix shown opposite.

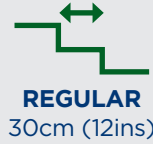
NEW Welcome® - Step Kits



Your benefits:

- Totally configurable and adjustable with just 4 main step components
- Handrail and colour options
- Building Regulations Document M compliant
- Build over/straddle existing steps

Choice of step tread (going) for all applications including walking-frame and rollator use.

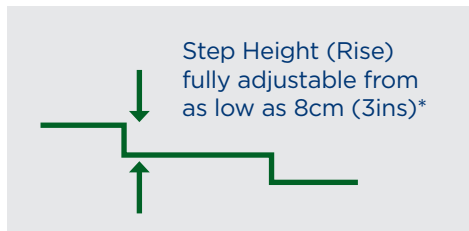


Essential safety benefits:

- Even step heights and closed risers
- 10cm side kerbs
- Consistent handrail height
- Self-draining
- Max component weight less than 5kg (11lbs)

Specifications:

- Step height 8 - 17cm (3.2 - 6.7ins)
- 500kg (79st) capacity
- Height up to 85cm (33.5ins)



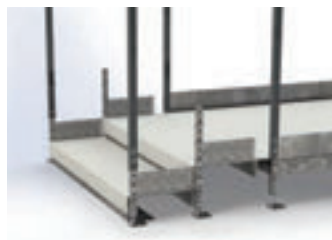
Step Kits for Welcome® Platforms

Specifications:

- Overall width 128cm (50.4ins)

Kit height range (Platform height):

- 1 step kit 16 - 34cm (6.3 - 13.4ins)
- 2 step kit 24 - 51cm (9.5 - 20.1ins)*
- 3 step kit 32 - 68cm (12.6 - 26.8ins)*
- 4 step kit 40 - 85cm (15.7 - 33.5ins)*



Width: 120cm (4ft) wide

Step Tread (Going)	Kit	Double Handrail with Bow Ends	Single Handrail
REGULAR 30cm (12ins)	1 step	WSWR1-E	WSWR1-C
	2 step	WSWR2-E	WSWR2-C
	3 step	WSWR3-E	WSWR3-C
	4 step	WSWR4-E	WSWR4-C
EASY 60cm (24ins)	1 step	WSWE1-E	WSWE1-C
	2 step	WSWE2-E	WSWE2-C
	3 step	WSWE3-E	WSWE3-C
	4 step	WSWE4-E	WSWE4-C
SUPER-EASY 90cm (36ins)	1 step	WSWS1-E	WSWS1-C
	2 step	WSWS2-E	WSWS2-C
	3 step	WSWS3-E	WSWS3-C
	4 step	WSWS4-E	WSWS4-C

*Upper height ranges will require leg extension accessories for the platform



Standalone Step and Landing Kits

Your benefits:

- REGULAR 90cm or WIDE 120cm width
- Fully self-supporting doorplate
- Supplied with wall brackets
- Top landing options



Specifications:

- Overall width: regular 98cm (38.6ins)
- Overall width: WIDE 128cm (50.4ins)
- Doorplate: 75 x 17cm (30 x 6.7ins)

Kit height range:

- 1 step kit 8 – 17cm (3.2 – 6.7ins)
- 2 step kit 16 – 34cm (6.3 – 13.4ins)
- 3 step kit 24 – 51cm (9.5 – 20.1ins)
- 4 step kit 32 – 68cm (12.6 – 26.8ins)



(Optional landing increases max. height range by 1 riser. Add 8 – 17cm/3.2 – 6.7ins)

Standalone Steps

REGULAR 90cm (3ft) width

Step Tread (Going)	Kit	Double Handrail with Bow Ends	Single Handrail
REGULAR 30cm (12ins) 	1 step	WSSR1-E	WSSR1-C
	2 step	WSSR2-E	WSSR2-C
	3 step	WSSR3-E	WSSR3-C
	4 step	WSSR4-E	WSSR4-C
EASY 60cm (24ins) 	1 step	WSSE1-E	WSSE1-C
	2 step	WSSE2-E	WSSE2-C
	3 step	WSSE3-E	WSSE3-C
	4 step	WSSE4-E	WSSE4-C
SUPER-EASY 90cm (36ins) 	1 step	WSSS1-E	WSSS1-C
	2 step	WSSS2-E	WSSS2-C
	3 step	WSSS3-E	WSSS3-C
	4 step	WSSS4-E	WSSS4-C

WIDE 120cm (4ft) width

Kit	Double Handrail with Bow Ends	Single Handrail
1 step	WSWSR1-E	WSWSR1-C
2 step	WSWSR2-E	WSWSR2-C
3 step	WSWSR3-E	WSWSR3-C
4 step	WSWSR4-E	WSWSR4-C
1 step	WSWSE1-E	WSWSE1-C
2 step	WSWSE2-E	WSWSE2-C
3 step	WSWSE3-E	WSWSE3-C
4 step	WSWSE4-E	WSWSE4-C
1 step	WSWSS1-E	WSWSS1-C
2 step	WSWSS2-E	WSWSS2-C
3 step	WSWSS3-E	WSWSS3-C
4 step	WSWSS4-E	WSWSS4-C

Landings

WIDTH (to match step widths)	Length	Type	Double Handrail	Single Handrail
REGULAR width 90cm (3ft)	60cm (24ins)	Through	WSL6TH-E	WSL6TH-C
	90cm (36ins)	Through	WSL9TH-E	WSL9TH-C
	90cm (36ins)	Turning	WSL9TU-E	WSL9TU-C
	120cm (48ins)	Through	WSL12TH-E	WSL12TH-C
	120cm (48ins)	Turning	WSL12TU-E	WSL12TU-C
WIDE width 120cm (4ft)	120cm (48ins)	Universal	WSWL12UN-E	WSWL12UN-C

Height range 16-50cm (6.3 – 19.7ins). See also Leg Extensions page 52. Maximum height 85cm (33.5ins)



Fast one-person install



Easy to specify and order



100% modular



Same-day dispatch



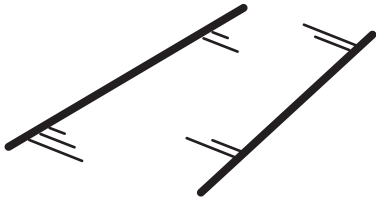
NEW Welcome® - Standalone Handrail Kits

Safe and easy access all the way

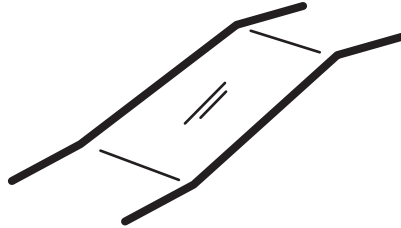


One kit for all applications:

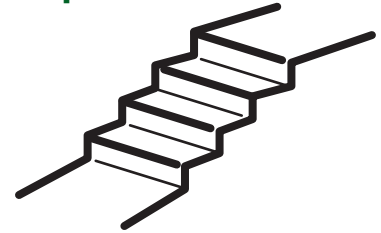
Paths



Slopes



Steps



Fast, easy installation

- ▶ No cutting/no Hot-Work on site
- ▶ No gluing or riveting
- ▶ 4-way height and angle adjustment
- ▶ Join seamlessly to Welcome® Ramps and Steps handrails



A solution for every application

- ▶ Choose any mounting option – wall-mount, base-fix, concrete-in or face-fix
- ▶ Join kits with elbows, straight connectors or corner post
- ▶ Handrail, mid-rail and bow end options
- ▶ Telescopic length adjustment option
- ▶ Colour options

High specification convenience!

- ▶ Fully galvanised steel with high-build Polyester Powdercoat finish
- ▶ Complete ready-to-go kits, components or bulk packs



Easy Colour Options

NEW Welcome® handrails are available in a full range of carefully chosen and universally appealing colours including the option of Safety Yellow handrails. Choose the colour and simply add the single letter code suffix as shown on page 59.



Original Graphite



Garden Green



Heritage Brown



Safety Yellow

Choose any mounting option



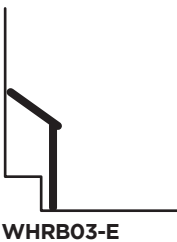
Handrail, mid-rail and Bow End options



Simply join kits together as required



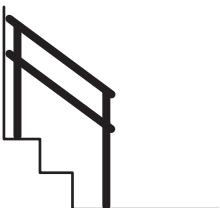
Standalone Handrail Example Kits/Codes



WHRB03-E



WHRB12-D + WRBE



WHRB12-D



WHRB12-E

ONE CODE
GIVES
ALL YOU
NEED!!

Standalone Handrail Kit Codes

	Length	Uprights	Double Handrail	Single Handrail
Wall-Mount	30cm (1ft)	-	-	WHRW03
	60cm (2ft)	-	-	WHRW06
	120cm (4ft)	-	-	WHRW12
	180cm (6ft)	-	-	WHRW18
	240cm (8ft)	-	-	WHRW24
Base-Fix	30cm (1ft)	1	WHRB03-D	WHRB03-B
	60cm (2ft)	2	WHRB06-D	WHRB06-B
	120cm (4ft)	2	WHRB12-D	WHRB12-B
	180cm (6ft)	3	WHRB18-D	WHRB18-B
	240cm (8ft)	3	WHRB24-D	WHRB24-B
Concrete-In	30cm (1ft)	1	WHRC03-D	WHRC03-B
	60cm (2ft)	2	WHRC06-D	WHRC06-B
	120cm (4ft)	2	WHRC12-D	WHRC12-B
	180cm (6ft)	3	WHRC18-D	WHRC18-B
	240cm (8ft)	3	WHRC24-D	WHRC24-B
Face-Fix	30cm (1ft)	1	WHRF03-D	WHRF03-B
	60cm (2ft)	2	WHRF06-D	WHRF06-B
	120cm (4ft)	2	WHRF12-D	WHRF12-B
	180cm (6ft)	3	WHRF18-D	WHRF18-B
	240cm (8ft)	3	WHRF24-D	WHRF24-B

See next page for components and bulk packs

NEW Welcome® - modular ramp & step system

NEW Welcome® - Standalone Handrail Kits

Components and bulk packs






Components (includes all assembly fixings)		Code:	Bulk Pack (Code Suffix)
	Handrails		
	30cm (1ft)*	WHR1	10
	60cm (2ft)*	WHR2	10
	120cm (4ft)*	WHR4	20
	180cm (6ft)*	WHR6	20
	240cm (8ft)*	WHR8	5
	Handrail Brackets		
	Wall-mount Bracket Running (along wall)	WHBRUN	40
	Wall -mount Bracket Stop (handrail end onto wall)	WHBSTOP	20
	Bracket for upright (top/mid-rail)	WHBRKT	40
	Bracket for uprighty (mid-rail for steps)	WHBMIDS	20
	Upright*	WHUP	20
	Mounting Type		
	Base-fix	WHBASE	20
	Concrete-in	WHCONC	20
	Face-fix	WHFACE	20
	Bow End*	WRBE	4








Components (includes all assembly fixings)	Code:	Bulk Pack (Code Suffix)
---	-------	----------------------------

Connectors

	Elbow (0 - 90 deg.)	WHELBOW	20
	Straight (rigid)	WHCONN	20
	Telescopic Handrail Extension/Connector* 60cm (24ins)	WHTE2	10

Trims

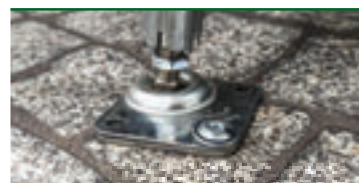
	Handrail end cap	WHEND	40
	Bracket Adaptor for Bow End or Telescopic Handrail Extension/Connector	WHBADT35	

Colour Code Combination		*Code Suffix
Original Graphite		No suffix
Original Graphite with Safety Yellow handrails		-Y
Garden Green		-G
Heritage Brown		-B



Touch-Up Aerosol 400ml

Original Graphite	WRTUA	6
Garden Green	WRTUA-G	6
Heritage Brown	WRTUA-B	6
Safety Yellow	WRTUA-Y	6



Low/Flush Head Fixings - Added to the range by popular demand. These proven fixings are great for Standalone Handrails and for NEW Welcome® Ramps too. (Require expansion plugs for concrete - not supplied)

Size/Driver Required	Length	Code	Pack Size
6mm TX30 (For e.g. wall-mount brackets etc.)	40mm long	WHTX640	100
	70mm long	WHTX670	100
8mm TX40 (For e.g. base-fix and face-fix brackets etc.)	40mm long	WHTX840	50
	70mm long	WHTX870	50
	90mm long	WHTX890	50

*Colour options available - use suffix. Bulk Packs available for Original Graphite colour



**Fast one-person
install**



**Easy to specify
and order**



100% modular



**Same-day
dispatch**



rampCENTRE[®] SRS Ramp[™]

Modular ramp system

The SRS modular ramp system has been carefully designed from modular and adjustable components. This durable system is easy to select, specify and install and gives endless configurations with a superb end result.



Ideally suited to public access and corporate applications, this galvanised steel ramp system is exceptionally adaptable, with many useful options available.

Your benefits:

- ▶ Approved Building Regulations Document M and K compliant
- ▶ Very rugged, high capacity construction
- ▶ Extremely adaptable, with many options available
- ▶ Order in kits for simple, effective purchasing



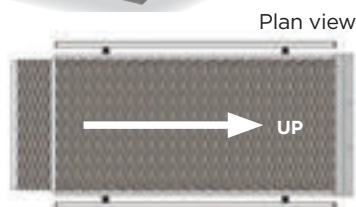
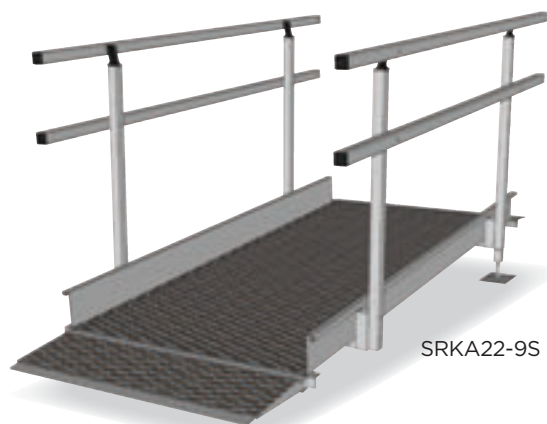
“Extremely strong and adaptable, in three widths and up to 1.5m high”



SRS Ramp™ -Kits

These kits include all the components required for the Regular 3ft/90cm width system configurations shown, and are designed to resolve the most common applications. Should you require the Wide 4ft/120cm width system, or the Extra-wide 5ft/150cm width system or any other configurations, please contact us.

SRS Kit A – Ramp only (Regular 3ft/90cm System Width)



Often used to provide access to an existing platform or step

Kit includes: lead-in ramp, ramp module(s), 13cm aluminium doorplate, height-adjustable legs, handrails (if specified) and all assembly fixings

Key Product Information

Ramp Length*	Code	
	With Handrails	Without Handrails
170cm (5ft 7ins)	SRKA17-9S	SRKA17-9
224cm (7ft 4ins)	SRKA22-9S	SRKA22-9
265cm (8ft 8ins)	SRKA27-9S	SRKA27-9
306cm (10ft)	SRKA31-9S	SRKA31-9
360cm (11ft 10ins)	SRKA36-9S	SRKA36-9
415cm (13ft 7ins)	SRKA42-9S	SRKA42-9
456cm (15ft)	SRKA46-9S	SRKA46-9
496cm (16ft 3ins)	SRKA50-9S	SRKA50-9
551cm (18ft 1ins)	SRKA55-9S	SRKA55-9
605cm (19ft 10ins)	SRKA61-9S	SRKA61-9

*Length includes lead-in ramp but not doorplate

SRS Kit B – Ramp and Platform (Regular 3ft/90cm System Width)

A very popular installation layout, complying with the requirements for a resting platform at the top of a ramp. The 110cm square platform can be used in both straight-through and turning configurations.

Kit includes: 110 x 110cm platform, lead-in ramp, ramp module(s), 13cm aluminium doorplate, height-adjustable legs, handrails (if specified) and all assembly fixings



Key Product Information

Ramp Length*	Length Including Platform*	Code	
		With Handrails	Without Handrails
170cm (5ft 7ins)	280cm (9ft 2ins)	SRKB17-9S	SRKB17-9
224cm (7ft 4ins)	334cm (10ft 11ins)	SRKB22-9S	SRKB22-9
265cm (8ft 8ins)	375cm (12ft 4ins)	SRKB27-9S	SRKB27-9
306cm (10ft)	416cm (13ft 8ins)	SRKB31-9S	SRKB31-9
360cm (11ft 10ins)	470cm (15ft 5ins)	SRKB36-9S	SRKB36-9
415cm (13ft 7ins)	525cm (17ft 2ins)	SRKB42-9S	SRKB42-9
456cm (15ft)	576cm (18ft 6ins)	SRKB46-9S	SRKB46-9
496cm (16ft 3ins)	606cm (19ft 11ins)	SRKB50-9S	SRKB50-9
551cm (18ft 1ins)	661cm (21ft 8ins)	SRKB55-9S	SRKB55-9
605cm (19ft 10ins)	715cm (23ft 5ins)	SRKB61-9S	SRKB61-9

* Length includes lead-in ramp but not doorplate

SRS Ramp™ -Components

In addition to the complete kits on the previous page, these components can be used to modify or build a ramp system to your desired specification, and include the fixings required for assembly.

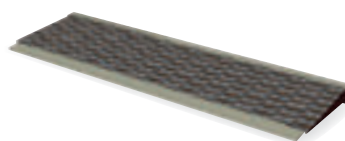
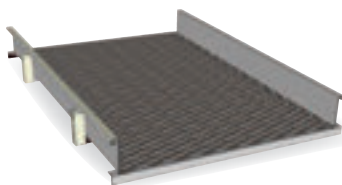
System Selection Guide

Remember, we're happy to help at any stage, so don't hesitate to contact us on our technical support and sales helpline. The following points must be considered with any system ordered:

- Every ramp system starts with a **Lead-in Ramp** from floor level
- Each ramp module requires 2 **Telescopic Legs** (except where connected directly to a platform)
- Handrails** are ordered separately for ramps and platforms
- At the top of any system, a **Doorplate** is used to overlap onto a threshold or step to ensure there is no gap



Ramp Components



Ramp Modules

Code	Size cm (ins)
------	---------------

Regular 3ft/90cm System

SR14-9	136 (54)
SR19-9	190 (75)
SR23-9	231 (91)

Wide 4ft/120cm System

SR14-13	136 (54)
SR19-13	190 (75)
SR23-13	231 (91)

Extra-Wide 5ft/150cm System

SR14-15	136 (54)
SR19-15	190 (75)
SR23-15	231 (91)

Handrails

(code is for 1 side only)

Code	Length cm (ins)
------	-----------------

SRH14-S	136 (54)
SRH19-S	190 (75)
SRH23-S	231 (91)



Bowend

For Standard Handrail (code is for 1 side only)

Code	Size cm (ins)
SRH-DE	30 x 30 (12 x 12)

Lead-in Ramp

Code	Size cm (ins)
------	---------------

Regular 3ft/90cm System

SRLI3-9	96 x 34 (38 x 13)
---------	-------------------

Wide 4ft/120cm System

SRLI3-13	130 x 30 (51 x 12)
----------	--------------------

Extra-Wide 5ft/150cm System

SRLI3-15	150 x 30 (69 x 12)
----------	--------------------

Telescopic Leg

(code is for 1 leg only)

Code	Size cm (ins)
SRLT	up to <100 (39) high

Doorplate

Aluminium for easy onsite trimming

Code	Size cm (ins)
------	---------------

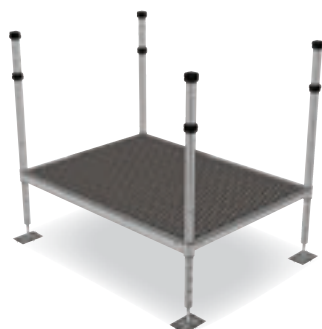
Regular 3ft/90cm System

SRDP1-9	96 x 13 (38 x 5)
SRDP2-9	96 x 22 (38 x 9)
SRDP5-9	96 x 47 (38 x 19)

Wide 4ft/120cm and Extra-Wide 5ft/150cm Systems

SRDP2-13	150 x 22 (59 x 9)
----------	-------------------

Platform Components



Doorplate

Aluminium for easy onsite trimming

Code	Size cm (ins)
------	---------------

Min. 110cm width platform

SRDP1-9	96 x 13 (38 x 5)
SRDP2-9	96 x 22 (38 x 9)
SRDP5-9	96 x 47 (38 x 19)

Min. 150cm width platform

SRDP2-13	150 x 22 (59 x 9)
----------	-------------------

Platform Spacer/Joiner

Join platforms for 'switch-back' ramps to provide a gap between handrails of the adjacent ramps.

Code	
------	--

SRP6-11	For 110cm platform sides
SRP6-15	For 150cm platform sides

Platform Joining Kit

Join platforms where no spacer is required.

Code	
SRPJ	

Platform Modules

110cm side or wider accepts Regular system ramps. 150cm side or wider accepts Wide and Extra-Wide system ramps.

Code	Size cm (ins)	Includes telescopic legs and uprights for railings
SRP11-11	110 x 110 (43 x 43)	
SRP11-15	110 x 150 (43 x 59)	
SRP15-15	150 x 150 (59 x 59)	
SRP15-19	150 x 190 (59 x 75)	

Platform Handrails

For one side only; includes toe-plate

Code	Length cm (ins)
SRPH4-S	40 (16) incl. handrail upright
SRPH8-S	80 (32) incl. handrail upright
SRPH11-S	110 (43)
SRPH15-S	150 (59)
SRPH19-S	190 (75)

Platform Components

Bolt-Down Foot

For extra security and permanence

Code (each)

SRBDF

SRS Leg Bearer

To spread the load where required.
(Shown with SRBDF)

Code

Size cm (ins)

WRLBS

15 x 3.8 x 30 (6 x 1.6 x 18)

Low Mount Platform Kit (Set of 4)

For heights down to 10cm (4ins)
(not illustrated)

Code

SRLPK



Ask About

Gate Unit

2 sizes of gate unit for edge protection.

Step Kits

Steps provide easy access for all users - supplied with handrails.

Triangular Platform Modules

Available in 2 sizes and supplied with handrails, these are excellent for when space is limited and the ramp needs to change direction slightly.

SRS Tool Kit

Code

SRSTK

SRS Fixings and Spares Kit

Code

SRSK

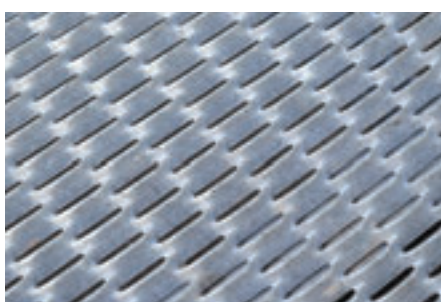


Ask About



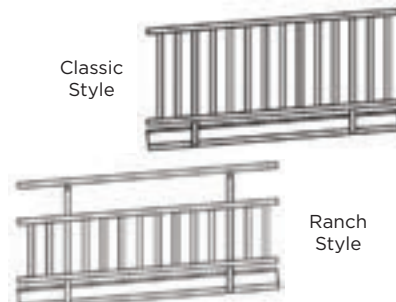
Extra-Wide 5ft/150cm System

For public/communal access



Closed Mesh Surface

For all shoe types including stiletto heels



Baluster Handrail Options

For appearance and child safety



Custom Colours

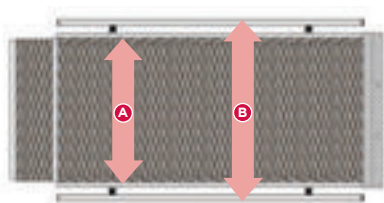
For corporate or designer styling



Application support

For the very best solution

Swift Ramp System Key Dimensions



Regular 3ft/90cm System

A - Internal Width - 90cm (35ins)

B - External Width - 110cm (43ins)

Wide 4ft/120cm System

A - Internal Width - 130cm (51ins)

B - External Width - 150cm (59ins)

Extra-Wide 5ft/150cm System

A - Internal Width - 143cm (56.3ins)

B - External Width - 159cm (62.6ins)

C - Upper Rail Height - 90cm (35ins)

D - Mid Rail Height - 64cm (25ins)



Capacity:* 400kg

*Each 2m of system

E - Kerb Height - 12cm (5ins)

F - Max. Height (Standard System): 90cm (35.5ins)
(Ask about heights up to 1.5m (59ins))
Min. Height 20cm (8ins)
(Min. platform height is 10cm (4ins) with option SRLPK)

Portable Folding Aluminium Ramp



- ▶ Made in Britain for improved quality and reduced carbon emissions
- ▶ Increased availability; avoiding long distance shipping delays
- ▶ Strong but lightweight with full-length hinge
- ▶ Budget-friendly and easy-to-use, overcoming everyday obstacles
- ▶ Suited to wheelchairs, scooters, rollators and pedestrians



Code	Length	Weight	Capacity	Stored Dimensions L x W x D
Width: 72cm (28.3ins)				
MFR06	60cm (2ft)	4.4kg (9.7lbs)	300kg (47st)	60 x 37 x 7.6cm (23.2 x 14.6 x 3ins)
MFR09	90cm (3ft)	6.8kg (15lbs)	300kg (47st)	90 x 37 x 7.6cm (35.4 x 14.6 x 3ins)
MFR12	120cm (4ft)	9.1kg (20lbs)	300kg (47st)	120 x 37 x 8.6cm (47.2 x 14.6 x 3.4ins)
MFR15	150cm (5ft)	11.5kg (25.3lbs)	300kg (47st)	150 x 37 x 8.6cm (59.1 x 14.6 x 3.4ins)
MFR18	180cm (6ft)	13.9kg (30.6lbs)	300kg (47st)	180 x 37 x 8.6cm (70.7 x 14.6 x 3.4ins)
MFR21	210cm (7ft)	16.3kg (35.9lbs)	275kg (43st)	210 x 37 x 8.6cm (82.7 x 14.6 x 3.4ins)
MFR24	240cm (8ft)	18.7kg (41.1lbs)	250kg (39st)	240 x 37 x 8.6cm (94.5 x 14.6 x 3.4ins)

Adjustable Wedge Ramp



NEW

Your benefits:

- ▶ New patented design
- ▶ Quick and easy adjustment in 1 inch (2.5cm) increments
- ▶ Unobtrusive design with high grip surface
- ▶ Great for indoor and outdoor use

Code	Min. Height	Max. Height	Length	Capacity	Weight
Width: 74cm (29ins)					
MAW10	5cm (2ins)	10cm (4ins)	43cm (16.9ins)	275kg (43st)	6.5Kg (14.3lbs)

Adjust height for thresholds from 5cm to 10cm high



Telescopic Channel Ramps

Code (Pair)	Min. Length	Max. Length	Capacity (Pair)	Weight (Each Half)
Width: 19cm (7.5ins)				
MTR12	75cm (2.5ft)	120cm (4ft)	300kg (47st)	2.5kg (5.5lbs)
MTR15	83cm (2.7ft)	150cm (5ft)	300kg (47st)	3.3kg (7.3lbs)
MTR18	107cm (3.5ft)	180cm (6ft)	300kg (47st)	3.9kg (8.6lbs)
MTR21	120cm (4ft)	210cm (7ft)	300kg (47st)	4.1kg (9.0lbs)

Made in China IMPORTANT: These products may be subject to changes in source, specification, appearance and packaging. Images may not match product supplied. Limited 12 month warranty



Contract Kerb Type Threshold Ramp

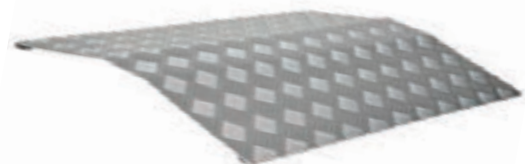
Code	Length	Max. Recom. Height	Capacity	Weight
Width: 70cm (27.5ins)				
MMT5	50cm (20ins)	10cm (3.9ins)	300kg (47st)	3kg (6.6lbs)



Contract Bridge Type Threshold Ramp

Code	Length	Height	Capacity*	Weight
Width: 70cm (27.5ins)				
MBR4	50cm (19.7ins)	4cm (1.6ins)	300kg (47st)	3kg (6.6lbs)
MBR6	58cm (22.8ins)	6cm (2.4ins)	250kg (39.4st)	3.3kg (7.3lbs)
MBR8	75cm (29.5ins)	8cm (3.1ins)	250kg (39.4st)	5.4kg (11.9lbs)
MBR10	100cm (39ins)	10cm (3.9ins)	250kg (39.4st)	7.6kg (16.8lbs)

*Capacity assumes ramp rests on threshold

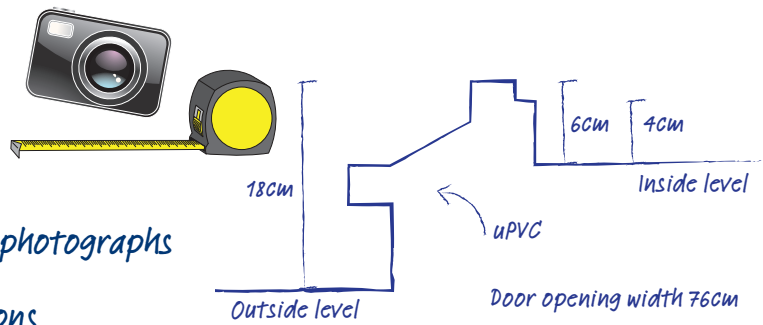


Installed Ramp Gallery



TOP TIPS!

1. Refer to Ramp Specifier Guide (p4/5)
2. Always take close-up and stand-back photographs
3. Make a rough sketch and add dimensions



Most of the products listed carry a comprehensive 2-year warranty for normal use, conditions apply. Use other than published/intended will void the warranty.



Enable Access, AccessCentre, Aerolight, ExitMaster, RampCentre, Permaramp, The Butterfly Ramp and Metro Mobility are registered trademarks of Enable Access (Holdings) Ltd. Welcome, Rollout-Trackway, Doorline, Ultralight, High Rise and Quickrails are trademarks of Enable Access (Holdings) Ltd. These and all other product names, codes and images must only be used in reference to products supplied by Enable Access. We undertake a policy of continual review and research, which may lead to changes in product appearance and specification. Information is given for guidance only: customers take ultimate responsibility for purchasing decisions. Aerolight ramps are designed and optimised for disability/mobility type use - for other applications, please speak to a RampCentre product advisor. All dimensions, weights and conversions are approximate for your easy reference only and specific risk assessments (including all manual handling assessment and product use issues) should be carried out prior to the use of the equipment supplied. Stated capacities apply for the combined weight of mobility devices and/or passenger/attendant. For technical help and details of your nearest stockist phone 020 8275 0375. © Copyright Enable Access Ltd.



Ask for
copies of our
handy A5 Ramp
Guide flyer for
your colleagues
and clients.

Includes all main RampCentre ranges
including ramp sizes and gradient information.
Label space for your details

Leading **Ramp** and **Access innovation**



Helping you
“Get Ramps Right!”



T. +44 (0)20 8275 0375 E. sales@enable-access.com

www.enable-access.com

Enable Access, Unit R, Cherrycourt Way, Leighton Buzzard, LU7 4UH

Enable Access Ltd Company Registration Number 10945974 | TARD2023