

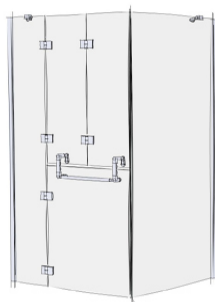
# Opulence

## Full Height Glass Shower Door Fitting Instructions

### Corner Shower Door Options

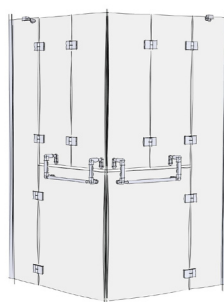
#### BI-FOLD DOOR & A FIXED PANEL

Left hand door, right hand panel illustrated



#### TWIN BI-FOLDING DOORS

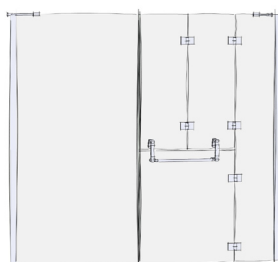
Not handed illustrated



### Inline Shower Door Options

#### BI-FOLD DOOR & A FIXED PANEL

Left hand door, right hand panel illustrated



### Read before installation:

PLEASE READ ALL INSTRUCTIONS CAREFULLY & LEAVE WITH THE END USER.

INSTRUCTIONS ARE PREPARED TO HELP WITH THE ASSEMBLY & INSTALLATION OF HALF HEIGHT SHOWER DOORS TO SUIT A CORNER OR INLINE / ALCOVE SETTING.

CAREFULLY UNPACK THE PRODUCT & ENSURE YOU DO NOT ACCIDENTALLY DISPOSE OF ANY PARTS.

**CHECK THAT THE SHOWER AREA / SHOWER TRAY WHERE THE DOORS ARE TO BE INSTALLED IS LEVEL.**

ALL SEALS ARE PRE-APPLIED AND SHOULD NOT BE REMOVED DURING INSTALLATION.

PROTECT SHOWER TRAY SURFACES AND COVER ANY WASTES TO PREVENT LOSS OF SMALL ITEMS & TO PREVENT DEBRIS ENTERING THE PIPEWORK.

USE THE OUTER CARTON TO PROTECT THE FLOOR AND / OR WALL DURING ASSEMBLY IF NECESSARY.

ALLOW SUITABLE CURING TIME FOR SILICONE SEALANT. THIS COULD BE 24 HOURS DEPENDING UPON THE VARIETY USED.

IN THE CASE OF ANY DIFFICULTIES BEING ENCOUNTERED, PLEASE DO NOT HESITATE TO CONTACT OUR TECHNICAL DEPARTMENT ON **0845 402 9924**.

**DUE TO THE NATURE OF ALL GLASS SHOWER DOORS, WE CANNOT GUARANTEE THEY ARE 100% WATERTIGHT.**

**WE DO NOT APPROVE THE USE OF POWER SHOWERS WITH EASY ACCESS SHOWER DOORS AND SHOWER TRAYS.**

**WE RECOMMEND TWO PEOPLE ASSEMBLE AND INSTALL FULL HEIGHT GLASS DOORS.**



### EASY CLEAN GLASS

Opulence glass shower enclosures are coated with an Easy Clean coating. The coating is an effective protection for easy to clean glass.

To optimize the durability of the Easy Clean protection, we recommend the following:

- Regularly rinse off the water & soap deposits by drying the surface with a squeegee or cloth if necessary.
- Clean the glass panels weekly (depending on the use & the hardness of the water).
- **Clean glass with warm soapy water or water containing a small amount of washing up liquid.** Rinse thoroughly & wipe with a soft, non-abrasive cloth.

**DO NOT USE** abrasive products, strong or concentrated acids, alkalis, chlorine or other abrasive cleaning products such as household bleach, disinfectant, bathroom limescale remover / mousse as they may discolour or damage the coating and void the warranty.

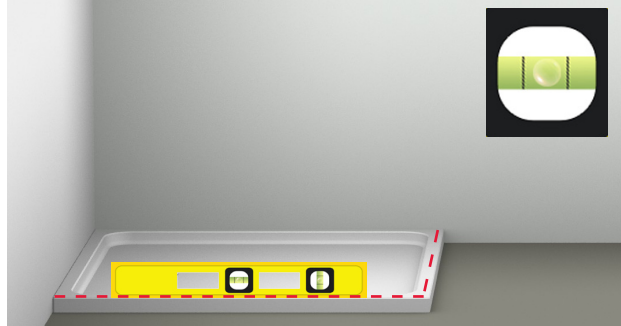


**Technical Helpline: 0845 402 9924**

Revision 1

from  
**CONTOUR**  
built-in independence

## 1: CHECK THE LEVEL!



Before you start the installation, **ENSURE** that the shower area / shower tray / wetfloor former area where the doors are to fitted is level, from side to side and front to back, using a spirit level.



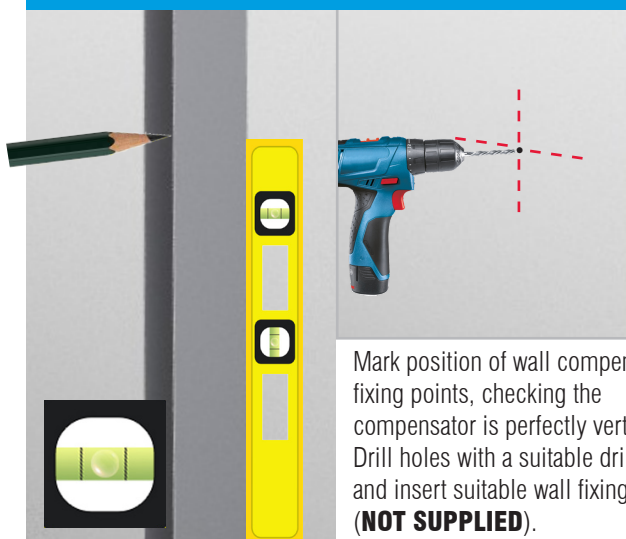
**TIP:** IF YOU ARE INSTALLING A FIXED PANEL WITH A BI-FOLD DOOR WE RECOMMEND INSTALLING THE FIXED PANEL FIRST.

## 2: COMPENSATOR STYLES



Place compensator against the wall ensuring that it rests on the flat area of the shower tray / wetfloor former.

## 3: POSITION COMPENSATOR



Mark position of wall compensator fixing points, checking the compensator is perfectly vertical. Drill holes with a suitable drill bit and insert suitable wall fixings. **(NOT SUPPLIED)**.

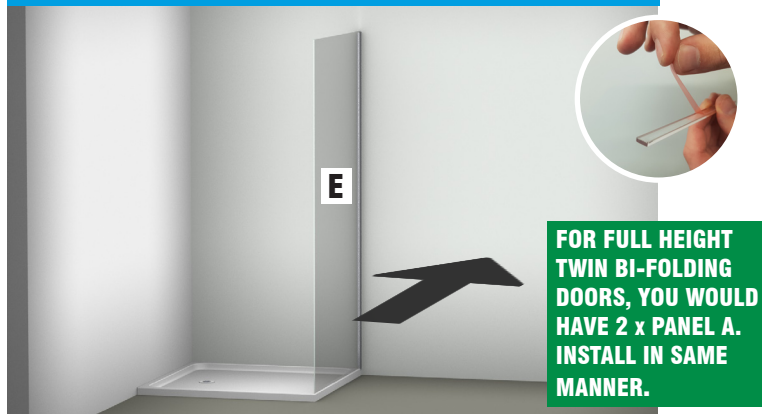
## 4: FIX COMPENSATOR



Run a bead of clear silicone bathroom sealant down the narrow face, for the full length of the outer compensator and then screw to the wall using suitable screws **(NOT SUPPLIED)**. Wipe **ANY** excess silicone from compensator/wall joint.

**FOLLOW THE MANUFACTURERS GUIDELINES WHEN USING SILICONE SEALANT.**

## 5: LOCATE PANEL "E"

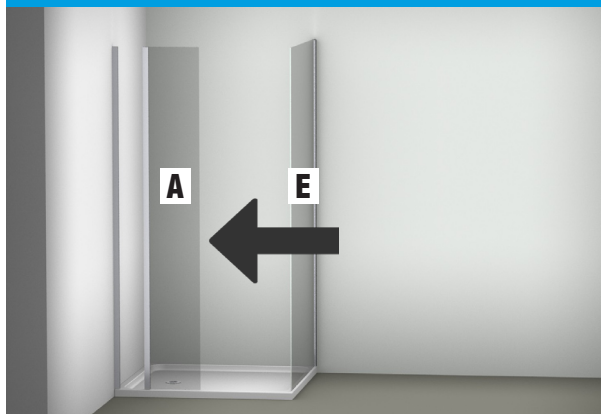


Slide **"PANEL E"** into the wall compensator. An optional self adhesive protective strip is supplied for applying to the bottom edge of the glass panels, see *inset above*. We **recommend** using this on a tiled floor setting. **DO NOT DRILL FIXING HOLES INTO COMPENSATOR INNER YET.**



**DO NOT REMOVE PANEL STICKERS UNTIL DOORS ARE FULLY ASSEMBLED.**

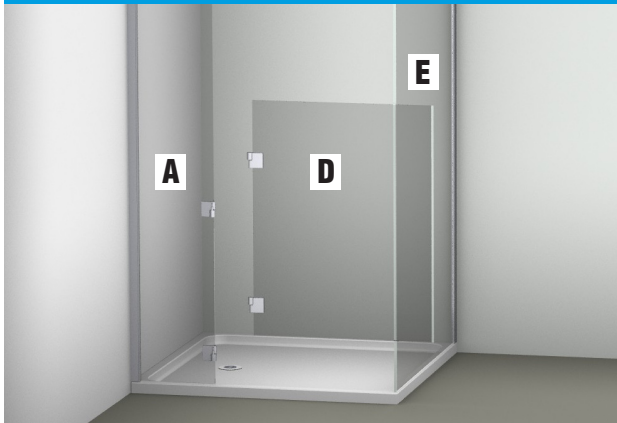
## 6: LOCATE PANEL "A"



**REPEAT STEPS 2 - 3 TO FIX THE OPPOSITE COMPENSATOR**

With the other compensator attached to the wall, slide **"PANEL A"** into the wall compensator **DO NOT DRILL FIXING HOLES INTO COMPENSATOR INNER YET.**

## 7: LOCATE PANEL "D"



Offer **"PANEL D"** to **"PANEL A"**.

The female hinge section of **"PANEL D"** locates onto the male hinge section of **"PANEL A"**.

**DO NOT TIGHTEN HINGE GRUBSCREWS YET.**

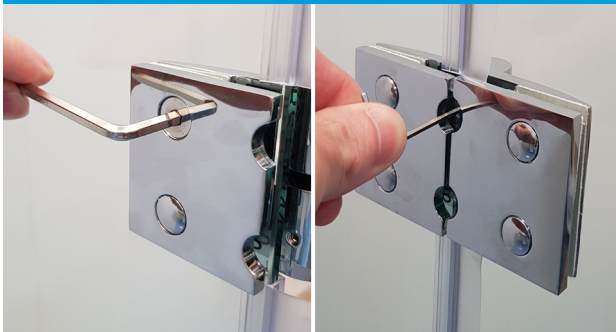
## 8: DOOR HINGE



The hinge attached to **"PANEL A"** will have a spigot ready to accept **"PANEL D"**, *above left*. Ensure the spigot part of the hinge is on the outer side of the door, with the receiving pin pointing upwards, to ensure the rise & fall hinges open outward.

Connect **"PANEL D"** to **"PANEL A"** with a downward motion, gently pushing down until the top of the glass panel is level and the hinge is fully seated in the middle, *see above right*.

## 9: TIGHTEN ALL SCREWS



With **"PANEL D"** in the closed position, use a 5mm allen key to tighten the 4 x allen screws on each hinge, *see above left*. Attach the 4 x chrome cover caps to cover the screw heads.

Using a 3mm allen key tighten the hinges top grub screw. This will secure **"PANEL D"** in position, *see above right*.

**You may find it easiest to do this whilst inside the shower area.**

## 10: 45° STABILISER BAR



Clip the stabiliser bar onto **"PANEL E"**

Mark the fixing point onto the wall around the wall lug.

Unscrew the wall lug from the stabiliser bar with an allen key and use it to mark the centre point for the wall fixing. Drill a hole with a suitable drill bit and insert suitable wall fixings. (**NOT SUPPLIED**).

## 11: FIX STABILISER BAR

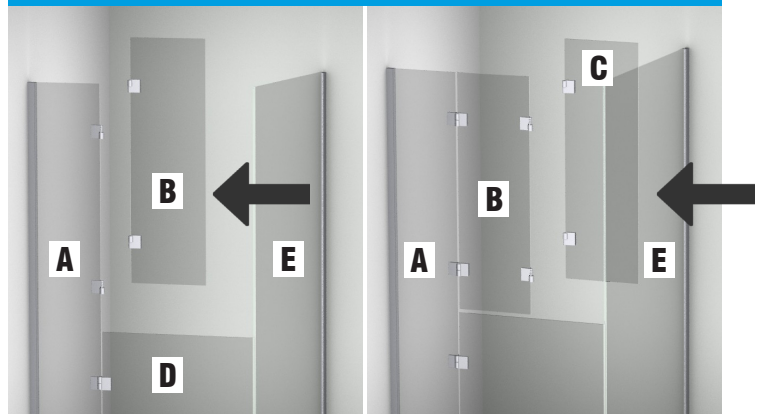


Take the wall lug from the stabiliser bar and using suitable wall fixings (**NOT SUPPLIED**) screw securely to the wall, as shown above.

Re-attach the stabiliser bar to the wall lug & **"PANEL E"** as shown in Step 10.

**REPEAT STEPS 10 - 11 TO ATTACH THE STABILISER BRACKET TO "PANEL A".**

## 12: LOCATE PANEL "B" & "C"



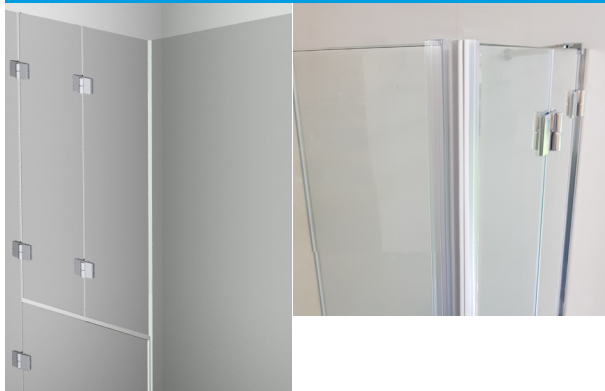
**REPEAT STEP 7**

Connect **"PANEL B"** to **"PANEL A"** and **"PANEL C"** to **"PANEL B"** as described previously.

You have now assembled one section of your door.  
**DO NOT FULLY TIGHTEN ANY SCREWS YET.**



## 13: THERE SHOULD BE NO GAPS!



With the doors assembled and in the closed position, **ENSURE** that the magnetic profiles where the door(s) / fixed panels meet at the corner are parallel and the magnetic profiles come together for the full height of the doors.

**NOW TIGHTEN ALL GRUBSCREWS & ALLEN SCREWS AS DESCRIBED IN STEP 9. YOU WILL NEED TO BE INSIDE THE SHOWER AREA.**

## 15: FIX TOWEL RAIL



Offer the towel rail and internal door handle up to **"PANEL D"**. Plastic spacers are supplied to protect the glass when the rails / handles are attached, *see above right inset*.



The internal handle should be fitted closest to the corner for easy useability (below **PANEL "C"**). Connect the handle to the rail with the screw supplied. Repeat for the opposite end of the towel, but use the 'retaining cover', *see above inset*.

## 17: HANDLE OPERATION



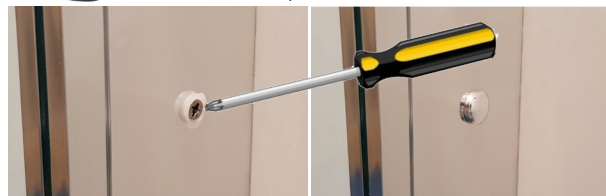
The external handles are designed to rotate 180° to allow the upper & lower doors to open independently and so that they don't clash when **"PANEL B & C"** are folded back against each other.



## 14: DRILL COMPENSATOR

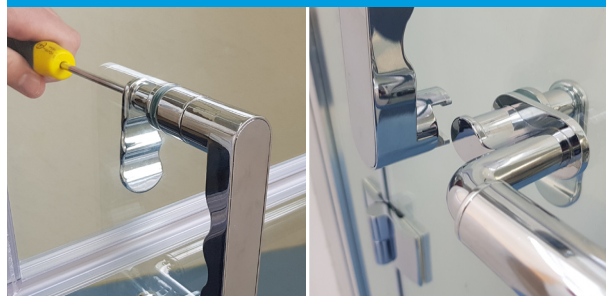


Drill the **"PANEL A"** compensators with a 3mm drill bit through the pre-drilled 4.5mm hole on the compensator located on the inside face (inside of the shower area).



Using the screws supplied in **Pack "A"** securely fix both panels to the wall compensators and conceal using the supplied chrome cover caps.

## 16: FIX DOOR HANDLE



Offer an external handle to the outside of **PANEL "C"**. Attach the remaining internal handle to the reverse of **PANEL "C"**

The bottom of the handle slots over the stud on the towel rail, *see above right*.

Repeat for the opposite end of the towel for **"PANEL B"**, but use the 'retaining cover' shown in Step 15.



Apply the supplied chrome cover caps to hide all the screw heads, *see right*.

## 18: SEAL WITH SILICONE



**TIP:** On the outside of the panel silicone along the compensator and the glass. On the inside silicone along the **glass only**.

Silicone joint between floor / shower tray both **"PANEL A / E"**.

Allow suitable cure time for silicone (this may be 24 hours depending on the variety use). **FOLLOW THE MANUFACTURERS GUIDELINES WHEN USING SILICONE SEALANT.**