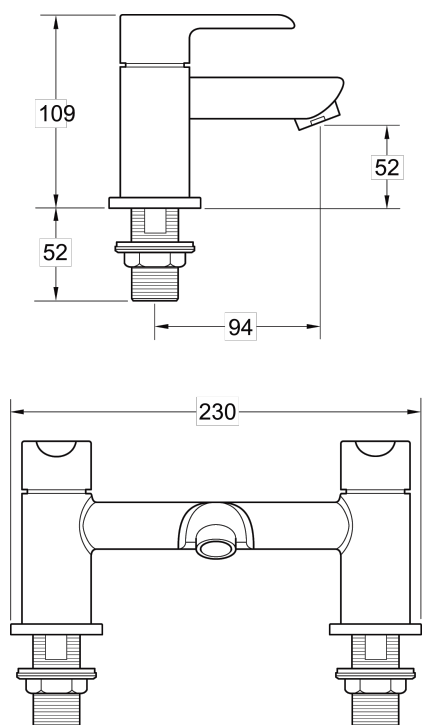


KEA BATH FILLER



CONSTRUCTION: Brass

CARTRIDGE/VALVE TYPE: Ceramic Disc

SUPPLY: Suitable for all plumbing systems

INLET CONNECTIONS: 3/4" BSP

WORKING PRESSURES: 0.3 - 5.0 bar

OPERATION: Separate Flow And Temperature Controls

- 1/4 turn ceramic handles ensure a smooth operation
- Supplied with metal backnuts
- Products which are easy to use by all the family

KEBFCEPK

Chrome

Open Outlet Flow (Bar - l/min)

BAR	0.3	0.5	1.0	2.0	3.0	4.0	5.0
SPOUT FLOW	19.8	26.2	37.8	54.2	66.8	N/A	N/A



2012718



2012331



Please Note: Flow rate will be dictated by installation configurations.
Please ensure to check the appropriate flow restrictor information if applicable.

*Please refer to website for full warranty details.