

# PURUS GRATES FOR MINI SERIES GULLIES

Square and round grates in stainless steel

All grates are suitable for installation with Purus' Minimax 50, Minimax Two Part, Mini Brage 50 and Mini Brage 110 floor gullies

## PK155 & PK200 grates

Patterned stainless steel grates for tiled floors

Floating style - these can be adjusted in height to be flush with your tiles



**Classic**

155x155mm: 7138359  
200x200mm: 7138377



**Art Deco**

155x155mm: 7138358  
200x200mm: 7138374



**Drop**

155x155mm: 7138360  
200x200mm: 7138376



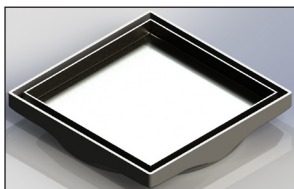
**Wave**

155x155mm: 7138361  
200x200mm: 7138375

## Tile adapter grates

130x130mm stainless steel grates with a plastic adapter piece for tiled floors

The adapter piece slots into the gully and the square part is rotated to match your tile position



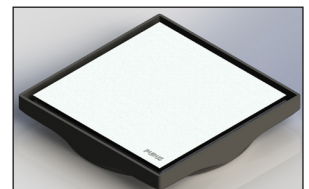
**Tile Insert**

Product code: 52728



**Twist**

Product code: 52729



**Platinum**

Product code: 52730

## Round grates for vinyl

130mm diameter stainless steel grates for vinyl floors



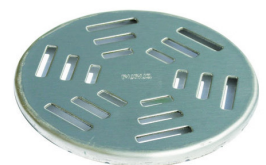
**Drop**

Product code: 7138392



**Wave (lockable)**

Product code: 7138394



**Art Deco**

Product code: 7138400

**Locks for Wave grate**

Product code: 7138426UK

**PURUS**

Purus Limited | Suite 5, Old Anglo House  
Mitton Street | Stourport-on-Severn  
Worcestershire | DY13 9AQ

Tel: 0113 289 3172  
info@purusgroup.com  
www.purusgroup.com