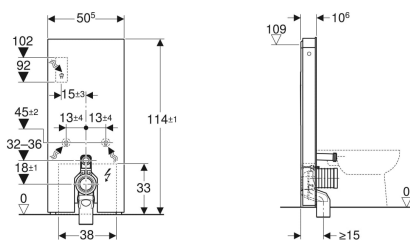


Geberit Monolith Plus sanitary module for floor-standing WC, 114 cm, stoneware front cladding



Example image



Application purposes

- For floor inlets
- For renovations, conversions and new buildings
- For wall inlets with an inlet height of 18 cm
- For floor-standing WCs with P-bend and water inlet height 32–36 cm above the floor (EN 33)
- For replacing floor-standing WCs with concealed cistern with maximum service opening height < 109 cm
- For replacing low-level exposed cisterns
- For replacing half-high level exposed cisterns
- For replacing floor-standing WCs with close-coupled exposed cistern
- For connecting Geberit AquaClean Tuma WC complete solution, floor-standing WC
- For replacing pressure flushing valves
- For connecting Geberit AquaClean WC enhancement solutions, with accessories
- For mounting on finished floors
- For installation in front of drywalls or solid walls

Characteristics

- Dual flush
- Soft-touch buttons for flush actuation
- Settings can only be changed with the Geberit Home App
- User detection range can be set
- Odour extraction with ceramic honey comb filter can be activated
- Odour extraction unit with run-on function
- Ceramic honeycomb filter for odour neutralisation can be replaced without tools
- Adjustable interval flush
- With ComfortLight
- Lighting mood infinitely adjustable from orientation light to daylight
- Light colour continuously adjustable from warm white to cool white

Scope of delivery

- Water supply connection set with 2 angle stop valves, 1/2"
- Flush bend extension 160 mm
- Connection bend made of PP, ø 90 mm
- Sleeve made of EPDM, ø 44 / 55 mm
- Adaptor socket made of PE-HD, ø 90 / 110 mm

- DALI-compatible control
- Operation with extra-low voltage, no mains voltage in cistern
- Mains connection with flexible three-core sheathed cable
- Water supply connection on the rear centre
- Water supply connection on the left/right possible with accessories
- Water supply connection on the bottom
- Compensation of dimensional tolerances possible
- Cistern, fully insulated against condensation
- Side cladding made of aluminium brushed
- Self-supporting

Technical data

Protection degree	IPX4
Protection class	I
Nominal voltage	100-240 V AC
Mains frequency	50-60 Hz
Operating voltage	12 V DC
Power consumption	15 W
Power consumption standby	≤ 0.5 W
Flow pressure	0.1-10 bar
Maximum operating temperature, water	25 °C
Flush volume, factory setting	6 and 3 l
Flush volume large, adjustment range	4-6 l
Flush volume small	3 l
Calculated flow rate	0.11 l/s
Minimum flow pressure for calculated flow rate	0.5 bar
Light colour	2200-4000 K

- Female socket for mains connection
- Power supply unit
- Fastening material
- Base cover
- Fastening material for drywall

Art. no.	Colour / surface	B	H	T	
131.233.JV.7	Front cladding: Stoneware concrete look Side cladding: aluminium	50.5 cm	114 cm	10.6 cm	New
131.233.00.7	Front cladding: Stoneware slate look Side cladding: black chrome aluminium	50.5 cm	114 cm	10.6 cm	New

Accessories

- Conversion set for Geberit AquaClean WC enhancement solutions
- Lateral water supply connection set for Geberit Monolith sanitary module for WC

- Geberit outlet mounting box
- Interface module 12 V for Geberit AquaClean Mera/Sela



-
- The colour and structure of natural products may vary