

TALIS EASY ACCESS BATH

FITTING AND OPERATION INSTRUCTIONS

STEP 1

(Please read these instructions through carefully before commencing assembly).

NOTICE TO INSTALLER

- 1) **ALWAYS FIT A THERMOSTATICALLY CONTROLLED WATER FILLING SYSTEM ON THIS PRODUCT.**
- 2) Take care when handling and avoid knocks or damage.
- 3) Ensure the bath is adequately protected if you need to stand in it.
- 4) Do not place burning cigarettes in or on the bath
- 5) Do not allow paint strippers, spirits, dry cleaning agents, cleansers or bleaches to come into contact with the surface.
- 6) If a blow lamp is used, the flame must be kept well away from the product.
- 7) Use a silicon sealant to ensure a watertight joint between bath rim and wall.
- 8) When making joints to the waste fitting use only the washers provided and an approved sealing compound.
DO NOT use boss white, linseed oil putty or similar oil based compounds.
Avoid excessive force when tightening plastic nuts.

ASSEMBLY INSTRUCTIONS

Every care has been taken to ensure your bath arrives in perfect condition. Before installation, please remove protective packaging from the bath and inspect. The manufacturer will not accept responsibility for the installation of faulty or damaged products. We recommend the bath be recovered for protection during installation.

Your leg set will contain the following items:

- | | |
|--------------------------|------------------------------------|
| A) 2 off channel legs | B) 8 off 5/8" No.8 screws |
| C) 4 off adjustable feet | D) 8 off nuts to suit feet threads |
- 1) Place bath legs across the base of the bath approx. 130-150mm from the ends of the encapsulated baseboard.
 - 2) Fix in place using the 5/8" screws provided.
 - 3) Apply one nut on each of the adjustable feet and secure each leg with the remaining nuts.

PRELIMINARY INSTALLATION

- 1) Ensure the floor is flat and level.
- 2) Position and level the bath, setting the height according to the bath panel supplied. Place two spirit levels across both ends of the bath to ensure both record the product being true, repeat either side of the door aperture. Failure to follow this practice can lead to door alignment/sealing problems.
- 3) Mark the feet and screw hole positions on the floor.
- 4) Scribe a line on the wall to the underside of the rim.

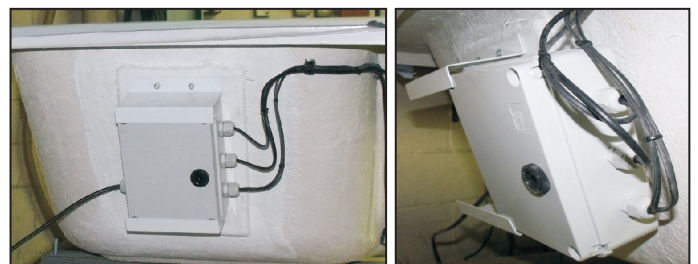
STEP 2

ELECTRICAL CONNECTION

WARNING: ALL ELECTRICAL INSTALLATION SHOULD BE PERFORMED BY A SUITABLE QUALIFIED ELECTRICIAN. THE SUPPLY MAY REQUIRE AN RDC WITH A 3AMP SWITCH SPUR (NOT SUPPLIED).

- 1) The control box is mounted on the end of the bath nearest to the door. Slide the box forward and out of the holding brackets. It is useful to rest the box on something as the cables are tied to the bath for security.
- 2) Unscrew 4 off securing bolts and remove lid from control box (take care when removing lid as the buzzer fitted to the lid is connected to the PCB).
- 3) Feed (isolated) mains supply cable through appropriate gland in box and connect Live, Neutral and Earth wires to appropriate terminals.
- 4) Ensure that both positive (+red) and negative (-black) leads are securely connected to the battery terminals.
- 5) Re-assemble box and secure back into mounting tray on bath.
- 6) Switch on main supply to product. Nb. Allow a minimum of 20 minutes power-on to provide a working charge to the battery.

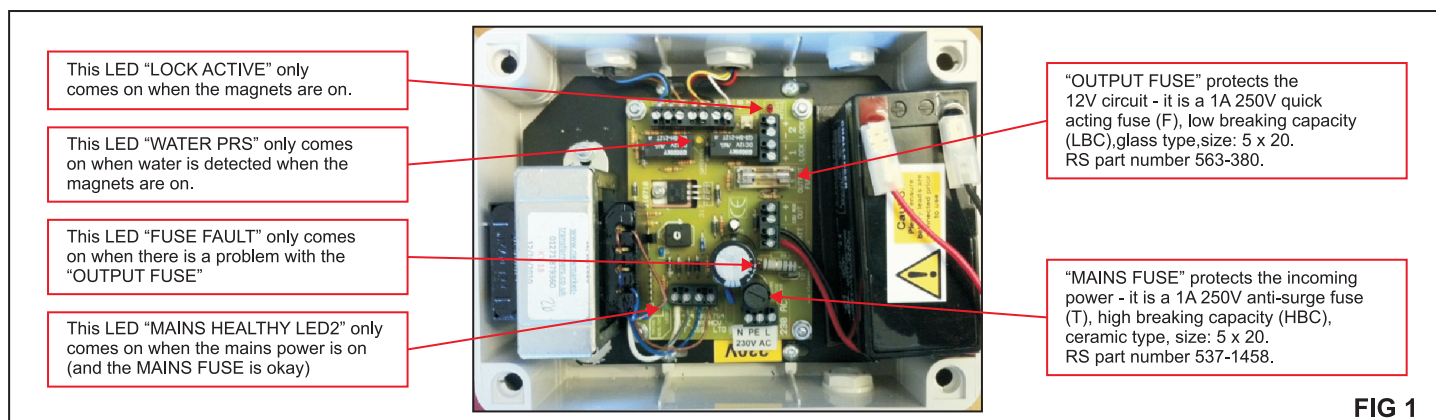
Please note it is critical the power supply to the bath is switched on at all times. Failure to do this can result in the battery draining and not providing a backup.



STEP 3

BATH FUNCTIONALITY/OPERATING SEQUENCE

- 1) Ensure power is switched on. Prior to test please make sure that bath and seal are dried and cleaned. Failure to clean the door seal can lead to water leakage.
- 2) Press the button to switch on the magnetic door lock, it will latch into the down position. The light will come on indicating that the magnets are switched on. The door can now be closed. Please note - hot water will soften the seal and reduce the resistance of the door over time and reduce the degree of effort required above.
- 3) Fill the bath with water up to the threshold of the door opening. Press the button again which will spring back up. The light will remain on as the water sensor has detected water in the bath, and will not allow the magnets to switch off.
- 4) Switch off the mains power. The buzzer will sound and the light on the button will switch off to indicate that the power has failed. The door will remain closed as it is powered by the battery backup. This backup will maintain the power for over 1 hour enabling the bath to remain operational during a power cut.
- 5) Switch the mains power back on. The buzzer will stop and the light will come back on. Allow the water to drain and the door will open when the water level is below the sensor.
- 6) The sequence can now be repeated but this time the bath can be fully filled to check the effectiveness of door seal. If any leaks are evident, drain bath and re-check the cleanliness of door seal. Re-test as required.



FINAL INSTALLATION

ONCE THE ELECTRICAL CONNECTIONS HAVE BEEN MADE AND THE SEQUENCE OF THE OPERATION CHECKED COMMENCE FITTING THE PRODUCT.

- 1) Remove the bath, and fit a softwood batten to the scribed line on the wall to act as additional support to the rim(s).
- 2) Apply a liberal amount of silicone sealant to the outer rim(s) of the bath, which will be adjacent to a wall. Reposition the bath ensuring that it is pushed firmly back to the wall(s) and that the feet are back in their original position.
- 3) Leave the bath until the silicone has completely cured, then complete the installation ensuring all fixings are secure.

SERVICING

To extend the service life of the battery backup unit - fully drain the supply once a year in the following manner:

- (a) Switch on power - activate sequence - close door - switch off power - alarm will sound (battery backup is working). Leave in this state for at least 3 hours.
- (b) Switch on the power again for at least 3 hours such that the battery will re-charge.
- (c) Always leave the door deactivated when not in use. The door button light should not be lit when not in use and door is open.

WATER LEVEL SENSOR ADJUSTMENT

During the service life of the product it may be necessary to adjust the sensitivity of the water level sensor, proceed as follows:

Using a flat head screwdriver adjust the black dial, turning anti-clockwise for less sensitivity and clockwise for more sensitivity. It is recommended to set the sensitivity fully anti-clockwise unless this results in the sensor not detecting when water is in the bath. Please note the LED on the sensor will light up red when it is detecting water. Check control box functionality if there is a problem (see Fig 1 above).



Guarantee: This product carries a full 12 months manufacturers non-transferrable parts warranty.

Technical Assistance Help: Armour Plastics Limited, Pennywell Industrial Estate, Sunderland, Tyne & Wear, SR4 9EN
Tel: +44 (0)191 534 6061 Fax: +44 (0)191 534 3626 Web: www.renaissance-baths.co.uk