

Doc M Close Coupled WC Pack

Introduction

The Inta Doc M WC packs complies with the approved Document M of the Building Regulations and BS8300:2018. The Inta Doc M WC packs provides both left and right hand layouts without the need to specify right or left hand assemblies*

*NOTE. The drawing on page 3 illustrates a left hand layout, for right hand layouts this must be reversed.



- Complies with document M of the Building Regulations and BS8300:2018
- Close coupled and Low level packs available
- TMV3 approved packs available
- Operating pressure range of 0.1 to 5 bar
- Available with white, blue or grey

Product Range

Description	Finish	Code No.
Doc M 6Ltr close coupled WC pack with white rails	White	DM601WH
Doc M 6Ltr close coupled WC pack with blue rails	Blue	DM601BL
Doc M 6Ltr close coupled WC pack with grey rails	Grey	DM601GR
* Doc M 6Ltr close coupled WC pack with white rails & TMV3 approved Basin Tap	White	DMX601WH
* Doc M 6Ltr close coupled WC pack with blue rails & TMV3 approved Basin Tap	Blue	DMX601BL
* Doc M 6Ltr close coupled WC pack with grey rails & TMV3 approved Basin Tap	Grey	DMX601GR
* Doc M 6Ltr close coupled WC pack with white rails & TMV3 approved Mixing valve	White	DM601WH3
* Doc M 6Ltr close coupled WC pack with blue rails & TMV3 approved Mixing valve	Blue	DM601BL3
* Doc M 6Ltr close coupled WC pack with grey rails & TMV3 approved Mixing valve	Grey	DM601GR3

*Note: TMV3 approval applies to packs marked * only



Doc M Close Coupled WC Pack

■ Pack Contents

■ **WC SUITE**

Close Coupled HO Pan
6ltr Close Coupled Cistern & Spatula Lever
Seat Ring and Hinges

■ **BASIN**

450mm Basin - 2 Tap Holes
1 1/4" Basin Waste
Lever Operated Sequential Basin Mixer Tap
Bottle Trap
Wall Fixing Brackets
Tap hole stopper

■ **RAILS**

600mm Support Rails (x 5)
Hinged Support Rail with Toilet Roll Holder (x 1)

■ **ADDITIONAL MANDATORY ITEMS NOT INCLUDED**

Alarm Pull Cord With Two Red Bangles, Shelf & Facility for Limb Storage
Mirror 400mm wide x 1000mm high fixed at a height of 800mm from the floor to the bottom edge

■ **FIXING**

It is essential that fixing instructions be followed, as the security of all items is vitally important. Walls onto which fittings are to be mounted must be suitable for the intended use of the applicable product. Appropriate fixings should be used which are suitable for the material of the fixing wall. For specialist fixings advise contact Fisher Fixings to ensure the correct fixings are used.

■ **WC**

Plugged and screwed to the floor (not supplied)

■ **Cistern**

Plugged and screwed to the wall (not supplied)

■ **Basin**

Mounted on brackets provided using suitable fixings (not provided)

■ **Basin Mixer Tap**

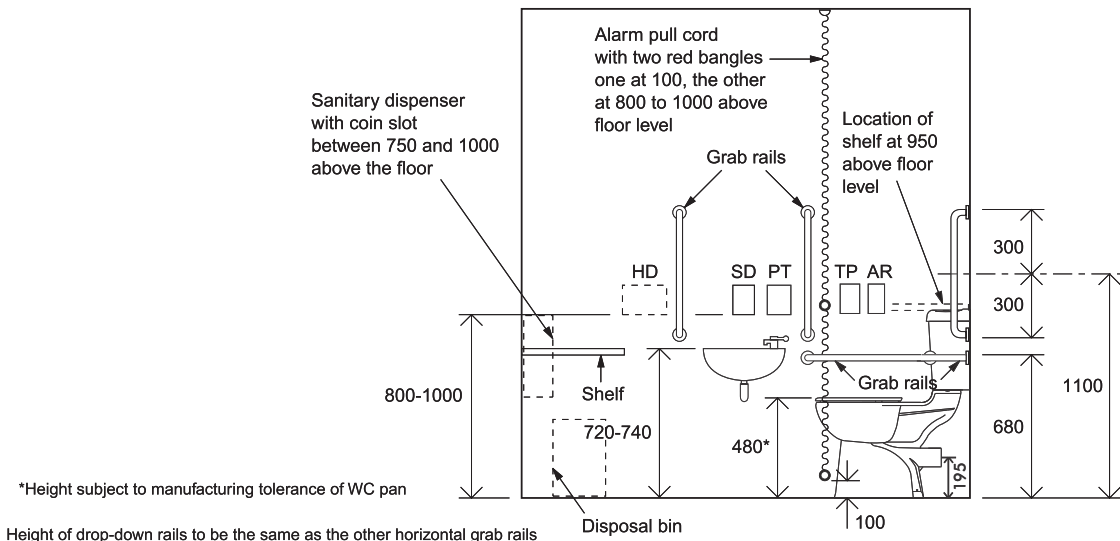
Lever operated Basin Mixer tap
Intatherm Thermostatic Basin Mixer Tap TMV3 (DMX601WH, DMX601BL & DMX601GR only)

■ **Thermostatic Mixing Valve**

Intamix TMV3 approved 15mm Thermostatic Mixing Valve (DM601WH3, DM601BL3 & DM601GR3 only)

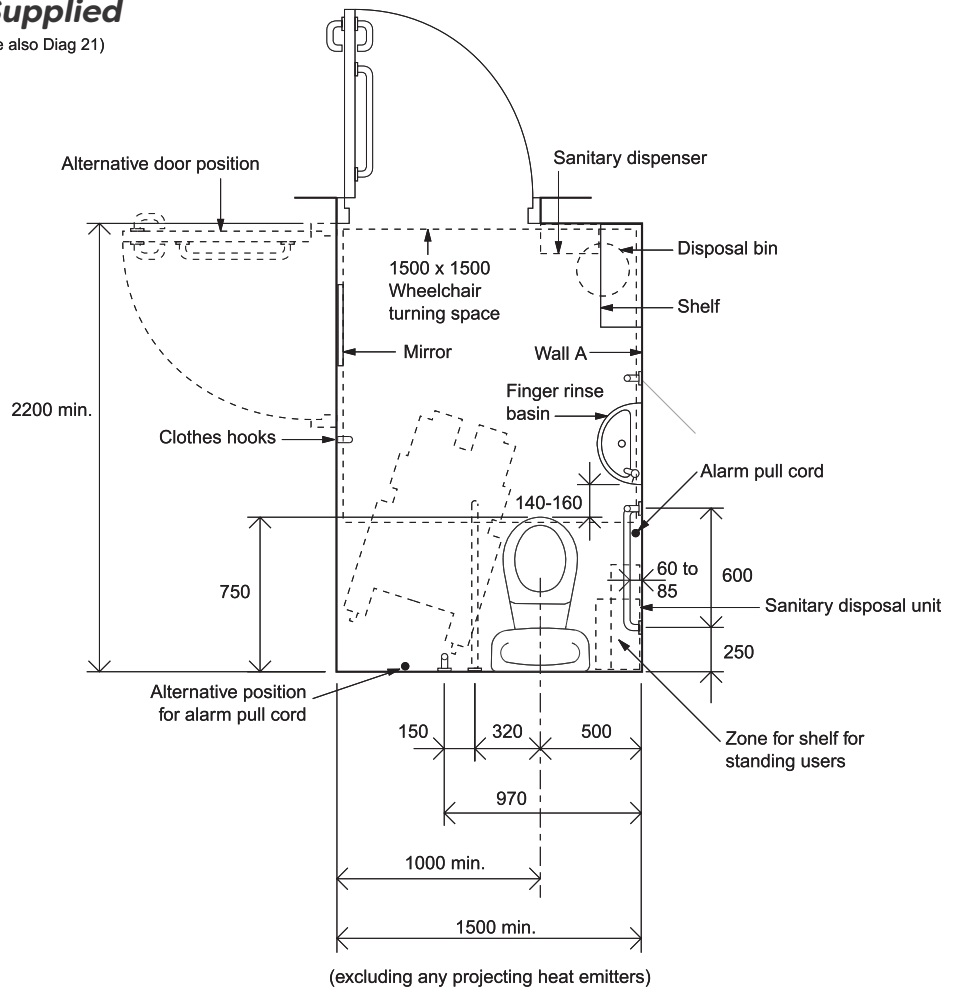


Doc M Close Coupled WC Pack



Additional Items - Not Supplied

- HD: Possible position for automatic hand dryer (see also Diag 21)
- SD: Soap dispenser
- PT: Paper towel dispenser
- AR: Alarm reset button
- TP: Toilet paper dispenser



Note
Layout for right hand transfer to WC

