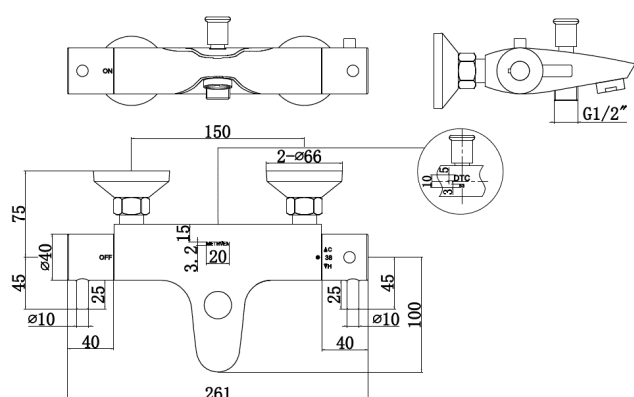


Thermostatic Bath Shower Mixer Wall Mounted Body Only



CONSTRUCTION: Brass

CARTRIDGE/VALVE TYPE: Thermostatic

SUPPLY: Suitable for high pressure only

INLET CONNECTIONS: 3/4" BSP

WORKING PRESSURES: 1.0 - 5.0 bar

OPERATION: Separate Flow And Temperature Controls

- Thermostatic valve with 38°C temperature stop (*with override*)
- Products which are easy to use by all the family

TLVBSMWMB0

Chrome

Open Outlet Flow (Bar - l/min)

BAR	0.3	0.5	1.0	2.0	3.0	4.0	5.0
SPOUT FLOW	7.2	9.4	13.5	19.2	23.5	27	30.4



Please Note: Flow rate will be dictated by installation configurations.
Please ensure to check the appropriate flow restrictor information if applicable.
*Please refer to website for full warranty details.