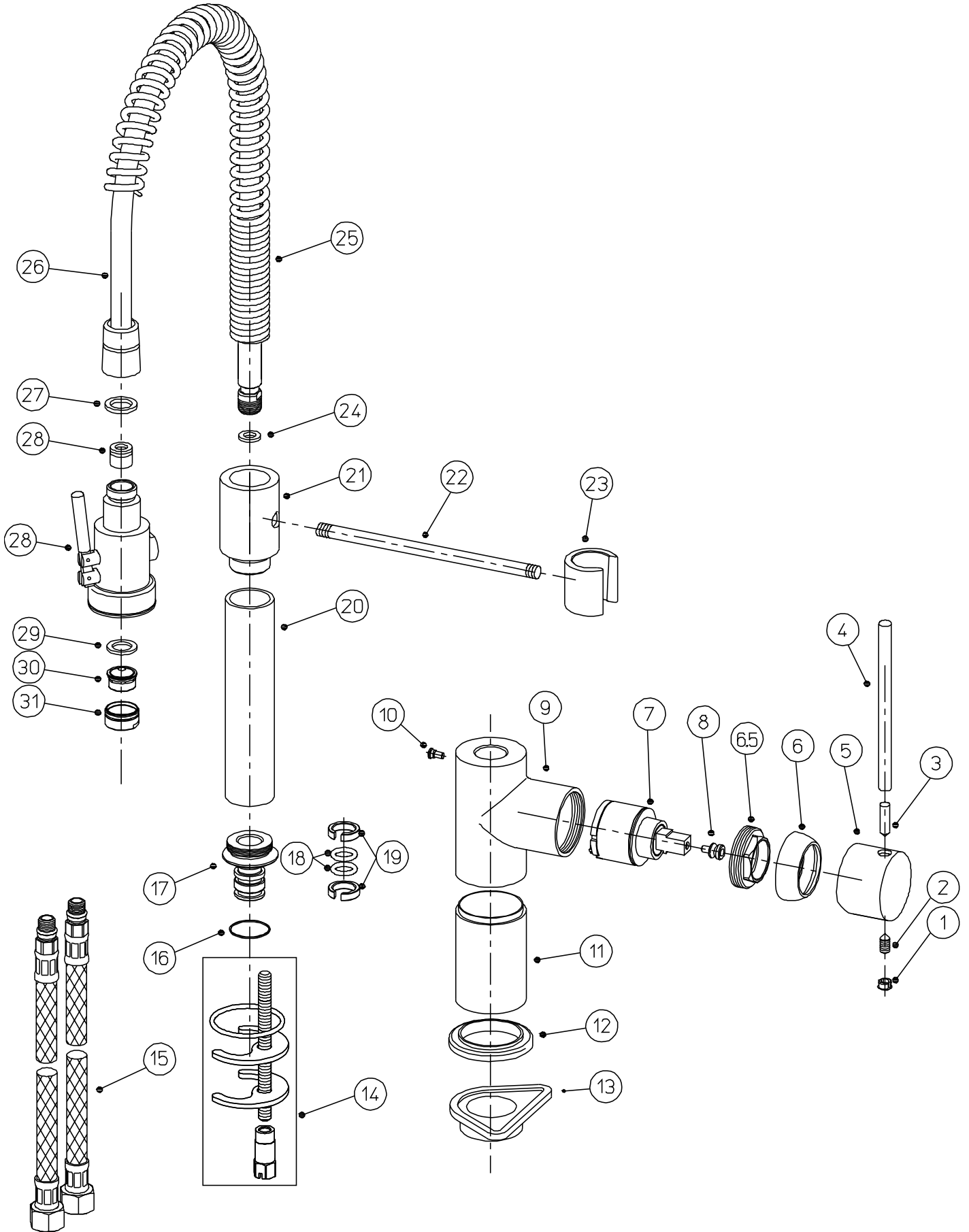


TPR1 – Pro Spray



General Advice:

- These instructions are intended as a guide only, if you are in any doubt you should seek the advice of a qualified professional.
- Take care not to mark finished parts with screwdrivers or other tools.
- Use a pair of rubber gloves to get a better grip on decorative hand tight parts.
- Ensure all parts are reassembled tightly.
- After maintenance test that all assemblies are water tight and function correctly.
- Always isolate the hot and cold water supplies before starting any maintenance, once isolated you should drain any residual water from your system.

To replace the valve:

1. Turn the handle (4) backwards.
2. Remove dust cap (1).
3. Loosen grub screw (2) using a 2.5mm A/F Allen key.
4. Pull the handle (4, 5) horizontally away from the tap.
5. Unscrew the decorative valve cover (6) by hand.
6. Hold the body of the tap (20) firmly. Using an adjustable spanner unscrew the valve lock nut (7).
7. Pull the old valve cartridge (7) away from the tap.
8. Ensure that the valve chamber (9) is clean of dirt and grit.
9. Place the new valve (7) in the chamber (9), ensuring the locators on the base of valve (7) align with the recesses in the chamber of the tap (9).
10. Reassemble the tap in the reverse order.

To replace the spray head:

1. Hold spout nut (26) and unscrew sprayhead (28). take care not to loose rubber seal (27).
2. Reassemble the tap in the reverse order.