

## **EN** User manual Motorized Washbasin lifts



### **EN** Products

#### **Electric Height Adjustable Washbasins**

Washbasin lift - Basicline 415

Washbasin lift - Basicline 433

Washbasin lift - Designline 417

1. Introduction
2. Declaration of Conformity with EU-directives
3. Intended use
4. Technical data
5. Safe use
6. Safety arrangements
7. Load distribution and side forces
8. Actions after use
9. Instructions for recycling
10. Spare parts list
11. Electric system

# 1. Introduction

We have the pleasure to deliver a Granberg Interior Washbasin lift, an electrically operated lifting and lowering system for new or existing washbasins without cabinets under the washbasin.

**Only authorized persons may use the Washbasin lift!**

Authorization means obligation to read and follow the instructions.

It is very important that you read and understands the instructions before you use the device.  
If you have any questions - contact your supplier.

This Instruction manual shall be available for all concerned persons, be kept in a protected place and shall follow the product, if it is moved to another installation site or another house or apartment owner.

**Correct use, operation, inspections and maintenance are decisive for efficient and safe work.**

## 2. Declaration of Conformity with EU-directives

This product is CE-marked and is granted to conform to the basic safety and operation requirements, in accordance with de actual Machinery, EMC- and Low voltage Directives. A separate "CE-Declaration of Conformity" is available in separate document.

## 3. Intended use

The Washbasin lift is intended to vertically lift and lower a washbasin and sometimes even a mirror and lighting to a convenient level. The operation shall be indoors under normal housing conditions regarding temperature, humidity and lighting.

The Washbasin lift, which has electric protection class IP X4, is made for use in humid rooms, but not for rinsing and flushing with water. The hand control unit with spiral cable has protection class IP 65.

**It is absolutely forbidden for persons to stay on the washbasin, or to use it for lifting persons. It is also not allowed to use the lift as a support when a person rises up.**

## 4. Technical data

	<b>433</b>	<b>415</b>	<b>417</b>
<b>Electrical connection</b>	230 V / 120 V 345 W / 324 W	230 V / 120 V 345 W / 324 W	230 V / 120 V 345 W / 324 W
<b>Speed</b>	18 mm / s	18 mm / s	18 mm / s
<b>Height adjustment</b>	250 mm	250 mm	250 mm
<b>Lifting force</b>	150 kg	150 kg	150 kg
<b>Max load*</b>	40 kg*	40 kg*	40 kg*
<b>Max number of full work cycles</b>	1 / 10 min.	1 / 10 min.	1 / 10 min.

\* Distributed load on the washbasin

## 5. Safe use

The Washbasin lift is provided with safety arrangements in order to prevent and avoid damages and accidents. It is however still very important that the operator is well instructed in how to install and operate the Washbasin lift. In the following the Washbasin lift means the lifting machine and the fitted washbasin and possible mirror.

- Only use the Washbasin lift for its intended purpose.
- The operation and use must be made in such way that there is no risk for damages on persons and property.
- The Washbasin lift may only be operated by persons who have read and understood these instructions, and are authorized to use it.
- Be aware of that you as an operator are responsible for that nobody is damaged.
- The Washbasin lift and the work area must be in proper condition. The Washbasin lift must not be used if any fault has appeared which influences the functions or the operation safety. It shall also not be used if it has been repaired, altered or adjusted without permission of a responsible person.
- Make sure that the Washbasin lift is installed on a firm, flat and absolutely vertical wall with sufficient mounting details, enough for the total weight incl. the washbasin, its content, mirror and objects on it.
- The operator shall have a clear view of the hazardous parts of the Washbasin lift and the area around it all the time when operations are taking place.
- Do not touch any part of the lift when operating it. Only press the button for desired motion direction.
- Do not put hands, arms, or any other part of the body or any object under the washbasin when the lift is operated.
- **Note!** Jamming risk between the Washbasin lift and adjacent cabinets and benches.
- Only stable and securely loaded items may be handled. Mind the tilting risk for objects on the washbasin or shelf, which are unstable, e.g. carelessly piled. If the washbasin is tilt able there is a big risk that objects are tipping over or water from the washbasin will flow out.
- Never let the Washbasin lift touch any adjacent objects.
- Alterations of the Washbasin lift that influence the operational safety or the functions are not allowed.
- Decals and markings must not be removed or made illegible.
- Do not overload the Washbasin lift and make sure that the load distribution is correct.
- It is absolutely forbidden for persons to stay on the washbasin or to use the lift for lifting persons. It is also not allowed to use the lift as a support when a person rises up.
- Use safe and sufficient lifting methods when handling load to and from the Washbasin lift. In particular beware when handling heavy items, and goods with hazardous content or with sharp corners and edges.
- The Washbasin lift shall regularly, once a year, be inspected in order to prevent accidents.
- Applicable Building and Safe use Regulations must be complied with.
- Do not use the Washbasin lift as a lifting jack, e.g. for lifting things from the floor.
- The machine shall no be in direct contact with food.
- Do not use the Washbasin lift in a potentially explosive environment.
- When the operation is in a public location, particularly when children can enter the work area, the operator shall make satisfactory arrangements to prevent persons from entering the hazardous area when the lift is being operated, or it has been lowered from the parking position, e.g. by means of blocking the work area or by means of adding protection devices.
- During inspections, service and repair work there shall be no load on the washbasin lift. The most common functions is reached behind the mounting plate.
- Competent persons only must carry out installation, service and repair works.
- Only Granberg original spare parts shall be used when replacing any parts. Our warranty commitment can otherwise be invalidated.

## 6. Safety arrangements



The safety switch halts the descent of the basin if it comes into contact with an object or the user's legs. (Accessories for some models).

## 7. Load distribution and side forces

### Basic loading requirements:

- **100 % of the rated load distributed over the entire washbasin surface, with the centre of gravity at the washbasin top.**
- **Horizontal forces are not allowed.**

Horizontal forces can appear, for example, when pressing onto the Washbasin.

It is difficult to estimate the size of the actual horizontal force, so utmost care must always be taken.

Further to the incorporated safety arrangements additional can safety actions may be required on or at the Washbasin lift. Discuss suitable actions with your Granberg representative or with the health and safety inspection.

We recommend that a Risk assessment in accordance with the Machinery Directive shall be made for the actual working conditions. If the owner fits accessories, contact Granberg to get approval for the loading conditions.

## 8. Actions after use

The Washbasin lift shall after use be left in its current position.

Switch off the main switch and lock it in closed position, if unauthorized use can occur.

To prevent unauthorized use can it is also possible to place the control device in a lockable cabinet.

## 9. Instructions for recycling

When the Washbasin lift is reused make sure that safety trip panel is the right size.

We recommend the machine to be sent to Granberg or to the Granberg distributor to get this done.

The machine is manufactured from re-usable materials or from materials that can be recycled.

## 10. Spare parts list

If any component does not work or has broken, contact your supplier.

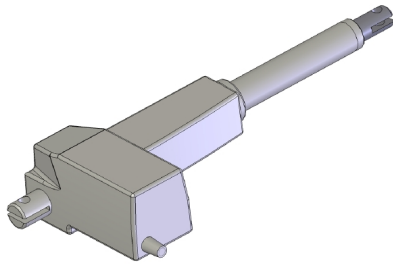
Only Granberg original spare parts must be used when replacing any parts. Our warranty commitment may otherwise be invalidated.

### Return of spare parts:

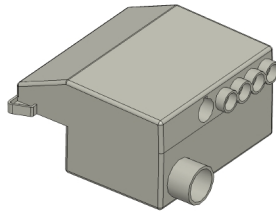
Contact Granberg prior to any return of parts.

Do not return any parts that have been worn out during normal operation or accidentally damaged. Only return worn or damaged parts if it is considered that the fault is covered by our warranty conditions. In such cases, return the parts without delay, otherwise the right to replacement may be lost.

When ordering spare parts always quote the manufacturing number and type.



Motor



Control box



Push button device with spiral cable

## 11. Electric system

