

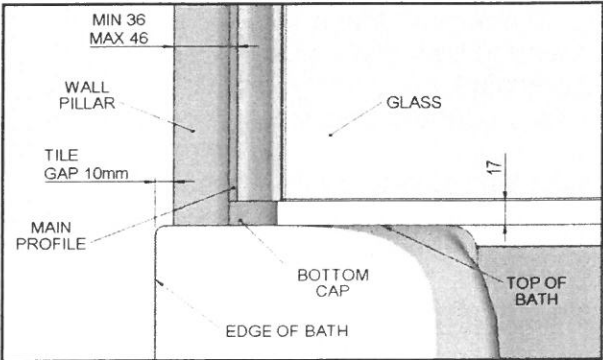
# Renaissance Easy Access Shower Bath

## Installation Instructions

### Step 1 - Notice to Installer

Please note the following:

- (A) **ALWAYS FIT A THERMOSTATICALLY CONTROLLED WATER FILLING SYSTEM ON THIS PRODUCT.**
- (b) Whilst much of this product is factory assembled we do recommend that 2 people are utilised for the fitting.
- (c) Prior to installation please make sure that:
  - You check the product is the correct item ordered, is complete and is free from damage. If there are any damages, please do not install the product.
  - The product requires a mains electrical supply. An ELCB circuit breaker may be required (Not supplied).
- (d) Please note the minimum and maximum thickness requirements of the tile/surface mounting requirements. We allow a minimum of 10mm of tile thickness to achieve the correct position and fitting of the upper bath screen.
- (e) **Area Preparation**  
Before installing the product please ensure that you have prepared your working area i.e. mounting walls are vertical and level. Please note that the Bath Screen allows for a maximum adjustment of 10mm off the vertical to cater for discrepancy in the mounting wall. Any distortion beyond this must be addressed prior to installation.



**Warning : If either dimensions in (d) or (e) are not observed; the screen and door magnets will not align.**

(a)	Take care to ensure bath remains fully protected at all times. Apply additional protection if objects are at risk of falling on the product i.e. during Tiling or stepping into the product.
(b)	Do not place burning cigarettes in or on the bath
(c)	Do not allow paint strippers, spirits, dry cleaning agents, cleansers or bleaches to come into contact with the bath surface
(d)	If a blow lamp is used during plumbing operations, ensure it does not come into contact with the product.
(e)	Use a high quality silicon sealant to ensure a watertight joint between bath rim and wall.
(f)	We always recommend the use of a thermostatically controlled water filling system.

### Product Inspection

Carefully open the crate, top and side section, and using 2 persons, remove bath horizontally from the crate. Remove all packaging and fully inspect the product for any damages or defect.

Every care has been taken to ensure your bath arrives in perfect condition. Before installation, please remove protective packaging from the bath and inspect. The manufacturer will not accept responsibility for the installation of faulty or damaged products..

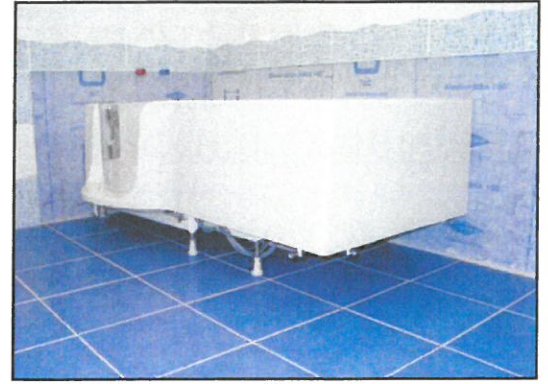
Re-apply all protective packaging.

### Installation Procedure

Please note that the product support and panel fixing systems have been factory fitted but will require adjustment to deal with any irregularities in the installation setting and or floor coverings. The following steps should be observed:



1. Remove both panels (Magnet fixings)

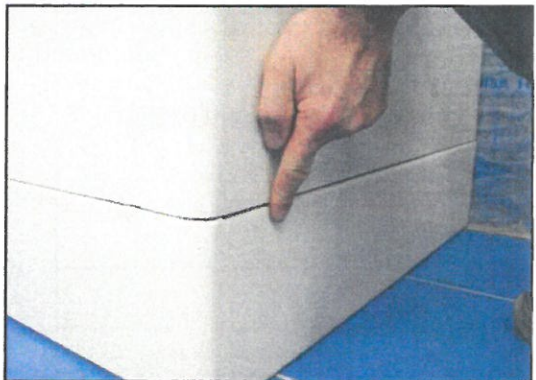
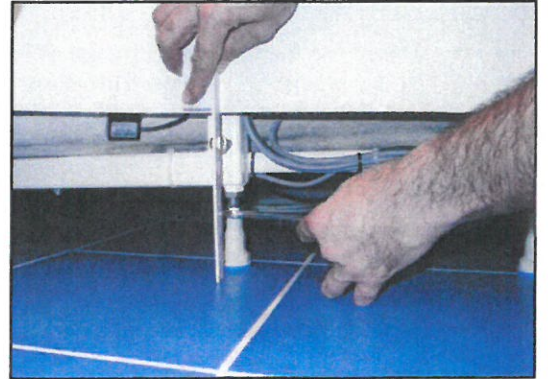


2. Place bath in intended location

3. Bath mounting frame and feet are factory set, to a level. But if the intended floor has any significant unevenness or bath is being set such that floor coverings protrude under bath panels, then set height needs to be adjusted accordingly.

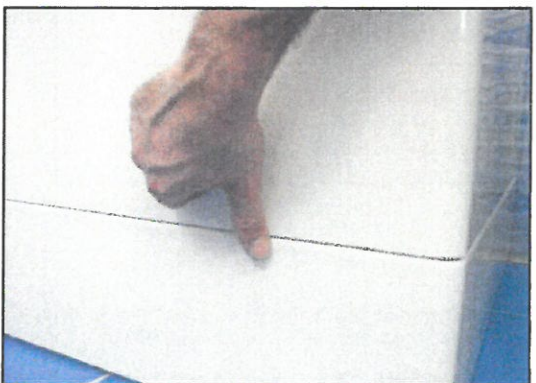
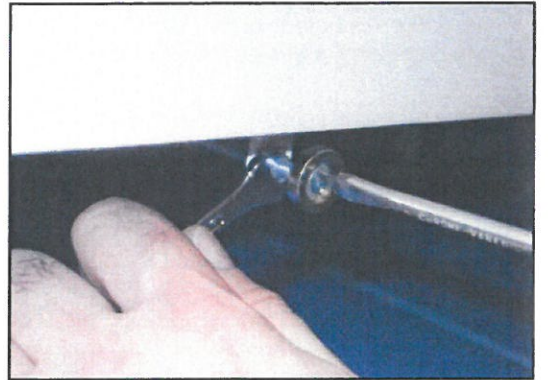
With tape measure take 3 measurements on the long side and 2 points on the end position. Ensure that there is 3-5mm gap between panel overall height and floor.

Adjust Feet using 22mm spanner to achieve above dimension.



4. Offer panels to bath, and check height fitment and horizontal adjustment. Ensure external panel radii are flush to edge of bath.

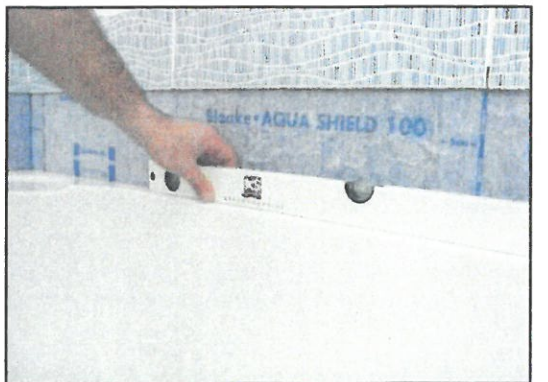
5. Adjust threaded magnets to adjust panels in/out to suit.



6. Refit panels and ensure a good aesthetic result is achieved.

7. Re-check the level of the bath along both the width and length using a spirit level.

Adjust feet if necessary to ensure bath is level and stable.



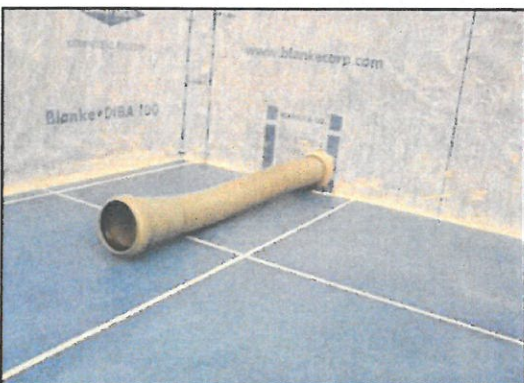




8. Remove bath from wall to allow access to mounting walls. Measure the height from the base of the rim to the floor in 3 places along the length and 2 places across the width.



9. Transcribe the dimensions taken above and mark up the receiving wall accordingly using a spirit level. Fix supporting batons (Not Supplied) to the wall sections. Pictures illustrate the use of galvanized batons, wooden items may be substituted.



10. Waste pipe connection - ensure supply to main drainage is of adequate length.

10a. Now refer to steps 2 and 3 for preliminary electrical and operations testing before proceeding to point 11 below and step 4.

11. Silicon rear rim/wall contact areas and push bath into position against batons.



12. Silicon front 3 mounting feet in position to prevent the bath from any further movement.



## Step 2

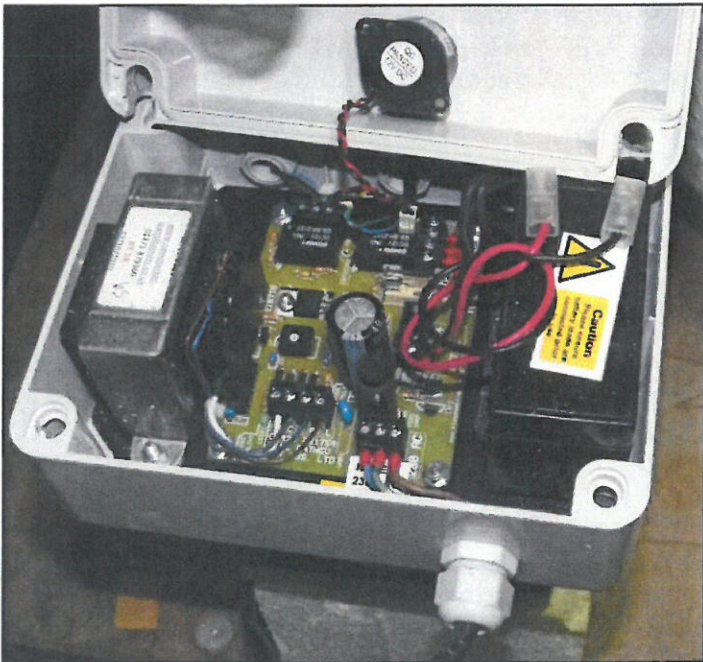
### Electrical Connection

**Warning:** All electrical installation should be performed by a suitable qualified electrician. The supply may require an RDC with a 3amp switch spur (not supplied).

1. Working from under the bath: unscrew locking/mounting bolt and withdraw control box from mounting tray.



2. Unscrew 4 off securing bolts and remove lid from control box (take care when removing lid as the buzzer fitted to the lid is connected to the PCB).



3. Feed (isolated) mains supply cable through appropriate gland in box and connect Live, Neutral and Earth wires to appropriate terminals.
4. Ensure that both positive (+red) and negative (-black) leads are securely connected to the battery terminals.
5. Re-assemble box and secure back into mounting tray on bath.

6. Switch on main supply to product. Nb. Allow a minimum of 20 minutes power-on to provide a working charge to the battery. Please note it is critical the power supply to the bath is switched on at all times. Failure to do this can result in the battery draining and not providing a backup.





## Step 3

### Bath Functionality/Operating Sequence

1. Ensure power is switched on. Prior to test please make sure that bath and seal are dried and cleaned. Failure to clean the door seal can lead to water leakage.

2. Press the button to switch on the magnetic door lock, it will latch into the down position. The light will come on indicating that the magnets are switched on.

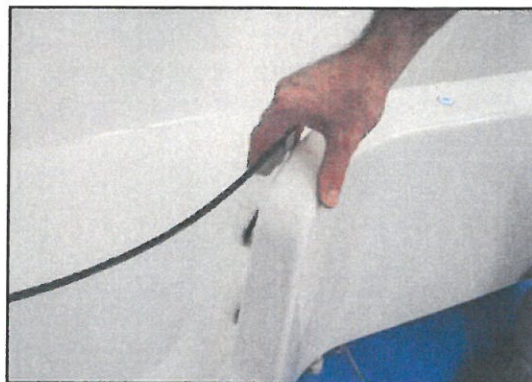
The door can now be closed.

Please note - hot water will soften the seal and reduce the resistance of the door over time and reduce the degree of effort required above.

3. Fill the bath with water up to the threshold of the door opening. Press the button again which will spring back up. The light will remain on as the water sensor has detected water in the bath, and will not allow the magnets to switch off.



4. Switch off the mains power. The buzzer will sound and the light on the button will switch off to indicate that the power has failed. The door will remain closed as it is powered by the battery backup. This backup will maintain the power for over 1 hour enabling the bath to remain operational during a power cut.



5. Switch the mains power back on. The buzzer will stop and the light will come back on. Allow the water to drain and the door will open when the water level is below the sensor. Level sensor adjustment may be required.

6. The sequence can now be repeated but this time the bath can be fully filled to check the effectiveness of door seal. If any leaks are evident, drain bath and re-check the cleanliness of door seal. Re-test as required.

7. Please refer to back page for servicing and adjustment procedures, if required.

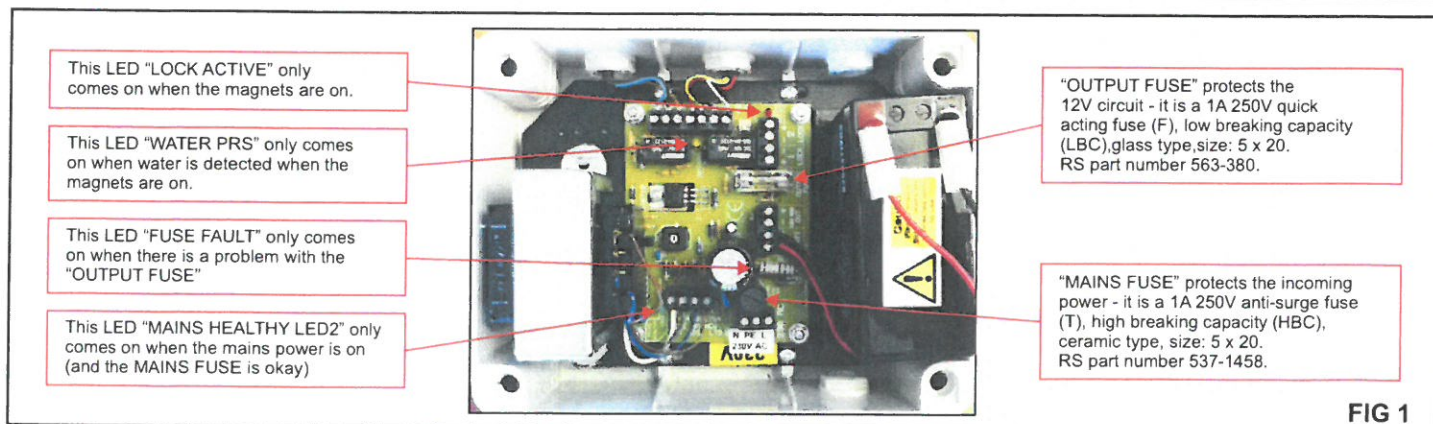


FIG 1

## Step 4

Complete the tiling process!

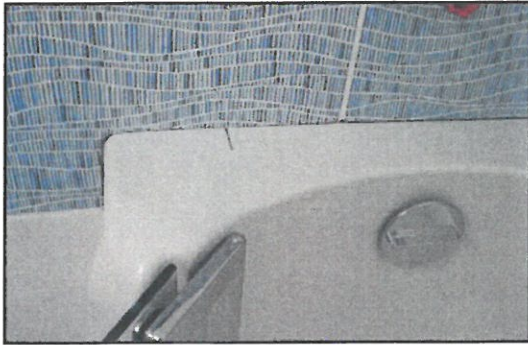


## Step 5

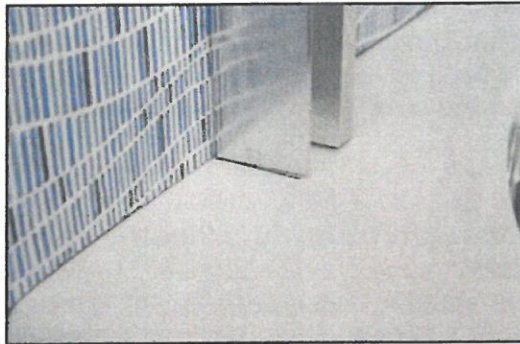
### Installation of the Shower Screen

*If a screen has not been purchased for this installation please skip to step 6.*

To install the screen please ensure the lower bath door is closed with the blue indicator light on. Please note that this operation requires 2 people.



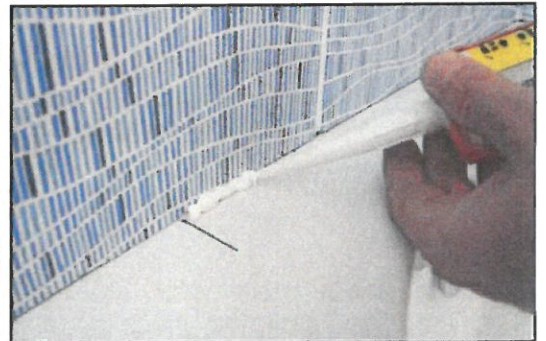
1. Please note Shower Screen wall profile location label fixed to the top surface of the bath rim adjacent to the lower door hinge. This label marks a position 118mm in from the outer edge of the bath.



2. Place the external edge of the wall profile exactly on the location label. Using a spirit level move the profile to a vertical position and mark the three drilling location points for the securing screws on the mounting surface.



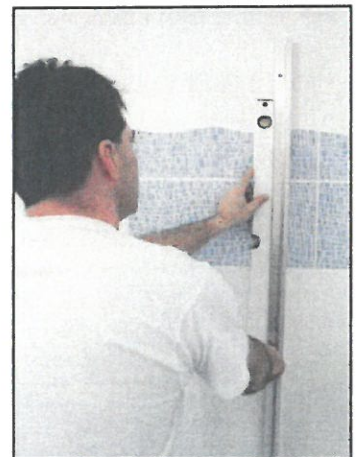
3. Drill 3 off 5mm holes through tiles and masonry. Insert wall plugs



4. Apply silicon sealant to the 5cm area inboard of the wall profile mounting point.



5. Apply silicon sealant to the rear area of the wall profile on the inner side of the bath installation. Screw and fix the wall profile against the wall.



6. Using a spirit level recheck the wall profile to ensure it is vertical.

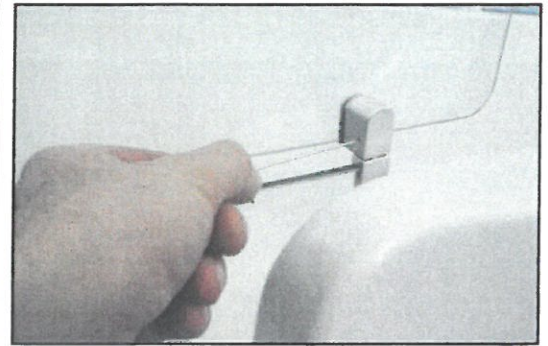


7. Place the location block on the glass door adjacent to the hinges as illustrated. **Attention: The lower bath door is factory fitted and must not be tampered with.**



8. Offer the assembled bath screen and locate the hinge pillar profile over the wall profile.

The location block represents the minimum gap to be observed between the lower glass door and screen edges. Move and locate the upper screen such that both the upper and lower magnet catches align (N.b ensure lower door remains locked). Place a 2mm packer between the catch magnet surfaces. Loosen the grub screw in the upper door magnetic catch and check for polarity if necessary reverse upper door magnet set the gap between screen and bath to 17mm and re-secure magnet with grub screw.



9. Using a spirit level adjust upper door to vertical.



10. Drill through the wall hinge pillar and wall profile in the top section of the profiles using a 3.5mm drill. Insert first fixing screw and cap washer. And tighten. Re-check level and drill and fix remaining 2 screws and washers in centre and lower section of profile. Locate chrome caps on all 3 screw heads. Re-set gap between upper and lower door catch magnets to 1mm and lock in position with the grub screw.

## Step 6

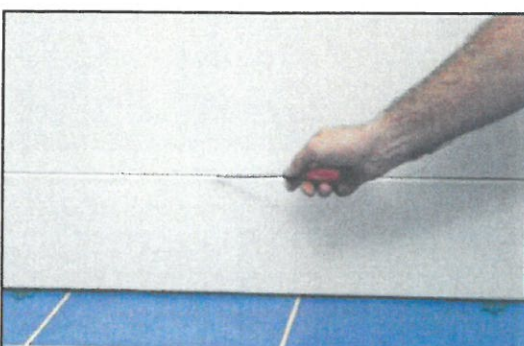
### Final Installation



1. Slide seal onto the bottom of upper door screen starting with the wall profile side. Make sure that the seal reaches the wall profile. Proceed to fit upper screen door handle.



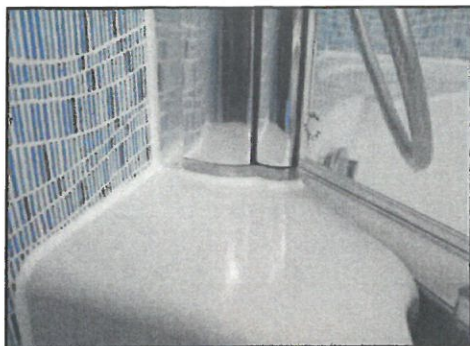
2. Check operation of top screen seal by moving screen over working area of the bath.



3. Adjust panel plinth heights to achieve a good quality fit. Leave around 3mm gap between panel and floor.



#### 4. Preparation for silicon sealing - clear down top rim of bath



5. Silicon completely the screen wall profile and bath rim as per illustrations. Silicon panels to floor tiles/covering if so desired.

**Bath should not be used for a further 24 hours to enable the silicon to fully cure.**



#### Step 7

#### Headrest - Optional Extra

Remove rear film and locate the head support on the rear section of bath as per illustration.

Cleaning - remove the headrest from the bath. Use warm water to clean the product and wipe dry.

Re-apply to bath in the same manner.



#### Servicing

(a) The bath door should always be deactivated when not in use. Ensure blue door switch is not illuminated when door is left open.

To extend the service life of the battery backup unit - fully drain the supply once a year in the following manner:

(b) Switch on power - activate sequence - close door - switch off power - alarm will sound (battery backup is working). Leave in this state for at least 3 hours.

(c) Switch on the power again for at least 3 hours such that the battery will re-charge.

#### Water level sensor adjustment

During the service life of the product it may be necessary to adjust the sensitivity of the water level sensor, proceed as follows:

Using a flat head screwdriver adjust the black dial, turning anti-clockwise for less sensitivity and clockwise for more sensitivity. It is recommended to set the sensitivity fully anti-clockwise unless this results in the sensor not detecting when water is in the bath. Please note the LED on the sensor will light up red when it is detecting water. Check control box functionality if there is a problem (see Fig 1 above).



**Guarantee: This product carries a full 12 months manufacturers non-transferrable parts warranty.**

**Technical Assistance Help:** Armour Plastics Limited, Pennywell Industrial Estate, Sunderland, Tyne & Wear, SR4 9EN  
Tel: +44 (0)191 534 6061 Fax: +44 (0)191 534 3626 Web: [www.renaissance-baths.co.uk](http://www.renaissance-baths.co.uk)