



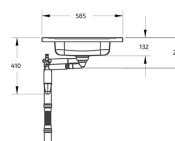
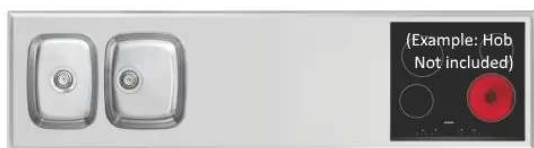
Independent 4 Life

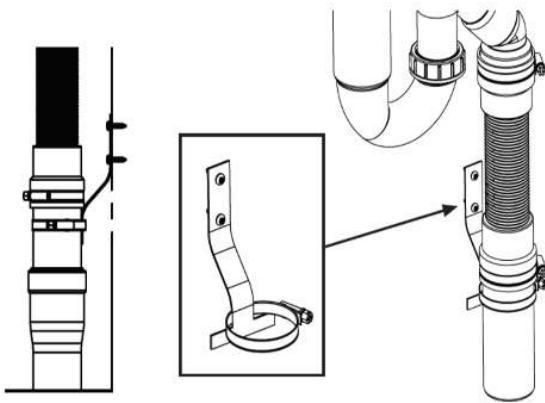
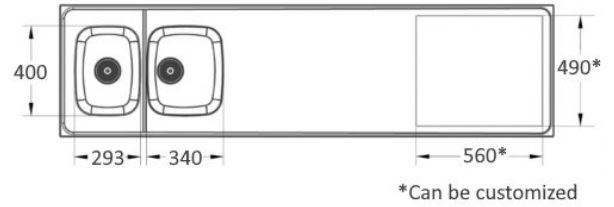
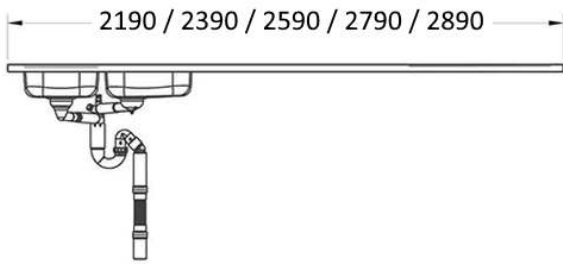
Granberg ESHS SS Workbench, 2x Bowls, Hob Cut-out, Choice of Size - OPT Heat Pads

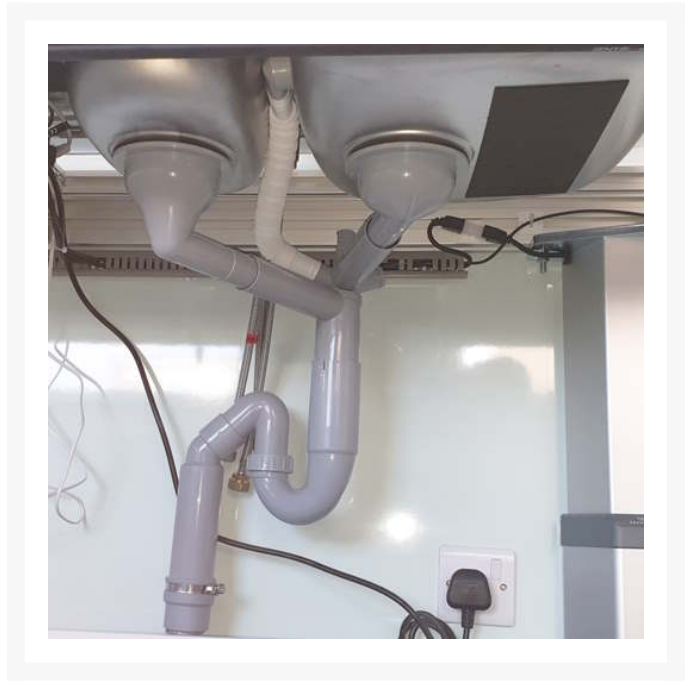
£2,533.80 Inc. VAT

Product Code: 617ESHS

Product Images







Product Options

Width (mm)	Price Inc. VAT
2190mm	£2,533.80
2390mm	£2,567.28
2590mm	£2,620.20
2790mm	£2,640.72
2890mm	£2,660.16

Additional Options

Optional accessories	2x 4G4S0801 - Self Adhesive Heat Insulation Pad 500x500mm	£47.51
	WFC-3754000 - Wolfcraft Ø 35mm (1 3/8") Tap Hole Cutter	£17.55
	618-025 - Teak Chopping Board for Sink Bowl 293x400mm	£163.80
	618-026 - Teak Chopping Board for Sink Bowl 340x400mm	£131.40
	618-024 - Wire Basket for Sink Bowl 340x400mm	£53.10
	618-022 - Sink / Worktop 500ml Soap Dispenser	£73.80

Description

The Granberg ESHS stainless steel workbench is an excellent complete solution for a kitchen, with 2 x shallow bowls kitchen sinks with a smooth easy clean worktop with a raised border to the perimeter with a hob cut-out which can be customized to your dimensions. With its high quality materials it is ideal for both domestic and commercial installations. Designed to be placed on top of the Granberg electric Baselift and Manulift height adjustable worktop systems.

With two shallow sink bowls with depths of just 120mm, free space for use as a drying and food preparation area with space for a 4x zone hob at one end.

Key benefits:

- Provides more space below the sink for the user's legs and knees
- Sit-on sink unit, no worktop required
- Bowl depths 120mm
- Turn able for left or right side use
- Central positioned wastes
- Shallow waste traps with 90mm dia. waste outlets in each sink bowl
- Includes manual basket waste, overflow and shallow water trap
- Waste kit includes inlet options for washing machine and dishwasher waste feeds
- Includes 200-650mm flexible plumbing waste kit (Product Code: 61801)
- Smooth stainless steel sheet construction, hygienic and wear-resistant surface
- Moisture resistant MDF board bonded to the underside of the stainless steel work surface for increased strength and to aid fixing
- Free space for tap mounting - requires a tap hole cutter

Technical details:

- For cabinet size (mm): 800
- Total width (mm): 2190, 2390, 2590, 2790 or 2890
- Total depth* (mm): 585
- Edge height (mm): 30
- Main bowl dimensions (mm): 340 x 400
- Main bowl depth (mm): 120
- Half bowl dimensions (mm): 293 x 400

- Half bowl depth (mm): 120
- Large waste outlets dia. (mm): 90
- Plate thickness: 1mm smooth stainless steel plate on an underside of fully-glued MDF board

Hob - Cut-out:

- The cooking hob shown in the image is not included
- Hob cut-out width x depth (mm): 560 x 490
- The cut-out size for the hob can be customized if required, contact us to discuss your requirements

*** Total depth explained:**

- Adapted to the height of the Granberg height-adjustable bench systems, this provides a 15mm space on the wall side for splash protection
- The width of the sink is 10mm shorter than standard to provide a 5mm gap on each side of the height-adjustable worktop lift to adjacent base units or wall

Recommended optional accessories:

- 2x 4G4S0801 - Heat insulation pads (mm): 500 x 500 x 6
- WFC-3754000 - Ø 35mm (1 3/8") Tap Hole Cutter
- 618-025 - Teak Chopping Board for Sink Bowl 293 x 400mm
- 618-026 - Teak Chopping Board for Sink Bowl 340 x 400mm
- 618-024 - Wire Basket for Sink Bowl 340 x 400mm
- 618-022 - Sink / Worktop 500ml Soap Dispenser

Heat insulation pads - Technical details:

- 2x Heat insulation pads (mm): 500 x 500 x 6
- Can be cut to size as required
- Materials: Grey neoprene sponge rubber
- Flame resistant
- Temperature resistant acrylic adhesive
- Supplied separately with self-adhesive backing
- See PDF data sheet for more information

Warranty:

- 2 year manufacturer warranty

Please note:

- Due to the custom nature of this product, it is made-to-order and is therefore non-returnable

Custom sizes:

- Custom widths and different bowl locations are possible, please contact us with your requirements

Manufacturer product codes:

- 617ESHS-219, 617ESHS-239, 617ESHS-259, 617ESHS-279 and 617ESHS-289

Additional Information

Manufacturer	Granberg
Width (mm)	2190, 2390, 2590, 2790, 2890
For Cabinet Size (mm)	800
Heat Insulated	Yes - Optional Pad(s)
Bowl Depth (mm)	120
Sink Installation	Counter Top