



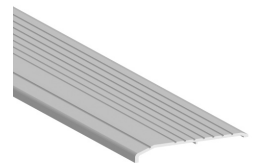
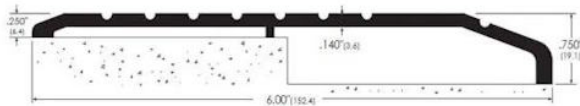
Independent 4 Life

# AWS Grooved AL Trans. TRH 152.4 W x 6.4 to 19.1mm H - Choice of Length 914 to 3048mm

From:	£79.73
To:	£718.83
Inc. VAT	

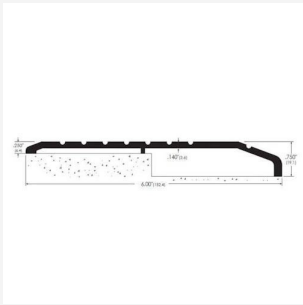
Product Code: 4LA840181

## Product Images



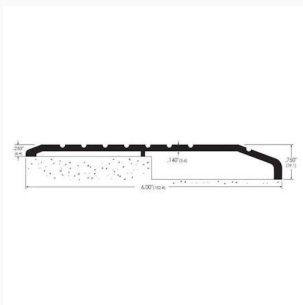
# Product Options

Width x Transition rise height x Length (ft / mm)



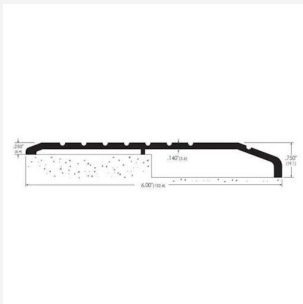
**152.4 W x 6.4 to 19.1mm H x 3ft / 914mm L** £66.44

152.4mm wide transition threshold, 6.4mm high one side, 19.1mm high other side. Aluminium, mill finish. 914mm ( 3ft ) length.



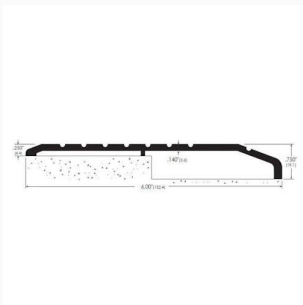
**152.4 W x 6.4 to 19.1mm H x 4ft / 1219mm L** £84.24

152.4mm wide transition threshold, 6.4mm high one side, 19.1mm high other side. Aluminium, mill finish. 1219mm ( 4ft ) length.



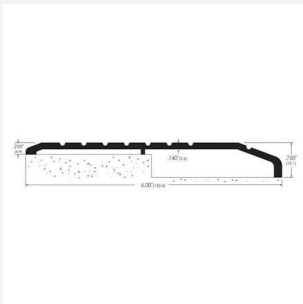
**152.4 W x 6.4 to 19.1mm H x 6ft / 1829mm L** £119.81

152.4mm wide transition threshold, 6.4mm high one side, 19.1mm high other side. Aluminium, mill finish. 1829mm ( 6ft ) length.



**152.4 W x 6.4 to 19.1mm H x 7ft / 2134mm L** £137.60

152.4mm wide transition threshold, 6.4mm high one side, 19.1mm high other side. Aluminium, mill finish. 2134mm ( 7ft ) length.



**152.4 W x 6.4 to 19.1mm H x 10ft / 3048mm L** £190.93

152.4mm wide transition threshold, 6.4mm high one side, 19.1mm high other side. Aluminium, mill finish. 3048mm / 10ft length.

# Description

Aluminium grooved transition door threshold, that bridges from 19.1mm high on one side to 6.4mm high on the other, with a total width of 152.4mm (6").

The 3.6mm gauge aluminium allows you to drill and screw the threshold into concrete without the difficulties you are likely to find using lighter materials - such as buckling under heavy loads or loose fixing screws.

**Key benefits:**

- For internal and external doors
- Aluminium mill finish
- Grooved top
- Simple to install
- Fixing holes undrilled
- Ideal for commercial and domestic installations
- Non flammable

**Technical details:**

- Choice of Length: 914mm (3 ft), 1219mm (4 ft), 1829mm (6 ft), 2134mm (7 ft) and 3048mm (10 ft)
- Width: 152.4mm (6")
- Height: 6.4mm (0.25") on one side, 19.1mm (0.75") on the other
- Material: 3.6mm (0.14") thick medium gauge aluminium

**Installation Instructions:**

- Measure and cut threshold to size as required
- Notch as necessary, to suit door frame
- Caulk underneath and around edges of threshold for moisture control
- Attach threshold to floor surface with screws provided

# Additional Information

Manufacturer	AWS
Application	Transition
Length (mm / feet)	914 / 3', 1219 / 4', 1829 / 6', 2134 / 7', 3048 / 10'
Width (mm / inches)	152.4 / 6"
Transition Height (mm / inches)	19.1 / 0.75"
Supplied Pre-drilled	No