



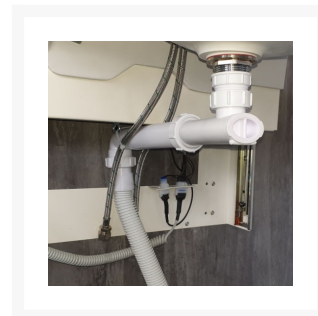
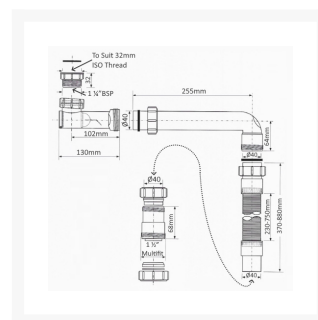
Independent 4 Life

# McAlpine 1½" & 1¼" ADJ Waterless Trap Kit

£46.20 Inc. VAT

Product Code: FLECKIT1WHB140

## Product Images



## Description

Assembled by McAlpine, exclusively for Independent 4 Life this waste kit is for height adjustable wash hand basin systems.

This flexible washbasin waste kit features a space saver KIWA Approved self-closing waste valve with a 255mm compression elbow that can be reduced in length depending on the size and location of your waste outlet, a 370-880mm flexible drain hose with a compression 40mm to 1½" Multifit.

The innovative self-cleaning waste valves internal membrane opens under water pressure to allow discharge

to flow freely and then closes to form a seal to prevent foul odour or sewer gas entering the bathroom.

**Key benefits:**

- Glues and solvents are not required for assembly
- Overall height 62 to 80mm
- Kiwa Approved waste
- Designed to allow access for users below the washbasin and ease of access to the waste valve
- The valve can be easily cleaned without having to disassemble the discharge pipework
- The internal membrane opens under water pressure to allow discharge to flow freely and then closes to form a seal to prevent foul odour or sewer gas entering the bathroom
- The valve allows air to be drawn into the discharge waste pipe when negative pressures occur and eliminates the need for secondary ventilation to the discharge pipework
- The WHB self-cleaning waste valve having no water seal can never dry out through evaporation or lack of use of the basin as the membrane seal remains closed
- Supplied with 1¼" BSP female inlet nut with optional 1¼" to 32mm ISO Thread basin waste connector
- Drain hose 370-880mm overall length with 230-750mm flexible hose

**Technical details:**

- Overall depth of waste with 1¼" BSP female inlet nut (mm): 62
- Overall depth of waste with 1¼" BSP female inlet nut and 32mm ISO Thread (mm): 80
- Can be reduced - Horizontal compression elbow length (mm): 255
- Drain hose with 40mm compression fittings, overall length (mm): 370mm to 880
- Flexible drain hose (mm): 230-750mm
- Flexible drain hose (mm): 230-750mm
- Multifit connector to flexible drain hose and waste outlet with compression connections 40mm and 32mm (1¼" / 1½")

**Cleaning:**

- The valve can be easily cleaned without having to disassemble the discharge pipework
- Simply remove the split pin at the front of the valve, take out the plug and membrane and clean in hot soapy water
- Reassemble and relocate the split pin in the slot provided

**Warranty:**

- 10-year manufacturer warranty, subject to correct use and installation

# Additional Information

---

Manufacturer	McAlpine
Component	Flexible Waste, Shallow Trap, Waterless Trap, Waste Kit - Wash Basin
Hose Length (mm) / Application	370-880 / Flexible Waste
Approvals	Kiwa Approved