



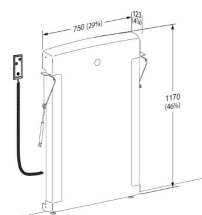
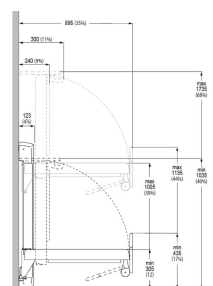
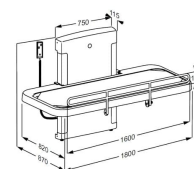
Independent 4 Life

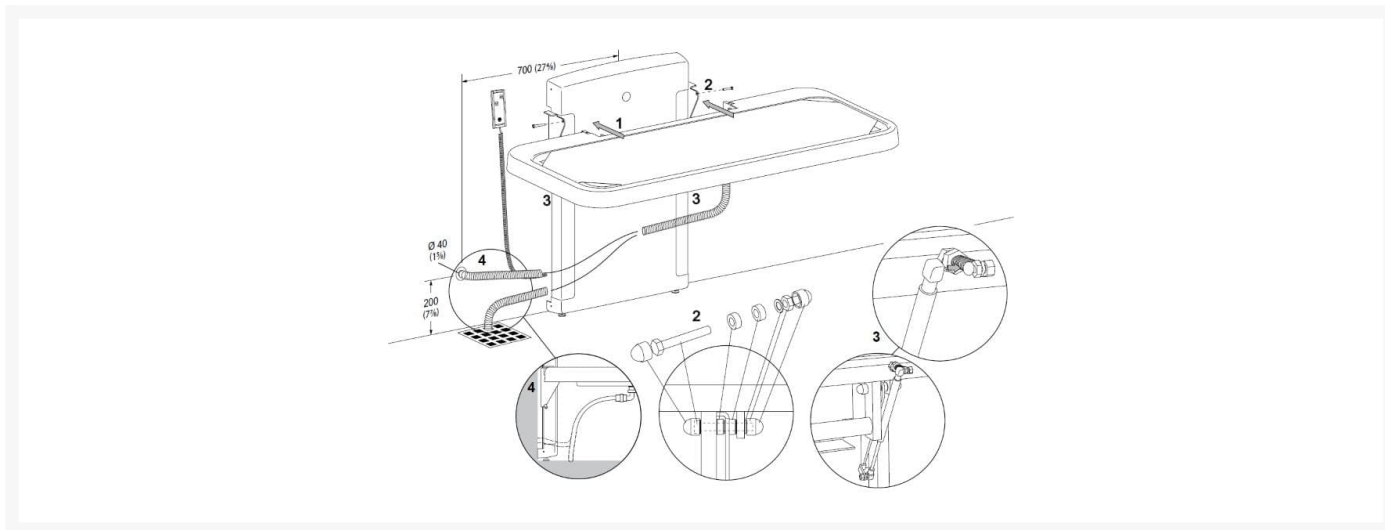
Pressalit SCT 2100, Coated Canvas, Electric Height ADJ, Safety Rail, 1800mm

£5,716.50 Inc. VAT

Product Code: R8581418000

Product Images





Description

Pressalit Care Nursing Bench 2000, with a 1800mm length electrically height adjustable nursing bench with wired hand control and a folding safety rail.

The nursing bench 2000 has a low starting height for easy transfer onto the bench with a smooth PVC coated canvas stretcher, water is collected in the tray underneath.

The flexibility of the height adjustable nursing bench gives advantages to both the user and the carer, as the correct working height is equally important for the carer's safety and the user's comfort.

Height adjustment:

- Height adjustable 700 mm; from 300 -1000mm

Control:

- Electric with wired hand control - the red buttons clearly indicate "Up" and "Down"
- The wired hand control comes with a holder for fitting to the wall

Water collection tray:

- Water collection tray with integrated water outlet prevents water from splashing on carers or the floor
- The flexible hose attaches to the centre mounted outlet of the water collection tray
- The hose can be connected to either an outlet in the floor or on the wall

Space saving:

- The safety rail can be folded easily up or down
- Integrated gas cylinders enable the bench to be folded out of the way when not in use to maximise floor space
- Available separately: Wall-mounted, Safety lock (Product Code: R8485)

Stretcher:

- Washable lying surface - easy removeable with zip
- Water collects in the tray underneath
- The stretcher of the bench is very easy to clean

Specification:

- Length: 1800mm
- Outer dimensions (mm): 900 x 1800
- Height adjustable range (mm): 700
- Speed, upwards mm/s: 15
- Speed, downwards mm/s: 20
- Noise level (dB): 48
- Mains connection (V): 230
- Mains connection (Hz): 50-60
- IP Rating of Actuator (motor), Control box: IPX6
- IP Rating of Wired remote control: IPX66
- Power consumption by maximum load (W): 70
- Power consumption by standby (W): 2
- Maximum weight: 175kg
- Materials: Powder-laquered stainless steel, canvas (PVC-coated for extra durability) and polystyrene
- Colour: 000 White
- Wall fixing kit not included, see PDF downloads for more information
- This product must be wired via. a fused spur

Declaration of conformity:

- This product complies with the requirements of Council Directive 93/42/EEC concerning medical devices, as last amended by Council Directive 2007/47/EC of 5 September 2007
- It also complies with all relevant requirements in the Council Directive 2006/42/EC (of 17 May 2006) on machinery and the Council Directive 2011/65/EC on RoHS

Manufacturer warranty:

- **Note:** If the product is installed in an atmosphere heavy in salt or chloride, the warranty of the nursing bench will be reduced from the normal 3 years to 1 year. Salt and chloride have a corrosive effect on the products components and will cause a decrease in the life expectancy of the product. The damaging effects can, however, be reduced if the product is showered with tap water on a daily basis.

Replaces Product Code and Title:

- R8582418000 - Pressalit Care Nursing Bench 2000, Coated Canvas Cover, Electrically 700mm Height Adjustable with Safety Rail, 1800mm

Additional Information

Manufacturer	Pressalit
Mounting	Wall
Width (mm)	1800
Adjustment	Electric Adjustable Height
Front Safety Rail	Yes
Brand / Model	Pressalit - SCT 2100
Height adjustment (mm)	700