



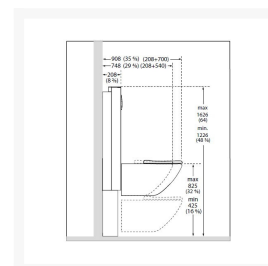
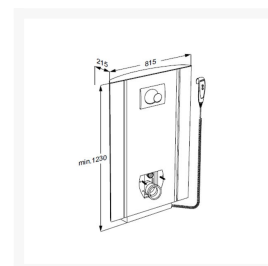
Independent 4 Life

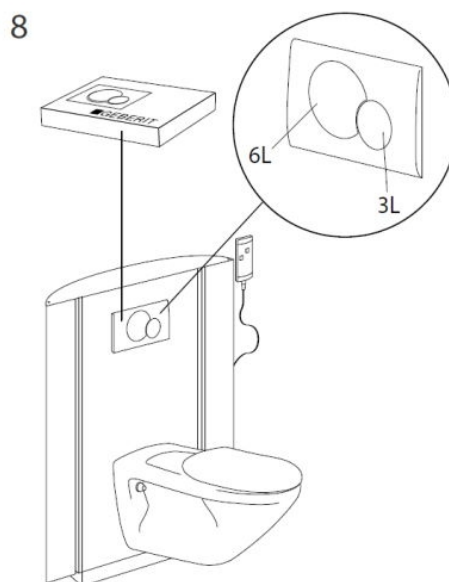
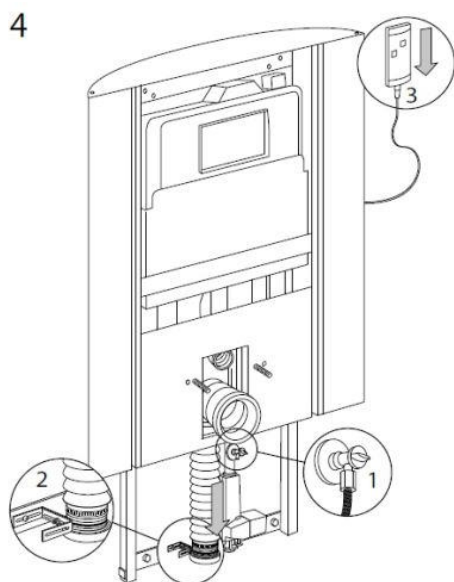
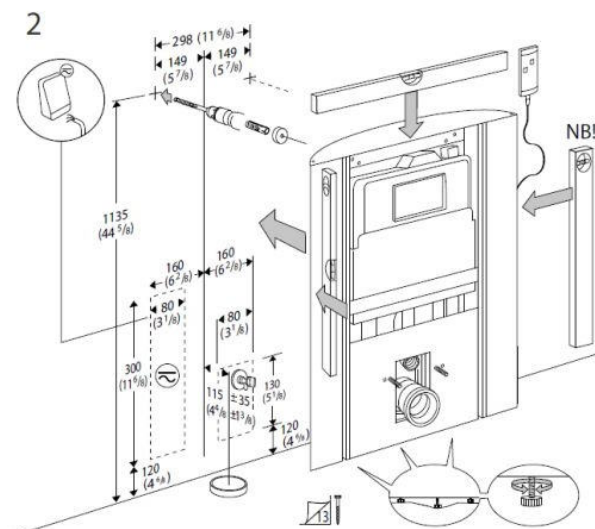
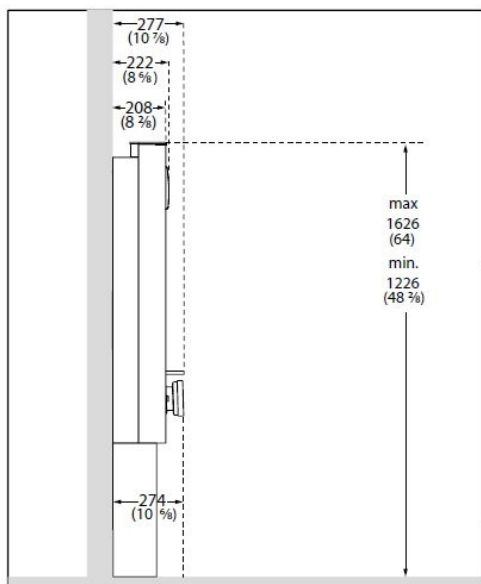
# Pressalit SELECT TL2 Toilet Lifter, ELECT ADJ, Wired Hand Control, Side Profiles, Floor Outlet - Choice of Colour

£6,555.60 Inc. VAT

Product Code: R8312xxx

## Product Images







## Product Options

Colour	Price Inc. VAT
Pressalit White 000	£6,555.60
Pressalit Anthracite 112	£6,555.60

## Description

Electric height adjustable toilet lifter from the Pressalit SELECT range with side profiles, for optional support arms (order separately).

The integral vertical side profiles allow for the addition of PLUS Left and right hand operated support arms in 700 or 850mm lengths to suit standard or projected hung toilet pans.

Flush buttons can be fixed to the underside of Pressalit PLUS support arms (mains or battery) to auto operate the Geberit cistern (Product code: R9342 order separately).

The toilet lifter provides 400mm of continuous adjustment, via the wired hand controller, between 425 - 825mm.

The lifter can be at different heights to suit different users/transfer techniques, powered adjustments with an easy to use controller where frequent adjustments are essential.

The SELECT toilet lifter can be further complimented with fixed or removable backrests or a shower toilet for a bespoke solution.

Includes a Geberit concealed cistern with dual flushing, pre-set at 3/6 litres. The toilet lifters front cover is available in a choice of colours.

This version is for floor waste outlets only.

### **Key benefits:**

- SELECT TL2 toilet lifter, electrically height adjustable, even with the user seated
- With integral vertical side profiles allow for addition of PLUS left and right hand operated support arms
- Order Plus folding support arms separately, 700 and 850mm lengths. A range of colours are available
- The toilet can be raised and lowered 400mm using the wired hand control
- Designed with a minimum of holes making cleaning fast and effective
- Geberit cistern with dual flushing system pre-set at 3/6 litres
- The toilet pan and toilet seat are not included (order separately)
- Pressalit backrests fixed and removable can be fitted to the front plate (order separately)
- Choice of front cover colour

### **WC pan compatibility:**

- Toilet lifter WC pan fixings 180mm c/c
- Compatible with the Pressalit Wall hung toilet pans with a 540mm or 700mm projection

### **Technical details:**

- Overall width (mm): 815
- Overall depth (mm): 215
- Height Min-Max (mm): 1230-1630
- Height adjustment (mm): 400
- Height adjustment range (mm): 425-825
- Geberit cistern with dual flushing system preset at 3/6 litres
- Geberit dual flushing plate, surface mounted
- Floor waste outlet
- Weight (kg): 66
- Maximum user weight (kg): 200
- Maximum load, including user mass and accessories (kg): 235
- Speed, up (mm/s): 12
- Speed, downwards (mm/s): 12
- Noise level (dB): 48

### **Electrical technical details:**

- Please refer to the PDF download for the installation instructions
- Mains connection (V): 230
- Mains cable length to Transformer (mm): 3500
- Hz: 50-60
- Electrical rating (IP): IPX6
- Power consumption (max. load) (W): 70
- Power consumption (standby) (W): 2
- Actuator (motor): LA31 Careline, (Linak), 4000N, IPX6
- Control box: CB9 Careline, (Linak), IPX6
- Wired remote control: HB3 (Linak), IP66
- Wired controller cable length from control box / transformer (mm): 3500
- Note: Upon installation the 2-pin plug must be removed and hard wired to a fused spur, as per electrical regulations

### **Materials:**

- Toilet lifter: Mainly constructed of anodised aluminium
- Front plate and the bottom plate: Made of polystyrene (PS)

[www.independent4life.co.uk](http://www.independent4life.co.uk) | [info@independent4life.co.uk](mailto:info@independent4life.co.uk) | Tel: 0800 500 3001 | VAT No: 942447711

EORI GB942447711000

**Declaration of conformity:**

- Complies with the requirements of Council Directive 93/42/EEC concerning medical devices, as last amended by Council Directive 2007/47/EC of 5 September 2007
- It also complies with all relevant requirements in the Council Directive 2006/42/EC (of 17 May 2006) on machinery and the Council Directive 2011/65/EC on RoHS

**Warranty:**

- 5 year manufacturer warranty

**Manufacturer product codes:**

- R8312000, R8312112,

**Returns: Please note:**

- Due health and hygiene and infection control this product is non-returnable

**Additional Information**

Manufacturer	Pressalit
Brand / Model	Pressalit / Select
Height ADJ Range (mm)	400
Installation Type	Exposed
Flush Operation	Front Dual Button Flush
Operation	Wired Hand Controller
Waste Outlet Position	Floor
Support Arms	Yes - Side Profiles