



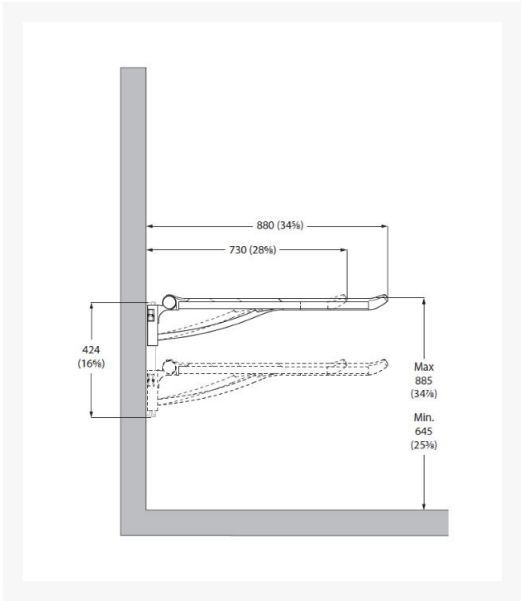
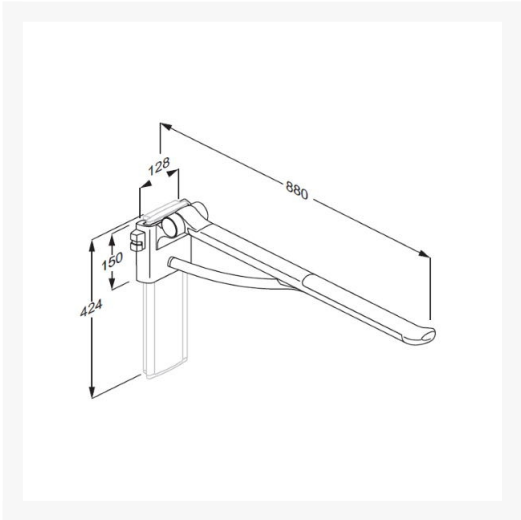
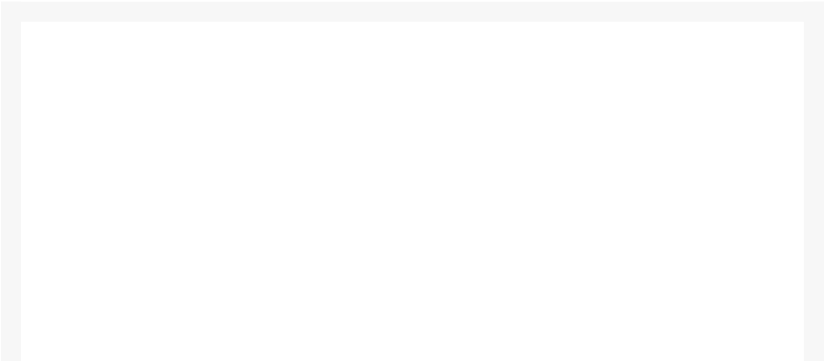
Independent 4 Life

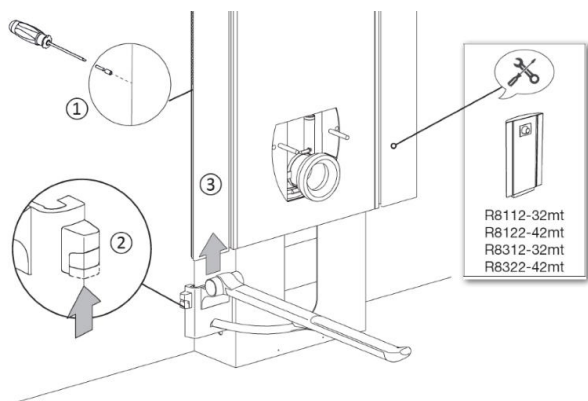
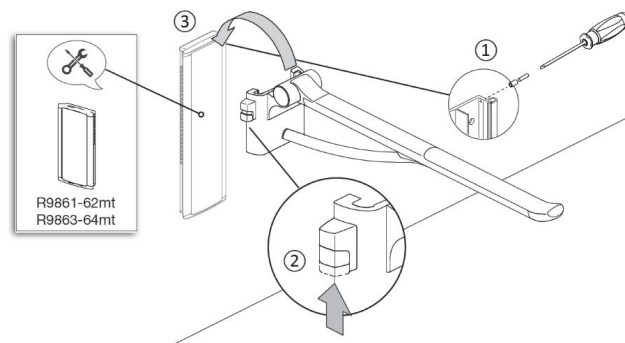
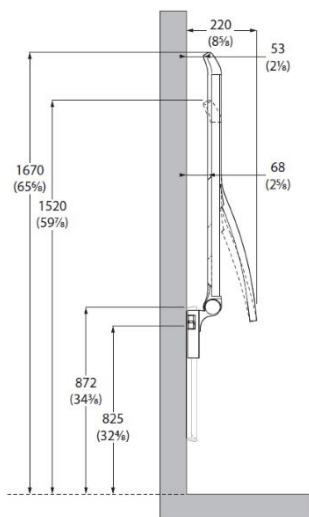
£503.10 Inc. VAT

# **Pressalit PLUS 850mm Counterbalanced Support Arm for SELECT Side Profiles & PLUS VERT Tracks (LH operated) - Choice of Colour**

Product Code: R371385xxx

# Product Images





## Product Options

---

Colour	Price Inc. VAT
Pressalit White 000	£503.10
Pressalit Red 035	£553.50
Pressalit Dark Blue 108	£553.50
Pressalit Anthracite 112	£503.10
Pressalit Lime Green 277	£553.50

## Description

---

PLUS counterbalanced support arm, that is foldable, with an 880mm overall offset from the wall (when track mounted), ergonomically shaped to provide a clear sense of where the support arm ends.

Vertically adjustable for the Select side profiles located either side of the manual and electric toilet lifters. Also suitable for the left-hand operated grooved vertical 210 or 400mm length PLUS wall tracks.

The support arm is used as a support for sitting down or getting up from a toilet, or for sideways transfer from a wheelchair.

The oval shape gives an easy and comfortable surface to lean and push against.

This support arm is supplied with the vertical track bracket only, and should be mounted on a Plus vertical wall track (not included) or the Wide Select Toilet Lifter.

Suitable for use with floor standing toilets and WC pans projecting 700mm.

### Key benefits:

- Slides onto the left handed Pressalit PLUS vertical wall tracks 210 and 400mm lengths and the SELECT Toilet Lifter left Side Profile (not included)
- Actual length of support arm 850mm
- Left-hand grip lock operated
- Counterbalanced mechanism that prevents the support arm moving unless guided up or down
- Can be folded when not in use to create more room space
- Ergonomic grip for weak hands
- Soft and slip-resistant material that has a warm feel
- The oval shape gives an easy and comfortable surface to lean and push against
- The end of the support arm is enlarged so that it is easier to pull forward from a sitting position
- Provides a clear sense of where the support arm ends
- The underside is shaped for the mounting of various accessories
- For indoor use in a wet environment, such as a bathroom or a washroom, in private homes, nursing homes and hospitals
- Doc M compliant
- Range of colours available

**Counterbalanced mechanism:**

- Prevents the support arm moving unless guided up or down
- For example, if you take it to 45° it will stay at 45° until you push it back up or pull it down further

**Technical details:**

- Total projection from wall, including vertical wall track (not included) (mm): 880
- Actual length of support arm (mm): 850
- Top of rail distance from the wall / face of Select Side Profile when folded (mm): 53
- Inner grab distance from the wall / face of Select Side Profile when folded (mm): 68
- Total arm projection - Distance from the wall / face of Select Side Profile when folded (mm): 220
- Width of track bracket (mm): 128
- Height of track bracket (mm): 150
- Left-hand push button lock, works with grooved track
- For use with floor standing toilets and pans projecting (mm): 700
- Max. load (kg): 150
- Weight (kg): 3.35

**Materials:**

- Arms are primarily constructed in 10-micrometre anodized aluminium, with a non-slip gripping surface made of soft SEBS incorporating a glass-reinforced nylon core
- Hinge arm is also made of soft SEBS. Internal components and fasteners are primarily made of stainless steel
- Hinge barrel is capped with ABS polymer

**Compatibility:**

- Pressalit PLUS Wall Track, Grooved, 210mm for Left Hand Operated Support Arms (Product code: R9871112)
- Pressalit PLUS Wall Track, Grooved, 400mm for Left Hand Operated Support Arms (Product code: R9873112)
- Pressalit SELECT Toilet Lifters, manual and electric, wall and floor outlets, With Side Profiles

**Warranty:**

- 5 year manufacturer warranty

**Manufacturer product codes:**

- R371385000, R371385112, R371385035, R371385108, R371385277

**Former manufacturer codes:**

- The Pressalit PLUS range has superseded several former Pressalit products
- This item has replaced: R3107, RF107, RF107000, RF107112, RF107026, RF107035, RF107108, RF107277
- Please check for any changes to the product specification
- Please also note that items in the PLUS range cannot be mounted onto older Pressalit wall tracks, and vice versa

# Additional Information

Manufacturer	Pressalit
Type	Hinged Arm Support
WC Projection (mm)	700
Mounting	Pressalit Vertical Track, Pressalit Select Side Profiles
Arm Control	Counterbalanced
Adjustable	Height Adjustable
Length (mm)	850
Surface Finish	Soft & Slip-Resistant - "Not Cool to Touch"
Material	Aluminium
Fixings	Concealed