



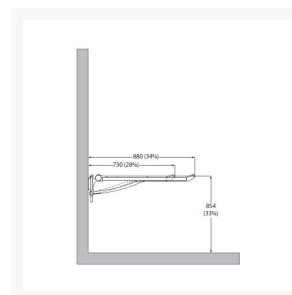
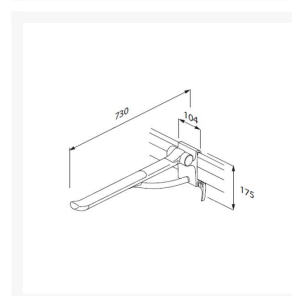
Independent 4 Life

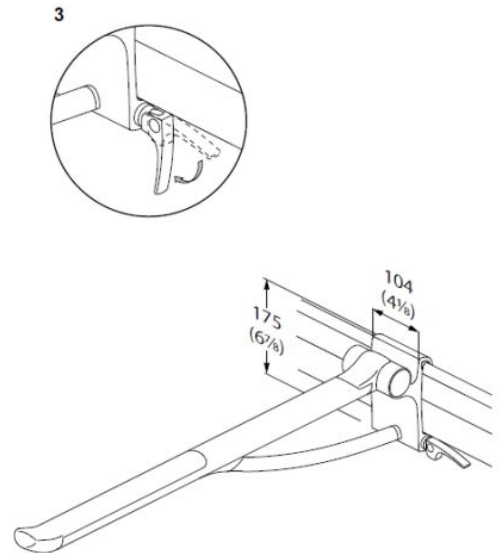
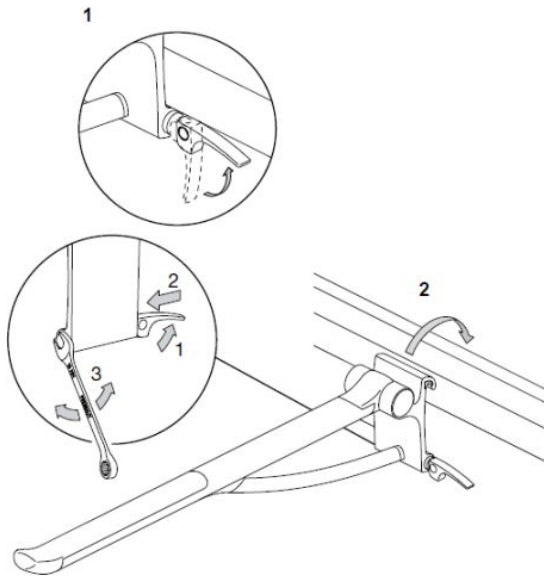
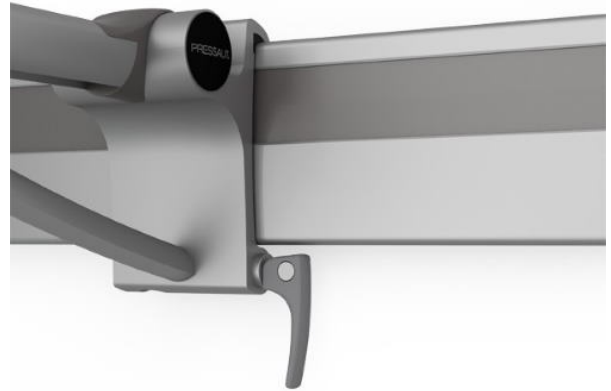
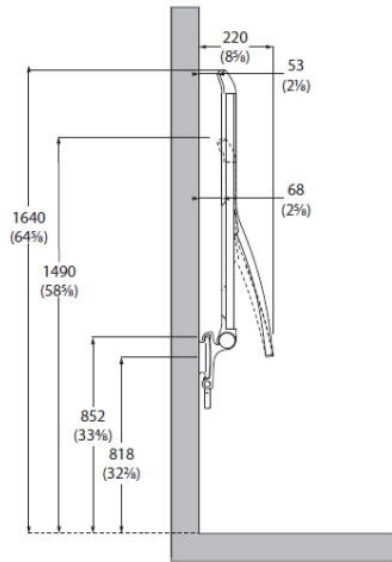
Pressalit PLUS 700mm Counterbalanced Support Arm for Horiz Track - Colour Choice

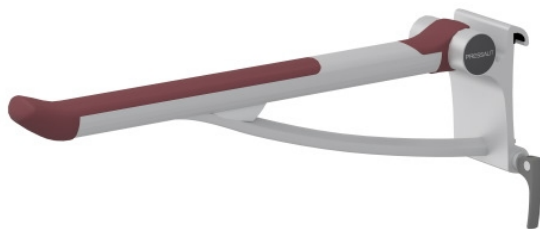
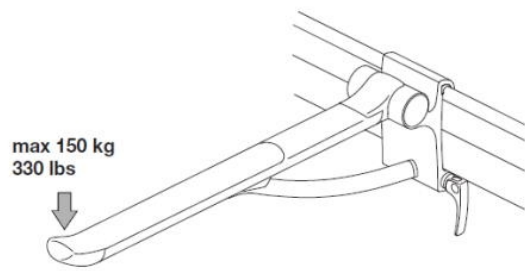
£517.80 Inc. VAT

Product Code: R381470xxx

Product Images







Product Options

Colour	Price Inc. VAT
Pressalit White 000	£517.80
Pressalit Red 035	£570.00
Pressalit Dark Blue 108	£570.00
Pressalit Anthracite 112	£517.80
Pressalit Lime Green 277	£570.00

Description

Pressalit counterbalanced PLUS support arm, 730mm total projection from the wall. Ergonomically shaped to provide a clear sense of where the support arm ends. Sideways adjustable. Detachable and foldable.

The support arm is used as a support for sitting down or getting up from a toilet, or for sideways transfer from a wheelchair.

The oval shape gives an easy and comfortable surface to lean and push against.

Mounts on the horizontal PLUS wall track (not included) allowing the user to slide the arm e.g. from the toilet to a shower.

Suitable for use with toilet pans projecting 540/550mm from the wall.

Key benefits:

- For fitting to the horizontal PLUS wall track (not included)
- 700mm actual support arm length
- 730mm total projection from the wall
- Counterbalanced mechanism that prevents the support arm moving unless guided up or down
- Manual adjustable sideways movement
- Easy lift on/off horizontal track
- Right-hand operated - handle is positioned to the right of the grabrail
- Can be folded against the wall when not in use to create more room space
- Ergonomic grip for weak hands
- Soft and slip-resistant material that has a warm feel
- The oval shape gives an easy and comfortable surface to lean and push against
- The end of the support arm is enlarged so that it is easier to pull forward from a sitting position
- Provides a clear sense of where the support arm ends
- The underside is shaped for the mounting of various accessories
- For indoor use in a wet environment, such as a bathroom or a washroom, in private homes, nursing homes and hospitals
- Range of colours available

Counterbalanced mechanism:

- Prevents the support arm moving unless guided up or down
- For example, if you take it to 45° it will stay at 45° until you push it back up or pull it down further

Technical details:

- Total projection from wall, including wall track (not included) (mm): 730
- Support arm length (mm): 700
- Top of rail distance from the wall when folded (mm): 53
- Inner grab distance from the wall when folded (mm): 68
- Total arm projection - Distance from the wall when folded (mm): 220
- Height off the floor to the top of arm at the recommended installation height (mm): 854
- Total height of arm when folded at the recommended installation height (mm): 1490
- Recommended height of horizontal wall track (not included) (mm): 852
- Right hand mounted, lever lock
- For use with toilet pans projecting from the wall (mm): 540/550
- Max. load (kg): 150
- Weight (kg): 2.78

Materials:

- The arms are primarily constructed in 10-micrometre anodized aluminium, with a non-slip gripping surface made of soft SEBS incorporating a glass-reinforced nylon core
- The hinge arm is also made of soft SEBS. Internal components and fasteners are primarily made of stainless steel

Warranty:

- 5 year manufacturer warranty

Manufacturer product codes:

- R381470000, R381470035, R381470108, R381470112, R381470277

Please note:

- Items in the PLUS range cannot be mounted onto older Pressalit wall tracks, and vice versa

Additional Information

Manufacturer	Pressalit
Type	Hinged Arm Support
WC Projection (mm)	540/550
Mounting	Pressalit Horizontal Track
Arm Control	Counterbalanced
Adjustable	Sideways Adjustable
Length (mm)	700
Surface Finish	Soft & Slip-Resistant - "Not Cool to Touch"
Material	Aluminium
Fixings	Concealed