



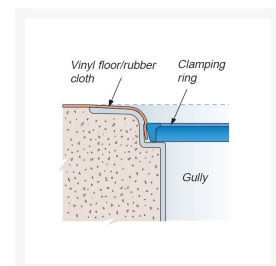
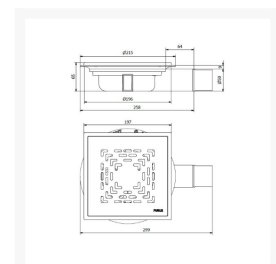
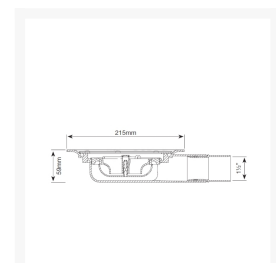
Independent 4 Life

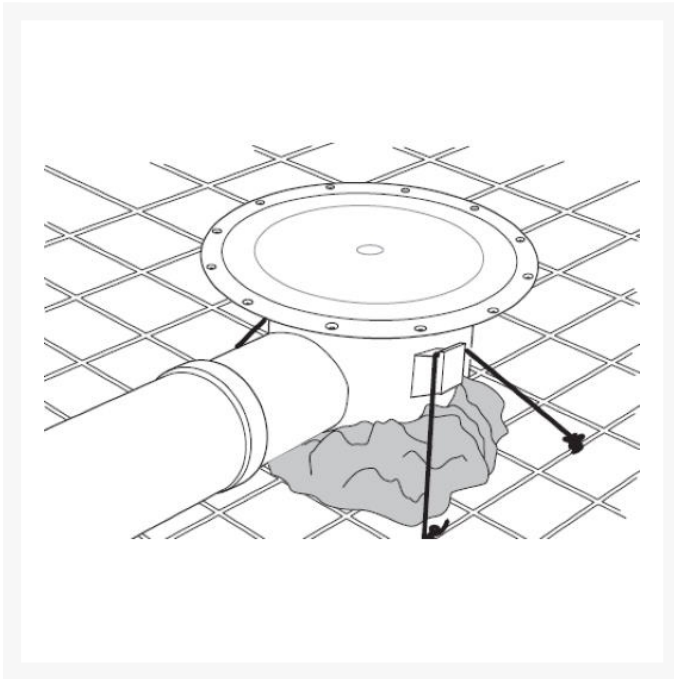
£133.90 Inc. VAT

Purus 59mm S-Series Minimax Floor Gully, Horiz Outlet, 200mm Sq. Tile Frame, Art Deco Grate

Product Code: 7110406T

Product Images





Description

S-Series Minimax Purus 1-part gulley has an extra-low profile of 59mm, specifically designed for installation in concrete / screed floors with a tiled floor finish.

Ideal for domestic and commercial wet room floors.

Key benefits:

- Low profile waste, reduces volume of concrete / screed required for the floor
- For independent mounting
- NOOD sprung water trap, prevents foul air escaping. The weight of the water opens the trap
- The NOOD water trap is removable for easy cleaning

- Stainless steel clamping ring, with 6 x retaining screws
- The clamping ring retains the Fabric or Butyl Drain Gasket that should be bonded in place as part of your tanking system

Technical details:

- 215mm overall diameter
- Overall height of 59mm
- Horizontal 50mm outlet with 1½" / (40mm) UK adapter
- Flow rate 28.8 litres/minute (0.48 litres/second)
- The gully must be installed horizontally
- Waste material: PP gully with ABS adapter
- Purus grate: Load class K3 (300kg)
- Tiled floors - Purus PK 200 Tile frame 200x200mm, 6mm high. Removable Art Deco design grate (Product Code: RSK 713 83 74)

Installation Guidance:

- The minimum gradient should be 1:150 to ensure the flow of water to the floor trap and no more than 1:50 to reduce the risk of slipping
- A nominal 2% falls is usually used
- Only use a fine and hardened concrete around the gully
- The gully must be installed horizontally. It is designed only to be installed level with the surrounding floor
- Only use a fine and hardened concrete around the gully
- Tiled flooring - The clamping ring retains the Fabric or Butyl Drain Gasket that should be bonded in place as part of your tanking system, see PDF installation instructions

Additional Information

Manufacturer	Purus
Configuration	Gravity Waste
Installation	Concrete / Screed Floors
Application	Screed Floors
Waste Diameter (mm)	215
Waste Outlet / Depth (mm)	Horizontal
Flow Rate / l/min	28
Floor Finish	Tiled Flooring
Grate Material / Finish	Stainless Steel / Art Deco