



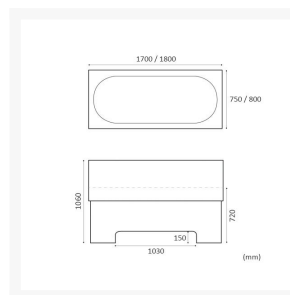
Independent 4 Life

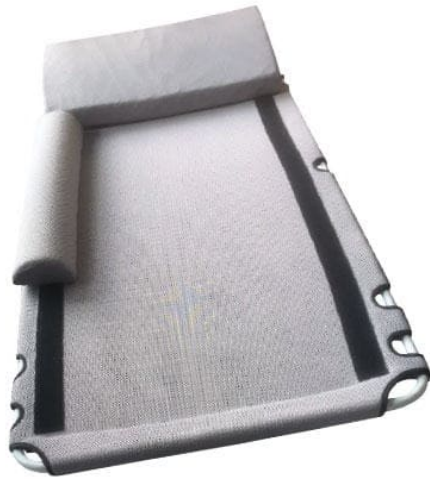
Renaissance Excel 400 Height ADJ Bath, Full or Hoist Panels - Choice of Size & Waste

From: £4,741.50
To: £13,703.49
Inc. VAT

Product Code: EXCEL400

Product Images





Pair of Lever Bath Taps



Bath Filler

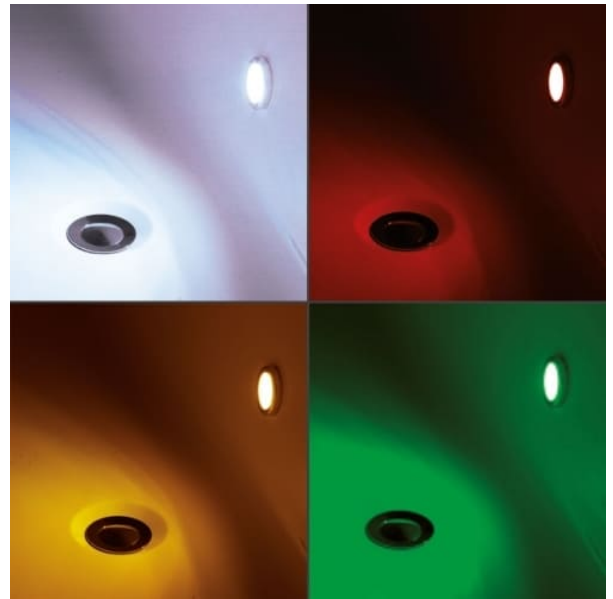


Bath/shower Mixer with
Top-Fixing Shower Hose



TMV3 Underbath
Valve





Product Options

Step 1) Size / Front Panel / Waste

Excel 400 - 1700x750mm, Full Panels & End Waste

£3,806.25



The Renaissance Excel 400 with 340mm of height adjustment, helps to prevent carers from hurting their backs while assisting and washing client users. The bath does not feature a seat. Supplied with Full front and rear panels, this bath is designed for use with ceiling track hoists, slings and/or cradles. 1700x750mm with an end waste. Optional luxury mesh changing top with head and side supports. Tap and shower options with TMV2 and TMV3 temperature control. Optional 12 Jet Air Spa system, Colour-changing Lights and Bluetooth audio. Max load: 30st / 185kg. Manufactured in the UK.

Excel 400 - 1700x750mm, Hoist Panels & End Waste

£3,806.25



The Renaissance Excel 400 with 340mm of height adjustment, helps to prevent carers from hurting their backs while assisting and washing client users. The bath does not feature a seat. With hoist panels (front and rear) this bath is designed for use with mobile hoists and ceiling track hoists with slings and/or cradles. 1700x750mm with an end waste. Optional luxury mesh changing top with head and side supports. Tap and shower options with TMV2 and TMV3 temperature control. Optional 12 Jet Air Spa system, Colour-changing Lights and Bluetooth audio. Max load: 30st / 185kg. Manufactured in the UK.

Excel 400 - 1700x750mm, Hoist Panels & Centre Waste

£3,806.25



The Renaissance Excel 400 with 340mm of height adjustment, helps to prevent carers from hurting their backs while assisting and washing client users. The bath does not feature a seat. With hoist panels (front and rear) this bath is designed for use with mobile hoists and ceiling track hoists with slings and/or cradles. 1700x750mm with a centre waste. Optional luxury mesh changing top with head and side supports. Tap and shower options with TMV2 and TMV3 temperature control. Optional 12 Jet Air Spa system, Colour-changing Lights and Bluetooth audio. Max load: 30st / 185kg. Manufactured in the UK.

Excel 400 - 1800x800mm, Full Panels & End Waste

£4,131.00



The Renaissance Excel 400 with 340mm of height adjustment, helps to prevent carers from hurting their backs while assisting and washing client users. The bath does not feature a seat. Supplied with Full front and rear panels, this bath is designed for use with ceiling track hoists, slings and/or cradles. 1800x800mm with an end waste. Optional luxury mesh changing top with head and side supports. Tap and shower options with TMV2 and TMV3 temperature control. Optional 12 Jet Air Spa system, Colour-changing Lights and Bluetooth audio. Max load: 30st / 185kg. Manufactured in the UK.

Excel 400 - 1800x800mm, Hoist Panels & End Waste

£4,131.00



The Renaissance Excel 400 with 340mm of height adjustment, helps to prevent carers from hurting their backs while assisting and washing client users. The bath does not feature a seat. With hoist panels (front and rear) this bath is designed for use with mobile hoists and ceiling track hoists, slings and/or cradles. 1800x800mm with an end waste. Optional luxury mesh changing top with head and side supports. Tap and shower options with TMV2 and TMV3 temperature control. Optional 12 Jet Air Spa system, Colour-changing Lights and Bluetooth audio. Max load: 30st / 185kg. Manufactured in the UK.

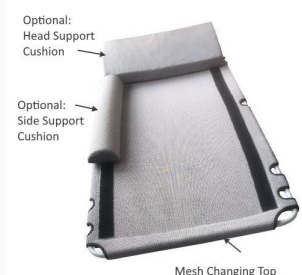
Step 2) Optional - Removable luxury changing mesh top



Luxury Changing Top (Use with 1700x750mm end waste bath) - Excel 100 and 400

£1,028.57

Removable changing top, for use with 1700 x 750mm End Waste Baths, Renaissance Excel 100 and 400. Machine washable mesh top. Optional Head and Side Cushions.



Luxury Changing Top (Use with 1800x800mm end waste bath) - Excel 100 and 400

£1,135.71

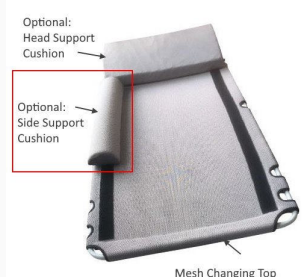
Removable changing top, for use with 1800 x 800 End Waste Baths, Renaissance Excel 100 and 400. Machine washable mesh top. Optional Head and Side Cushions.



Head Rest

£369.60

Soft removable headrest for the Renaissance luxury changing top. Machine washable cover, for Excel 100 and 400 Baths.



1x Side Cushion

£257.70

Soft removable side cushion for the Renaissance luxury changing top. Machine washable cover. For the Excel 100 and 400 baths.

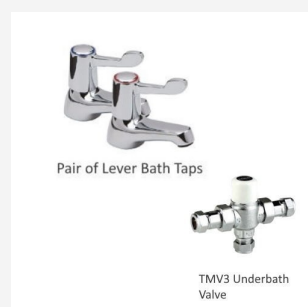


2x Side Cushions

£514.80

Pair of soft removable side cushions for the Renaissance luxury changing top. Machine washable covers. For the Excel 400 and 100 baths.

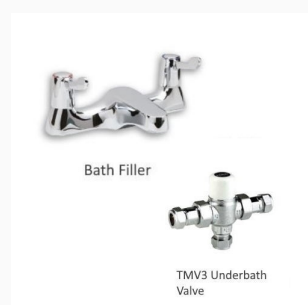
Step 3) Optional - Taps / Shower



Lever Taps (Pair) with TMV3 Under Bath Valve

£253.50

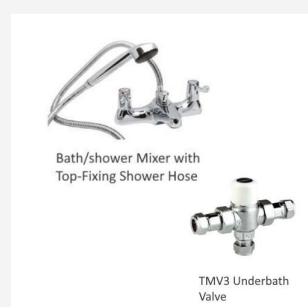
Pair of Lever Taps with under bath TMV3 valve for thermostatic temperature control. Supplied fitted and plumbed with bath.



Deck Mounted Filler with TMV3 Under Bath Valve

£286.00

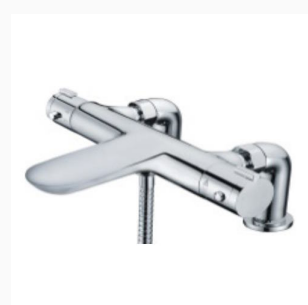
Deck Mounted Bath Filler with under bath TMV3 valve for thermostatic temperature control. Supplied fitted and plumbed with bath.



Bath/Shower Mixer, Shower Kit with TMV3 Under Bath Valve

£362.70

Bath / Shower mixer with a top fixing shower hose and shower kit, with a TMV3 under bath valve. Supplied fitted and plumbed with bath.



TMV2 Bath/Shower Mixer with Shower Kit

£377.00

Deck mounted TMV2 bath / shower mixer with bottom exit hose and shower kit. (Not suitable for use with Excel 400 with Changing Top). Supplied fitted and plumbed with bath.

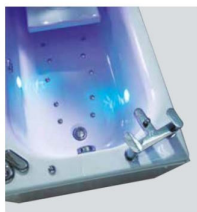


TMV3 Shower System with Shepherd's Crook, CAT5 Fluid Safe

£663.00

Renaissance TMV3 Shower System with Shepherd's Crook, CAT5 Fluid Safe, with deck mounted Hot and Cold shower control valves. The Shepherd's Crook prevent the shower hose entering the bath water, thereby preventing back syphoning and contamination of the water supply. Supplied fitted and plumbed with bath.

Step 4) Optional - Sensory additions



12 Jet, Three Speed, Air Spa System

£585.00

For Renaissance Lenis, Valens, Talis and Excel baths. Push button air spa, 12x jets, 3x speed heated air bath system. A relaxing jacuzzi effect with auto-dry.



2x Chromotherapy Colour-changing Lights

£390.00

Factory fitted, chromotherapy underwater colour-changing lights, relaxes the user while bathing. 2x control settings; one allows the colours to change continually, the other holds it on a specific colour.



Bluetooth Audio System



Bluetooth Wireless Audio System

£715.00

Bluetooth Audio System, with a built-in speaker system that uses the bath as an amplifier, allowing you to stream music from any Bluetooth enabled device. The chrome knob is for the volume control.

Step 5) Delivery - UK Mainland



Standard 1x Person Curb-side Delivery

£145.00

UK Mainland - Standard One Man bath Delivery, for Curb side delivery only.



2x Person Delivery to a Ground Floor Bathroom

£200.00

UK Mainland - Two Man Delivery to Ground Floor Bathroom (Excel Baths - Delivery)

Step 6) Optional: Commissioning



LOLER Power Bath Commissioning

£150.00

Select this option to have your bath commissioned by a Renaissance installer. (Excludes installation). A highly recommended service for all powered Renaissance baths. The LOLER inspection ensures safe use of the bath and for the manufacturer warranty.

Description

In cases where a seat is not required to get the bather in and out of the bath, where ceiling track hoists, mobile hoists, slings and/or cradles are being used, the Excel 400 is the solution.

This height adjustable bath prevents repetitive strain on the carer's back, as the bath can be raised or lowered to the carer's desired position.

This bath can be supplied with a full panel if the mobile hoist access panel is not required.

Free site visit and demonstration available - please contact us

Key benefits:

- Height adjustable bath, with a stepless range of 340mm
- Includes all panels: 1x front and 1x rear panels, 2x end panels
- Electrically operated with battery backup for client evacuation, in the event of power failure
- Chrome pop-up waste in a choice of position - opposing end of seat or centre
- Bath height in raised position (mm): 1060
- Bath height in lowered position (mm): 720
- Front panel cut-out for hoist access (mm): 1030 L x 150 H
- Safe-working Load 30st / 185kg
- Acrylic bath shell, manufactured in the UK, CE compliant

Handset:

- Easy to use
- The "Bath up" button raises the bath to a comfortable height
- The "Bath down" button lowers the bath after bathing
- The bath can be stopped at any height by simply lifting your finger off the button

Optional Luxury changing top for use with hoists:

- Removable changing top, with removable machine washable mesh cover. The optional head and support cushions are shown in the image
- Luxury Changing Top (For use with 1700x750mm end waste bath)
- Luxury Changing Top (For use with 1800x800mm end waste bath)
- Head support cushion for the changing top, provides the bather greater comfort
- Side support cushion for the changing top, provides the bather greater security

Choice of Hoist or Full Front / Rear Panel:

- Select as required
- Hoist access front / rear panel or Full front / rear panel

Tap options, supplied fitted and plumbed:

- Pair of Lever Taps with Underbath TMV3 Valve - WRAS approved
- Bath Filler with Underbath TMV3 Valve - WRAS approved. Giving you the ability to control the water temperature through one outlet
- TMV2 Bath/Shower mixer is popular in a domestic situation, Ideal if the bath is used primarily by one person. (Not suitable for commercial installations i.e care homes)
- Bath/shower Mixer with Top-fixing shower with Underbath TMV3 Valve - WRAS approved
- If taps are NOT selected, the bath will be supplied with tap holes undrilled

Shower option: Note: A bath filler not included

- TMV3 Shower System CAT5 Fluid Safe (Shepherd's Crook) is the necessary choice in multi-user situations for commercial installations i.e. care homes

Sensory options:

- To make the bathing experience more enjoyable and relaxing, the bath can be customised with three sensory systems:

Optional Air Spa System:

- The Air Spa system has 12 jets in the base of the bath and has three settings and auto-dry
- 1 - Pressing the button once gives a gentle massage effect
- 2 - Pressing it again gives a stronger massage
- 3 - Pressing it a third time gives a vigorous massage
- 4 - A fourth press switches the system off
- Once the bath has drained, the system will briefly operate to dry out the jets
- Note: The Air jets are not recessed and are "proud" of the surface of the bath

Optional Colour-changing Lights:

- Pair of Chromotherapy Colour-Changing Lights
- These can be set at one specific colour, by pressing the "manual" button
- Pressing the "auto" button the lights slowly change from one colour to another flooding your bath with soothing light

Optional Bluetooth Wireless Sound System:

- The Bluetooth Audio system allows you to connect wirelessly to a system so that you can listen to music or audio books; whatever is your preference

Delivery:

- Standard delivery - one man delivering to curbside
- Two man delivery - delivery to ground floor bathroom
- Please contact us if the intended location of the bath is beyond the ground floor or is difficult to access

Commissioning:

- Commissioning by Renaissance ensures correct installation and training on safe use of the bath
- This is optional for domestic installations, but is essential for commercial properties to maintain LOLER compliance
- Ongoing Service and Maintenance Packages are available to ensure a trouble-free, long-term future

Electrical requirements:

- 230V AC supply - requires a 30mA RDC with a 4A waterproof switched fused spur (not supplied)
- Supplied with a standard UK 3 pin plug for testing and setting up purposes, this must be removed and wired to your 4A waterproof fused spur
- Backup battery requires a continuous power supply to maintain the batteries condition
- All electrical installations should be performed by a qualified electrician

Warranty:

- Mechanical and electronic components have a full 12 month warranty
- Bath shell has a 25 year manufacturer guarantee against material and manufacturing defects

Please note:

- These baths are custom-made, once the manufacturing process has begun, we cannot accept returns
- Upon placing your order you will be required to complete and return an order form prior to manufacture

Manufacturer product codes:

- 11775XL4EF, 1775XL4EH, 1775XL4CH, 1880XL4EF, 1880XL4EH

Additional Information

| | |
|--------------|--|
| Manufacturer | Renaissance Baths |
| Model | Excel 400 |
| Length (mm) | 1700, 1800 |
| Width (mm) | 750, 800 |
| Technologies | 12 Jet, Three Speed, Air Spa System, Still Water, Bluetooth Sound System, Chromotherapy 2x Lights, Changing Mesh Top, Taps & Showers |
| Bath Seat | No |