



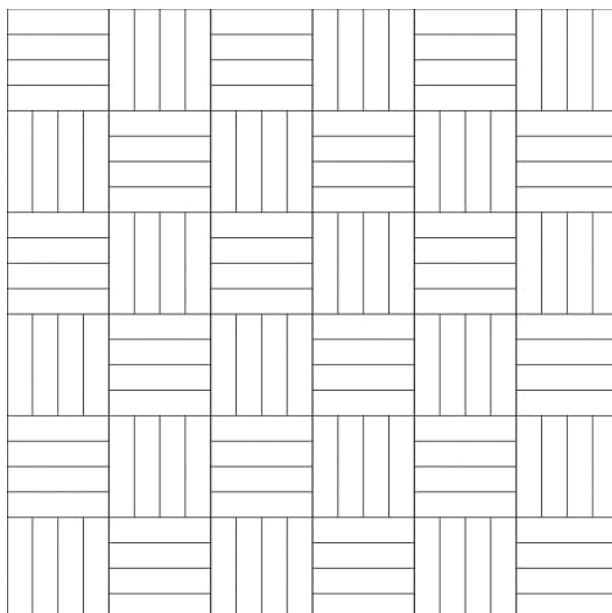
Independent 4 Life

Showerwall Acrylic Wall Panels - Square Parquet White - Choice of Panel

£456.80 Inc. VAT

Product Code: SCA49

Product Images



Acrylic Collection panels from **Patterns & Tiles and Prints & Images** measure **2400mm** in height, and are available in either **896mm** or **1200mm** widths.

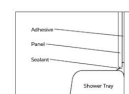


All Acrylic panels are 4mm in thickness.

PANELS

Showerwall Acrylic panels must be fitted to a continuous surface such as plaster board, existing tiling, plywood or tile boarder boards providing the surface is sound, plumb and level. Some surfaces do require pre-treatment before installation. Tiles should be de-greased and fresh plaster should be sealed with a proprietary PVA sealer. It is important to ensure that there are no areas of wall to be clad where there are distinct differences in colour, such as tape lines in plaster boarding and grout lines in tiling as these can show through when installing lighter colour decor.

A 3mm-Air gap should be left at the top and the bottom of the panel achieved using spacers, the gap then filled with showerwall silicone sealant. This allows the both of shower tray to expand and contract.



CUTTING ADVICE

For best results use a plunge saw fitted with an appropriate rail guide to protect the panel.

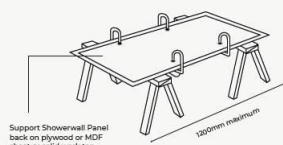
Always cut the panel decorative side face up on a flat supported surface, using clamps secure the panel in place and transfer your cutting marks to the panel, use of masking tape is ideal for this. If using a circular saw cut the panel decorative face down into a sacrificial board.

Set your saw depth to 5mm material depth (to include rail dimensions). Use of a brand new blade will help to avoid excessive chipping and chattering, fine (48 minimum) teeth triple chip blades are ideal for cutting your compact Showerwall panels.

Cut in one single pass, 3000-4500rpm in a slow measured action ensuring debris does not clog the blade, use of extraction is advised!

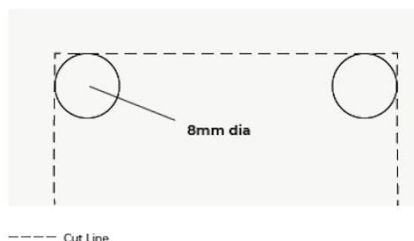
If using a circular saw please take appropriate steps to protect the decorative face of the showerwall acrylic panel, for best results cut the material face down on a sacrificial board and fully supported.

A Router can also be used if preferred for cutting using a suitable guide, straight TCT fluted cutter should be used with a cutting speed of 4500m/min.



CUT-OUTS

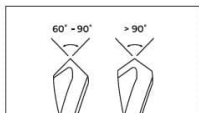
Shaped cut outs can be formed by drilling 8mm diameter holes in the corners of the required shape and then cutting between using a jigsaw with an acrylic blade. Support the panel at all times during cutting and handling. With all cut outs a radius of at least 4mm must be left in the corners failure to do this can lead to prevent the acrylic to cracking.



DRILLING

Twist Drills HSS twist drills specifically made for metals or plastics can be used and will have a point angle of between 60° - 90°. Standard drill bits which generally have a much flatter point angle can cause the acrylic to crack!

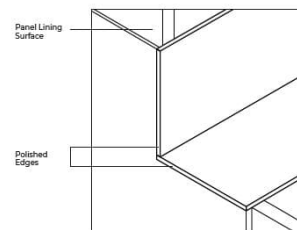
When drilling a slow speed should be selected and the acrylic panel must be fully supported below. Hole saws can be used to cut the Acrylic panels but must be the type designed to cut metal sheet and the pilot drill must have a point angle of between 60° - 90° as above. The panel must be supported from behind and it is recommended to drill half way through the panel then turn over and finish the hole from the other side, this will prevent the edge from shattering. The edges of the hole should then be de-burred.



EDGE POLISHING

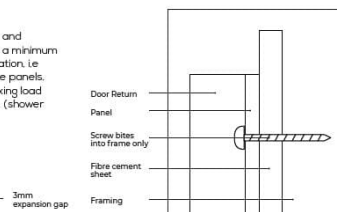
If the panel edge is to be left exposed, it can easily be finished to a polished finish. Always peel back the protective film 25mm from the edge while polishing. Remove any sanding dust between grades immediately using a soft cloth. Start with a 240 grit paper to remove any cutter marks from the machined edge, then process with a 400 grit paper and then finally a 600 grit.

Corner joints can be formed by simply polishing the exposed edges of the acrylic panel.



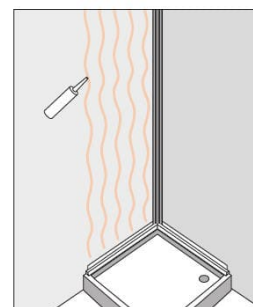
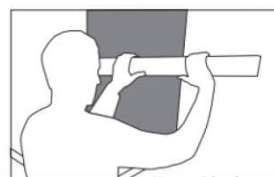
EXPANSION

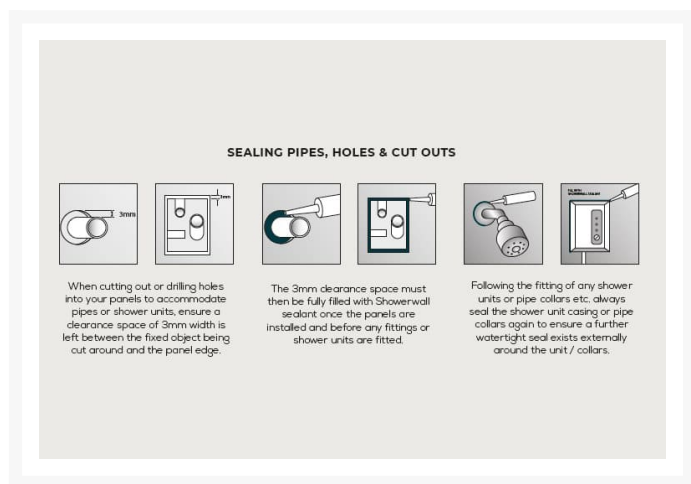
Showerwall Acrylic panels are subject to expansion and contraction in their normal use and as such require a minimum 3mm expansion gap to be planned into your installation, i.e. internal corners, fixed items, fixing items through the panels. Noting that the panels are not structural and the fixing load should be fully secured in the supporting substrate, (shower screens, handles, valves etc. Shower screens).



SEALANT

Apply a minimum 6mm bead of Showerwall clear silicone in vertical wavy lines approximately 100mm apart where the showerwall acrylic panel will be fixed. Ensuring an even coverage to avoid excess amounts of sealant in one place.





Product Options

Panel Size (mm) / Side Edges	Price Inc. VAT
896 x 2400 x 4 / Square Cut	£456.80
1200 x 2400 x 4 / Square Cut	£553.07

Additional Options

Product Code / Showerwall Silicone Options	SHWL-006 / Translucent Sealant (for bonding panel to wall) - 300ml tube	£10.50
	SHWL-004-WT / White Sealant (colour match panel sealant) - 290ml tube	£14.50
	SHWL-004-BK / Black (colour match panel sealant) - 290ml tube	£14.50

Description

Showerwall acrylic wall panels are decorative wall panels, that can be used in all areas in your home including bathrooms, wet rooms, kitchens, and utility rooms. Ideal for almost any vertical surface with multiple sheets.

Manufactured from a 4mm thick acrylic sheet that is rear printed to create a polished glass-like finish.

This material is 100% waterproof therefore does not require any trims, panels are simply joined together using sealant.

The Showerwall neutral cure translucent silicone sealant should be used when adhering and sealing your panels to the wall.

This is the Square Parquet White décor from the Showerwall Acrylic Collection – Patterns & Tiles.

The Tiles style, create beautiful tiled walls, without the hassle. If you love the look of tiles but want to avoid the demanding maintenance or high cost of installation, this collection is for you. With both square and delicately shaped tiles, this varied collection is a beautiful alternative.

Free samples available - [click here to contact us](#)

Key product benefits:

- Glass-like finish
- Simply cut the panels to size and fix them to the wall or over existing tiles
- Fast and hassle-free installation, saving money on installation costs compared to tiles
- Non-porous, wipe-clean, hygienic surface
- 100% waterproof, no need for extra trims
- Performs well against the rigours of daily life
- Less mess and a much faster fit than tiles
- For internal use only, not suitable for saunas or steam rooms
- Choice of 2x panel sizes with Square cut edges
- Pattern Matched Design and printed in the UK to order
- Colour match sealant, also available
- Please refer to the PDF Showerwall Product Brochure and Acrylic installation instructions for more information

Panel sizes and weights:

- When ordered - you will be asked to confirm your panel layout to ensure the print pattern matches, the next panel
- Both panels are 2400mm high and 4mm thick
- Square cut panels: Simply butt to the next panel (requires flat surfaces)
- Square Cut - 896mm Width - 10.5kg
- Square Cut - 1200mm Width - 14.3kg

Panel specification:

- Specific Gravity: ASTM D792, 1.2
- Tensile Strength: D683, 0.3-0.4kg/cm²
- Compressive Strength: D695, 1200kgf/cm²
- Bending Strength: D-790, 1200kgf/cm²
- Rockwell Hardness: D785, M-100

Showerwall acrylic sealant:

- Acrylic silicone sealant for sealing acrylic wall panels to create a waterproof shower and bathroom installation
- Use Showerwall Translucent silicone (SHLW-006) to bond and adhere the panel to the wall
- Recommended colour to join and finish the wall panels: White (SHWL-004-WT) and Black (SHWL-004-BK)
- See Product Code: SHWL-004-xx for the full range of colours
- For more information download the PDF Acrylic Sealant Matrix

Size tolerances:

- The panels will expand and contract with temperature fluctuations
- Width: +/- 5.0mm
- Height: +/- 5.0mm
- Thickness: +/- 0.5mm

- Ensure 3-4mm expansions gaps should be left at the top and the bottom of the panel

Fire ratings / performance:

- Heat Distortion: D684, 100°C
- Heat Distortion Temp: ASTM D 648, 100°C
- Vicat Softening Point: D1525, 118°C
- Reaction to Fire: EN13501-1, Class E
- Smoke Density: ASTM D 2843, 10.3%
- Thermal Conductivity: D1525, 118°C

Warranty:

- 30* year limited domestic residential use manufacturing defect guarantee
- 5-year limited manufacturer defect guarantee, for commercial installations
- Please note: Showerwall Acrylic panels must be fitted in accordance with the fitting instructions, and you must use Showerwall translucent silicone sealant
- *For Domestic installations, panels must be registered within 28 days of install or the warranty will only be valid for 15 years - please visit www.showerwall.co.uk to register your panels

Showerwall Disclaimer:

- **The panels are printed to order and are non-returnable**
- Do not use any form of abrasive cleaner
- Do not any form of bleach products to clean panels, the harsh chemicals may affect the surface of your panel and sealant
- Due to variations in the photographic and printing processes, the colours shown on this website may vary when compared to the actual product
- Showerwall acrylic collection décor may be subject to slight colour shade, and or patternation variances when installed onto walls that have significant colour difference to the décor chosen or due to lighting effects within the installed room. Please check the product instructions for further information
- It is recommended that actual product samples or retailer displays are viewed prior to purchase. We reserve the right to amend the specification of the products shown without prior notice. E&OE
- Failure to use Showerwall acrylic silicone sealant invalidates the Showerwall Guarantee

Additional Information

Manufacturer	Showerwall
Range	Acrylic Collection
Surface Finish of Panel	Acrylic
Style	Patterns & Tiles
Panel Décor	Square Parquet White