

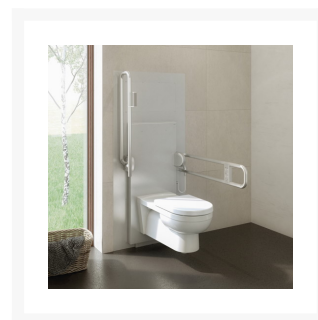
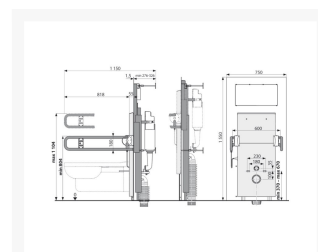


Independent 4 Life

Alca Medic Assist, Pre-Wall, ELECT Height ADJ Toilet Pan Lifter w/ Support Arms

Product Code: AM101/1500L

Product Images



Description

Alca self-supporting frame for mounting disabled Doc M and comfort height wall hung WC pans. The 900mm wide frame has panels either side for folding support arms for reduced mobility users.

Compatible all ALCA flush plates: Basic, Sensor and NIGHT LIGHT.

www.independent4life.co.uk | info@independent4life.co.uk | Tel: 0800 500 3001 | VAT No: 942447711

EORI GB942447711000

Installation depth 125mm, frame height 1120mm for installation in front of a support wall or within a partition framed wall with a plasterboard finish and a floor thickness of 0-200mm. For toilet pans with a connecting pitch of 180mm or 230mm. Prepared for connecting a bracket with a DG 1/2" conversion for bidet seats, shower toilets, and sprays.

Key benefits:

- Frame for hanging wall-hung WC pans, with panels either side for folding support arms for reduced mobility users
- Dual flush independently adjustable with hygienic reserve
- Compatible all ALCA flush plates: Basic, Sensor and NIGHT LIGHT
- Polystyrene insulation prevents condensation forming and dampens vibrations
- Visible marks for both levelling and the centerline
- Installation depth 125mm
- Installation depth adjustable from 20-95mm
- Tilt the cistern for easy installation in timber frames
- Can be installed in a partition, in front of the bearing wall
- The fitted frame should be covered with a plasterboard panel
- Adjustable anchor feet and a spring-lock system, range of 0-200mm
- The service opening cover simplifies assembly and prevents the penetration of moisture and impurities
- Suitable for installation of remote or sensor flushing
- The cistern is made of one piece, thus ensuring 100% impermeability
- Sliding rail holder for the waste connector can be set to eight positions between 0-93mm
- Water supply from the rear/top
- Angle valve with the ability to connect to the Mepla piping system
- Dispenser for WC cistern tablets included
- Maintenance work without using any tools
- Frame material: powder-coated metal

Scope of supply:

- Fixings for WC pan: threaded rod 2x M12, 4x washers, 2x covers, 2x nuts, & 2x thread protectors
- Fixation set: 4x screws Ø8x60, and 4x dowels Ø12
- Elbow waste connector HT 90/110 polyethylene, PE-HD
- 2-piece cover of the service opening is simply adjustable
- Cistern with fill and flush valve
- End-caps for protecting the connecting holes during installation of the system
- Set for inserting toilet tablets
- Self-supporting frame
- Flushing mechanism screw x2
- Fittings 1/2" water connection with the integrated angle valve Schell 1/2-3/8"
- Drainage seal, PP connector, connector seal
- Inlet seal, PP outlet, wrapping seal

Warranty:

- 15 year manufacturer

Additional Information

Manufacturer	Alca
Brand / Model	Alca / Medic Assist
Height ADJ Range (mm)	300
Colour	Polished Stainless Steel
Installation Type	Exposed
Flush Operation	Front Actuator, Front Push Button Flush, Front Sensor Flush
Operation	Fixed Electric Buttons
Waste Outlet Position	Wall - Rear
Support Arms	Yes - Fixed Folding Arms