



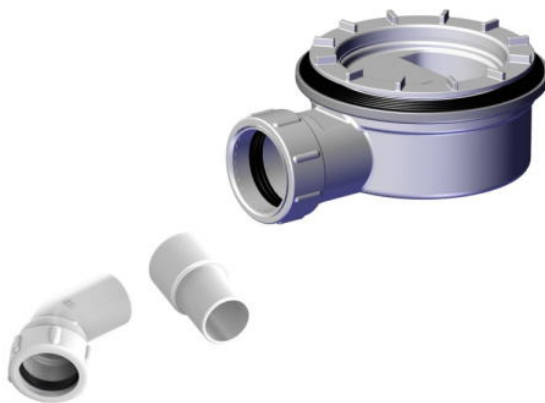
Independent 4 Life

AKW DW90 Waste (Dry) for Onyx Tray (UK)

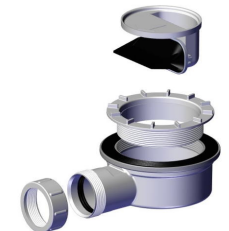
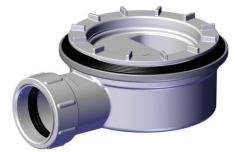
£70.63 Inc. VAT

Product Code: 25496-UK

Product Images



16-006-058
Pipe Adaptor Kit



Description

The DW90 low level dry waste has been redesigned in to fit AKW Onyx Shower Trays.

A compact waste, the non-return valve prevents bad odour backflow and will not dry out from sporadic use.

Key benefits:

- 90mm (Suitable for Onyx Trays) - Very Compact
- Non-return valve - Prevents bad odour backflow
- Trap will not dry out with sporadic use
- Top access for easy cleaning and maintenance
- High flow rate
- Once installed the waste cover of the Onyx tray (not included) conceals the waste
- Shallow 54mm depth - Useful for solid floors
- Includes Pipe Adapter Kit (Product Code: 16-006-058)
- Meets performance requirements of British Standards, BS EN 274 Part 2:2002
- Meets the performance requirements of British Standards - Ensures product is fully compliant and safe for site requirements

Warranty:

- Lifetime Warranty (please refer to AKW's terms and conditions)

Additional Information

Manufacturer	AKW / Contour
Configuration	Gravity Waste
Compatible Tray or Former	AKW - Tri Form, AKW - Onyx
Installation	Concrete / Screed Floors, Timber Floors, Shower Tray
Application	Shower Tray, Tri Form, Screed Floors, Timber Floors
Waste Diameter (mm)	90
Waste Outlet / Depth (mm)	Horizontal
Flow Rate / l/min	30
Floor Finish	Shower Tray
Grate Material / Finish	Plastic / White