

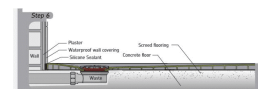
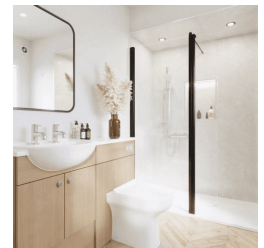
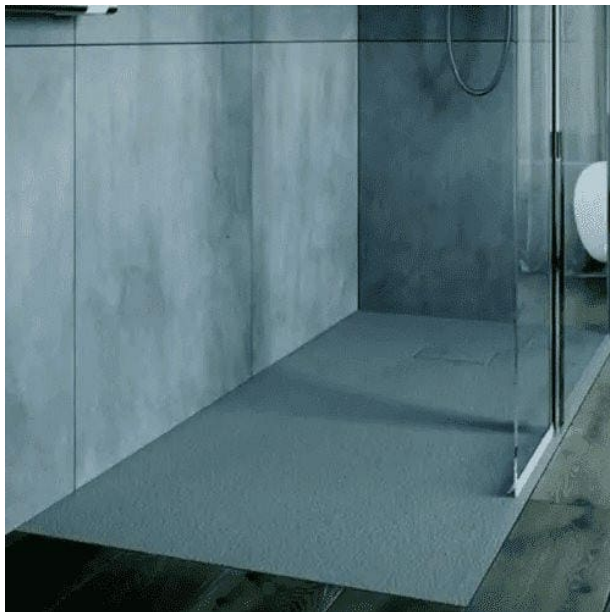


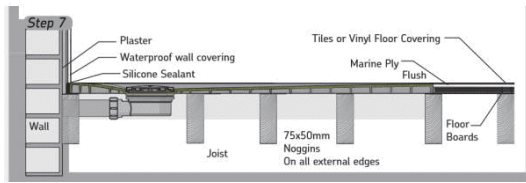
Independent 4 Life

AKW Onyx Shower Tray, Choice of Size & Waste - Grey

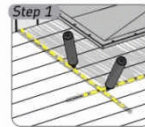
Product Code: ONYX-GRY

Product Images





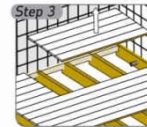
Installing into Wooden Floors



1. Position the tray over the desired location for the shower and mark around the edge of the shower former.



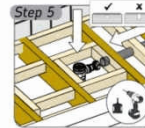
2. Cut into the flooring, taking care not to cut through supporting joists or any plumbing or electrical wiring.



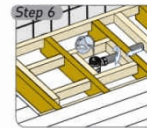
3. Carefully remove the floor boards. Locate the waste outlet pipe.



4. The waste area must be supported with additional noggins 220mm around the waste. Additional noggins or joists must be used on all edges and between joists, centres at a minimum of 350mm.



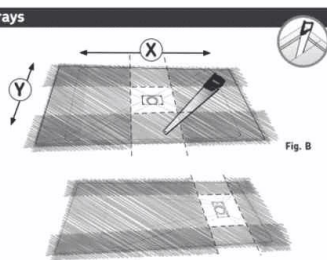
5. Do not cut into the joists, always drill through when installing the waste drain trap and waste outlet pipe.



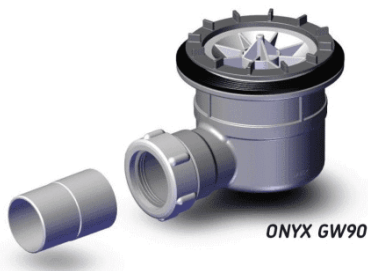
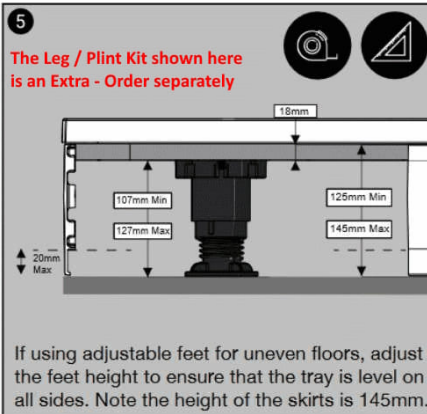
6. Water test the waste drain trap for flow and for any leaks and ensure that the rubber seals are in place.

Installer Information - Trimmable trays

- Tray height: 26mm
- Slate finish
- Concealed waste
- Colour coordinated waste cover with slots
- Shallow depth waste
- High water flow rate (30 l/min)
- Weight load: 200kg
- Impact resistance
- Webbed back reinforcements
- Material: SMC (Sheet Moulding Compound)



Trimmable (within 150mm of waste)
If trimming is absolutely necessary to avoid obstructions or tricky installations then Onyx trays can be trimmed down to 150mm of the waste cover area. The sides on the tray X and Y shown in Fig. B are shaded out to show the trimmable areas.





Product Options

Tray Size (mm)

800x800

900x900

1000x800

1200x800

1200x900

1400x800

1600x800

1700x800

1800x800

Additional Options

AKW Product code / Waste type	No Waste - If ordering the Tray Leg Kit the GW90 Gravity Waste is Included
	25495 / PW90 22mm Pumped Waste
	25494 / GW90 Gravity Waste 56.06
	25496-UK / DW90 Dry Waste & Pipe Adapter Kit

Description

Grey slate effect AKW Onyx Shower Tray is perfect for a modern level access or step in shower for corner or alcove installations. With a large range of sizes, the trays are unhandled. The concealed centre waste is positioned approx. 200mm from the end of the tray. To avoid joists and for easier installation the tray can be trimmed down to within 150mm of the waste.

This SMS manufactured shower tray is 26mm thick is for timber and screed floors and can be recessed for level access, surface mounted for a low step-in or mounted on a colour matching Onyx Tray Leg kit (available separately) when installed with an Onyx shower tray would create a step-in height of 144 to 170mm.

Choice of Onyx GW90 Gravity, DW90 low profile dry waste or PW90 22mm Pumped waste.

The trays slate effect offers a slip resistant surface to decrease the risks of accidents when using the shower.

The tray is compatible with AKW Standard, Larenco, Level Best, Silverdale and Standard screens.

Key benefits:

- Modern, contemporary design tray
- Grey slate finish to improve slip resistance
- Range of tray sizes, select as required below
- Impact resistance and strong
- Lightweight, product weight under 25kg
- Webbed back reinforcements
- Grey colour finish with matching grey waste cover
- High water flow rate (30 l/min)
- Can be recessed or surface mounted
- Suitable for unbreachable floors (order the colour matching sized Onyx Tray Leg kit separately)
- Weight limited 200kg / 31.5 stone

Technical details:

- Low 26mm profile
- Suitable for 'on floor' or 'in floor installations'
- Onyx Tray Leg Kits are available for unbreachable floors – Top of tray height 151 to 171mm
- - Order the colour matching sized plinth kit separately
- Concealed center waste approx. 200mm from the end of the tray
- The tray can be trimmed down to within 150mm of the waste
- Choice of gravity, dry or pumped wastes

- Manufactured from SMC (Sheet Moulded Compound)

Waste options:

Note: If you are ordering the "Onyx Tray Leg Kit" separately "Select no waste". The Tray Leg Kit is supplied with the GW90 Onyx waste

AKW GW90 Gravity Waste

- 50mm deep water trap to meet British Standards
- Prevents bad odour backflow
- 104mm below tray depth required
- Flow rate approx. 30 litre per minute
- Top access for easy cleaning, rodding and maintenance
- Meets performance requirements of British Standards, BS EN 274 Part 2:2002
- AKW Product Code: 25494

AKW DW90 Dry Waste

- Very Compact
- 54mm depth required to the underside of the shower tray
- A non-return valve prevents bad odour backflow
- Will not dry out with sporadic use
- Top access for easy cleaning and ensures easy maintenance
- AKW Product Code: 25496-UK
- Includes 40mm Pipe Adapter Kit (Product Code: 16-006-058)

AKW PW90 22mm Pumped Waste

- Overall depth of waste 66mm
- 44mm depth required to the underside of the shower tray
- Two baffles reduce the noise during showering cycle
- Top access for easy cleaning and ensures easy maintenance
- 22mm JG Speedfit Clip outlet
- Product Code: 25495
- To be used in conjunction with a shower waste pump (not included)

Warranty:

- Lifetime manufacturer warranty

Manufacturer product codes:

- 11892, 11893, 11875, 11876, 11877, 11878, 11879, 11880, 11881, 11882, 11883, 11884, 11885

Additional Information

Manufacturer	AKW / Contour
Model	AKW - Onyx
Tray Size (mm)	800x800, 900x900, 1000x800, 1200x800, 1200x900, 1400x800, 1400x900, 1600x800, 1600x900, 1700x800, 1700x900, 1800x800, 1800x900
Surface Colour	Grey
Anti-Slip	Yes
Cut to Length Range (mm)	Yes - Max. 150mm from Waste
Entry Configuration	Front Entry (Alcove), Corner Entry
Step-in Height (mm)	Level Access - 0, Low Level Step - 26
Thickness of Tray (mm)	26
Handing	Unhanded
Waste Compatibility	Gravity Waste, Pumped Waste