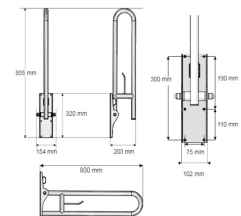
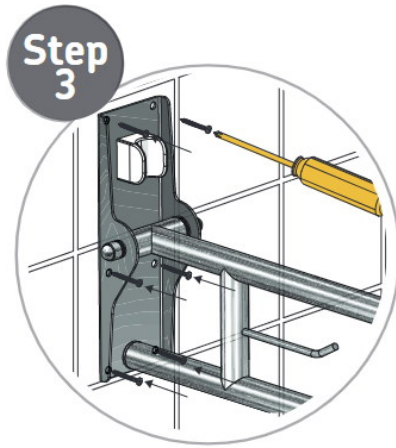




AKW 1800 Series - Hinged Fold-up DBL Hairpin Rail, TRH - Fixed Leg (32mm) White

Product Images





Description

The AKW 1800 Series 765mm long hinged fold-up double hairpin grab rail, toilet roll holder and fixed leg. Constructed from high quality materials the leg provides additional strength and stability.

Key benefits:

- Provides support for multi-user bathrooms
- Designed to fold neatly back to the wall - Ideal when space is limited
- Accommodates user-specific height requirements
- Epoxy resin coating and rust inhibitor treatment - Ensures durability
- Doc M compliant
- Toilet roll holder
- Fixed leg for additional support
- Matching AKW grabrails and accessories also available

Technical details:

- Overall length (mm): 765
- Rail diameter (mm): 32
- Overall projection from the wall (mm): 765
- Exposed fixings on wall plate
- Height of wall plate (mm): 816
- Tested to a maximum load of 30 stone / 200kg this refers to grabrail only

Warranty:

- 1 year manufacturer warranty

Please note:

- Fixings are not included and the installer should select the correct fixing based on wall type

Additional Information

Manufacturer	AKW / Contour
Length (mm)	765
WC Projection (mm)	540/550
Colour	White (RAL 9016)
Surface Finish	Polyester epoxy resin powder coated
Type	Hinged Arm Support with Leg & TRH
Material	Mild Steel
Mounting	Wall
Arm Control	Friction Hinge
Fixings	Exposed
Adjustable	Fixed Height (No Adjustment)