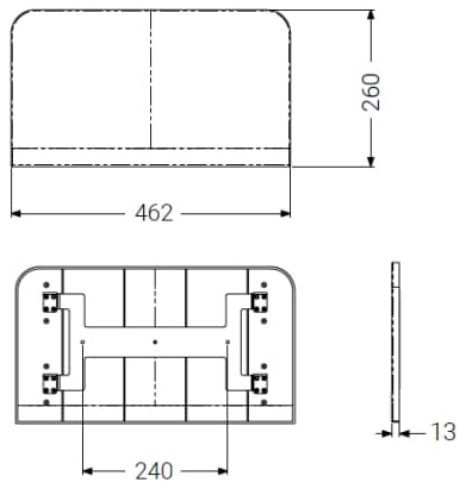




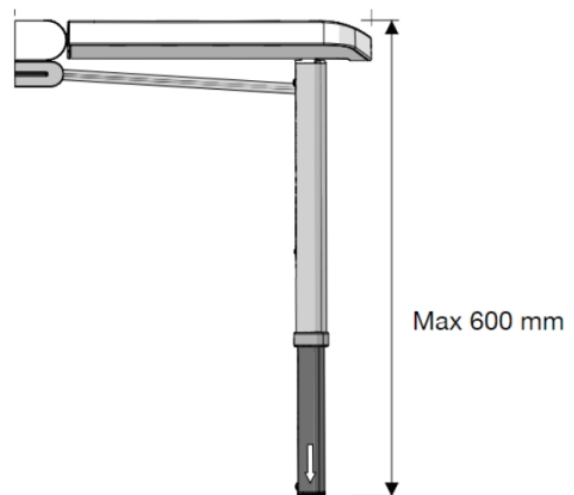
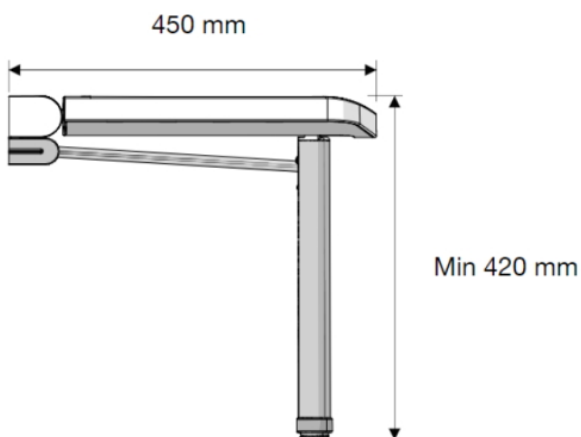
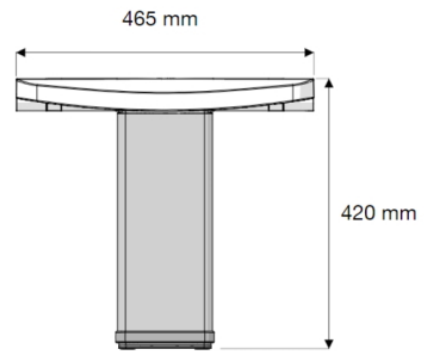
£784.07 Inc. VAT

Product Images





Onyx Seat Back and Arms – Back Rest



Description

AKW onyx series fold-up shower seat with back, arms and adjustable leg. White. Unique seat design to maximise user comfort, back rest prevents users from experiencing cold sensation of tiles or wall panels against their back. Able to be folded up, saving space and creating a multi-user environment, beneficial for small enclosures. Easily accessible for all users with a soft-close function. Drainage slot ensures seat dries properly after use.

Upon installation seat height is adjustable prior to installation between 421-600mm.

This AKW shower seat has a maximum load capacity of 200kg / 31 Stone, wall mounted and is designed for easy cleaning.

Key benefits:

- Comfortable backrest
- Fold-up armrests save space
- Designed to withstand everyday use
- Folds compactly against the wall when not in use
- Easy to clean and maintain
- Stylish design

Technical details:

- Maximum load capacity (kg / Stone): 200 / 31
- Projection when folded (mm): 83
- Projection of seat from wall (unfolded) (mm): 450
- Projection of arm rests from wall (unfolded) (mm): 380
- Width of seat (mm): 462
- Height (mm): 421 - 600
- Backrest materials: ABS
- Backrest wall mounted bracket materials: Stainless steel
- Armrest materials: Extruded aluminium, chrome ABS end caps
- Armrest wall mounted bracket materials: Die-cast aluminium
- Back rest fixing points: 3
- Arm rest fixing points (each): 6

Warranty:

- Lifetime manufacturer warranty

Note:

- Installation Instructions guarantee terms apply
- Fixings are not included

Additional Information

Manufacturer	AKW / Contour
Operation	Manual Folding
Configuration	Seat, Arms & Backrest
Seat Width (mm)	400 - 499
Height Adjustment (mm)	0 (Fixed)
Folding Seat	Yes
Padded	No