



Independent 4 Life

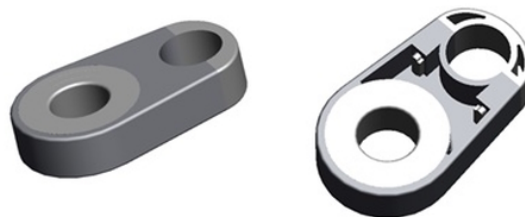
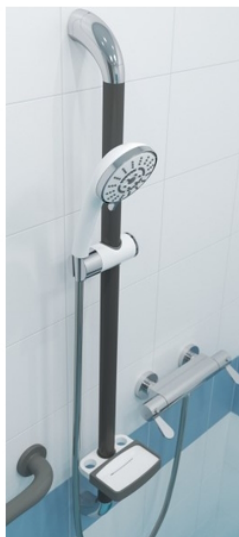
# AKW SmartCare Plus White 10.5kW with Silver/White Kit - OPT Accessories

£569.26 Inc. VAT

Product Code: 29010WH

## Product Images





## Additional Options

Optional coloured riser rail	Mid Grey	£45.34
	Dark Blue	£45.34
Optional hose retainer	CAT5	£5.22
Optional remote control	SmartCare Plus Remote	£63.61

## Description

The AKW SmartCare Plus 10.5kW is an expertly designed electric shower encompassing a multitude of features designed to aid with personal or assisted showering; features, such as the option to control the shower by the remote control, via an app (Android or iPhone) or the shower with the raised tactile “+” and “-” buttons for the flow rate and temperature.

The shower has also been designed to assist the installer with simple but thoughtful features such as 8 different electric and water entry points, dual power blocks for right or left-hand wiring and a footprint that covers most manufacturer models; this reduces the chances of having to re-tile if retrofitting.

For added reassurance when showering, the included 1000mm riser bar has a 150kg maximum load allowing it to double as a grab bar if needed.

### Key benefits:

- Electronic thermostatic Temperature and Flow Control
- Audible and tactical controls for temperature and flow to assisted users with visual impairments
- Audible indicators when the desired temperature and flow is reached

- Anti-glare matte finish panel
- Rounded surfaces for added safety if the user falls in the shower
- 100mm riser rail in a choice of White/Silver, Light Grey or Dark Blue
- The 1000mm riser rail has a maximum load of 150kg so can be used as a grab bar
- Includes a 3 mode shower head
- Optional CAT5 hose retaining ring (required for category five installations)
- Soap Dish

#### **Choice of control:**

- Raised tactile flow and temperature controls on the body of the shower
- Led lights display the temperature and the flow rate
- Remote control that has a range of up to ten meters
- iShower app for Android and iPhone

#### **Technical details:**

- Hose length (mm): 2000
- Riser rail (mm): 1000
- Riser colour: White/Silver
- Output (kW): 10.5
- Supply rating: 45/50 amp
- Terminal block connections: Max. 10mm<sup>2</sup>
- 8 cable entry points: top, bottom, rear and side and left or right
- Supply: Mains pressure cold water feed
- 8 water entry points: top, bottom, rear and side and left or right
- Inlet connections: 15mm compression
- Outlet connection: ½" BSP male
- Minimum maintained pressure: 0.5 bar
- Maximum pressure: 10.0 bar

#### **Approvals:**

- WRAS Approved
- BEAB Care Approved
- BEAB Approved
- RNIB Approved Gold awarded

#### **Manufacturer warranty:**

- 5 year manufacture warranty

## Additional Information

---

Manufacturer	AKW / Contour
Shower Type	Electric
Shower Features	Thermostatic Mixers, Shower Head, Shower Control, Fixed Riser Rail, Flexible Hose and Handset, Shower Head Holder
Fixings	Concealed
Control	Remote Control, Push Button, Smart Phone App (Android or iPhone)
Hose Length (mm) / Application	2000 / Shower Hose
Water Pressure	Normal Mains, High Pressure Systems
Technologies	Thermostatic Control, Temperature Adjustable, Mains Operated
Approvals	BEAB Care Mark, BEAB Approved, RNIB Mark, UKCA Mark, CE Mark, WRAS Approved