



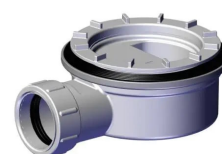
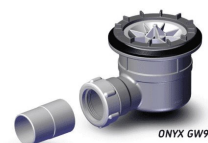
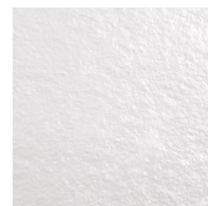
Independent 4 Life

# AKW - Onyx Linea Shower Tray, Range of Sizes & Wastes - White

£337.01 Inc. VAT

Product Code: ONYX-LIN

## Product Images





**ONYX PW90- 22mm**

**1** Position the tray over the desired location for the shower and outlet pipe. Mark around the edge of the shower tray and the waste area.

**2** For 'in' floor installation, cut into the flooring, taking care not to cut through any supporting material, plumbing or electrical wiring.

**3** Carefully remove the flooring to suit the finished height of the tray and final floor covering. For 'on' floor installation, remove the material around the waste area.

**4** For 'in' floor or 'on' floor installation remove the floor material for the waste area and a channel for the outlet pipe.

**5** Install the waste drain trap and waste outlet pipe. Water test the waste for flow and for any leaks. Ensure that the rubber seal is in place on top of the trap. Check the waste drain position with the tray.

**6** Remove any debris and ensure that there are no sharp edges or raised areas that will affect the tray height. Add 6:1 cement mix to the full tray area and correct height including all supporting edges.

**7** Lower the tray into position and check the height compared to the finished floor height. Firmly secure the tray into position and check all 4 sides are level again.

**8** Attach the waste trap to the tray with the waste clamping ring, see separate waste instructions. Apply a waterproof membrane to the whole of the showering area, see manufacturers instructions.

**9** Safety flooring or tiles should finish flush up to the edges of the tray and sealed with sealant. Protect the waste trap and cover from debris during installation.

**1** Position the tray over the desired location for the shower and outlet pipe. Mark around the edge of the shower tray.

**2** For 'in' floor installation, cut into the flooring, taking care not to cut through supporting joists or any plumbing or electrical wiring.

**3** Carefully remove the floor boards and locate the waste outlet pipe. For 'on' floor installation, remove the floor boards around the waste area.

**4** The waste area must be supported with additional noggins, 220mm around the waste. Additional noggins or joists must be used on all tray edges and between joists centres at a minimum of 355mm.

**5** Install the waste drain trap and waste outlet pipe. Do not cut into the joists, always drill through when connecting to the waste outlet pipe.

**6** Water test the waste drain trap for flow and any leaks. Ensure that the rubber seal is in place. Remove any debris and ensure that there are no sharp edges or raised areas and check levels.

**7** Apply grab adhesive to all the contact points between the tray, joists and noggins. Lower the tray over the waste position and firmly secure the tray into position and check all 4 sides are level again.

**8** Attach the waste trap to the tray with the waste clamping ring, see separate waste instructions. Apply a waterproof membrane to the whole of the showering area, see manufacturers instructions.

**9** Safety flooring or tiles should finish flush up to the edges of the tray and sealed with sealant. Protect the waste trap and cover from debris during installation.

**Onyx Linea White Tray Only 1000 x 700mm**  
Product code: 23980WH



Onyx Linea White Tray Only 1800 x 900mm  
Product code: 23995WH



## Product Options

---

Tray Size (mm)	Price Inc. VAT
1000x700	£337.01
1000x800	£343.76
1200x800	£370.73
1200x900	£370.73
1400x700	£390.94
1400x800	£397.69
1400x900	£411.17
1600x800	£451.60
1600x900	£458.34
1700x700	£458.34
1700x800	£465.10
1700x900	£471.83
1800x800	£485.30
1800x900	£492.04

## Additional Options

---

<b>AKW Code / Waste option</b>	25494 / GW90 Gravity Waste	£58.86
	25496-UK / DW90 Dry Waste & Pipe Adapter Kit	£70.14
	25495 / PW90 22mm Pumped Waste for Onyx	£17.49

## Description

---

White slate effect AKW Onyx Shower Tray is perfect for a modern level access or step in shower for corner or alcove installations. With a large range of sizes the trays are unhandled. To avoid joists and for easier installation the tray can be trimmed down to within 150mm of the waste.

Shower tray is 26mm thick for timber and screed floors and can be recessed for level access.

Choice of Onyx GW90 Gravity, DW90 low profile dry waste.

The trays slate effect offers a slip resistant surface to decrease the risks of accidents when using the shower.

The tray is compatible with AKW Standard, Larenco, Level Best, Silverdale and Standard screens.

### Key benefits:

- Contemporary design tray
- White slate finish to improve slip resistance
- Range of tray sizes, select as required below
- Shock and impact resistance
- Lightweight, product weight under 25kg
- Webbed back reinforcements
- Stainless steel water cover with slots
- High water flow rate (30 l/min)
- Can be recessed or surface mounted
- Weight limited 200kg / 31.5 stone

### Technical details:

- Low 26mm profile
- High water flow rate (30 l/min)
- Suitable for 'on floor' or 'in floor installations'
- Concealed center waste approx. 200mm from the center end of the tray
- The tray can be trimmed down to within 150mm of the waste
- Choice of gravity or dry
- Manufactured from SMC (Sheet Moulded Compound)
- Weight limited 200kg / 31.5 stone

### Waste options:

#### *AKW GW90 Gravity Waste*

- 50mm deep water trap to meet British Standards
- Prevents bad odour backflow

- 104mm below tray depth required
- Flow rate approx. 30 litre per minute
- Top access for easy cleaning, rodding and maintenance
- Meets performance requirements of British Standards, BS EN 274 Part 2:2002
- AKW Product Code: 25494

#### *AKW DW90 Dry Waste*

- Very Compact
- 54mm depth required to the underside of the shower tray
- A non-return valve prevents bad odour backflow
- Will not dry out with sporadic use
- Top access for easy cleaning and ensures easy maintenance
- AKW Product Code: 25496-UK
- Includes Pipe Adapter Kit (Product Code: 16-006-058)

#### *AKW PW90 22mm Pumped Waste*

- Overall depth of waste 66mm
- 44mm depth required to the underside of the shower tray
- Two baffles reduce the noise during showering cycle
- Top access for easy cleaning and ensures easy maintenance
- 22mm JG Speedfit Clip outlet
- Product Code: 25495

#### **Warranty:**

- Lifetime manufacturer warranty

#### **Manufacturer product codes:**

- 23980WH, 23982WH, 23983WH, 23984WH, 23985WH, 23987WH, 23989WH, 23988WH, 23990WH, 23991WH, 23992WH, 23994WH, 23993WH, 23995WH

#### **Note:**

- Lifetime warranty (please refer to AKW'S terms and conditions)
- To ensure the sustainability of the product and user safety, we recommend using a solution made of mild soap for cleaning. Do not use cleaning products made of: etones, hydrocarbons, acids, bases, esters and ethers. After use of a cleaning product rinse with water

## Additional Information

---

Manufacturer	AKW / Contour
Model	AKW - Onyx Linea
Tray Size (mm)	1000x700, 1000x800, 1200x800, 1200x900, 1400x700, 1400x800, 1400x900, 1600x800, 1600x900, 1700x700, 1700x800, 1700x900, 1800x800, 1800x900
Surface Colour	White
Anti-Slip	Yes
Cut to Length Range (mm)	Yes - Max. 150mm from Waste
Entry Configuration	Front Entry (Alcove), Corner Entry
Step-in Height (mm)	Level Access - 0, Low Level Step - 26
Thickness of Tray (mm)	26
Handing	Unhanded
Waste Compatibility	Gravity Waste