

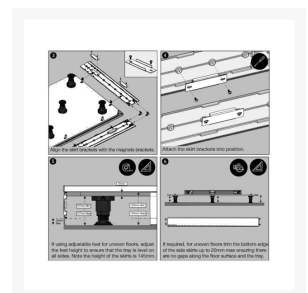
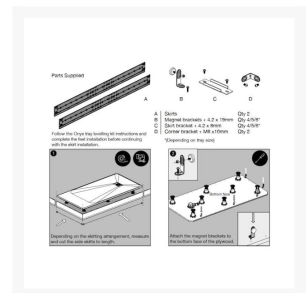


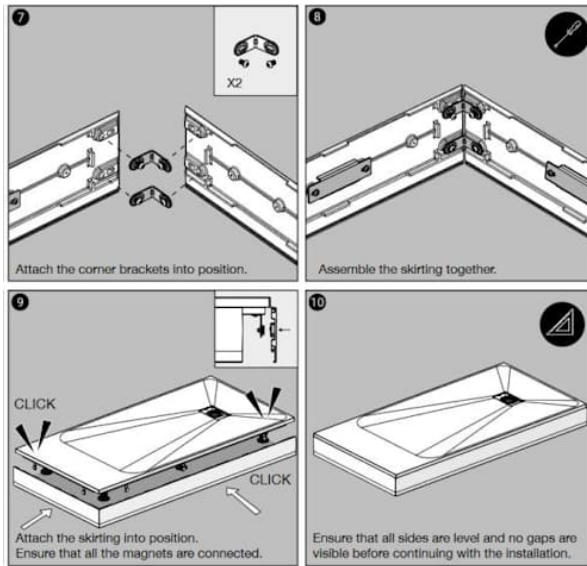
Independent 4 Life

AKW - Onyx Shower Tray Leg Kit, Range of Sizes - White, Grey & Black Colours

Product Code: ONYX-TLK

Product Images





Product Options

Product Code / Size / Colour



AKW 11895WH - Onyx Shower Tray Leg Kit, 800x800mm - White

White 800x800mm AKW Onyx shower tray leg kit, for corner or alcove installations and provides a solution for various bathroom types with unbreachable floors and uneven floors. The heavy-duty feet are height adjustable 100mm-126mm, with a height of 144 - 170mm for full installation. Magnetic trimmable SMC skirting board (144mm cuttable up to 26mm). The kit includes an AKW GW90 Onyx gravity waste.



AKW 11895GR - Onyx Shower Tray Leg Kit, 800x800mm - Grey

Grey 800x800mm AKW Onyx shower tray leg kit, for corner or alcove installations and provides a solution for various bathroom types with unbreachable floors and uneven floors. The heavy-duty feet are height adjustable 100-126mm, with a height of 144 - 170mm for full installation. Magnetic trimmable SMC skirting board (144mm cuttable up to 26mm). The kit includes an AKW GW90 Onyx gravity waste.



AKW 11895BK - Onyx Shower Tray Leg Kit, 800x800mm - Black

Black 800x800mm AKW Onyx shower tray leg kit, for corner or alcove installations and provides a solution for various bathroom types with unbreachable floors and uneven floors. The heavy-duty feet are height adjustable 100mm-126mm, with a height of 144 - 170mm for full installation. Magnetic trimmable SMC skirting board (144mm cuttable up to 26mm). The kit includes an AKW GW90 Onyx gravity waste.



AKW 11896WH - Onyx Shower Tray Leg Kit, 900x900mm - White

White 900x900mm AKW Onyx shower tray leg kit, for corner or alcove installations and provides a solution for various bathroom types with unbreachable floors and uneven floors. The heavy-duty feet are height adjustable by 100-126mm, overall height of 144 - 170mm for full installation. Magnetic trimmable SMC skirting board (144mm cuttable up to 26mm). The kit includes an AKW GW90 Onyx gravity waste.

AKW 11896GR - Onyx Shower Tray Leg Kit, 900x900mm - Grey



Grey 900x900mm AKW Onyx shower tray leg kit, for corner or alcove installations and provides a solution for various bathroom types with unbreachable floors and uneven floors. The heavy-duty feet are height adjustable 100-126mm, with a height of 144 - 170mm for full installation. Magnetic trimmable SMC skirting board (144mm cuttable up to 26mm). The kit includes an AKW GW90 Onyx gravity waste.

AKW 11896BK - Onyx Shower Tray Leg Kit, 900x900mm - Black



Black 900x900mm AKW Onyx shower tray leg kit, for corner or alcove installations and provides a solution for various bathroom types with unbreachable floors and uneven floors. The heavy-duty feet are height adjustable by 100-126mm, overall height of 144 - 170mm for full installation. Magnetic trimmable SMC skirting board (144mm cuttable up to 26mm). The kit includes an AKW GW90 Onyx gravity waste.

AKW 11897WH - Onyx Shower Tray Leg Kit, 1000x700mm - White



White 1000x700mm AKW Onyx shower tray leg kit, for corner or alcove installations and provides a solution for various bathroom types with unbreachable floors and uneven floors. The heavy-duty feet are height adjustable by 100-126mm, overall height of 144 - 170mm for full installation. Magnetic trimmable SMC skirting board (144mm cuttable up to 26mm). The kit includes an AKW GW90 Onyx gravity waste.

AKW 11898WH - Onyx Shower Tray Leg Kit, 1000x800mm - White



White 1000x800mm AKW Onyx shower tray leg kit, for corner or alcove installations and provides a solution for various bathroom types with unbreachable floors and uneven floors. The heavy-duty feet are height adjustable by 100-126mm, overall height of 144 - 170mm for full installation. Magnetic trimmable SMC skirting board (144mm cuttable up to 26mm). The kit includes an AKW GW90 Onyx gravity waste.

AKW 11898GR - Onyx Shower Tray Leg Kit, 1000x800mm - Grey



Grey 1000x800mm AKW Onyx shower tray leg kit, for corner or alcove installations and provides a solution for various bathroom types with unbreachable floors and uneven floors. The heavy-duty feet are height adjustable by 100-126mm, overall height of 144 - 170mm for full installation. Magnetic trimmable SMC skirting board (144mm cuttable up to 26mm). The kit includes an AKW GW90 Onyx gravity waste.

AKW 11898BK - Onyx Shower Tray Leg Kit, 1000x800mm - Black



Black 1000x800mm AKW Onyx shower tray leg kit, for corner or alcove installations and provides a solution for various bathroom types with unbreachable floors and uneven floors. The heavy-duty feet are height adjustable by 100-126mm, overall height of 144 - 170mm for full installation. Magnetic trimmable SMC skirting board (144mm cuttable up to 26mm). The kit includes an AKW GW90 Onyx gravity waste.

AKW 11899WH - Onyx Shower Tray Leg Kit, 1200x700mm - White



White 1200x700mm AKW Onyx shower tray leg kit, for corner or alcove installations and provides a solution for various bathroom types with unbreachable floors and uneven floors. The heavy-duty feet are height adjustable by 100-126mm, overall height of 144 - 170mm for full installation. Magnetic trimmable SMC skirting board (144mm cuttable up to 26mm). The kit includes an AKW GW90 Onyx gravity waste.

AKW 11990WH - Onyx Shower Tray Leg Kit, 1200x800mm - White



White 1200x800mm AKW Onyx shower tray leg kit, for corner or alcove installations and provides a solution for various bathroom types with unbreachable floors and uneven floors. The heavy-duty feet are height adjustable by 100-126mm, overall height of 144 - 170mm for full installation. Magnetic trimmable SMC skirting board (144mm cuttable up to 26mm). The kit includes an AKW GW90 Onyx gravity waste.

AKW 11990GR - Onyx Shower Tray Leg Kit, 1200x800mm - Grey



Grey 1200x800mm AKW Onyx shower tray leg kit, for corner or alcove installations and provides a solution for various bathroom types with unbreachable floors and uneven floors. The heavy-duty feet are height adjustable by 100-126mm, overall height of 144 - 170mm for full installation. Magnetic trimmable SMC skirting board (144mm cuttable up to 26mm). The kit includes an AKW GW90 Onyx gravity waste.

AKW 11990BK - Onyx Shower Tray Leg Kit, 1200x800mm - Black



Black 1200x800mm AKW Onyx shower tray leg kit, for corner or alcove installations and provides a solution for various bathroom types with unbreachable floors and uneven floors. The heavy-duty feet are height adjustable by 100-126mm, overall height of 144 - 170mm for full installation. Magnetic trimmable SMC skirting board (144mm cuttable up to 26mm). The kit includes an AKW GW90 Onyx gravity waste.

AKW 11991WH - Onyx Shower Tray Leg Kit, 1200x900mm - White



White 1200x900mm AKW Onyx shower tray leg kit, for corner or alcove installations and provides a solution for various bathroom types with unbreachable floors and uneven floors. The heavy-duty feet are height adjustable by 100-126mm, overall height of 144 - 170mm for full installation. Magnetic trimmable SMC skirting board (144mm cuttable up to 26mm). The kit includes an AKW GW90 Onyx gravity waste.

AKW 11991GR - Onyx Shower Tray Leg Kit, 1200x900mm - Grey



Grey 1200x900mm AKW Onyx shower tray leg kit, for corner or alcove installations and provides a solution for various bathroom types with unbreachable floors and uneven floors. The heavy-duty feet are height adjustable by 100-126mm, overall height of 144 - 170mm for full installation. Magnetic trimmable SMC skirting board (144mm cuttable up to 26mm). The kit includes an AKW GW90 Onyx gravity waste.

AKW 11991BK - Onyx Shower Tray Leg Kit, 1200x900mm - Black



Black 1200x900mm AKW Onyx shower tray leg kit, for corner or alcove installations and provides a solution for various bathroom types with unbreachable floors and uneven floors. The heavy-duty feet are height adjustable by 100-126mm, overall height of 144 - 170mm for full installation. Magnetic trimmable SMC skirting board (144mm cuttable up to 26mm). The kit includes an AKW GW90 Onyx gravity waste.

AKW 11986WH - Onyx Shower Tray Leg Kit, 1400x700mm - White



White 1400x700mm AKW Onyx shower tray leg kit, for corner or alcove installations and provides a solution for various bathroom types with unbreachable floors and uneven floors. The heavy-duty feet are height adjustable by 100-126mm, overall height of 144 - 170mm for full installation. Magnetic trimmable SMC skirting board (144mm cuttable up to 26mm). The kit includes an AKW GW90 Onyx gravity waste.

AKW 11992WH - Onyx Shower Tray Leg Kit, 1400x800mm - White



White 1400x800mm AKW Onyx shower tray leg kit, for corner or alcove installations and provides a solution for various bathroom types with unbreachable floors and uneven floors. The heavy-duty feet are height adjustable by 100-126mm, overall height of 144 - 170mm for full installation. Magnetic trimmable SMC skirting board (144mm cuttable up to 26mm). The kit includes an AKW GW90 Onyx gravity waste.

AKW 11992GR - Onyx Shower Tray Leg Kit, 1400x800mm - Grey



Grey 1400x800mm AKW Onyx shower tray leg kit, for corner or alcove installations and provides a solution for various bathroom types with unbreachable floors and uneven floors. The heavy-duty feet are height adjustable by 100-126mm, overall height of 144 - 170mm for full installation. Magnetic trimmable SMC skirting board (144mm cuttable up to 26mm). The kit includes an AKW GW90 Onyx gravity waste.

AKW 11992BK - Onyx Shower Tray Leg Kit, 1400x800mm - Black



Black 1400x800mm AKW Onyx shower tray leg kit, for corner or alcove installations and provides a solution for various bathroom types with unbreachable floors and uneven floors. The heavy-duty feet are height adjustable by 100-126mm, overall height of 144 - 170mm for full installation. Magnetic trimmable SMC skirting board (144mm cuttable up to 26mm). The kit includes an AKW GW90 Onyx gravity waste.

AKW 11993WH - Onyx Shower Tray Leg Kit, 1400x900mm - White



White 1400x900mm AKW Onyx shower tray leg kit, for corner or alcove installations and provides a solution for various bathroom types with unbreachable floors and uneven floors. The heavy-duty feet are height adjustable by 100-126mm, overall height of 144 - 170mm for full installation. Magnetic trimmable SMC skirting board (144mm cuttable up to 26mm). The kit includes an AKW GW90 Onyx gravity waste.

AKW 11993GR - Onyx Shower Tray Leg Kit, 1400x900mm - Grey



Grey 1400x900mm AKW Onyx shower tray leg kit, for corner or alcove installations and provides a solution for various bathroom types with unbreachable floors and uneven floors. The heavy-duty feet are height adjustable by 100-126mm, overall height of 144 - 170mm for full installation. Magnetic trimmable SMC skirting board (144mm cuttable up to 26mm). The kit includes an AKW GW90 Onyx gravity waste.

AKW 11993BK - Onyx Shower Tray Leg Kit, 1400x900mm - Black



Black 1400x900mm AKW Onyx shower tray leg kit, for corner or alcove installations and provides a solution for various bathroom types with unbreachable floors and uneven floors. The heavy-duty feet are height adjustable by 100-126mm, overall height of 144 - 170mm for full installation. Magnetic trimmable SMC skirting board (144mm cuttable up to 26mm). The kit includes an AKW GW90 Onyx gravity waste.

AKW 11994WH - Onyx Shower Tray Leg Kit, 1600x800mm - White



White 1600x800mm AKW Onyx shower tray leg kit, for corner or alcove installations and provides a solution for various bathroom types with unbreachable floors and uneven floors. The heavy-duty feet are height adjustable by 100-126mm, overall height of 144 - 170mm for full installation. Magnetic trimmable SMC skirting board (144mm cuttable up to 26mm). The kit includes an AKW GW90 Onyx gravity waste.

AKW 11994GR - Onyx Shower Tray Leg Kit, 1600x800mm - Grey



Grey 1600x800mm AKW Onyx shower tray leg kit, for corner or alcove installations and provides a solution for various bathroom types with unbreachable floors and uneven floors. The heavy-duty feet are height adjustable by 100-126mm, overall height of 144 - 170mm for full installation. Magnetic trimmable SMC skirting board (144mm cuttable up to 26mm). The kit includes an AKW GW90 Onyx gravity waste.

AKW 11994BK - Onyx Shower Tray Leg Kit, 1600x800mm - Black



Black 1600x800mm AKW Onyx shower tray leg kit, for corner or alcove installations and provides a solution for various bathroom types with unbreachable floors and uneven floors. The heavy-duty feet are height adjustable by 100-126mm, overall height of 144 - 170mm for full installation. Magnetic trimmable SMC skirting board (144mm cuttable up to 26mm). The kit includes an AKW GW90 Onyx gravity waste.

AKW 11995WH - Onyx Shower Tray Leg Kit, 1600x900mm - White



White 1600x900mm AKW Onyx shower tray leg kit, for corner or alcove installations and provides a solution for various bathroom types with unbreachable floors and uneven floors. The heavy-duty feet are height adjustable by 100-126mm, overall height of 144 - 170mm for full installation. Magnetic trimmable SMC skirting board (144mm cuttable up to 26mm). The kit includes an AKW GW90 Onyx gravity waste.

AKW 11995GR - Onyx Shower Tray Leg Kit, 1600x900mm - Grey



Grey 1600x900mm AKW Onyx shower tray leg kit, for corner or alcove installations and provides a solution for various bathroom types with unbreachable floors and uneven floors. The heavy-duty feet are height adjustable by 100-126mm, overall height of 144 - 170mm for full installation. Magnetic trimmable SMC skirting board (144mm cuttable up to 26mm). The kit includes an AKW GW90 Onyx gravity waste.

AKW 11995BK - Onyx Shower Tray Leg Kit, 1600x900mm - Black



Black 1600x900mm AKW Onyx shower tray leg kit, for corner or alcove installations and provides a solution for various bathroom types with unbreachable floors and uneven floors. The heavy-duty feet are height adjustable by 100-126mm, overall height of 144 - 170mm for full installation. Magnetic trimmable SMC skirting board (144mm cuttable up to 26mm). The kit includes an AKW GW90 Onyx gravity waste.

AKW 11996WH - Onyx Shower Tray Leg Kit, 1700x800mm - White



White 1700x800mm AKW Onyx shower tray leg kit, for corner or alcove installations and provides a solution for various bathroom types with unbreachable floors and uneven floors. The heavy-duty feet are height adjustable by 100-126mm, overall height of 144 - 170mm for full installation. Magnetic trimmable SMC skirting board (144mm cuttable up to 26mm). The kit includes an AKW GW90 Onyx gravity waste.

AKW 11996GR - Onyx Shower Tray Leg Kit, 1700x800mm - Grey



Grey 1700x800mm AKW Onyx shower tray leg kit, for corner or alcove installations and provides a solution for various bathroom types with unbreachable floors and uneven floors. The heavy-duty feet are height adjustable by 100-126mm, overall height of 144 - 170mm for full installation. Magnetic trimmable SMC skirting board (144mm cuttable up to 26mm). The kit includes an AKW GW90 Onyx gravity waste.

AKW 11996BK - Onyx Shower Tray Leg Kit, 1700x800mm - Black



Black 1700x800mm AKW Onyx shower tray leg kit, for corner or alcove installations and provides a solution for various bathroom types with unbreachable floors and uneven floors. The heavy-duty feet are height adjustable by 100-126mm, overall height of 144 - 170mm for full installation. Magnetic trimmable SMC skirting board (144mm cuttable up to 26mm). The kit includes an AKW GW90 Onyx gravity waste.

AKW 11997WH - Onyx Shower Tray Leg Kit, 1700x900mm - White



White 1700x900mm AKW Onyx shower tray leg kit, for corner or alcove installations and provides a solution for various bathroom types with unbreachable floors and uneven floors. The heavy-duty feet are height adjustable by 100-126mm, overall height of 144 - 170mm for full installation. Magnetic trimmable SMC skirting board (144mm cuttable up to 26mm). The kit includes an AKW GW90 Onyx gravity waste.

AKW 11997GR - Onyx Shower Tray Leg Kit, 1700x900mm - Grey



Grey 1700x900mm AKW Onyx shower tray leg kit, for corner or alcove installations and provides a solution for various bathroom types with unbreachable floors and uneven floors. The heavy-duty feet are height adjustable by 100-126mm, overall height of 144 - 170mm for full installation. Magnetic trimmable SMC skirting board (144mm cuttable up to 26mm). The kit includes an AKW GW90 Onyx gravity waste.

AKW 11997BK - Onyx Shower Tray Leg Kit, 1700x900mm - Black



Black 1700x900mm AKW Onyx shower tray leg kit, for corner or alcove installations and provides a solution for various bathroom types with unbreachable floors and uneven floors. The heavy-duty feet are height adjustable by 100-126mm, overall height of 144 - 170mm for full installation. Magnetic trimmable SMC skirting board (144mm cuttable up to 26mm). The kit includes an AKW GW90 Onyx gravity waste.

AKW 11998WH - Onyx Shower Tray Leg Kit, 1800x800mm - White



White 1800x800mm AKW Onyx shower tray leg kit, for corner or alcove installations and provides a solution for various bathroom types with unbreachable floors and uneven floors. The heavy-duty feet are height adjustable by 100-126mm, overall height of 144 - 170mm for full installation. Magnetic trimmable SMC skirting board (144mm cuttable up to 26mm). The kit includes an AKW GW90 Onyx gravity waste.

AKW 11998GR - Onyx Shower Tray Leg Kit, 1800x800mm - Grey



Grey 1800x800mm AKW Onyx shower tray leg kit, for corner or alcove installations and provides a solution for various bathroom types with unbreachable floors and uneven floors. The heavy-duty feet are height adjustable by 100-126mm, overall height of 144 - 170mm for full installation. Magnetic trimmable SMC skirting board (144mm cuttable up to 26mm). The kit includes an AKW GW90 Onyx gravity waste.

AKW 11998BK - Onyx Shower Tray Leg Kit, 1800x800mm - Black



Black 1800x800mm AKW Onyx shower tray leg kit, for corner or alcove installations and provides a solution for various bathroom types with unbreachable floors and uneven floors. The heavy-duty feet are height adjustable by 100-126mm, overall height of 144 - 170mm for full installation. Magnetic trimmable SMC skirting board (144mm cuttable up to 26mm). The kit includes an AKW GW90 Onyx gravity waste.

AKW 11999WH - Onyx Shower Tray Leg Kit, 1800x900mm - White



White 1800x900mm AKW Onyx shower tray leg kit, for corner or alcove installations and provides a solution for various bathroom types with unbreachable floors and uneven floors. The heavy-duty feet are height adjustable by 100-126mm, overall height of 144 - 170mm for full installation. Magnetic trimmable SMC skirting board (144mm cuttable up to 26mm). The kit includes an AKW GW90 Onyx gravity waste.



AKW 11999GR - Onyx Shower Tray Leg Kit, 1800x900mm - Grey

Grey 1800x900mm AKW Onyx shower tray leg kit, for corner or alcove installations and provides a solution for various bathroom types with unbreachable floors and uneven floors. The heavy-duty feet are height adjustable by 100-126mm, overall height of 144 - 170mm for full installation. Magnetic trimmable SMC skirting board (144mm cuttable up to 26mm). The kit includes an AKW GW90 Onyx gravity waste.



AKW 11999BK - Onyx Shower Tray Leg Kit, 1800x900mm - Black

Black 1800x900mm AKW Onyx shower tray leg kit, for corner or alcove installations and provides a solution for various bathroom types with unbreachable floors and uneven floors. The heavy-duty feet are height adjustable by 100-126mm, overall height of 144 - 170mm for full installation. Magnetic trimmable SMC skirting board (144mm cuttable up to 26mm). The kit includes an AKW GW90 Onyx gravity waste.

Description

The AKW Onyx shower tray leg kit is suitable for Corner or Alcove installations and provides a solution for various bathroom types.

The heavy-duty feet are height adjustable 100mm-126mm. Designed to allow pipes underneath the tray when the bathroom configuration does not allow the tray to be embedded in the floor.

Ideal for unbreachable floors and uneven floors, the finished step in height is between 144 - 170mm. The kit includes an AKW GW90 Onyx gravity waste.

A magnetic trimmable skirting board (144mm cuttable up to 26mm). Provides easy access to the waste due to the removable skirting board.

Cost saving solution; all the necessary components in one kit per each size of shower tray. The installer doesn't need to buy a full sheet of plywood and cut it down or he doesn't need to buy and construct a wooden frame.

Available in a large range of sizes from 800x800mm to 1800x900mm in White, Grey or Black finishes to match the AKW Onyx slate effect shower trays. Note not all tray leg kit sizes are available in Grey and Black, if you are unsure please contact us.

Key benefits:

- Quick and easy to install
- Minimum amount of disruption
- Suitable for Corner or Alcove installations

- Tray kits available in white, black or grey
- Designed to be installed on top of floors
- Safe for installation on asbestos floors

Technical details:

- Full height of the installation: 144 - 170mm
- The skirts' width is 144mm and can be trimmed by 28mm
- Adjustable feet
- Aluminium profiles
- SMC skirting board
- SMC skirt with magnet (1 or 2 depending on size of tray)
- 18mm WBP plywood sheet
- GW90 Onyx gravity waste

Warranty:

- Lifetime manufacturer warranty

Manufacturer product codes:

- White: 11895WH, 11896WH, 11897WH, 11898WH, 11899WH, 11990WH, 11991WH, 11986WH, 11992WH, 11993WH, 11994WH, 11995WH, 11996WH, 11997WH, 11998WH, 11999WH
- Grey: 11895GR, 11896GR, 11898GR, 11990GR, 11991GR, 11992GR, 11993GR, 11994GR, 11995GR, 11996GR, 11997GR, 11998GR, 11999GR
- Black: 11896BK, 11898BK, 11990BK, 11991BK, 11992BK, 11993BK, 11994BK, 11995BK, 11996BK, 11997BK, 11998BK, 11999BK

Additional Information

Manufacturer	AKW / Contour
Model	AKW - Onyx
Tray Size (mm)	800x800, 900x900, 1000x700, 1000x800, 1200x700, 1200x800, 1200x900, 1400x700, 1400x800, 1400x900, 1600x800, 1600x900, 1700x800, 1700x900, 1800x800, 1800x900
Surface Colour	White, Grey, Black
Anti-Slip	No
Entry Configuration	Front Entry (Alcove), Corner Entry
Handing	Unhanded
Waste Compatibility	Gravity Waste