



Independent 4 Life

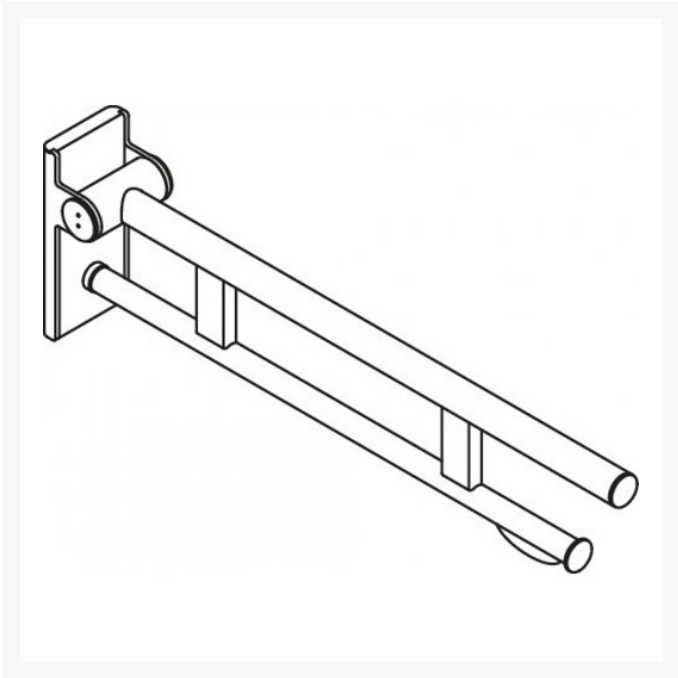
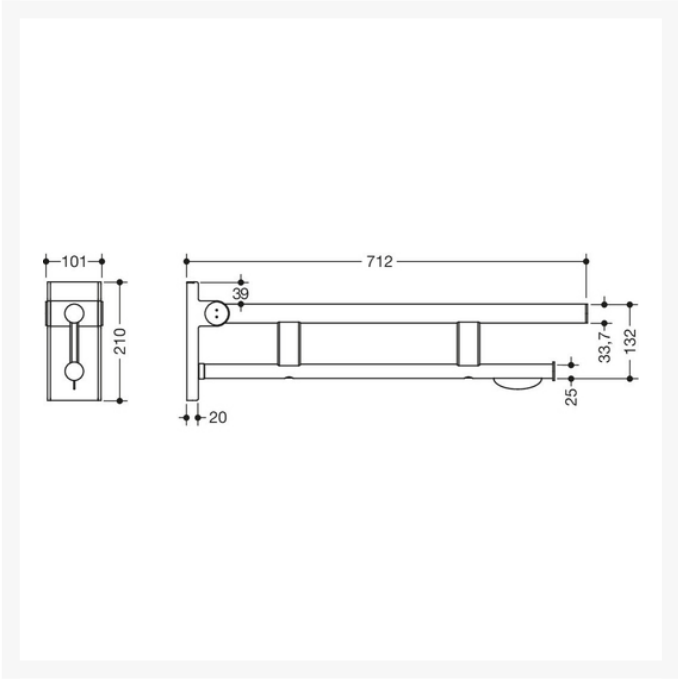
HEWI System 900 - 700mm Mobile Hinged Support Rail Duo, w/ TRH, OPT Leg & Cover Plates - Choice of Finish

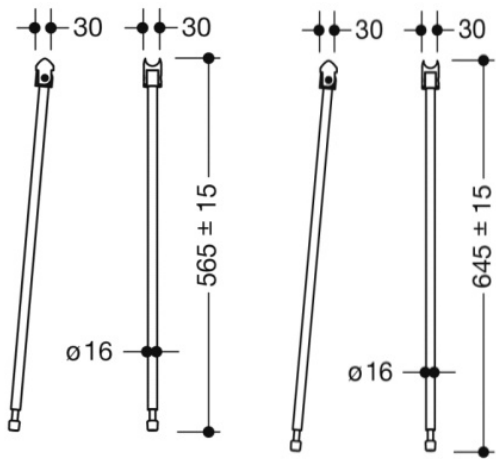
From:	£493.80
To:	£1,320.24
Inc. VAT	

Product Code: 900.50.406

Product Images

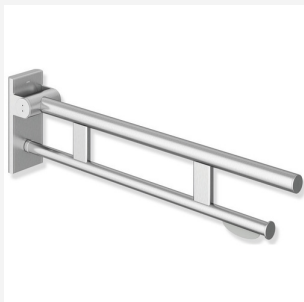






Product Options

Product Code / Finish / Length (mm)



900.50.406XA - 700mm Mobile Hinged Support Rail Duo, TRH - Satin Finish

£411.50

HEWI removable hinged support rail Duo Mobile, stylish Satin finish, two parallel round gripping levels made of high quality stainless steel. Maintenance free, permanently smooth and easy moving joint. With a 700mm projection, wall plate 210mm high and 101mm wide, loading capacity of 100kg. Toilet roll holder included.



900.50.40640 - 700mm Mobile Hinged Support Rail Duo, TRH - Chrome Plated

£582.30

HEWI removable hinged support rail Duo Mobile, stylish chrome plated finish, two parallel round gripping levels made of high quality stainless steel. Maintenance free, permanently smooth and easy moving joint. With a 700mm projection, wall plate 210mm high and 101mm wide, loading capacity of 100kg. Toilet roll holder included.



900.50.40660DC - 700mm Mobile Hinged Support Rail Duo, TRH - Matt Black

£560.20

HEWI removable hinged support rail Duo Mobile, stylish matt black finish, two parallel round gripping levels made of high quality stainless steel. Maintenance free, permanently smooth and easy moving joint. With a 700mm projection, wall plate 210mm high and 101mm wide, loading capacity of 100kg. Toilet roll holder included.



900.50.40660DX - 700mm Mobile Hinged Support Rail Duo, TRH - Powder Coated Matt White

£560.20

HEWI removable hinged support rail Duo Mobile, stylish matt white finish, two parallel round gripping levels made of high quality stainless steel. Maintenance free, permanently smooth and easy moving joint. With a 700mm projection, wall plate 210mm high and 101mm wide, loading capacity of 100kg. Toilet roll holder included.

Optional Support Leg 565mm



900.50.021XA - 565mm Length - Satin Finished

£97.90

HEWI Floor Support, for retrofitting on hinged support rails, creating a steady anchor for all ages and abilities to be able to use. In a stylish satin finish. Made of high quality stainless steel. With a vertical length of 565mm and a mounting height of 680mm.



900.50.02140 - 565mm Length - Chrome Plated

£150.00

HEWI Floor Support, for retrofitting on hinged support rails, creating a steady anchor for all ages and abilities to be able to use. In a stylish chrome plated finish. Made of high quality stainless steel. With a vertical length of 565mm and a mounting height of 680mm.



900.50.02160SC - 565mm Length - Matt Dark Grey Pearl Mica

£143.30

HEWI Floor Support, for retrofitting on hinged support rails, creating a steady anchor for all ages and abilities to be able to use. In a stylish powder coated matt dark grey pearl mica. Made of high quality stainless steel. With a vertical length of 565mm and a mounting height of 680mm.



900.50.02160DC - 565mm Length - Matt Black

£143.30

HEWI Floor Support, for retrofitting on hinged support rails, creating a steady anchor for all ages and abilities to be able to use. In a stylish powder coated matt black finish. Made of high quality stainless steel. With a vertical length of 565mm and a mounting height of 680mm.








900.50.02160DX - 565mm Length - Matt White

£143.30

HEWI Floor Support, for retrofitting on hinged support rails, creating a steady anchor for all ages and abilities to be able to use. In a stylish powder coated matt white finish. Made of high quality stainless steel. With a vertical length of 565mm and a mounting height of 680mm.

Optional Support Leg 645mm

	<p>900.50.020XA - 645mm Length - Satin Finished</p> <p>HEWI Floor Support, for retrofitting on hinged support rails, creating a steady anchor for all ages and abilities to be able to use. In a stylish satin finish. Made of high quality stainless steel. With a vertical length of 645mm and a mounting height of 760mm.</p>	£97.90
	<p>900.50.02040 - 645mm Length - Chrome Plated</p> <p>HEWI Floor Support, for retrofitting on hinged support rails, in a stylish chrome plated finish. Made of high quality stainless steel. With a vertical length of 645mm and a mounting height of 760mm.</p>	£150.00
	<p>900.50.02060SC - 645mm Length - Matt Dark Grey Pearl Mica</p> <p>HEWI Floor Support, for retrofitting on hinged support rails, creating a steady anchor for all ages and abilities to be able to use. In a stylish matt dark grey pearl mica finish. Made of high quality stainless steel. With a vertical length of 645mm and a mounting height of 760mm.</p>	£143.30
	<p>900.50.02060DC - 645mm Length - Matt Black</p> <p>HEWI Floor Support, for retrofitting on hinged support rails, creating a steady anchor for all ages and abilities to be able to use. In a stylish matt black finish. Made of high quality stainless steel. With a vertical length of 645mm and a mounting height of 760mm.</p>	£143.30
	<p>900.50.02060DX - 645mm Length - Matt White</p> <p>HEWI Floor Support, for retrofitting on hinged support rails, creating a steady anchor for all ages and abilities to be able to use. In a stylish powder coated matt white finish. Made of high quality stainless steel. With a vertical length of 645mm and a mounting height of 760mm.</p>	£143.30

Optional Additional Mounting Plate with Cover



900.50.003XA92 - Mounting Plate with Cover - Satin Finished/Anthracite Grey

£107.00

HEWI mounting plate with cover, the cover is designed to disguise fixings when the HEWI mobile handrails are temporarily removed. Both mounting plate and face plate are made of high-quality stainless steel. Satin Finished cover plate with a Anthracite Grey frame, 80mm wide, 226mm high and 20mm deep.



900.50.003XA98 - Mounting Plate with Cover - Satin Finished/Signal White

£107.00

HEWI mounting plate with cover, the cover is designed to disguise fixings when the HEWI mobile handrails are temporarily removed. Both mounting plate and face plate are made of high-quality stainless steel. Satin Finished cover plate with a Signal White frame, 80mm wide, 226mm high and 20mm deep.



900.50.0034092 - Mounting Plate with Cover - Chrome Plated/Anthracite Grey

£129.90

HEWI mounting plate with cover, the cover is designed to disguise fixings when the HEWI mobile handrails are temporarily removed. Both mounting plate and face plate are made of high-quality stainless steel. Chrome Plated cover plate with a Anthracite Grey frame, 80mm wide, 226mm high and 20mm deep.



900.50.0034098 - Mounting Plate with Cover - Chrome Plated/Signal White

£129.90

HEWI mounting plate with cover, the cover is designed to disguise fixings when the HEWI mobile handrails are temporarily removed. Both mounting plate and face plate are made of high-quality stainless steel. Chrome Plated cover plate with a Signal White frame, 80mm wide, 226mm high and 20mm deep.



900.50.00360AS - Wall Cover for Mounting Plate - Matt White

£131.60

HEWI mounting plate with cover, the cover is designed to disguise fixings when the HEWI mobile handrails are temporarily removed. Both mounting plate and face plate are made of high-quality stainless steel. Matt White finish on the cover plate and mounting plate, 80mm wide, 226mm high and 20mm deep.



900.50.00360CV - Mounting Plate with Cover - Matt Black

£131.60

HEWI mounting plate with cover, the cover is designed to disguise fixings when the HEWI mobile handrails are temporarily removed. Both mounting plate and face plate are made of high-quality stainless steel. Matt Black finish on the cover plate and mounting plate, 80mm wide, 226mm high and 20mm deep.

Optional Cover Plate



900.50.002XA98 - Wall Cover for Mounting Plate - Satin Finished/Signal White

£73.10

The HEWI cover is designed to disguise fixings when the HEWI mobile handrails are temporarily removed. With a stylish Satin finish to match the removed handrail and a Signal White frame. The face plate is made of high-quality stainless steel. 80mm wide, 226mm high and 20mm deep.



900.50.002XA92 - Wall Cover for Mounting Plate - Satin Finished/Anthracite Grey

£73.10

The HEWI cover is designed to disguise fixings when the HEWI mobile handrails are temporarily removed. With a stylish Satin finish to match the removed handrail and a Anthracite Grey frame. The face plate is made of high-quality stainless steel. 80mm wide, 226mm high and 20mm deep.



900.50.0024092 - Wall Cover for Mounting Plate - Chrome Plated/Anthracite Grey

£81.20

The HEWI cover is designed to disguise fixings when the HEWI mobile handrails are temporarily removed. With a stylish Chrome Plated finish to match the removed handrail and a Anthracite Grey frame. The face plate is made of high-quality stainless steel. 80mm wide, 226mm high and 20mm deep.



900.50.0024098 - Wall Cover for Mounting Plate - Chrome Plated/Signal White

£81.20

The HEWI cover is designed to disguise fixings when the HEWI mobile handrails are temporarily removed. With a stylish Chrome Plated finish to match the removed handrail and a Signal White frame. The face plate is made of high-quality stainless steel. 80mm wide, 226mm high and 20mm deep.



900.50.00260AS - Wall Cover for Mounting Plate - Matt White

£86.30

The HEWI cover is designed to disguise fixings when the HEWI mobile handrails are temporarily removed. With a stylish Matt White finish to match the removed handrail. The face plate is made of high-quality stainless steel. 80mm wide, 226mm high and 20mm deep.



900.50.00260CV - Wall Cover for Mounting Plate - Matt Black

£86.30

The HEWI cover is designed to disguise fixings when the HEWI mobile handrails are temporarily removed. With a stylish Matt Black finish to match the removed handrail. The face plate is made of high-quality stainless steel. 80mm wide, 226mm high and 20mm deep.

Description

The HEWI Duo Mobile support rail with a toilet roll holder. Folding support arm with a friction hinge, and 700mm projection. Fixings are concealed, creating a modern appearance. Permanently smooth and easy moving joint. With a choice of five stylish finishes.

The HEWI System 900 mobile support rail can be dismounted from the wall. Specifically beneficial for fitting into hotels, Airbnb's, B&B's, and domestic properties creating flexible usage when the rail is not in use or is not required.

Once the rail has been removed the wall mounting plate can be concealed with an optional colour matching cover plate. The mounting plates and covers are also available separately.

Optional colour matching HEWI floor supports legs, are also available in two lengths 565 and 645mm, for retrofitting onto the rails to increase stability when the support rail is in use.

Using the System 900 you can create a stylish and flexible handrail installation.

Key benefits:

- Suitable for both wet and dry environments
- Friction hinge for assisted use
- Folding rail
- Toilet roll holder
- Easy installation
- Pore-free surfaces
- Doc M compliant
- **Choice of five finishes / Product Code:**
- - Matt Black / 900.50.40660DC
- - Powder Coated Matt White / 900.50.40660DX

- - Satin Finished / 900.50.406XA
- - Chrome Plated / 900.50.40640
- - Matt Dark Grey Pearl Mica / 900.50.40660SC

Technical details:

- Top rail 33.7mm diameter
- Load tested to 100kg (220lb)
- Bottom rail 25mm diameter
- 700mm length
- 210mm high and 101mm wide
- Secured by fixing screw to prevent unintentional removal

Optional Floor Support:

- Two length options: 565mm or 645mm
- Choice of five matching finishes to support rails
- Diameter of 16mm
- Height adjustment within +/- 15mm range

Warranty:

- 1 year manufacturer warranty

Please note:

- The fixing screws/bolts/wall plugs that are not included - the installer should select the correct HEWI System 900 - fixing based on wall type
- Please refer to the installation instructions for more information

Additional Information

Manufacturer	HEWI
Length (mm)	700
Surface Finish	Powder Coated, Smooth, Matt White, Matt Black, Chrome Plated
Type	Hinged Arm Support
Material	Stainless Steel
Mounting	Wall
Arm Control	Friction Hinge
Fixings	Concealed
Adjustable	Removable