



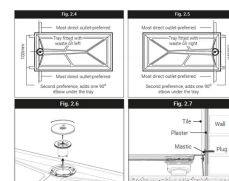
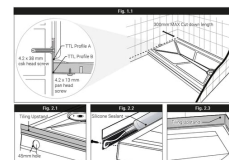
Independent 4 Life

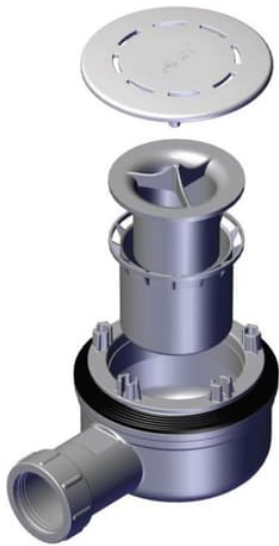
# AKW Sulby 3 Step-in Shower Tray, 150mm High, w/ GW90 Gravity Waste - Choice of Size

£536.26 Inc. VAT

Product Code: SULBY3

## Product Images





Sulby 3 Tray 1200 x 700mm  
AKW 25434 GW90 Metal Topped Gravity Waste  
Product Code: 17300W



## Product Options

Tray Size (mm)	Price Inc. VAT
1200x700	£543.76
1200x750	£543.76
1200x800	£543.76
1400x700	£536.26
1400x750	£536.26
1400x800	£536.26
1800x700	£587.20
1800x750	£587.20
1800x800	£587.20

## Description

The AKW Sulby 3 is a step-in shower tray designed for unbreachable floors for alcove and corner installations on timber and concrete floors.

The tray doesn't require under tray foaming and is easy to install.

The trays are 150mm high with a 35mm fall inside the tray, supplied with a gravity waste by AKW the GW90 Metal Topped with a 90mm diameter. The pipework can be exited from 4x possible side outlet points on the side of the tray.

**Key benefits:**

- No need to excavate the floor
- For unbreachable floors
- Constructed of hand laid fibre glass (GRP)
- Slip resistant, providing a safer showering experience for the user
- Non handed, for both left or right handed installations providing greater flexibility
- Pipework is concealed within the height of the tray providing easier installation and improving the bathroom aesthetic
- Tiling upstands supplied for corner or alcove installations
- 4x different pre-jigged waste exit points underneath the tray
- Up to 30 stone point loaded / 190.5kg weight bearing
- AKW 45mm Step for Standalone and Sulby product code 25007, provides easier access for surface installation or semi-recessed

**Waste:**

*AKW Product Code: 25434 - GW90 Metal Topped 90mm Dia. Waste*

- - Flow rate: approx. 27 litres per minute
- - Low depth 90mm diameter trapped gravity waste
- - Installation depth required below tray (mm): 60

**Technical details:**

- Max. point load (kg / Stone): 190.5 / 30
- 1800mm trays can be shortened up to 300mm can be trimmed off the end opposite the waste. Cut trays are only suitable for alcove installations
- Unhanded
- Can be installed on timber and concrete floors
- Wastewater pipework can be taken out beneath the tray in 4x side outlet positions
- Manufactured by AKW

**Warranty:**

- Lifetime manufacturer guarantee

**Manufacturer product codes:**

- Tray with Gravity Waste code: 17300W, 17301W, 17302W, 17303W, 17304W, 17305W, 17306W, 17307W, 17308W

# Additional Information

Manufacturer	AKW / Contour
Model	AKW - Sulby 3
Tray Size (mm)	1200x700, 1200x750, 1200x800, 1400x700, 1400x750, 1400x800, 1800x700, 1800x750, 1800x800
Handing	Unhanded
Entry Configuration	Front Entry (Alcove), Corner Entry
Step-in Height (mm)	Step-In - 150
Thickness of Tray (mm)	90
Waste Compatibility	Gravity Waste
Tray Edge for Floor Finish	Not Applicable
Ramp or Step Available	Step