



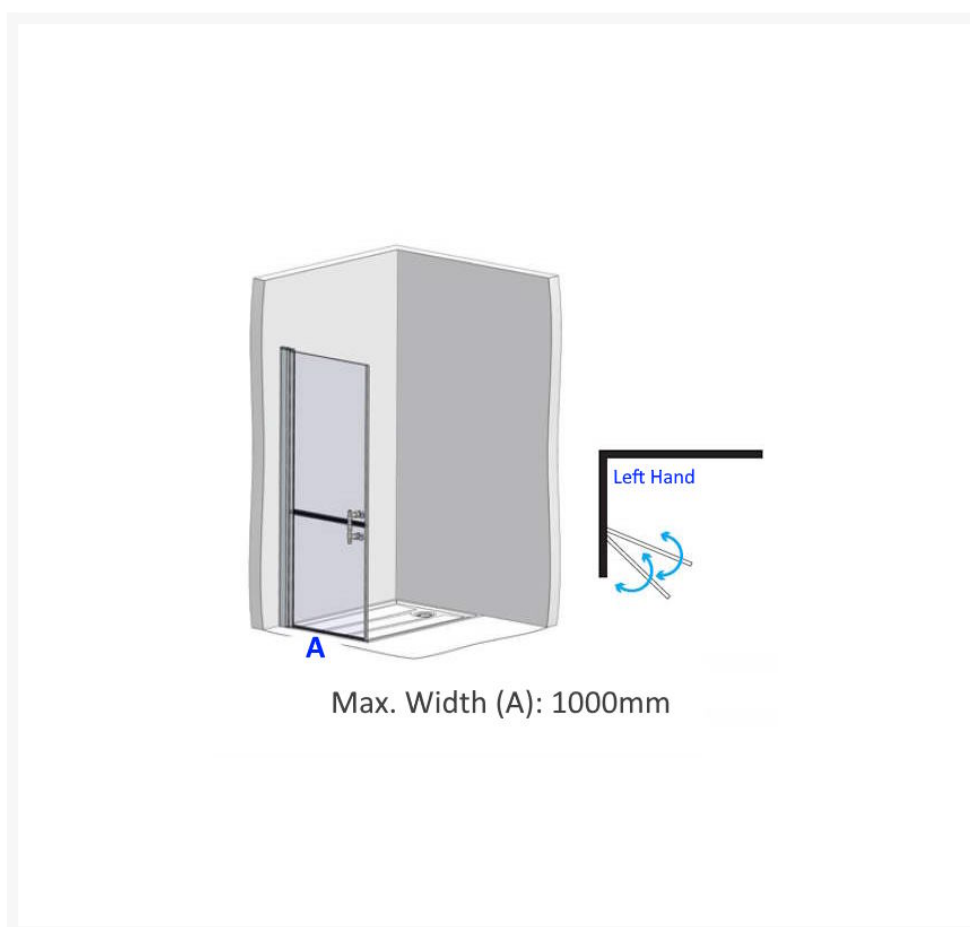
Independent 4 Life

# EASA Elegance LH Split Level Door - Custom Size (A) Min. 600, Max. 1000mm

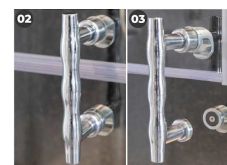
£933.60 Inc. VAT

Product Code: L2L

## Product Images

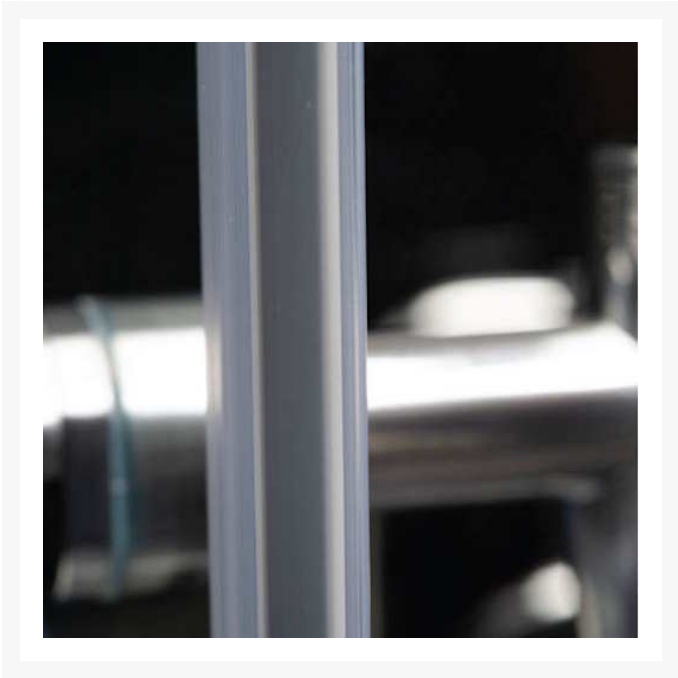
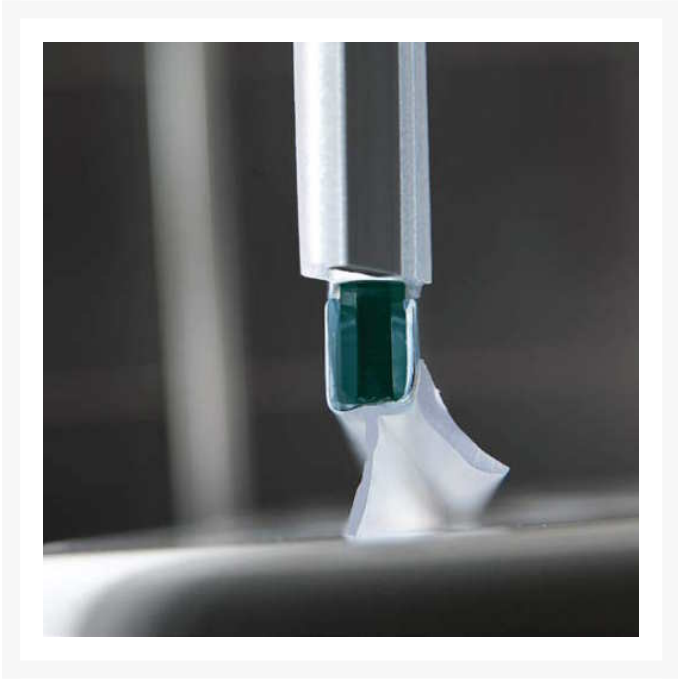


Max. Width (A): 1000mm



02) SPLIT LEVEL DOORS LOCKING DOOR HANDLE - CLOSED: Unique anti magnetic locking handles ensure ease of operation.  
03) SPLIT LEVEL DOORS LOCKING DOOR HANDLE - OPEN: Shown in open position.





## Additional Options

---

<b>Overall width of (A) left-hand split-level door (min. 600mm, max. 1000mm)</b>		£0.00
<b>Wall profile compensator</b>	Square - Shower Trays/Floor Tiles	£0.00
	Curved - Vinyl Safety Flooring	£0.00
<b>Installation type</b>	Inline (Alcove)	£0.00
	Corner	£0.00
<b>Optional - Upgrade to Privacy Glazing</b>	Frosted Glass	£40.00

## Description

---

EASA 1900mm full-height split-level shower door. Left-handed, manufactured to your dimension between a range of 600 and 1000mm. Please state the total door width required to a maximum of 1000mm.

The full-height split-level door is ideal for assisted showering in wet rooms, shower and bathrooms. The stylish design adds a touch of elegance and sophistication to the shower area.

The door is well-designed with 6mm thermally toughened safety glass, which is three times stronger than non-tempered glass.

The split-level shower door is designed with convenience in mind, manufactured from high-quality materials that are easy to clean and maintain.

EASA specialise in the design and manufacture of shower enclosures to suit those with disabilities, reduced mobility and multi-generational living.

The split-level door can be used on its own or configured with other EASA Elegance doors and fixed panels to create your own bespoke assisted easy access shower enclosure.

### Key benefits:

- Allows for carers to stay dry while assisting the client in the shower
- The glass is anti-limescale, for easier cleaning
- Adjustable wall profile
- Stainless steel magnetic locking handles
- Customisable total width (mm): 600-1000
- Provide barrier free access for those who require assistance showering
- 100% recyclable

### Components:

- 1x left-hand custom width full-height split-level door
- 6mm toughened safety glass
- Split-level interlocking ergonomic, magnetic door handle for trouble-free operation
- Seals and gaskets reduce the risk of water leakage and ensure a watertight seal
- Water deflectors on the bottom of the door help to further mitigate water leakage

- Stainless steel wall profile
- Wall profile has a 180-degree hinge for the doors

#### Technical details:

- Customisable total width (min. to max. mm): 600 to 1000
- Total split-level door height (mm): 1900
- Lower split-level door height (mm): 800
- Upper split-level door height (mm): 1100
- Wall compensator height (mm): 1920
- Wall compensator depth (mm): 55
- Wall compensator adjustment for off plumb walls of +15 to -24mm
- Please contact us if you require a custom height
- Optional - Frosted toughened glass for increased privacy

#### Compatibility:

- Can be retro-fitted onto a wet room floor or a shower tray with a 40mm flat perimeter
- Wall compensator for shower trays/tiled floors or coved vinyl sheet safety flooring

#### Accreditations:

- EU Construction Products Regulation (EU) No 305/2011 (CPR)
- BS EN 14428: 2015 + A1: 2018 Shower Enclosures/Doors
- BS EN 12150-1: 2015 + A1: 2019 Glass in building. Thermally toughened soda lime silicate safety glass
- BS EN 12600: 2002 Glass in building. Pendulum test. Impact test method and classification for their flat glass

#### Warranties:

- Accessories have a two-year warranty
- Lifetime warranty against manufacturing and material defects, excluding normal wear and tear in general domestic applications
- The rubber door seals are not covered by the warranty

#### Please note:

- This split level door is custom made and is **non-returnable**
- The minimum width (A) this split-level door can be manufactured to is : **600mm** and the maximum width is **1000mm**
- Ensure accurate dimensions are taken from tile face to tile face, or to the proposed closed position of the doors
- The free width of your "flat perimeter" of your wet room floor or a shower tray

## Additional Information

---

Manufacturer	Easa Group
Height (mm)	1900
Shape	Full HT Split Door (Left)
Tray Size (mm)	Custom Tray / Former Size
Handing	Left Hand
Front - ADJ Size (mm)	Custom Size 600 to 1000
Door Entry Width (mm)	Custom Width
For Installation On	Trays / Vinyl or Tiled Floors
Glass Thickness (mm)	6
Glazing	Clear - Toughened Safety Glass (TSG)
Finish	Chrome / Stainless Steel