



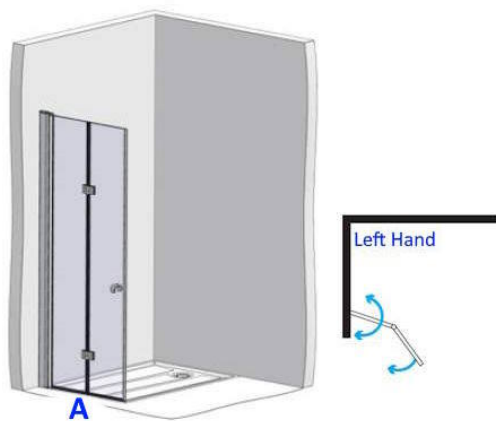
Independent 4 Life

EASA Elegance LH Full Height Bi-fold Door - Custom Size (A) Min. 700, Max. 1000mm

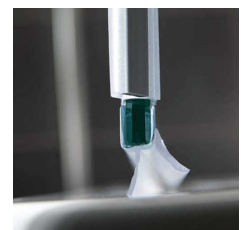
£1,059.60 Inc. VAT

Product Code: L5L

Product Images



Max. Width (A) : 1000mm







Additional Options

Overall width of (A) right-hand bi-fold door (min. 700, max. 1000mm)		£0.00
Wall profile compensator	Square - Shower Trays or Floor Tiles	£0.00
	Curved - Vinyl Safety Flooring	£0.00
Type of door handle	Door Knob	£0.00
	Large Easy Grip Handle	£80.00
Installation type	Inline (Alcove)	£0.00
	Corner	£0.00
Optional - Upgrade to Privacy Glazing	Frosted Glass	£40.00

Description

EASA 1900mm full-height bi-folding shower door. Left-handed manufactured to your dimensions between a range of 700 and 1000mm. Please state the total door width required to a maximum of 1000mm.

The stylish design adds a touch of elegance and sophistication to the shower area. The doors are well-designed with 6mm thermally toughened safety glass, which is three times stronger than non-tempered glass.

The full-height bi-folding door is designed with convenience in mind, with a standard door knob that can be

www.independent4life.co.uk | info@independent4life.co.uk | Tel: 0800 500 3001 | VAT No: 942447711

EORI GB942447711000

upgraded to a large easy grip ergonomic handle. Manufactured from high-quality materials that are easy to clean and maintain with a glass anti-limescale coating.

EASA specialise in the design and manufacture of shower enclosures to suit those with disabilities, reduced mobility and multi-generational living.

The bi-fold door can be used on its own or configured with other EASA Elegance doors and fixed panels to create your own bespoke assisted easy access shower enclosure.

Key benefits:

- The glass is anti-limescale, for easier cleaning
- Adjustable wall profile
- Stainless steel magnetic locking handles
- Customisable total width (mm): 700-1000
- Provide barrier free access for those who require assistance showering
- 100% recyclable

Components:

- 1x left-hand custom width full-height bi-fold door
- 6mm toughened safety glass
- 1x stainless-steel wall compensator, with chrome cover cap
- Includes a door knob with a satin anodised finish
- Upgrade to an ergonomic handle
- Seals and gaskets reduce the risk of water leakage and ensure a watertight seal
- Water deflectors on the bottom of the door help to further mitigate water leakage
- The wall profile has a 180-degree hinge for the 1st door panel
- Bi-fold rise and fall locking hinge system

Technical details:

- Stainless steel wall profiles
- Door height (mm): 1900
- Wall compensator height (mm): 1920
- Wall profile adjustment for off plumb walls of +15mm to -24mm
- Customizable total bi-fold door width (Min./Max. mm): 700 to 1000
- Please contact us if you require a custom height
- Optional - Frosted toughened glass for increased privacy

Accreditations:

- EU Construction Products Regulation (EU) No 305/2011 (CPR)
- BS EN 14428: 2015 + A1: 2018 Shower Enclosures/Doors
- BS EN 12150-1: 2015 + A1: 2019 Glass in building. Thermally toughened soda lime silicate safety glass
- BS EN 12600: 2002 Glass in building. Pendulum test. Impact test method and classification for their flat glass

Warranties:

- Accessories have a two-year warranty
- Lifetime warranty against manufacturing and material defects, excluding normal wear and tear in general domestic applications
- The rubber door seals are not covered by the warranty

Please note:

- This full height shower door is custom made and **non-returnable**

www.independent4life.co.uk | info@independent4life.co.uk | Tel: 0800 500 3001 | VAT No: 942447711

EORI GB942447711000

- The minimum width (A) the "bi-fold door" can be manufactured to is **700mm** and the maximum overall width is **1000mm**
- Please ensure accurate dimensions are taken from tile face to tile face or
- The free width of your "flat perimeter" of your wet room floor or a shower tray

Additional Information

Manufacturer	Easa Group
Height (mm)	1900
Shape	Bi-Fold Door (Left)
Tray Size (mm)	Custom Tray / Former Size
Handing	Left Hand
Front - ADJ Size (mm)	Custom Size 700 to 1000
Door Entry Width (mm)	Custom Width
For Installation On	Trays / Vinyl or Tiled Floors
Glass Thickness (mm)	6
Glazing	Clear - Toughened Safety Glass (TSG)
Finish	Chrome / Stainless Steel