



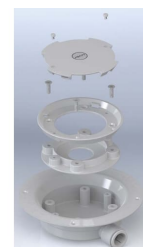
Independent 4 Life

# AKW P12 Pump Kit Link Option F w/ SilentFlow Plus

£618.00 Inc. VAT

Product Code: 05PP01F-L

## Product Images



## Additional Options

Product Code / Optional Cover

05PP16 / Control Box Cover

£14.52

## Description

---

The P12 shower waste water pump is the only quiet, unblockable and maintenance free shower waste pump.

This P12 pump is supplied with a Silentflow waste Pumped Shower Tray Waste and can be used with electric and mixer showers, No flow switch.

### Key benefits:

- Peristaltic pump design
- Near silent operation
- Safe 24v DC low energy motor, with low running costs
- Control box with built in test facility
- ABS Wall plate with quick release pump bracket, minimises installation time
- Supplied with a 2 metre length of 22mm flexible pipe for improved performance
- Wastewater is pumped through a sealed tube reducing the risk of blockages
- Self-priming
- Pumps up to 12 litres per minute
- Variable speed transformer for precise control
- Match the speed of pump to flow of water
- Maintenance free design
- Not handed for easy and quick installation
- Supplied with push fit pump housing cover
- Manufactured in the UK from parts that are 100% recyclable

### Includes AKW Silentflow+ PGTF 22mm Pumped Waste for Vinyl Flooring:

- Pumped waste gully
- For use with AKW Tuff Form floor formers and vinyl flooring
- 22mm outlet pipe
- 15mm outlet pipe adapter kit available separately product code: 25195
- 48mm depth below tray
- Integrated baffles reduce the noise escaping from the chambers within the waste
- Grate opens for easy cleaning and rodding
- Grate is secured to the waste with bayonet fixings or you can screw the grate down
- Quiet performance at all flow rates
- Compatible with all AKW Pumps

### Shower tray compatibility:

- Please refer to waste dimensions above for guidance
- For optimum performance of 12 litres per minute, Contour recommend the pump is installed no higher than 350mm from the top of the waste outlet to the underside of the wall plate
- The maximum length of the flexible pipe from the waste to the pump should be no more than 2m
- Can be retrofitted and is compatible with all wastes with a 22mm outlet
- If you want to use larger outlet pipework a suitable 22 - 40mm connector can be used
- The pump can be installed up to a maximum of 500mm but this will reduce the pump's overall performance

### Shower compatibility:

- No Flow Switch is supplied with this kit
- Link directly to a Redring Selectronic Premier WP, Mira Advance ATL Flex Extra or the Triton Safeguard+ eliminating the need for a flow switch

- When linking directly with a Mira Advance Flex Extra or Redring Selectronic Premier WP, Re-tighten the gland and connect the electric shower cables to the terminals marked flowswitch
- Wired directly to suitable shower
- If installing with a different shower - order alternative Pump Kit A with PW50 Waste (Product Code: 05PP01A-A)
- See installation instructions in the “Installation and Help Guides tab” for more information

**Optional Cover:**

- Control Box Cover (Product Code: 05PP16)

**Technical details:**

- Actual pump size (mm): 205 W x 270 H x 180 D
- Pump housing cover size (mm): 210 W x 330 H x 190 D
- 22mm Inlet/outlet
- Power Consumption 36 Watts intermittent rating
- 2.5 amp Fast blow fuse
- Power rating 24v DC
- IP65 Enclosure for bathrooms
- Pump complies to BS7671

**Warranty:**

- 7 year manufacturer warranty (based upon correct installation and appropriate application)

**Additional Information**

---

Manufacturer	AKW / Contour
Application	Vinyl Sheet Safety Flooring