



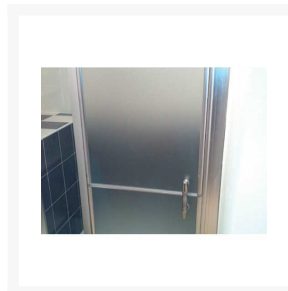
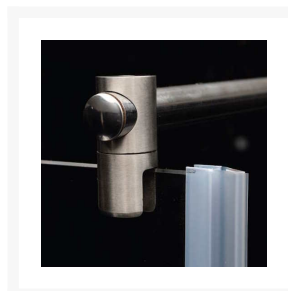
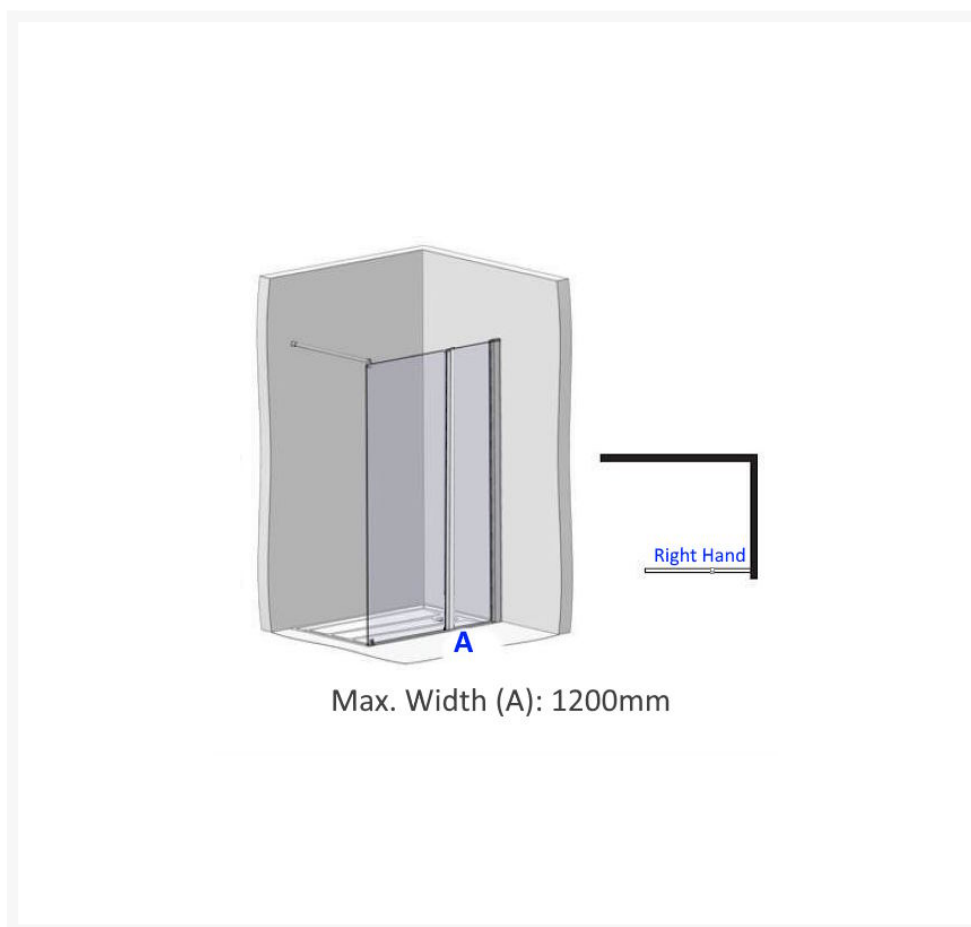
Independent 4 Life

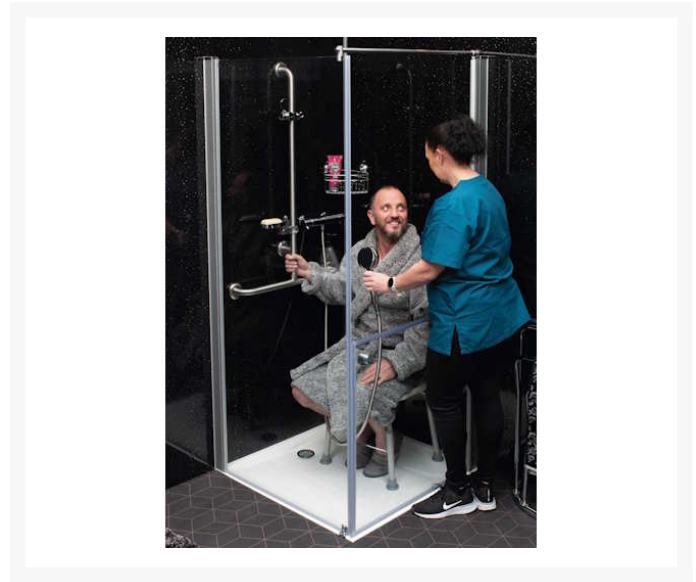
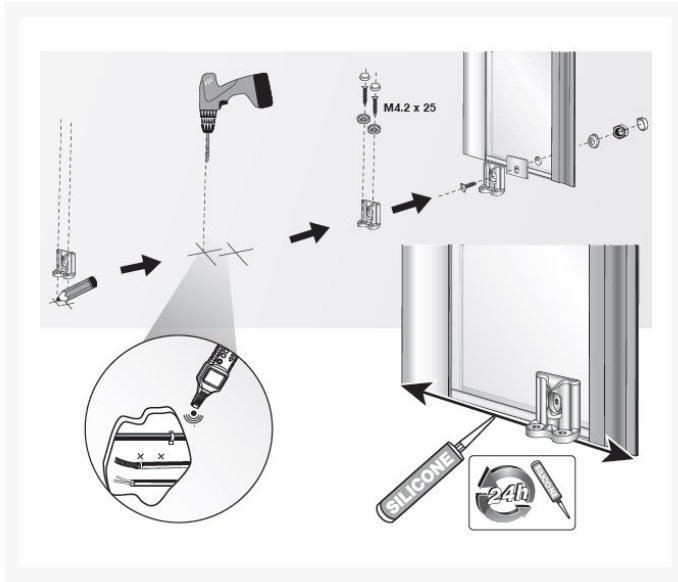
EASA Elegance RH Wide Full Height Fixed Panels - Custom Size (A) Min. 800, Max. 1200mm

£723.60 Inc. VAT

Product Code: L1R-WIDE

Product Images





Additional Options

Overall width of (A) both right hand fixed panels (min. 800, max. 1200mm)		£0.00
Width of first right fixed panel (400-1000mm max.)		£0.00
Wall profile compensator	Square - Shower Trays/Floor Tiles	£0.00
Installation type	Inline (Alcove)	£0.00
	Corner	£0.00
Optional - Upgrade to Privacy Glazing	Frosted Glass	£40.00

Description

This is the wide version of the L1R with two EASA 1900mm full-height fixed glass panels for a shower tray. Right-handed, manufactured to your dimensions between a range of 800 and 1200mm. Please state the width of each panel to equal your total required width to a maximum of 1200mm. Note: there will be a visible vertical glazing seal/bar between the two panels.

This shower screen panel offers the opportunity to install a wide glass screen where space is limited for the transportation and installation compared to a traditional full width screen.

The panels are well designed with 6mm thermally toughened safety glass, which is three times stronger than non-tempered glass.

Manufactured from high-quality materials that are easy to clean and maintain with anti-limescale glass.

EASA specialise in the design and manufacture of shower enclosures to suit those with disabilities, reduced

mobility and multi-generational living.

Key benefits:

- Anti-limescale glass for easier cleaning
- Adjustable wall profile, with a range of +15mm and -24mm
- Customisable total width (mm): 800–1200
- 100% recyclable

Components:

- 2x fixed right-hand custom width glass panels
- 1x stainless-steel 1000mm fixed panel lateral support bar (can be cut to length)
- 1x fixed panel mount, works in conjunction with the water seal at the base of the panel
- 1x stainless-steel wall compensator
- A satin finish bracket secures the fixed panel to a shower tray
- 6mm toughened/safety glass
- Seals and gaskets reduce the risk of water leakage and ensure a watertight seal

Technical details:

- Fixed glass panel heights (mm): 1900
- Wall compensator height (mm): 1920
- Wall compensator depth (mm): 55
- Wall compensator adjustment for off plumb walls of +15 to -24mm
- Customisable total width (min. to max. mm): 800 to 1200
- Please contact us if you require a custom height
- Optional — Frosted toughened safety glass for increased privacy

Compatibility:

- Can be retro-fitted onto a shower tray with a 40mm flat perimeter
- Wall compensator for shower trays

Accreditations:

- EU Construction Products Regulation (EU) No 305/2011 (CPR)
- BS EN 14428: 2015 + A1: 2018 Shower Enclosures/Doors
- BS EN 12150-1: 2015 + A1: 2019 Glass in building. Thermally toughened soda lime silicate safety glass
- BS EN 12600: 2002 Glass in building. Pendulum test. Impact test method and classification for their flat glass

Warranties:

- Accessories have a two-year warranty
- Lifetime warranty against manufacturing and material defects, excluding normal wear and tear in general domestic applications

Please note:

- These fixed panels are custom made and **non-returnable**
- These panels are supplied as two fixed panels and have a visible connecting strip between
- The minimum width each "panel" can be manufactured to is **400** and the maximum overall width of two panels is **1200mm**
- The free width of the "flat perimeter" of your shower tray

Additional Information

Manufacturer	Easa Group
Height (mm)	1900
Shape	Full HT Fixed Panel (Right)
Tray Size (mm)	Custom Shower Tray Size
Handing	Right Hand
Fixed Front Panel Width (mm)	Custom Size 800 to 1200
Door Entry Width (mm)	Custom Width
For Installation On	Shower Trays Only
Glass Thickness (mm)	6
Glazing	Clear - Toughened Safety Glass (TSG)
Finish	Chrome / Stainless Steel