



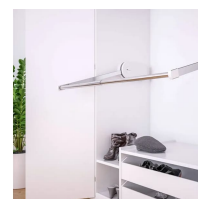
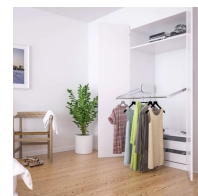
Independent 4 Life

Granberg BUTLER 720 Electric Wardrobe Lift – 600–900mm Width, Choice of Colours & Controls

£2,416.80 Inc. VAT

Product Code: 720-060

Product Images





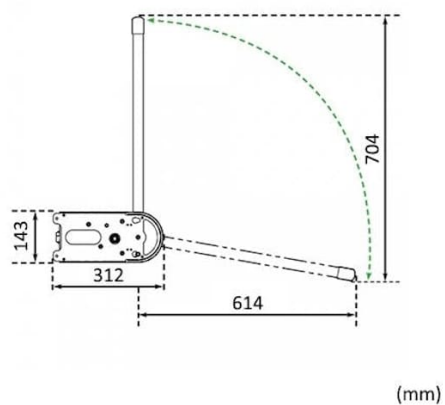
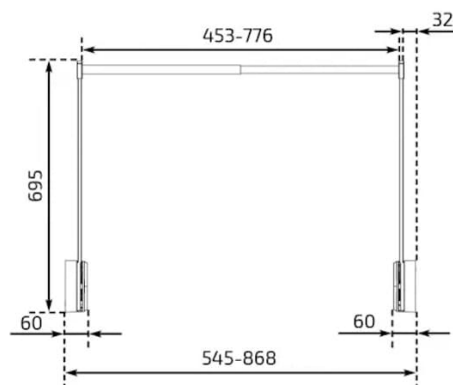
Grey, RAL 7035



White, RAL 9003



Black, RAL 9005





Product Options

Finishes - Covers / Arms	Price Inc. VAT
Grey, RAL 7035 - Covers / Chrome Arms	£2,416.80
White, RAL 9003 - Covers / Chrome Arms	£2,521.20
Black, RAL 9005 - Covers / Chrome Arms	£2,521.20

Additional Options

Product Code / Control options		
61251 / Recessed Corded Control Button, Alu-design, 5m Cable		£0.00
61253 / White Corded Hand Control		£33.00
61255 / Radio Remote Hand Control, 1x Lifting System		£33.00
61251+61355 / Wired Alu-design Control Button, Extension Frame		£42.00
61370 / Fixed Radio Control Button, ALU-design		£122.00
61370+61355 / Wireless ALU-design Control Button, Extension Frame		£164.00

Description

The BUTLER 720 is an electric wardrobe lift which lowers the clothes rail downwards in an arc to a seated

www.independent4life.co.uk | info@independent4life.co.uk | Tel: 0800 500 3001 | VAT No: 942447711

EORI GB942447711000

user.

Stylish and discreet, the lift features quiet motors with hard wearing metal gears, ensuring a smooth and secure lifting operation. It also has a built-in safety stop feature, which prevents the lift's downward movement in the event of an obstruction.

Suitable for wardrobe widths of 600-900mm, the BUTLER 720 is available with either Grey, White or Black coloured motor covers and a choice of controls.

Key benefits:

- Electric wardrobe lift
- Mechanically lowers the clothes rail down to a comfortable height for a seated user
- Stylish and discreet design
- Quiet motors with hard wearing metal gears
- Integrated safety stop - stops movement on collision
- Suitable for wardrobe widths of 600-900mm
- For internal wardrobe dimensions of 545-868mm in width
- Telescopic rail dimensions 453-776mm in width

Includes:

- 1x Wardrobe lift
- 1x Control unit with 2x connection motor cables
- 1x Power supply unit with UK plug, 2m length of motor cable

Choice of controls:

- Corded hand control
- Wired fixed ALU-design control button for recessing with 5m cable - requires 25mm clear depth for installation
- Wired fixed ALU-design control button with Extension frame for surface mounting with 5m cable - protrudes 52mm
- Wireless ALU-design control button for recessing with 5m cable - requires 25mm clear depth for installation
- Wireless ALU-design control button with Extension frame for surface mounting - protrudes 52mm
- Remote control for 1x BUTLER lifting system
- If you are fitting more than one BUTLER, multi-channel remotes for up to 5 lifts are also available (see Product Code: 6125x)
- Note: The Control box of the BUTLER will be supplied with the remote receiver, factory fitted for the Remote or Wireless options
- **Choice of motor cover trim colours:**
 - Cover of grey plastic RAL 7035, chromed steel arms and telescopic clothes rail
 - Cover of white plastic RAL 9003, chromed steel arms and telescopic clothes rail
 - Cover of black plastic RAL 9005, chromed steel arms and telescopic clothes rail

Technical details:

- Height adjustment: Arc motion, steplessly adjustable 704mm downwards, 614mm outwards
- Speed (mm / sec): 47
- Electrical connection: Plug for 100-240VAC, 50/60hz, 2.0 A
- Lifting force (kg): 30
- Noise level (dB): 52
- Materials: Powder-lacquered steel parts, plastic cover, chromed clothes rod
- Delivered weight (kg): 12.5

Warranty:

- 3 year manufacturer warranty
- This product comes with a 3 year warranty against manufacturing defects

Additional Information

Manufacturer	Granberg
Compatible Model	BUTLER 720
Min. / Max. Load (kg)	0 / 30
For Wardrobe Width (mm)	600-900
Operation	Electric