



Independent 4 Life

Ropox FlexiElectric Flexible Safety Stop Strip - 1600mm

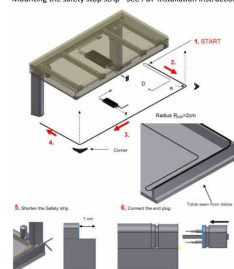
£283.20 Inc. VAT

Product Code: 30-69160

Product Images



Mounting the safety stop strip - See PDF Installation Instructions



Sectional view of wooden front fascia / side fascia:

It is extremely important to mount safety strip in straight line with edge of front fascia / side fascia.



Description

Ropox flexible safety stop strip, 1600mm in length, should be used to ensure safe operation of the FlexiElectric height adjustable rise and fall worktop frames and 4Single electric table frames.

- The Safety Stop strip, should be fitted, so that the user or other obstructions do not get crushed, when lowering the Ropox worktop frame
- Must be used with FlexiElectric worktops and 4Single electric tables to ensure safe operation
- Requires a fascia front to be mounted to the front and sides of the worktop frame
- Mount the safety stop strip in a straight line along the underside of the front edge of the fascia
- 1600mm length
- Supplied with a 1000mm Control Cable
- The Control Cable plugs into the Ropox Control Box
- Download the PDF Installation Instructions for more information

Please note: Do not cut off any excess length, this should be fixed below the worktop.

Warranty:

- 1 year manufacturer warranty

Additional Information

Manufacturer	Ropox
Compatible Model	FlexiElectric