



Independent 4 Life

# Ropox FlexiElectric Flexible Safety Stop Strip - 3200mm

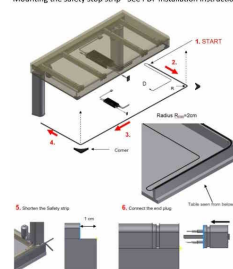
£353.39 Inc. VAT

Product Code: 30-69320

## Product Images



Mounting the safety stop strip - See PDF Installation Instructions



Sectional view of wooden front fascia / side fascia:

It is extremely important to mount safety strip in straight line with edge of front fascia / side fascia.



# Description

---

Ropox flexible safety stop strip, 3200mm in length, to be used to ensure safe operation of the FlexiElectric height adjustable rise and fall worktop frames and 4Single electric table frames.

- The Safety Stop strip, should be fitted, so that the user or other obstructions do not get crushed, when lowering the Ropox worktop frame
- Must be used with FlexiElectric worktops and 4Single electric tables to ensure safe operation
- Requires a fascia front to be mounted to the front and sides of the worktop frame
- Mount the safety stop strip in a straight line along the underside of the front edge of the fascia
- 3200mm length
- Supplied with a 1500mm Control Cable
- The Control Cable plugs into the Ropox Control Box
- Download the PDF Installation Instructions for more information

**Please note:** Do not cut off any excess length, this should be fixed below the worktop.

**Warranty:**

- 1 year manufacturer warranty

# Additional Information

---

Manufacturer	Ropox
Compatible Model	FlexiElectric