



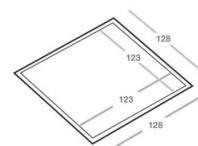
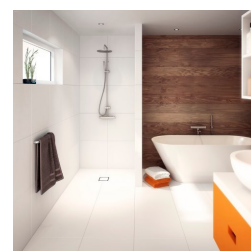
Independent 4 Life

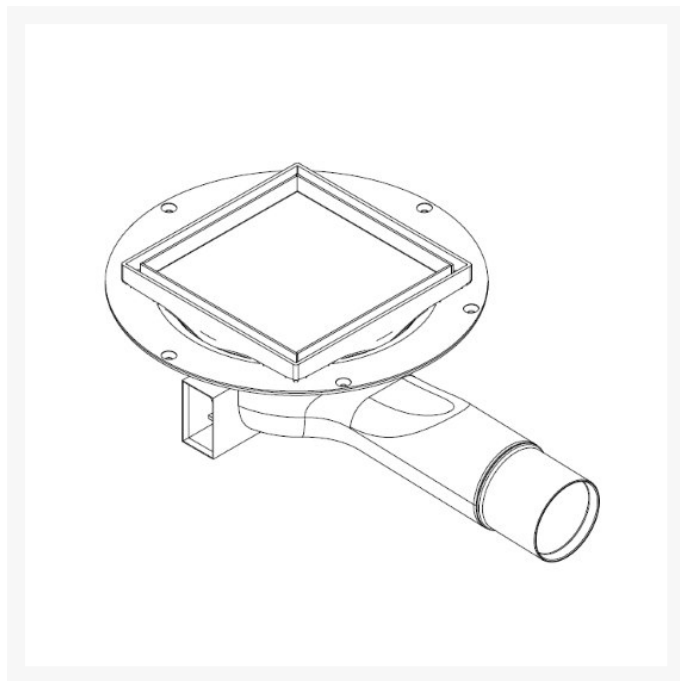
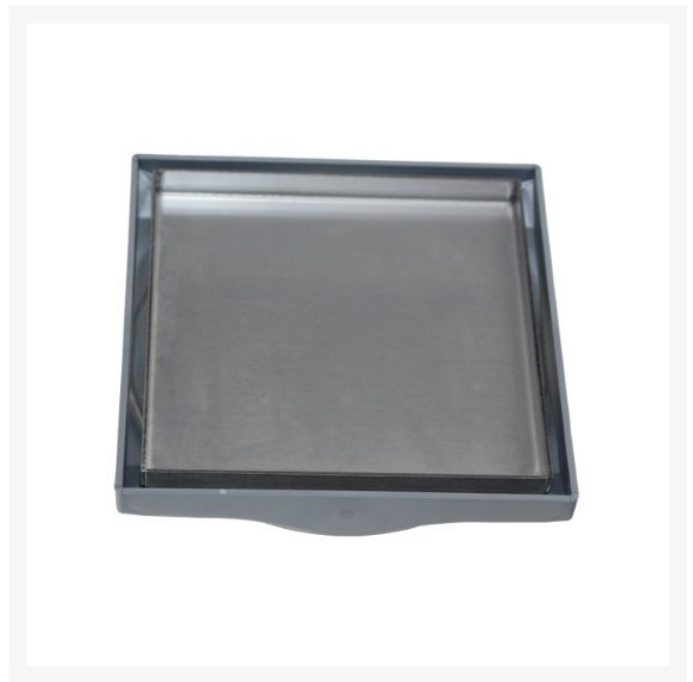
Purus Tile Adapter, SS Tile Insert - 130x130mm

£57.50 Inc. VAT

Product Code: 52728

Product Images





Description

Purus stainless steel frame with recess for you to insert your own tile to match your surrounding floor area, therefore creating an almost seamless wet floor area.

Compatible with all Purus 130mm diameter wastes - "Mini", Max, Oden Brage wastes and fits into the gully clamping ring.

Tiling the floor is easy once installed as you can tile off the edge of the tile frame.

The tile inset stainless steel "housing" is removable for access and maintenance of the gully below.

Technical details:

- Dimensions: 128 x 128mm
- Height: 12mm (external); 10mm (internal)
- Material: Plastic (adapter) and Stainless steel (Tile insert)
- Load Class K3 (300kg)
- 10mm Overall depth of stainless steel housing - Allow for tile thickness plus adhesive
- The frame can be rotated to the desired location of the tiles

Compatible with:

- Purus Minimax 50 with Horizontal Outlet (Product Code: 7113764UK)
- Purus Minimax 2-Part Wet Floor Gulley, HORIZ Outlet (Product Code: 52719)
- Purus Mini Brage 110 Vertical Outlet (Product Code: 7113538UK-F)
- Purus Mini Brage 50 Vertical Waste Outlet (Product Code: 7113539UK)
- Purus Mini Oden 50 Horizontal Outlet (Product Code: 7113535UK)

Additional Information

Manufacturer	Purus
Floor Finish	Tiled Flooring
Grate Material / Finish	Custom / Insert Your Tile