



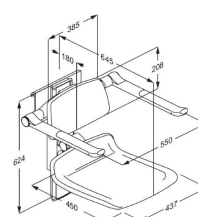
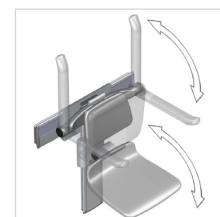
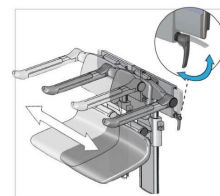
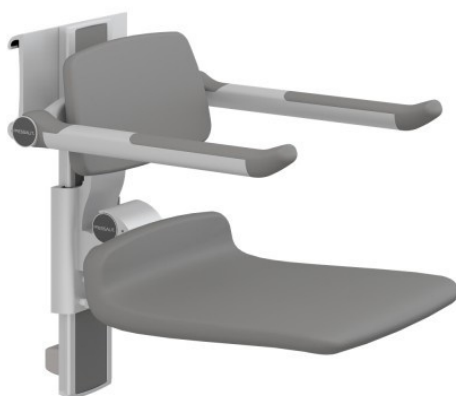
Independent 4 Life

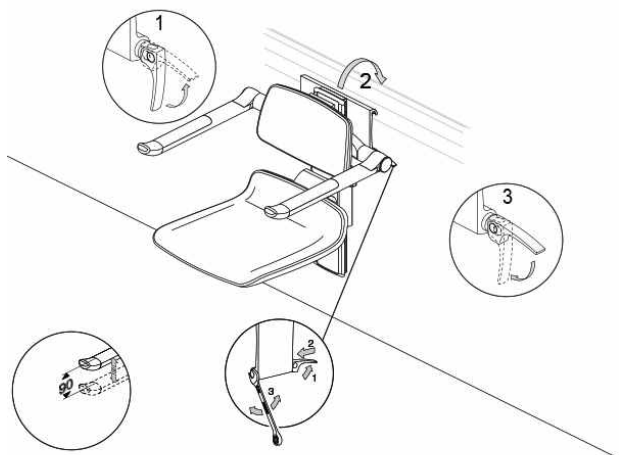
Pressalit PLUS Shower Seat 450, Manually Height & Sideways ADJ - Colour Choice

£2,592.90 Inc. VAT

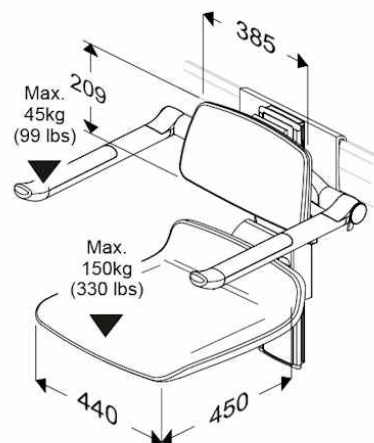
Product Code: R7464xxx

Product Images

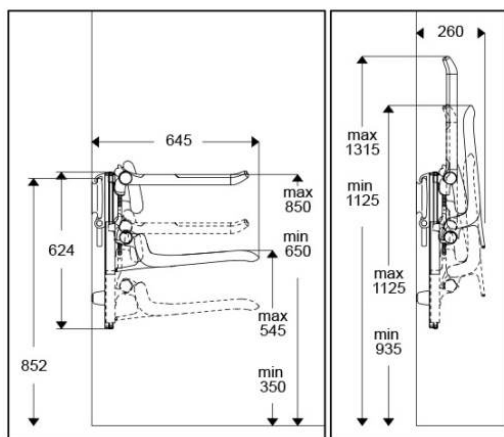




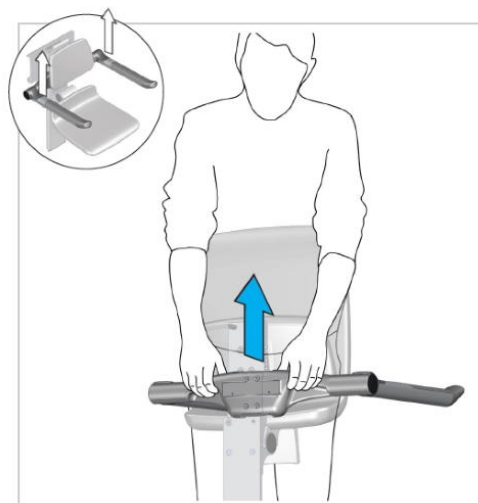
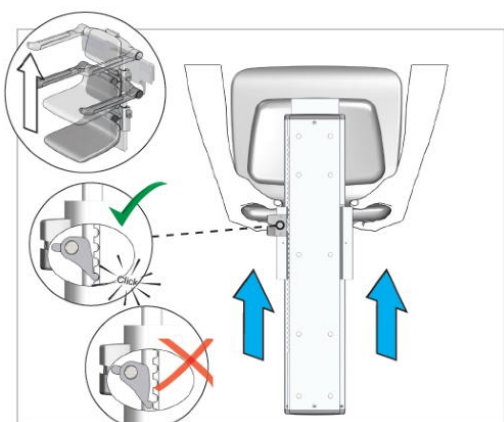
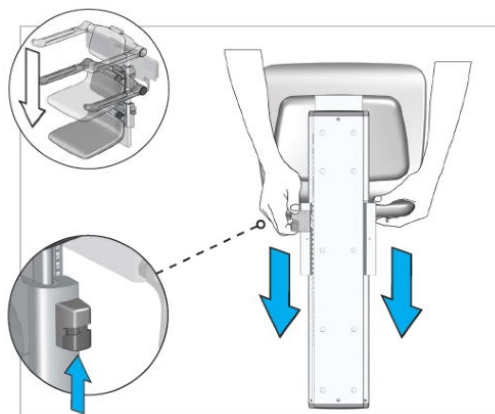
(mm)

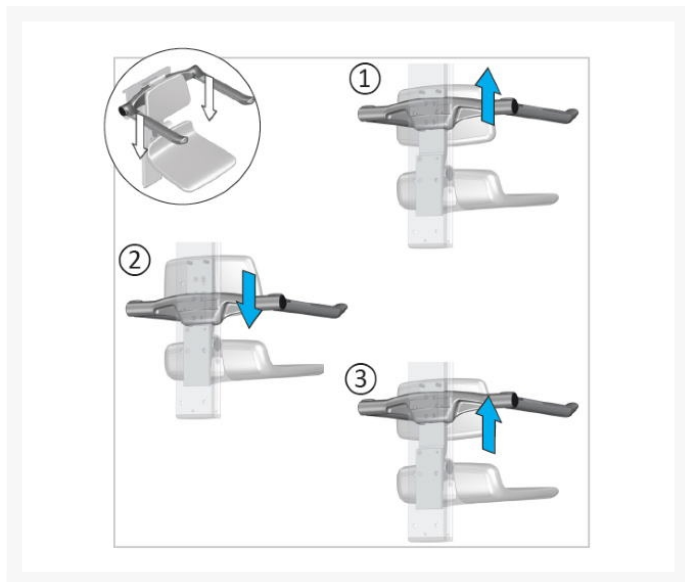


(mm)



(mm)





Product Options

Colour	Price Inc. VAT
Pressalit Anthracite 112	£2,592.90
Pressalit Dark Blue 108	£2,852.40
Pressalit Lime Green 277	£2,852.40
Pressalit Red 035	£2,852.40
Pressalit White 000	£2,592.90

Description

Pressalit PLUS 450 shower seat, manually height adjustable by 195mm and sideways adjustable with foldable seat and armrests. For mounting on the horizontal PLUS wall track (not included).

The seat, backrest and armrests can be adjusted simultaneously thanks to a safe and easy click system. The armrests can be adjusted independently of the seat and backrest.

It can also be easily moved when a standing user needs to take a shower, as the seat and armrests can fold up when not in use or to maximise floor space.

With the horizontal wall track mounted at the recommended height, it is possible to adjust the height of the shower seat by 195mm from 350 - 550mm above floor level.

Key benefits:

- Suitable for adults
- Manually height adjustable by 195mm

- Anthracite cover plate for vertical wall track
- The backrest and armrests are independently height adjustable
- Maximum flexibility for multi-user shower rooms
- Movable and detachable without the use of tools
- For mounting on the Pressalit PLUS horizontal wall track (not included), for manual sideways movement
- The seat and armrests are foldable
- Ergonomically designed seat
- The seat has a soft and slip-resistant material that has a warm feel
- The armrests oval shape gives an easy and comfortable surface to lean on and push against
- Available in a range of colours

Technical details:

- Seat contact surface area depth x width (mm): 450 x 437
- Manual adjustment height (mm): 195
- Seat projection from the wall (mm): 645
- Seat height off the floor min./ max. (mm): 350 / 550
- Support arms height off the floor min./ max. (mm): 650 / 850
- Folded projection from the wall (mm): 260
- Max. load of seat: 200kg
- Max. load of armrests: 55kg
- Product weight (kg): 19.28

Materials:

- **Seat and backrest:** Comfortable polyurethane (PU) foam over a plywood core, seat fitted to an aluminium profile
- Covered with an in-mould coated surface protected using a clear PU lacquer
- Internal components and fasteners are primarily made of stainless steel
- The hinge barrel is capped with ABS
- **Arms:** Primarily made of 10-micrometre anodized aluminium
- Constructed of 10-micrometre anodised aluminium, with a non-slip gripping surface at the end made of soft SEBS and incorporating a glass-reinforced nylon core
- **Vertical track:** Primarily made of 10-micrometre anodized aluminium
- The anthracite cover plate is made of polystyrene
- Track ends are capped with ABS polymer

Declaration of conformity:

- This product is in compliance with all relevant requirements of regulation (EU) 2017/745 on medical devices

Warranty:

- 5-year manufacturer warranty

Manufacturer product codes:

- R7464000, R7464112, R7464035, R7464108, R7464277

Former manufacturer codes:

- The Pressalit PLUS range has superseded several former Pressalit products
- This item has replaced: R7450, R7566
- Please check for any changes to the product specification
- Please also note that items in the PLUS range cannot be mounted onto older Pressalit wall tracks, and

www.independent4life.co.uk | info@independent4life.co.uk | Tel: 0800 500 3001 | VAT No: 942447711

EORI GB942447711000

vice versa

Additional Information

Manufacturer	Pressalit
Operation	Manual Folding
Configuration	Seat, Arms & Backrest
Seat Width (mm)	400 - 499
Height Adjustment (mm)	195
Folding Seat	Yes
Padded	Yes