



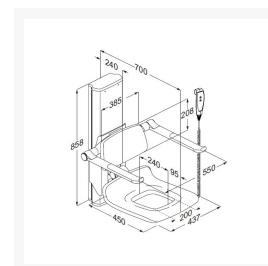
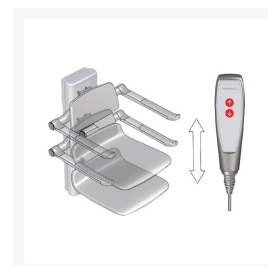
Independent 4 Life

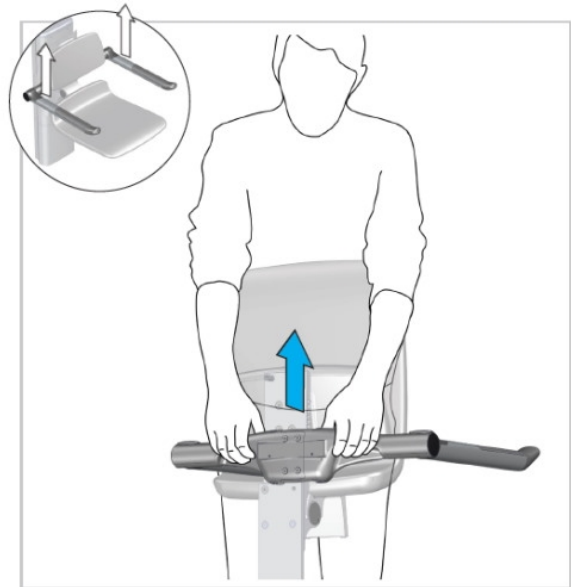
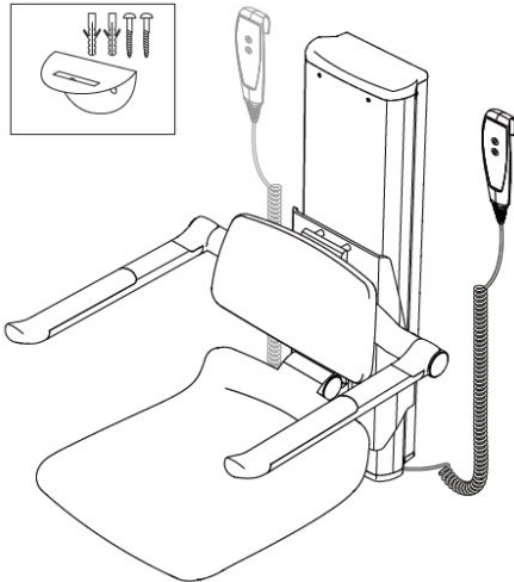
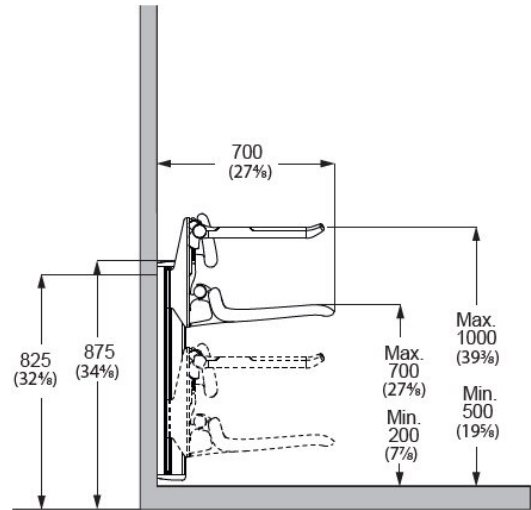
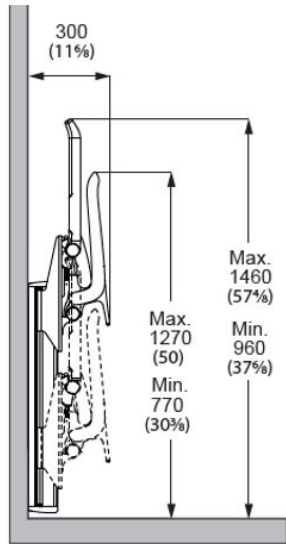
Pressalit PLUS Aperture Shower Seat 450, Electrically Height ADJ, Wired Hand Control - Colour Choice

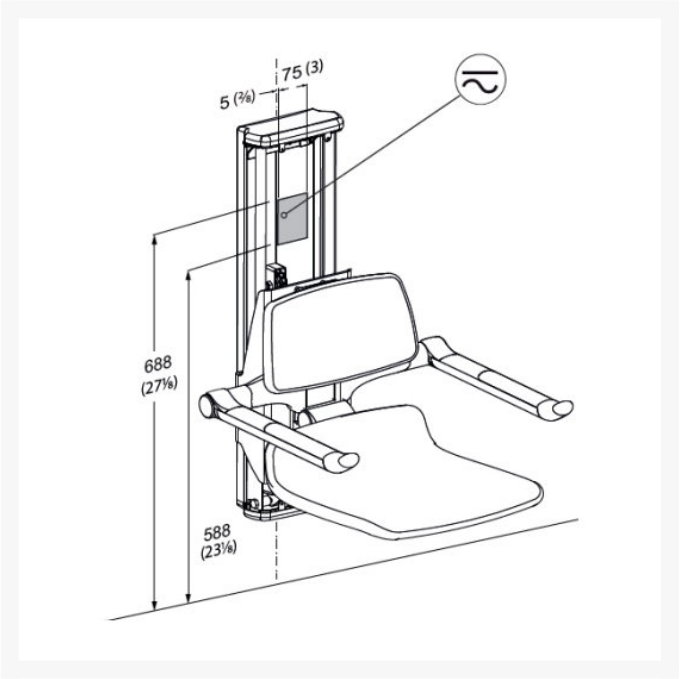
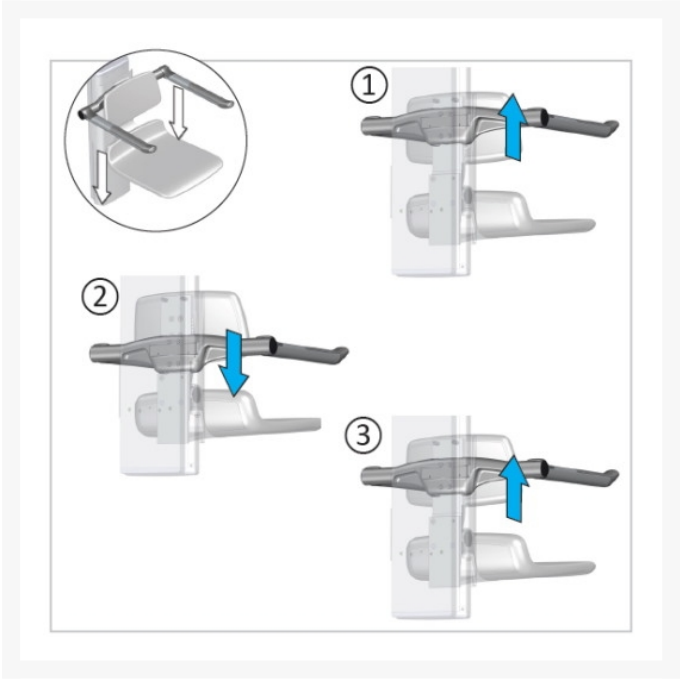
£4,254.30 Inc. VAT

Product Code: R7635xxx

Product Images







Product Options

Colour	Price Inc. VAT
Pressalit Anthracite 112	£4,254.30
Pressalit White 000	£4,360.80

Description

Pressalit PLUS 450 aperture shower seat has a wired hand controller to adjust the seat height between 200 and 700mm, with a folding aperture shower seat, backrest and height adjustable armrests.

The aperture seat can be configured and adjusted to meet the requirements of the individual user or situation.

The aperture seat, backrest and armrests can be adjusted simultaneously thanks to a safe and easy click system. The armrests can also be adjusted independently of the seat and backrest.

It can also be folded when a standing user needs to take a shower, as it folds away to free up extra space when not in use.

Key benefits:

- Electrically height adjustable aperture shower seat by 500mm
- The armrests are independently height adjustable
- Maximum flexibility for multi-user shower rooms
- The aperture seat and armrests are foldable
- Ergonomically designed seat, with aperture
- The seat has a soft and slip-resistant material that has a warm feel
- The armrests oval shape gives an easy and comfortable surface to lean on and push against
- The wired hand control is supplied with a bracket for fitting to the wall
- Available in a choice of Anthracite or White

Technical details:

- Aperture seat has a contact surface area of 450 x 437mm
- Adjustment height (mm): 500
- Projection from the wall (mm): 700
- Aperture seat height off the floor min./ max. (mm): 200 / 700
- Support arms height off the floor min./ max. (mm): 500 / 1000
- Folded projection from the wall (mm): 300
- Speed, upwards (mm/s): 5
- Speed, downwards (mm/s): 5
- Noise level (dB): 48
- Max. load aperture seat: 150kg
- Max. load armrest: 45kg
- Product weight (kg): 30.26

Electrical technical details:

- Please refer to the PDF download for the installation instructions
- Mains connection (V): 230
- Mains cable length to Transformer (mm): 3000
- Transformer to Actuator (V): 24
- Cable length from Transformer to Actuator (mm): 9500
- Electrical (Hz): 50-60
- Electrical rating (IP): IPX6 (Water projected in powerful jets, from a nozzle size up to 12.5 mm - against the product from any direction shall have no harmful effects)
- Power consumption, under maximum load (W): 60
- Power consumption, on standby (W): 0.5
- Actuator (motor) - LA40 (Linak) 6000N, IPX6

- Control box - SMPS14 (Linak) IPX6
- Wired remote control - HB3 (Linak) IP66
- Upon installation the 2 pin plug must be removed and hard wired to a fused spur, as per electrical regulations

Materials:

- **Seat and backrest:** Comfortable polyurethane (PU) foam over a plywood core, seat fitted to an aluminium profile
- Covered with an in-mould coated surface protected using a clear PU lacquer
- Internal components and fasteners are primarily made of stainless steel
- The hinge barrel is capped with ABS
- **Arms:** Primarily made of 10-micrometre anodized aluminium
- Constructed of 10-micrometre anodised aluminium, with a non-slip gripping surface at the end made of soft SEBS and incorporating a glass-reinforced nylon core
- **Vertical track:** Primarily made of 10-micrometre anodized aluminium
- Track ends are capped with ABS polymer

Declaration of conformity:

- This product is in compliance with all relevant requirements of regulation (EU) 2017/745 on medical devices
- It also complies with all relevant requirements in the Council Directive 2006/42/EC (of 17 May 2006) on machinery and the Council Directive 2011/65/EC on RoHS

Warranty:

- 5 year manufacturer warranty

Manufacturer product codes:

- R7635000, R7635112, R7635035, R7635108, R7635277

Former manufacturer codes:

- The Pressalit PLUS range has superseded several former Pressalit products
- This item has replaced: R7471, R7258
- Please check for any changes to the product specification

Additional Information

Manufacturer	Pressalit
Operation	Electric
Configuration	Aperture Seat, Arms & Backrest
Seat Width (mm)	400 - 499
Height Adjustment (mm)	500
Folding Seat	Yes
Padded	Yes