



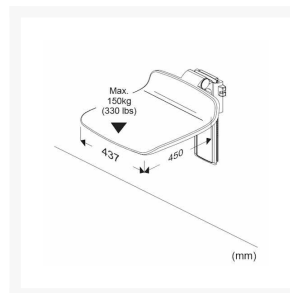
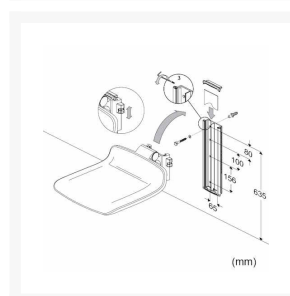
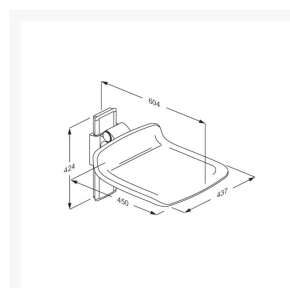
Independent 4 Life

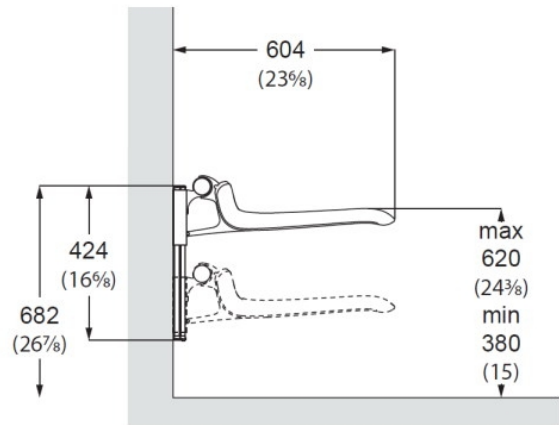
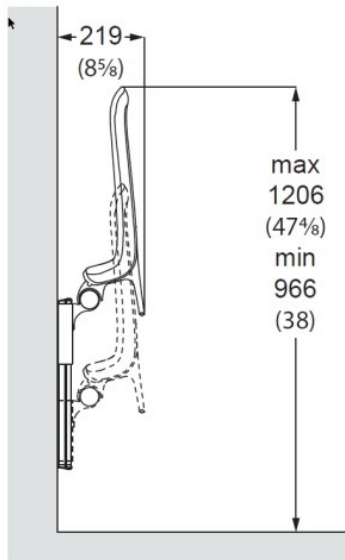
Pressalit PLUS Shower Seat 450, Manually Height ADJ - Colour Choice

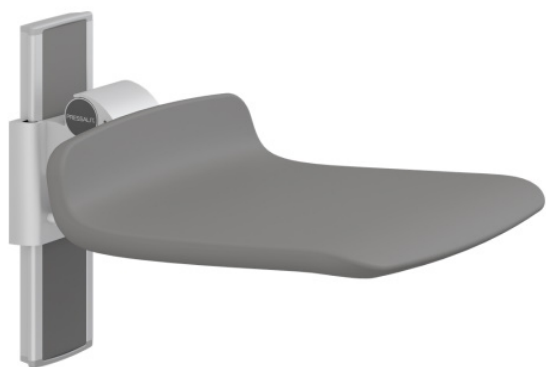
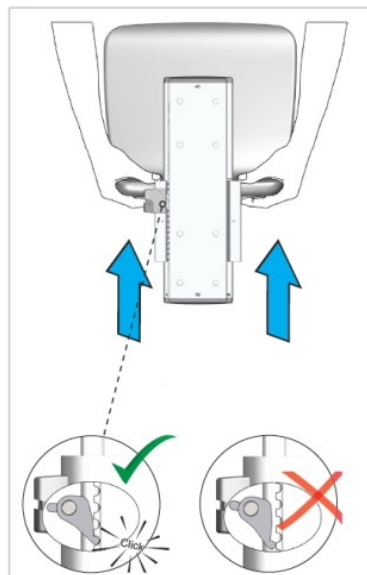
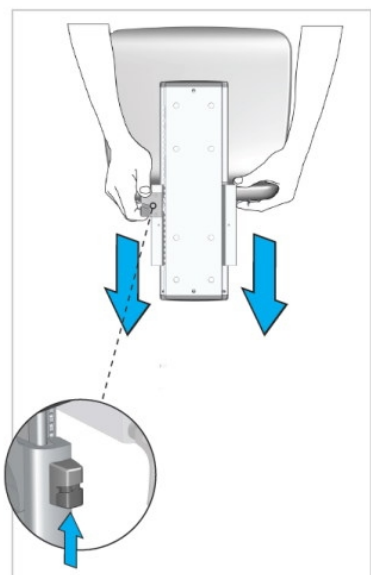
£1,439.10 Inc. VAT

Product Code: R7414xxx

Product Images







Product Options

Colour	Price Inc. VAT
Pressalit Anthracite 112	£1,439.10
Pressalit Dark Blue 108	£1,583.70
Pressalit Lime Green 277	£1,583.70
Pressalit Red 035	£1,583.70
Pressalit White 000	£1,439.10

Description

Pressalit Care PLUS height adjustable folding 450 adult shower seat on the PLUS vertical track with anthracite grey cover plate.

Beautifully designed and made from soft, non-slip materials, the shower seat exudes high quality and sitting comfort.

It can also be easily moved when a standing user needs to take a shower, as it folds away to free up extra space when not in use.

With the vertical wall track mounted at the recommended height, the height of the shower seat can be adjusted 240mm from 380 - 620mm above floor level.

Key benefits:

- Suitable for adults
- Can be set at the optimum height to suit the size and needs of user
- 240mm manually height adjustable
- Moveable and detachable without the use of tools
- Space efficient
- Foldable seat
- Ergonomically designed seat
- The seat has a soft and slip-resistant material that has a warm feel
- Aluminium PLUS vertical track with an Anthracite cover plate
- Available in a range of colours

Technical details:

- Fixed mounting, folding seat
- Seat contact surface area depth x width (mm): 450 x 437
- Projection from the wall (mm): 604
- Folded projection from the wall (mm): 219
- Max. seat load (kg): 200
- Product weight (kg): 10.45

Materials:

- **Seat:** Comfortable polyurethane (PU) foam over a plywood core, fitted to an aluminium profile

- Covered with an in-mould coated surface protected using a clear PU lacquer
- Internal components and fasteners are primarily made of stainless steel
- The hinge barrel is capped with ABS
- **PLUS track:** Primarily made of 10-micrometre anodized aluminium
- The anthracite cover plate is made of polystyrene
- Track ends are capped with ABS polymer

Declaration of conformity:

- This product is in compliance with all relevant requirements of regulation (EU) 2017/745 on medical devices

Warranty:

- 5-year manufacturer warranty

Manufacturer product codes:

- R7414000, R7414112, R7414035, R7414108, R7414277

Former manufacturer codes:

- The Pressalit Care PLUS range has superseded several former Pressalit Care products
- This item has replaced: R7410, R7410xxx, R7410112xxx, R7410182xxx
- Please check for any changes to the product specification
- Please also note that items in the PLUS range cannot be mounted onto older Pressalit Care wall tracks, and vice versa

Additional Information

Manufacturer	Pressalit
Operation	Manual Folding
Configuration	Seat Only
Seat Width (mm)	400 - 499
Height Adjustment (mm)	240
Folding Seat	Yes
Padded	Yes