



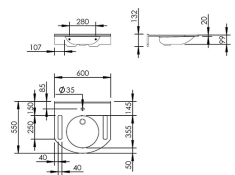
Independent 4 Life

Granberg 425-015 Solid Surface Wash Basin, Tap Hole, No Overflow, 600x550mm

£1,069.20 Inc. VAT

Product Code: 425-015

Product Images





Description

The Granberg 425-015 is a rounded wheelchair accessible washbasin with shallow bowl and integrated side gripping slots.

Crafted from high-quality solid surface material the basin shows no visible joins, it is lightweight, strong and easy to clean.

The basin features integral grip handles, which could also be used to hang towels.

Key benefits:

- Elegant curved washbasin
- Manufactured by Geberit
- Resin-based solid surface material - lighter, easier to clean, no visible joins
- Wheelchair accessible rounded washbasin with shallow depth
- Integrated handles can serve as grab rails or towel holder
- Ideal for mounting onto a height adjustable lift to create a rise and fall installation for multiple users
- Includes strainer waste

Technical details:

- Width (mm): 600
- Front-to-back depth (mm): 550
- Front height of basin (mm): 99
- Rear height of basin (mm): 132
- Leg room beneath the basin (mm): 550mm
- Centre-to-centre of bolt fixings (mm): 280
- Weight (kg): 11.04
- Max load basin (kg): 150
- Materials: Solid surface
- NO overflow, supplied with bottom drain and strainer waste

Warranty:

- 2 year manufacturer warranty

Additional Information

Manufacturer	Granberg
Range / Model - Type	BASICLINE / 401 - Man., BASICLINE / 403 - Man., BASICLINE / 406 - Gas, BASICLINE / 415 - Elec., BASICLINE / 433 - Elec., DESIGNLINE / 417 - Elec.
Compatible Height Adj. Bracket	Granberg BASICLINE 401, Granberg BASICLINE 403, Granberg BASICLINE 406, Granberg BASICLINE 415, Granberg DESIGNLINE 417, Granberg BASICLINE 433
For Wash Basin Range	BASICLINE 425-015
Width (mm)	600
Front-to-back depth (mm)	550
Overall height (mm)	132
Overflow	No
Integrated Grabrails	Yes