



Independent 4 Life

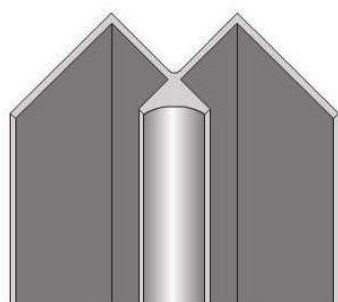
Showerwall Internal Corner Trim - 2450mm Length - Bright Silver Finish

£46.42 Inc. VAT

Product Code: SHWL-020

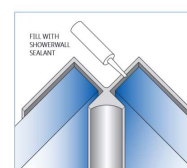
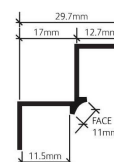
Product Images

Internal Corner

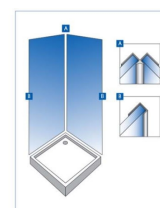


Bright Silver

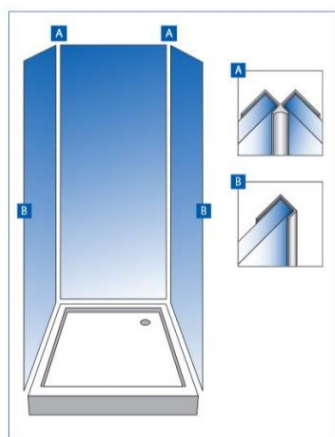
Internal Corner



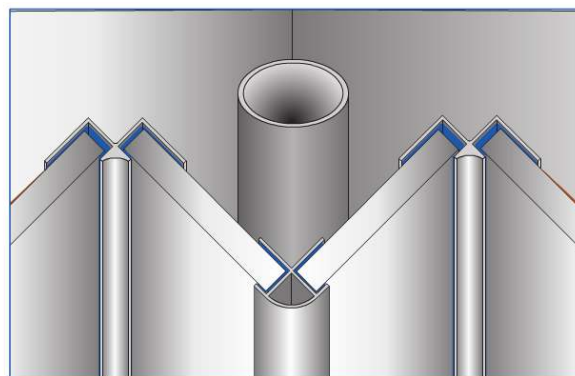
Internal corner trim
2450mm. Used on all internal 90° corners.
Seal with Showerwall sealant.



2-sided shower system



3-sided shower system



Ensure all trims are fixed with Showerwall adhesive and the trim recess' are filled with Showerwall sealant prior to installing the panel sections.

Description

The Internal Corner aluminium extrusion with Bright Silver finish for use with the Showerwall range of decorative waterproof panels for shower and bathroom applications.

Use for creating a waterproof 90°C internal corner, requires Showerwall Sealant (order separately).

Examples of application:

- 1 x Internal Corner – For joining 2 panels at a corner to create a 2 sided corner shower system
- 2 x Internal Corners – For joining 3 panels at a corner to create a 3 sided alcove shower system

Technical information:

- 1 x 2450mm length
- Bright Silver finish
- A Mitre box should be used to cut trims
- Once installed – 11mm wide exposed face visible
- Showerwall panels should be installed with Showerwall Sealant – White or Clear (order separately) as per Showerwall Installation instructions.
- Trims protect sharp edges of Showerwall panels and provide a smart decorative finish

Also available in 4 other finishes:

- Antique Gold (Product Code: SHWL-018)
- Black Silk (Product Code: SHWL-019)
- Satin Silver (Product Code: SHWL-021)
- White Gloss (Product Code: SHWL-022)

Shipping:

- Please note: All Showerwall products trims and panels are subject to a shipping charge, dependant on Postcode which will be calculated at Checkout

Additional Information

Manufacturer	Showerwall
Component	Aluminium Internal Corner
Trim Colour	Bright Silver